



2022 PRODUCT
BROCHURE



Albutt is a wholly owned family business specialising in manufacturing high specification attachments for the agricultural, waste, construction and forestry industries.

Founded over 50 years ago by Robert Albutt, the company's roots are in farming with 4 generations of the Albutt family involved in agriculture. Now employing over 50 members of staff and operating from two manufacturing facilities, Albutt Attachments have grown to become the leading name in the worldwide attachment market with products being shipped across the globe on a weekly basis.

The company's ethos is to build up to a quality rather than down to a price, resulting in the Albutt brand becoming the 'heavy duty' option in this specialised industry. This is reflected in the high percentage usage of high tensile steels 'Hardox' & 'Domex' within the Albutt product range.

To maintain service levels of it's market leading product, Albutt operates a continual investment policy which over the last year has seen a second factory open and a brand new paint and surface preparation facility installed. The policy allows Albutt to keep pace with an ever changing market place and continue to produce class leading products to a number of industries and applications.

The Albutt Sales Team has a combined experience of over 100 years within the attachment market, backed by second to none design, production, administration and logistic departments, you can rest assured that Albutt is the right choice for your attachment requirements.

Connections to Agriculture



WHY CHOOSE ALBUTT

- Recognised global leading manufacturer of Agricultural and Waste attachments
- Two manufacturing plants; Tewkesbury and Evesham – 50,000 sq ft
- Modern production machinery and facilities with continual investment policy
- Accredited manufacturer for genuine Hardox and Strenx
- Supplier to some of the industry's leading OEM's
- Modern delivery truck fleet
- Dedicated Sales team with parts and aftersales back up
- Design team working with latest Solidworks software
- Renowned for being market leader for strength and design
- Worldwide Dealership network, from Australia and New Zealand to USA and South America
- Over 50 years' experience in the attachment industry
- New paint and surface preparation facility installed in 2016
- Sales, Design, Purchasing, Admin, Logistic, and Production teams – over 50 employees
- Boardroom and meeting facilities
- Overhead crane system with jig and rotator machines
- Over 1200 approved dealers and distributors



ALBUTT CONTACTS



Alistair Albutt
Managing Director

T: 01242 622 903
M: 07860 667 585
E: alistair@albutt.co.uk



Tom Worthington
General Manager

T: 01242 621 990
M: 07816 098 516
E: tom@albutt.co.uk



Dan Cross
Sales Manager

T: 01242 621 993
M: 07720 087 264
E: dan@albutt.co.uk



Keith Hodges
Parts Sales

T: 01242 622 901
E: keith@albutt.co.uk



Sharron Kinsey
Office Administrator

T: 01242 622 900
E: sharron@albutt.co.uk



Mark Holder
Technical Manager

T: 01242 622 908
E: mark@albutt.co.uk



David Guy
Design Engineer

T: 01242 622 992
E: david.guy@albutt.co.uk



Sam Herring
Design Engineer

T: 01242 620 252
E: sam.herring@albutt.co.uk



Stuart Freer
Production Manager

T: 01242 621 999
E: stuart.freer@albutt.co.uk



Lewis Ridley
Buyer

T: 01242 622 906
E: lewis.ridley@albutt.co.uk

CONTENTS

[illegible]

When ordering, please provide the following;

1. The Part Number of the Albutt attachment you require
2. The Make and Model of the loading shovel, telehandler, loader or skidsteer the attachment is to be used with
3. The Type of Carriage fitted to the machine
4. Discuss your requirement with our sales office and confirm by fax or email

Dealer Loyalty

Albutt products are only available through our UK and Worldwide network of dealers. Every product is traceable through our supplying dealer and is accompanied by our industry leading product support package.

Compliance

All Albutt products are CE marked and are supplied with a certificate of conformity complying with current EEC Directives. Albutt products are marked showing SWL, COG, weight & capacity. Under PUWER 98 regulations all Albutt products are supplied with full operating instructions.





Overview

The Albutt range of Grain Buckets have been expertly designed on over 50 years of attachment building experience. A host of standout features truly make the Albutt Grain Buckets market leaders for specification, design and build quality. With brackets designed specifically for the machine and headstock type required, the grain bucket range is able to achieve the maximum crowd and dump angles available.

Features

- Brackets mounted on support straps for even spread of load
- Under floor strapping plates 150 x 15mm
- Optional bolt on cutting edge
- Available with plastic cutting edge for wooden floors; see pictures



Models

Model	Width	Capacity	Height	Depth	Weight
A201-96GB	9'6" / 2.89m	197 cu/ft / 5.68m ³	1.575m	2.073m	1296kg
A171-96GB	9'6" / 2.89m	171 cu/ft / 4.84m ³	1.425m	1.728m	1098kg
A190-90GB	9' / 2.74m	190 cu/ft / 5.38 m ³	1.575m	2.073m	1258kg
A162-90GB	9' / 2.74m	162 cu/ft / 4.60m ³	1.425m	1.728m	1041kg
A141-90GB	9' / 2.74m	141 cu/ft / 4.00m ³	1.337m	1.621m	890kg
A129-90GB	9' / 2.74m	129 cu/ft / 3.66m ³	1.314m	1.471m	761kg
A152-86GB	8'6" / 2.59m	152 cu/ft / 4.30m ³	1.425m	1.728m	1005kg
A133-86GB	8'6" / 2.59m	133 cu/ft / 3.77m ³	1.337m	1.621m	820kg
A120-86GB	8'6" / 2.59m	120 cu/ft / 3.40m ³	1.314m	1.471m	695kg
A112-86GB	8'6" / 2.59m	112 cu/ft / 3.20m ³	1.233m	1.472m	705kg
A100-86GB	8'6" / 2.59m	100 cu/ft / 2.85m ³	1.181m	1.357m	667kg
A144-80GB	8' / 2.44m	144 cu/ft / 4.10m ³	1.425m	1.728m	969kg
A125-80GB	8' / 2.44m	125 cu/ft / 3.54m ³	1.337m	1.621m	766kg
A115-80GB	8' / 2.44m	115 cu/ft / 3.25m ³	1.314m	1.471m	671kg
A105-80GB	8' / 2.44m	105 cu/ft / 2.97m ³	1.233m	1.472m	647kg
A095-80GB	8' / 2.44m	95 cu/ft / 2.70m ³	1.181m	1.357m	614kg
A075-80GB	8' / 2.44m	75 cu/ft / 2.10m ³	1.054m	1.227m	546kg
A135-76GB	7'6" / 2.29m	135 cu/ft / 3.80m ³	1.425m	1.728m	935kg
A095-76GB	7'6" / 2.29m	95 cu/ft / 2.70m ³	1.233m	1.472m	632kg
A089-76GB	7'6" / 2.29m	89 cu/ft / 2.50m ³	1.181m	1.357m	592kg
A070-76GB	7'6" / 2.29m	70 cu/ft / 2.00m ³	1.054m	1.227m	523kg



Overview

The Albutt range of Buckets have been expertly designed on over 50 years of attachment building experience. A host of standout features truly make the Albutt general purpose bucket the market leader in this competitive industry. Brackets are mounted onto straps to spread the load on the bucket shell. All buckets feature a boron 500 welded in toe plate, large corner gussets, rolled back and boron 500 corner heel pads.

8' to 7'6" Wide Models

Model	Width	Capacity	Height	Depth	Weight
A075-80	8' / 2.44m	75 cu/ft / 2.10m ³	1.054m	1.227m	546kg
A063-80	8' / 2.44m	63 cu/ft / 1.78m ³	0.960m	1.090m	505kg
A056-80	8' / 2.44m	56 cu/ft / 1.60m ³	0.901m	1.030m	426kg
A043-80	8' / 2.44m	43 cu/ft / 1.20m ³	0.784m	0.857m	374kg
A032-80	8' / 2.44m	32 cu/ft / 0.90m ³	0.678m	0.702m	330kg
A070-76	7'6" / 2.29m	70 cu/ft / 2.00m ³	1.054m	1.227m	523kg
A060-76	7'6" / 2.29m	60 cu/ft / 1.70m ³	0.960m	1.090m	485kg
A053-76	7'6" / 2.29m	53 cu/ft / 1.50m ³	0.901m	1.030m	409kg
A040-76	7'6" / 2.29m	40 cu/ft / 1.13m ³	0.784m	0.857m	358kg
A030-76	7'6" / 2.29m	30 cu/ft / 0.85m ³	0.678m	0.702m	300kg

Features

- Leading edge & corner pads – 500 Brinell for long life
- Corner gussets – 450mm x 90mm x 5mm
- Brackets mounted on support plates for even load distribution
- Under floor strengthening straps
- Side stiffeners full height of bucket
- Brackets for telehandler or loader included.
- Heavy duty hook profiles
- Hooks full depth of bucket

7' to 4' Wide Models

Model	Width	Capacity	Height	Depth	Weight
A066-70	7' / 2.14m	66 cu/ft / 1.90m ³	1.054m	1.227m	499kg
A056-70	7' / 2.14m	56 cu/ft / 1.60m ³	0.960m	1.090m	462kg
A049-70	7' / 2.14m	49 cu/ft / 1.40m ³	0.901m	1.030m	390kg
A044-70	7' / 2.14m	44 cu/ft / 1.25m ³	0.850m	1.040m	390kg
A037-70	7' / 2.14m	37 cu/ft / 1.05m ³	0.784m	0.857m	342kg
A028-70	7' / 2.14m	28 cu/ft / 0.80m ³	0.678m	0.702m	290kg
A042-66	6'6" / 2.00m	40 cu/ft / 1.13m ³	0.850m	1.040m	370kg
A035-66	6'6" / 2.00m	35 cu/ft / 0.99m ³	0.786m	0.940m	320kg
A026-66	6'6" / 2.00m	26 cu/ft / 0.74m ³	0.700m	0.786m	270kg
A038-60	6' / 1.83m	37 cu/ft / 1.05m ³	0.850m	1.040m	350kg
A032-60	6' / 1.83m	32 cu/ft / 0.90m ³	0.786m	0.940m	300kg
A024-60	6' / 1.83m	24 cu/ft / 0.68m ³	0.700m	0.786m	250kg
A026-50	5' / 1.52m	26 cu/ft / 0.75m ³	0.786m	0.940m	260kg
A018-47	4'7" / 1.40m	18 cu/ft / 0.51m ³	0.700m	0.786m	230kg
A016-40	4' / 1.22m	16 cu/ft / 0.45m ³	0.700m	0.786m	210kg



Overview

OPTIMUS-8 is the highest specification bucket range available from Albutt Attachments. Designed to withstand the toughest of environments, the OPTIMUS-8 range has a host of features specifically aimed at providing a longer operating life compared to other buckets currently available in the UK. If reliability and strength are vital to your operation, make sure you ask your dealer about Albutt OPTIMUS-8.

9' to 8'6" wide Models

Model	Width	Capacity	Height	Depth	Weight
A201-96HD	9'6"	5.68m ³	1,575mm	2,073mm	1,671kg
A171-96HD	9'6"	4.84m ³	1,425mm	1,728mm	1,592kg
A190-90HD	9'	5.38m ³	1,575mm	2,073mm	1,620kg
A162-90HD	9'	4.60m ³	1,425mm	1,728mm	1,530kg
A141-90HD	9'	4.00m ³	1,337mm	1,621mm	1,300kg
A129-90HD	9'	3.66m ³	1,314mm	1,471mm	1,120kg
A063-90HD	9'	1.78m ³	900mm	1,092mm	720kg
A179-86HD	8'6"	5.00m ³	1,575mm	2,073mm	1,570kg
A152-86HD	8'6"	4.30m ³	1,425mm	1,728mm	1,480kg
A133-86HD	8'6"	3.77m ³	1,337mm	1,621mm	1,205kg
A120-86HD	8'6"	3.40m ³	1,314mm	1,471mm	1,045kg
A112-86HD	8'6"	3.20m ³	1,233mm	1,472mm	1,035kg
A060-86HD	8'6"	1.70m ³	900mm	1,092mm	620kg

OPTIMUS 8 HEAVY DUTY BUCKETS

Market Leading Features

- 8mm bucket shell & sides
- HB500 long life leading edge and underside heel pads
- Heavy duty, full length side gussets
- 12mm thick side stiffeners
- Brackets mounted onto support straps for even load distribution
- HB500 bolt on reversible toe plate; Optional
- Pressed rolled bucket back
- Vertical support gussets – A095 buckets and larger

8' to 7' wide Models

Model	Width	Capacity	Height	Depth	Weight
A115-80HD	8'	3.25m ³	1,314mm	1,471mm	990kg
A105-80HD	8'	2.97m ³	1,233mm	1,472mm	960kg
A095-80HD	8'	2.70m ³	1,181mm	1,357mm	870kg
A075-80HD	8'	2.10m ³	1,054mm	1,227mm	688kg
A063-80HD	8'	1.78m ³	960mm	1,090mm	635kg
A056-80HD	8'	1.60m ³	901mm	1,030mm	587kg
A043-80HD	8'	1.20m ³	784mm	857mm	545kg
A070-76HD	7'6"	2.00m ³	1,054mm	1,227mm	660kg
A060-76HD	7'6"	1.70m ³	960mm	1,090mm	610kg
A053-76HD	7'6"	1.50m ³	901mm	1,030mm	562kg
A040-76HD	7'6"	1.13m ³	784mm	857mm	525kg
A066-70HD	7'	1.90m ³	1,054mm	1,227mm	643kg
A056-70HD	7'	1.60m ³	960mm	1,090mm	593kg
A049-70HD	7'	1.40m ³	901mm	1,030mm	545kg
A037-70HD	7'	1.05m ³	784mm	857mm	470kg

HIGH TIP BUCKETS – GRAIN

A050-76HT



A092-80HT



Features

- HARDOX cradle for maximum strength
- Optional bolt on reversible toe plate – 500 Brinell
- Welded base toe plate – 500 Brinell
- Remote greasing points – A092-80HT models and larger
- Twin hydraulic rams
- Bucket cushioning
- Bolt on protective ram covers
- Optional spill guard

Model	Width	Capacity	Weight
A130-90HT	9' / 2.74m	130 cu/ft / 3.68m ³	1400kg
A104-90HT	9' / 2.74m	104 cu/ft / 2.95m ³	1300kg
A123-86HT	8'6" / 2.59m	123 cu/ft / 3.50m ³	1330kg
A098-86HT	8'6" / 2.59m	98 cu/ft / 2.77m ³	1220kg
A116-80HT	8' / 2.44m	116 cu/ft / 3.28m ³	1250kg
A092-80HT	8' / 2.44m	92 cu/ft / 2.60m ³	1000kg
A070-76HT	7'6" / 2.29m	70 cu/ft / 2.00m ³	750kg
A050-76HT	7'6" / 2.29m	50 cu/ft / 1.50m ³	670kg
A042-70HT	7' / 2.13m	42 cu/ft / 1.13m ³	510kg
A035-70HT	7' / 2.13m	35 cu/ft / 0.99m ³	470kg
A025-66HT	6'6" / 2.00m	25 cu/ft / 0.70m ³	390kg



HIGH TIP BUCKETS – MANURE/WASTE

Features

- HARDOX cradle for maximum strength
- STRENX high tensile steel bucket shell
- Bolt on replaceable heel pads – 500 Brinell
- Bolt on reversible toe plate – 500 Brinell
- Welded base toe plate – 500 Brinell
- Remote greasing points
- Bolt on protective ram covers
- Twin hydraulic rams
- Bucket cushioning

Model	Width	Capacity	Weight
WA130-90HTBL	9' / 2.74m	130 cu/ft / 3.68m ³	1620kg
WA104-90HTBL	9' / 2.74m	104 cu/ft / 2.95m ³	1565kg
WA123-86HTBL	8'6" / 2.59m	123 cu/ft / 3.50m ³	1540kg
WA098-86HTBL	8'6" / 2.59m	98 cu/ft / 2.77m ³	1320kg
WA116-80HTBL	8' / 2.44m	116 cu/ft / 3.28m ³	1525kg
WA092-80HTBL	8' / 2.44m	92 cu/ft / 2.60m ³	1300kg
WA070-76HTBL	7'6" / 2.29m	70 cu/ft / 2.00m ³	975kg
WA050-76HTBL	7'6" / 2.29m	50 cu/ft / 1.50m ³	870kg
WA042-70HTBL	7' / 2.13m	42 cu/ft / 1.13m ³	650kg
WA035-70HTBL	7' / 2.13m	35 cu/ft / 0.99m ³	610kg
WA025-66HTBL	6'6" / 2.00m	25 cu/ft / 0.70m ³	495kg



WA104-90HTBL



WA104-90HTBL



Overview

Albutt bucket grabs are a versatile attachment for material handling in agriculture. Offering the features of a bucket and fork grab in one attachment. The bucket features bolted sides which can be removed for muck handling etc. The wide opening grab features Hardox high tensile steel tines which are welded into a thick walled tube, providing high strength and long term reliability. The bucket edge can touch a vertical face with the grab open, allowing corners in buildings to be cleared. This new attachment is suitable for use with telehandlers and loaders.

Features

- Genuine Hardox grab tines
- Open/close grab stops for ram and pin protection
- Removable side panels for extra capacity
- External Hardox wear pads
- Internal Hardox corner gussets
- Inward facing ram ports for spill protection
- Brackets included
- Wide opening grab – 1740mm/1430mm

Models

Model	Width	Capacity	Height	Depth	Weight
A085-80BGHX	8' / 2.44m	85 cu/ft / 2.35m ³	950mm	1350mm	1065kg
A059-80BGHX	8' / 2.44m	58 cu/ft / 1.64m ³	786mm	1010mm	810kg
A081-76BGHX	7'6" / 2.30m	80 cu/ft / 2.20m ³	950mm	1350mm	1000kg
A055-76BGHX	7'6" / 2.30m	54 cu/ft / 1.53m ³	786mm	1010mm	780kg
A051-70BGHX	7' / 2.13m	50 cu/ft / 1.42m ³	786mm	1010mm	750kg
A048-66BGHX	6'6" / 2.00m	47 cu/ft / 1.30m ³	786mm	1010mm	700kg
A043-60BGHX	6' / 1.83m	43 cu/ft / 1.22m ³	786mm	1010mm	680kg





Overview

The Albutt 4 in 1 Bucket incorporates Hardox steel to provide a multi purpose attachment suitable for a variety of applications. The attachments can be use as a bucket, clamp, grader and digger. Serrated edges providing extra grip when clamping. Ideal for use on Telehandlers, Tractor Loaders or Skidsteers the Albutt 4 in 1 bucket utilises high capacity hydraulic cylinders and high grade pins for long operating life.

Features

- HB500 Brinell cutting edge
- Hardox side plates
- Serrated edges
- 3 cutting edges
- Brackets included to suit your machine
- Can be used as a bucket, clamp, digger or grader
- High grade pins
- High capacity hydraulic cylinders

Models

Model	Width	Capacity	Weight
A028-80CS	8' / 2.44m	28 cu/ft / 0.75m ³	720kg
A026-76CS	7'6" / 2.30m	26 cu/ft / 0.74m ³	695kg
A020-72CS	7'2" / 2.20m	20 cu/ft / 0.56m ³	440kg
A018-66CS	6'6" / 2.00m	18 cu/ft / 0.51m ³	410kg
A015-57CS	5'7" / 1.70m	15 cu/ft / 0.42m ³	380kg
A011-53CS*	5'3" / 1.61m	11 cu/ft / 0.28m ³	300kg
A009-411CS*	4'11" / 1.50m	9 cu/ft / 0.25m ³	260kg

*Suitable for Skidsteers only





A089-80CS



CLAM SHELL BUCKETS

Overview

The Albutt Clam Shell Bucket provides an alternate means of loading material such as manure, grain and woodchip. Particularly for loading chicken manure, the Clam Shell design has major benefits as the operating rams are situated vertically, away from the floor of the bucket. This eliminates the danger of manure clogging the ram causing pin breakages and failures. By the floor opening, compared to a tipping action, less height is required to unload, meaning the Clam Shell Bucket excels being used on Loading Shovels.

Features

- Strenx high tensile steel shell
- Hardox wear parts
- HB500 Brinell leading edges
- HB500 bolt on reversible toe plate – fitted as standard
- Bolt on ram covers for spill protection
- Spill guard
- Suitable for manure, grain, woodchip & compost
- Over centre valve locks hydraulic flow

Models

Model	Width	Capacity	Height	Depth	Weight
A089-80CS	8' / 2.44m	89 cu/ft / 2.50m ³	1396mm	1041mm	1150kg
A070-76CS	7'6" / 2.29m	70 cu/ft / 2.00m ³	1116mm	832mm	1070kg





Overview

The Albutt range of JCB Teletruk buckets have been designed to provide a heavy duty, cost effective solution to operating in a number of industries. The ranges consist of our standard GP bucket, our high tip bucket and our Bucket Grab – all suitable for us in either Agricultural or Waste applications.

Features

- Specifically designed for the JCB Teletruk
- Increase your height and forward reach with an Albutt High Tip Bucket
- Heavy duty grab range utilises high capacity rams, removable side panels, open and close grab stops and high grade pins
- Optional machine fittings – Class 2, Class 3, or Changeeze

Rehandling Buckets

Model	Width	Capacity	Height	Depth	Weight
A037-60TLT	6' / 1.83m	35 cu/ft / 1.00 m ³	840mm	965mm	340kg
A025-50TLT	5' / 1.52m	25 cu/ft / 0.70 m ³	760mm	955mm	260kg
A021-43TLT	4'3" / 1.30m	21 cu/ft / 0.60 m ³	760mm	955mm	240kg

Bucket Grab

Model	Width	Capacity	Height	Depth	Weight
A038-51BG	5'1" / 1.55m	28 cu/ft / 1.08m ³	786mm	1.010mm	540kg

High Tip Bucket

Model	Width	Capacity	Height	Depth	Weight
A028-50HT	5' / 1.52 m	28 cu/ft / 0.80 m ³	920 mm	1,050 mm	480kg



BAG FILLING BUCKETS

Overview

The Albutt Bag Filling Bucket is the ultimate time saving attachment for use in busy yards. It allows the quick fill of tote bags with heavy free flowing material such as sand, aggregate, gravel etc. To be used with any Telehandler or loader, trailers and vans can also be filled with precise control. The design means that when bags are filled they can be accurately stacked or loaded onto trailers and trucks.

Features

- Strenx high tensile steel bucket shell
- Hardox ultra hard wearing wear pads
- HB500 Brinell leading edge
- Horizontal, direct acting ram (no chain system)
- Over pressure protection
- Easy maintenance; Nylon bushes, manually adjustable cylinder stroke
- Fill 40 bags per hour
- Bolt on arm option for full sleeve bags
- Recommended to be used with Albutt's Bolt on Bracket system – see page 111

Models

Model	Capacity	Width	Weight
BF500	0.50m ³	1220mm	370kg
BF600	0.60m ³	1330mm	390kg
BF1000	1.00m ³	1600mm	440kg





Bucket Brushes



V-Concept

Bucket Brush Sweepers

- Hydraulic drive; max flow 60 lpm / max pressure 207bar*
- Supplied with quick hitch mounting brackets and hydraulic hoses
- Galvanised canopy
- Poly brushes
- Minimum bucket height required – 780mm
- Can be stored upright

*Available with an optional relief valve if your machine exceeds these values

V-Concept Sweepers

- Innovative patented 'V' design
- Pallet tine mounted as standard
- Optional anti-scattering kit
- Suitable for a variety of applications
- Locks behind fork heel
- Cost effective solution for managing site areas
- Cheap to run and maintain

Bucket Brushes

Model	To fit Bucket Width
SB40	5'9" (1750mm) to 6'6" (1980mm)
SB60	6'6" (1980mm) to 7'3" (2210mm)
SB80	7'3" (2210mm) to 7'10" (2387mm)
SB100	7'10" (2387mm) to 8'8" (2640mm)

V-Concept Sweepers

Model	Width	Bristles	Bristle Depth
V7-1800	1800mm	3 x straight / 2 x 'V' / 2 x mini rows	230mm
V7-2400	2400mm	3 x straight / 2 x 'V' / 2 x mini rows	230mm



Overview

The Albutt range of Heavy Duty Buck Rakes are designed for use with high horsepower tractors or loading shovels. Tractor horsepower requirement is 160hp rear linkage and 180hp front linkage. Front linkage rating requirement is 5 tonnes.

The range is renowned for being the global market leader with many repeat orders from Australia, New Zealand, USA and Canada. An unrivalled specification includes a 200 x 100mm tine holder, high grade mesh gate and high capacity hydraulic cylinders.

Features

- 1650mm genuine Hardox base tines
- Double side tines
- 200 x 100mm tine holder
- High flow divider valve to prevent gate twists on uneven loads
- 75mm ram bore size
- 35mm diameter ram pivot pins
- 5 hole top link positions
- Angled tine holder top to prevent silage build up
- Leant forward spill frame on gate
- High grade mesh gate gives strength but great visibility
- Double profile gate mounting prevents arms bending
- 60mm diameter main pivot pin

Models

Model	Width	Capacity	Height	Tines	Weight
B808PPHX	8' / 2.44m	169 cu/ft / 4.80m ³	1733mm	10	1220kg
B809PPHX	9' / 2.74m	191 cu/ft / 5.43m ³	1733mm	11	1320kg
B810PPHX	10' / 3.05m	215 cu/ft / 6.08m ³	1733mm	12	1400kg
B812PPHX	12' / 3.66m	240 cu/ft / 6.79m ³	1733mm	14	1570kg



Overview

The Albutt range of Buck Rakes are designed for to provide a strong, reliable partner for your clamp tractor or loading shovel. The new high capacity gate is manufactured from high grade weldmesh, giving ultimate strength whilst offering great visibility. Pin size, tine holder thickness, ram size and overall design are unrivalled in the Buck Rake market and subsequently they are used all over the world from Australia and New Zealand to USA and Canada. All models comes as standard with double side tines.

Features

- 1400mm spoon end tines
- 60mm diameter main pivot pin
- Double side tines
- High flow divider valve to prevent gate twists
- 3 position top link holes
- Top of tine holder angled to prevent silage build up
- 100 x 100 x 10mm tine holder
- Double profile gate mounting to prevent arms bending
- Leant forward spill frame on gate
- Suitable for Tractor 3 point linkage or Telehandler brackets (optional extra)
- High grade EXP mesh gate

Models

Model	Width	Capacity	Height	Tines	Weight
B808PP	8' / 2.44m	125 cu/ft / 3.53m ³	1546mm	15	980kg
B809PP	9' / 2.74m	140 cu/ft / 3.96m ³	1546mm	16	1020kg
B810PP	10' / 3.05m	156 cu/ft / 4.41m ³	1546mm	18	1060kg



Overview

The Albutt Folding Push Off Buckrake is the flagship Buckrake model from Albutt Attachments, offering the very best fork for clamp efficiency.

Closing to 9'9" for road transport, the Folding Push Off Buckrake opens to 14' to suit the largest horsepower tractors and loading shovels – allowing them to keep pace with the silage team. As standard the fork comes with 1650mm long genuine Hardox tines, a hydraulic accumulator, double side tines and three point linkage or loading shovel brackets. It also has the option of work lights for night time clamping.

Perhaps it's most important feature is the anti-collision valves which prevent the gate and wings colliding. They also mean the gate and wing operation can be switched over from the cab meaning only one service is required to operate the attachment.

Features

- 1650mm long genuine Hardox tines
- Anti-collision valves - prevents gate/wing colliding
- Only 1 service required
- Hydraulic accumulator
- Opens to 14' closes to 9'9"
- Nylon gate rollers/runners
- Z-type linkage allows for full width gate
- Double side tines
- High flow divider valve to prevent gate twists
- Three point linkage or loading shovel brackets

Models

Model	Open	Closed	Height	Capacity	Tines	Weight
B824PPHX	14' / 4.27m	9'9" / 2.97m	1735mm	7.82m ³	16	2200kg





Overview

The Albutt Folding Fork is designed to maximise the potential of your clamp machine. By featuring wings that close during road transport, the Folding Fork can spread its wings for clamp use and such considerably increase its capacity. A market leading specification includes a 200 x 100mm tine holder, 1650mm genuine Hardox base tines, a shock protecting hydraulic accumulator as standard and use of Strenx and Hardox in key stress areas. Trusted the world over, the Fork is regularly sent abroad and used by major OEM's on their demonstration machines.

Features

- Strenx high tensile fork back for maximum strength
- Hardox base tines – 1650mm long
- 200 x 100mm base tine holder with Hardox wear strip
- Hydraulic accumulator to maintain pressurised float
- Secure-lock wings for road transport
- Large visibility slots
- Open wing locator profiles
- Double side tines
- Recognised marketing leader for specification and design

Models

Model	Open	Closed	Height	Capacity	Tines	Weight
B922HX	12' / 3.70m	9'9" / 2.97m	1570mm	7.20m ³	14	1570kg
B924HX	14' / 4.27m	9'9" / 2.97m	1570mm	8.30m ³	16	1690kg
B926HX	16' / 4.88m	9'9" / 2.97m	1570mm	9.60m ³	18	1820kg

Options

Part No.	Description
FF-WL	Work Lights c/w 3 Point Plug
FF-NP	Personalised Name Plate





Overview

The Albutt range of Grass Forks offer a robust solution for loading into your clamp. Designed as a fixed version of our Folding Fork, the Grass Fork range utilises the same 1650mm Hardox tine base and high tensile steel Strenx fork back. With models for both Loading Shovels and Telehandlers, the range comes in a range of widths from 8' to 12' wide.

Features

- Strenx high tensile steel fork back
- 1650mm long genuine Hardox tines
- Complete with side tines
- Large visibility slots
- 200 x 100mm base tine holder
- Full width base wear strip
- Optional spill guard on loading shovel models

Telehandler Models

Model	Width	Capacity	Height	No. Tines	Weight
B708HX	8' / 2.44m	3.70m ³	1216mm	10	920kg
B709HX	9' / 2.79m	4.16m ³	1216mm	11	1000kg
B710HX	10' / 3.05m	4.60m ³	1216mm	12	1080kg

Loading Shovel Models

Model	Width	Capacity	Height	No. Tines	Weight
B908HXF	8' / 2.44m	4.89m ³	1496mm	10	1001kg
B909HXF	9' / 2.79m	5.54m ³	1496mm	11	1084kg
B910HXF	10' / 3.05m	6.21m ³	1496mm	12	1169kg
B912HXF	12' / 3.70m	7.53m ³	1496mm	14	1336kg





MANURE FORKS – B SERIES

Overview

The B Series range of Manure Forks are designed for handlers with a lift capacity of over 4 tonnes. The fork features a solid fork back to protect the headstock and hydraulics of the machine whilst cut outs are strategically placed to aid visibility of the task in hand. The market leading specification is bolstered by a full width base wear strip on the underside of the tine holder.

Features

- For machines with a minimum 4 tonne lift capacity
- Choice of KV type or Hardox tines
- Full width base wear pad
- Base tine length; Hardox 1240mm / KV type 1100mm
- Strategically placed cut outs to aid visibility
- Solid fork back to protect headstock and hydraulics

Hardox Tine Models

Model	Width	Capacity	Height	No. Tines	Weight
B566HX	6'6" / 2.00m	70 cu/ft / 2.00m ³	1034mm	8	540kg
B570HX	7' / 2.13m	74 cu/ft / 2.10m ³	1034mm	8	570kg
B576HX	7'6" / 2.30m	80 cu/ft / 2.26m ³	1034mm	9	590kg
B580HX	8' / 2.44m	95 cu/ft / 2.40m ³	1034mm	10	620kg
B590HX	9' / 2.74m	96 cu/ft / 2.70m ³	1034mm	11	670kg

KV Type Tine Models

Model	Width	Capacity	Height	No. Tines	Weight
B466	6'6" / 2.00m	60 cu/ft / 1.70m ³	1034mm	9	370kg
B470	7' / 2.13m	63 cu/ft / 1.80m ³	1034mm	9	400kg
B476	7'6" / 2.30m	68 cu/ft / 1.95m ³	1034mm	10	420kg
B480	8' / 2.44m	74 cu/ft / 2.10m ³	1034mm	11	440kg





MANURE FORKS – C SERIES

Overview

The C Series range of Manure Forks are designed for handlers with a lift capacity of between 2 and 4 tonnes. The fork features a solid fork back to protect the headstock and hydraulics of the machine whilst cut outs are strategically placed to aid visibility of the task in hand. The market leading specification is bolstered by a full width base wear strip on the underside of the tine holder.

Features

- For machines with a 2-4 tonne lift capacity
- Available with Hardox or KV type tines
- Full width base wear pad
- Base Tine length; Hardox 970mm / KV type 980mm
- Solid fork back to protect headstock and hydraulics

Hardox Tine Models

Model	Width	Capacity	Height	No. Tines	Weight
C366HX	6'6" / 2.00m	47 cu/ft / 1.33m ³	852mm	9	410kg
C370HX	7' / 2.13m	50 cu/ft / 1.41m ³	852mm	9	440kg
C376HX	7'6" / 2.30m	55 cu/ft / 1.56m ³	852mm	10	480kg

KV Type Tine Models

Model	Width	Capacity	Height	No. Tines	Weight
C366	6'6" / 2.00m	47 cu/ft / 1.33m ³	852mm	9	360kg
C370	7' / 2.13m	50 cu/ft / 1.41m ³	852mm	9	390kg
C376	7'6" / 2.30m	55 cu/ft / 1.56m ³	852mm	10	420kg





MANURE FORKS – E SERIES

Overview

The E Series range of Manure Forks are designed for tractor loaders and skidsteers with up to 2 tonne lift capacity. The fork features a solid fork back to protect the headstock and hydraulics of the machine whilst cut outs are strategically placed to aid visibility of the task in hand. A full width wear strip is fitted to the underside of the tine holder adding to the robust design of the E Series range.

Hardox Tine Models

Model	Width	Capacity	Height	No. Tines	Weight
E324HX	4'1" / 1.24m	21 cu/ft / 0.62m ³	678mm	7	180kg
E340HX	4'7" / 1.40m	24 cu/ft / 0.70m ³	678mm	7	210kg
E360HX	5'3" / 1.60m	27 cu/ft / 0.80m ³	678mm	8	230kg
E380HX	5'11" / 1.80m	31 cu/ft / 0.90m ³	678mm	9	250kg
E400HX	6'7" / 2.00m	35 cu/ft / 1.00m ³	678mm	10	270kg
E410HX	7' / 2.13m	38 cu/ft / 1.07m ³	678mm	10	300kg

KV Type Tine Models

Model	Width	Capacity	Height	No. Tines	Weight
E324	4'1" / 1.24m	21 cu/ft / 0.62m ³	678mm	7	170kg
E340	4'7" / 1.40m	24 cu/ft / 0.70m ³	678mm	7	200kg
E360	5'3" / 1.60m	27 cu/ft / 0.80m ³	678mm	8	220kg
E380	5'11" / 1.80m	31 cu/ft / 0.90m ³	678mm	9	240kg
E400	6'7" / 2.00m	35 cu/ft / 1.00m ³	678mm	10	260kg
E410	7' / 2.13m	38 cu/ft / 1.07m ³	678mm	10	290kg

Features

- For tractor loaders and skidsteers
- Choice of KV type tines or Hardox tines
- Full width base wear pad
- Base Tine length; Hardox 800mm / KV type 760mm
- Strategically placed cut outs to aid visibility
- Solid fork back to protect headstock and hydraulics





FORK AND GRABS – B SERIES

Overview

The B Series range of manure fork and grabs are designed for handlers with a 4 tonne plus lift capacity. The ultra-heavy duty design comprises of a Hardox tine base, full width base wear strip, grab stops for ram and pin protection, and a strategically placed fork back for hydraulic and headstock protection.

Features

- For machines with a minimum 4 tonne lift capacity
- Hardox tines
- 35mm Ø top and bottom plated pins
- 45mm Ø pivot plated pins
- Heavy duty grab stops for ram seal and pin protection
- 75mm Ø bore rams
- Grab opens to 1905mm
- 1240mm long genuine Hardox Base Tines
- DX bushes in cylinder ends
- Inward facing tees on rams
- Large side visibility cut outs
- Full width base wear strip

Models

Model	Width	Capacity	Height	Base Tines	Grab Tines	Weight
B666HXG	6'6" / 2.00m	81 cu/ft / 2.30m ³	1264mm	8	5	820kg
B670HXG	7' / 2.13m	85 cu/ft / 2.42m ³	1264mm	8	6	870kg
B676HXG	7'6" / 2.30m	92 cu/ft / 2.60m ³	1264mm	9	6	910kg
B680HXG	8' / 2.44m	98 cu/ft / 2.76m ³	1264mm	10	6	960kg
B690HXG	9' / 2.74m	110cu/ft / 3.10m ³	1264mm	11	7	1050kg





FORK AND GRABS – C SERIES

Overview

The C Series range of manure fork and grabs are designed for handlers with a 2-4 tonne lift capacity. The heavy duty design comprises of a choice of Hardox or KV type tines, full width base wear strip, grab stops for ram and pin protection, and a strategically placed fork back for hydraulic and headstock protection.

Hardox Tine Models

Model	Width	Capacity	Height	Base Tines	Grab Tines	Weight
C560HXG	6' / 1.83m	44 cu/ft / 1.24m ³	1044mm	8	5	540kg
C566HXG	6'6" / 2.00m	46 cu/ft / 1.30m ³	1044mm	9	5	570kg
C570HXG	7' / 2.13m	50 cu/ft / 1.41m ³	1044mm	9	6	610kg
C576HXG	7'6" / 2.30m	55 cu/ft / 1.56m ³	1044mm	10	6	640kg
C580HXG	8' / 2.44m	60 cu/ft / 1.70m ³	1044mm	11	7	670kg

KV Type Tine Models

Model	Width	Capacity	Height	Base Tines	Grab Tines	Weight
C560	6' / 1.83m	44 cu/ft / 1.24m ³	1044mm	8	5	510kg
C566	6'6" / 2.00m	46 cu/ft / 1.30m ³	1044mm	9	5	540kg
C570	7' / 2.13m	50 cu/ft / 1.41m ³	1044mm	9	6	570kg
C576	7'6" / 2.30m	55 cu/ft / 1.56m ³	1044mm	10	6	600kg
C580	8' / 2.44m	60 cu/ft / 1.70m ³	1044mm	11	7	630kg

Features

- For machines with a 2-4 tonne lift capacity
- Choice of KV type or Hardox tines
- 35mm Ø top and bottom plated ram pins
- 45mm Ø pivot plated pins
- Heavy duty grab stops for ram seal and pin protection
- Grab opens to 1480mm
- Base Tine length; Hardox 970mm / KV type 980mm
- Inward facing tees on rams
- Large side visibility cut outs
- Full width base wear strip





FORK AND GRABS – E SERIES

Overview

The E Series range of manure fork and grabs are designed for tractor loaders and skidsteers with up to 2 tonne lift capacity. The fork features a solid fork back to protect the headstock and hydraulics of the machine whilst cut outs are strategically placed to aid visibility of the task in hand. The design comprises of a choice of KV type or Hardox tines, a full width wear strip and high capacity hydraulic cylinders.

Hardox Tine Models

Model	Width	Capacity	Height	Base Tines	Grab Tines	Weight
E324HXG	4'1" / 1.24m	21 cu/ft / 0.62m ³	789mm	7	4	290kg
E340HXG	4'7" / 1.40m	24 cu/ft / 0.70m ³	789mm	7	4	300kg
E360HXG	5'3" / 1.60m	27 cu/ft / 0.80m ³	789mm	8	5	340kg
E380HXG	5'11" / 1.80m	31 cu/ft / 0.90m ³	789mm	9	5	360kg
E400HXG	6'7" / 2.00m	35 cu/ft / 1.00m ³	789mm	10	6	380kg
E410HXG	7' / 2.13m	38 cu/ft / 1.07m ³	789mm	10	6	400kg

KV Type Tine Models

Model	Width	Capacity	Height	Base Tines	Grab Tines	Weight
E324G	4'1" / 1.24m	21 cu/ft / 0.62m ³	789mm	7	4	260kg
E340G	4'7" / 1.40m	24 cu/ft / 0.70m ³	789mm	7	4	290kg
E360G	5'3" / 1.60m	27 cu/ft / 0.80m ³	789mm	8	5	330kg
E380G	5'11" / 1.80m	31 cu/ft / 0.90m ³	789mm	9	5	360kg
E400G	6'7" / 2.00m	35 cu/ft / 1.00m ³	789mm	10	6	375kg
E410G	7' / 2.13m	38 cu/ft / 1.07m ³	789mm	10	6	385kg

Features

- For Tractor Loaders and Skidsteers
- 25mm Ø top and bottom plated pins
- 30mm Ø pivot plated pins
- Optional side tines
- Grab opens to 1060mm
- Base Tine length; Hardox 800mm / KV type 760mm
- Full width base wear strip





Overview

The Albutt Shear Grab range is designed to give users a strong, reliable option for cutting clamped silage. Trusted all over the world, the Albutt name is synonymous with a quality Shear Grab product. High capacity rams, strategically placed offer unrivalled clamping power, with a Hardox blade leaving a smooth clamp face. For maximum durability and strength, choose the Hardox tine models. Providing 2-3 times better wear than mild steel, the tines are almost unbreakable. As they are welded into the shear grab, users eliminate the requirement to tighten tines as a part of their routine maintenance.

Features

- Hardox cutting blades and teeth
- Double skinned front grab
- Heavy duty thick walled box sections
- Tine options – KV type or Hardox
- 50mm diameter pivot pins
- 90mm bore rams
- 3 rams on S190 and above
- Central cutting blade on S190 and above
- Recommended to be used with Albutt's bolt on bracket system – see page 111
- Height 843mm / Depth 975mm / Jaw Opening 760mm

KV Type Tine Models

Model	Width	Tines	Centre Blade	Rams	Capacity	Weight
S130	1300mm	10	No	2 x 90mm	0.70m ³	410kg
S160	1600mm	12	No	2 x 90mm	0.85m ³	470kg
S190	1900mm	14	Yes	3 x 90mm	1.00m ³	670kg
S220	2200mm	16	Yes	3 x 90mm	1.15m ³	725kg

Hardox Models

Model	Width	Tines	Centre Blade	Rams	Capacity	Weight
S160HX	1600mm	12	No	2 x 90mm	0.85m ³	535kg
S190HX	1900mm	14	Yes	3 x 90mm	1.00m ³	760kg
S220HX	2200mm	16	Yes	3 x 90mm	1.15m ³	810kg



Shear King SK250HX



Shear King Mini



SHEAR KING/SHEAR KING MINI

Overview

The Shear King and Shear King Mini range of high capacity Shear Grabs are designed for users wishing to cut and move large volumes of clamp silage and maximise the productivity of their machine. Featuring high tensile steels throughout (Hardox and Strenx) the ultra-heavy duty build quality ensures the grab is suitable for intense cycles. Both ranges come with Hardox tines as standard and feature 115mm or 125mm diameter bore rams depending on model. With the large capacity of the Shear King grabs, the number of cuts and journey times can be reduced, improving silage quality and handling efficiency.

Shear King Mini

Model	Width	Tines	Rams	Capacity	Weight
SKM190HX	1900mm	13	2 x 115mm	1.40m ³	1010kg
SKM220HX	2200mm	15	2 x 115mm	1.60m ³	1120kg
SKM250HX	2500mm	17	2 x 115mm	1.80m ³	1220kg

Shear King

Model	Width	Tines	Rams	Capacity	Weight
SK220HX	2200mm	15	2 x 125mm	2.20m ³	1320kg
SK250HX	2500mm	17	2 x 125mm	2.50m ³	1390kg

Features

- Strenx high tensile steel grab
- Hardox tines
- Hardox cutting blades and teeth
- 60mm diameter pivot pins
- Suitable for grass, maize and wholecrop
- Recommended to be used with Albutt's Bolt on Bracket system – see page 111
- SKM height 1085mm / depth 1157mm / jaw opening 946mm
- SK height 1229mm / depth 1323mm / jaw opening 1111mm





Overview

The Albutt Shear Bucket range is based on the ultra-high strength design of the Shear King range, providing excellent cutting capabilities on all silage types. The grab is taken directly off of the Shear King Mini and features the same high tensile steels (Hardox & Strenx) throughout. The bucket floor is braced by underside Hardox tines for maximum durability. Across the front edge of the bucket is a specially commissioned Hardox cutting edge, sharpened to enter the pit face as clean as possible. This process is bolstered by cutting edges to the side profiles of the bucket.

Features

- Hardox cutting blades to the front and side of the grab
- High tensile Strenx front blade
- Twin double acting hydraulic rams
- Heavy duty box sections; 10mm wall
- Front grab double skinned for maximum strength
- Suitable for maize, wholecrop and precision chopped grass silage
- Hardox tines brace the bucket floor
- Recommended to be used with Albutt's Bolt on Brackets system – see page 111

Shear Buckets

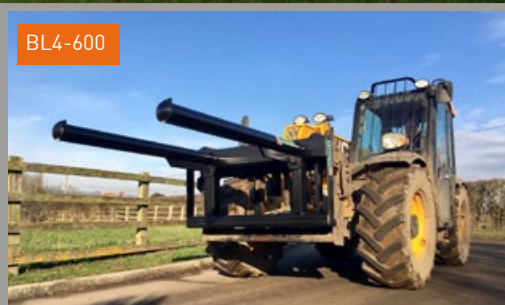
Model	Width	Capacity	Bore Size	Opening	Weight
SB190HX	1900mm	1.00m ³	2 x 100mm	760mm	760kg
SB220HX	2200mm	1.25m ³	2 x 100mm	760mm	815kg
SKMB190HX	1900mm	1.40m ³	2 x 115mm	946mm	1070kg
SKMB220HX	2200mm	1.60m ³	2 x 115mm	946mm	1150kg
SKMB250HX	2500mm	1.80m ³	2 x 115mm	946mm	1320kg
SKB220HX	2200mm	2.20m ³	2 x 125mm	1111mm	1520kg
SKB250HX	2500mm	2.50m ³	2 x 125mm	1111mm	1590kg



BL4-1000



BL4-600



BL4H-1000



Overview

The Albutt range of Bag Lifters are designed to give a safe lifting option for handling 600kg and 1000kg bags. Designed to be used with telehandlers or loaders, the bag handler simplifies the safe unloading and stacking of fertiliser and seed bags. Every model comes complete with brackets suit your machine, is CE marked with test certificate and comes with a certificate of conformity.

The hydraulic Bag Lifter offers the best in site efficiency by allowing all bag types to be moved with a single bag lifter. The arms simply move to suit your required by size by the comfort of the cab.

Features

- Models for 1000kg and 600kg bags
- Fixed and adjustable arm models
- Arm spacings on the BL4H-1000 can be adjusted hydraulically from the cab
- Arm spacings designed to reduce bag swing
- Supplied with test certificate
- Stops to reduce risk of bags sliding from arms
- Brackets included

Models

Model	Will handle;	Arm Length	Weight
BL1-1000	1 x 1000kg bag	800mm	140kg
BL2-1000	2 x 1000kg bags	800mm	185kg
BL4-600	4 x 600kg bags	1400mm	230kg
BL4-1000	4 x 1000kg bags	1750mm	260kg
BL4H-1000	4 x 600kg bags / 4 x 1000kg bags Adjustable arms	2000mm	290kg



Overview

The Albutt Grain Pusher range is designed for use with telehandlers, loaders and shovel loaders with quick release brackets available to suit your machine. The heavy-duty design incorporates round and smooth surfaces to prevent grain trapping. The modular frame means all sizes can be extended by 3 or 6ft. We offer an optional plastic wear strip for floor protection. Both extensions and plastic wear strip can be retro fitted. All come as standard in high visibility yellow paint, aiding use in darker, indoor grain stores.

Features

- Round tube design keeps grain in the store, not in the yard
- 2300mm x 1000mm blade
- Modular design; length can be added if required
- High visibility yellow paint finish
- Optional nylon wear strip
- Optional bolt on extensions; 3' and 6' long
- Optional heavy duty back frame; discuss with our Sales Team
- Recommended to be used with Albutt's Bolt on Bracket system – see page 111

Models

Model	Length	Width	Weight
H101	3.05m (10')	2.32m	480kg
H121	3.66m (12')	2.32m	500kg
H141	4.27m (14')	2.32m	520kg



Overview

The Albutt Telescrape Yard Scraper offers a fully floating design to scrape uneven surfaces. Designed for use on Telehandlers and Tractor Loaders, it offers greater advantages over conventional, lighter duty scrapers. A fully reversible; 'Push' or 'Pull' action, the unique design is one of Albutt's most popular with many units being exported across the world each year. Operation of the 'Pull' / 'Push' mechanism is all done from the comfort of the cab; simply lift the boom and rotate the headstock to put the Scraper into the desired position.

Features

- Fully floating design for scraping uneven surfaces
- 50mm, reversible heavy-duty rubber blades
- Push and pull action; no requirement for trip rope
- Automatic down pressure control
- Galvanized finish
- Adjustable width; 3 positions
- Ultra heavy-duty design; suitable for telehandlers
- Recommended to be used with Albutt's Bolt on Brackets system – see page 111

Models

Model	Width	Blade	Weight
YS30GV	1.8m to 2.7m	150x50mm	410kg
YS50GV	2.2m to 3.1m	150x50mm	480kg



Overview

The Albutt Snow Plough range have been developed for use with Telehandlers, Loaders, Tractors and Groundcare machinery. Available in four widths, they are supplied with brackets to suit your machine.

The blade can be angled both sides, with a choice of manual or hydraulic control. Fitted with guide castors (height adjustable), a replaceable rubber wear edge and parking legs, the Albutt range of Snow Ploughs provide a cost effective and reliable solution for snow clearance. Trusted the world over, many are used in the harsh conditions in Russia each year.

Features

- Four widths, 1600mm, 2130mm, 2540mm and 2800mm
- Recommended to be used with Albutt's Bolt on Brackets system – see page 111
- Manual or hydraulic angle control - 25°
- Parking legs
- Replaceable rubber wear edge
- Shock absorbing rubber bump pads (hydraulic models)
- High visibility orange livery
- Height adjustable castor wheels

Models

Model	Blade Width	Track Covered	Height	Weight
SP53*	5'3" / 1600mm	4'9" / 1518mm	2' / 610mm	330kg
SP70	7' / 2133mm	6'6" / 2003mm	2' / 610mm	340kg
SP84	8'4" / 2540mm	7'8" / 2370mm	2' / 610mm	370kg
SP92	9'2" / 2794mm	8'6" / 2606mm	2' / 610mm	450kg

Add 'H' to any part number for hydraulic angling

*not available with hydraulic angling



Combi-Spikes

- 2 x 810mm tines / Optional 980mm top tine
- Optional Bale Support Arms – Increases height to 1240mm
- Brackets integrated into the frame

Model	Will Handle	Brackets
ES100	1 x round 1 x mini hesston	Euro
CS100/JCBQF	1 x round 1 x mini hesston	JCB Q Fit
CS100/PC	1 x round 1 x mini hesston	Pin and Cone
CS100/MAN	1 x round 1 x mini hesston	Manitou
CS100/MER	1 x round 1 x mini hesston	Merlo



Round Bale Spikes

- Substantial heavy duty box section design
- F100 1 x 980mm tines with 1 x support tine
- F110 2 x 980mm tines with 2 x support tines
- Bolt on brackets extra

Model	Will Handle	Weight
F100	1 x round bale	55kg
F110	2 x round bales	75kg

Rectangular Bale Spikes

- Removable back frame – 2136mm tall with / 1080mm tall without
- 3 x 980mm tines – other sizes available
- Optional fold up tine facility
- Bolt on brackets extra

Model	Will Handle	Weight
F131	2 x hesstons 3 x mini hesstons	153kg
F131/FT	“ ” plus tines fold for road transport	185kg



Multi Bale Spike

- Height adjustable back frame – 1770mm to 2270mm
- 3 x 980mm tines / 4 x 810mm tines
- For round and square bales
- Bolt on brackets extra

Model	Will Handle	Weight
F125	2 x rounds 2 x hesstons 3 x mini hesstons 4 x quadrants 6 x mini quadrants	210kg



F650HX



F501

F501 / F650HX – MULTI BALE STACKERS

F501 – Features

- Handle square or round bales
- Suitable for Telehandlers
- KV type tines
- Hardox central bracing system
- Synchronised wing movement
- Eliminate double handling
- Utilise barn space
- Tines are released from bale before movement of machine
- Recommended to be used with Albutt's bolt on bracket system – See page 115

F650HX Bale King – Features

- Handle square or round bales
- Suitable for Telehandlers & Loading Shovels (minimum 3.50 tonne capacity)
- Choice of Hardox or KV type tines
- Twin rams
- Flow control valve – synchronized wing movement
- Floating bottom tine bar
- Tine bar folds vertical for road transport
- Recommended to be used with Albutt's Bolt on Brackets system – see page 111

Models

Model	Tines	Will Handle	Capacity	Weight
F501	KV type	2 x Hesstons 3 x Mini Hesstons 2 x Rounds	1200kg	450kg
F650HX	Hardox	3 x Hesstons 3 x Rounds	1800kg	750kg
F650K	KV type	3 x Hesstons / 4 x Mini Hesstons 3 x Rounds 5 x Quadrants	1800kg	750kg



F140A



F150A



F155A



F160A



Overview

The Albutt heavy duty bale grabs are designed for use with telehandlers, loading shovels and tractor loaders. Available with attachment brackets to suit your machine. The range comprises of 4 models covering all sizes of bales from 8 conventional to hesston bales. All models feature forged steel claws for high strength and long life. Heavy duty, double acting rams provide sufficient power for claw penetration.

Features

- Cast claws for easy penetration and secure grip
- High capacity hydraulic cylinders
- Guide bar for mounting on both sides
- Parking leg
- Heavy duty box section frame
- Bracing from front to rear of grab
- Models to suit all bale types
- Recommended to be used with Albutt's Bolt on Brackets system – see page 111
- Market leading specification
- Simultaneous claw entry

Models

Model	No. Claws	Length	Width	Will Handle
F140A	16	2050mm	1724mm	8 x conventional bales 2 x 800mm bales
F150A HD	24	2450mm	2330mm	2 x 1200mm bales 3 x 800mm bales
F155A HD	40	2570mm	2660mm	3 x 1200mm bales
F160A HD	16	2540mm	1600mm	2 x 800mm bales



Overview

The Albutt F301 Bale Grab is designed to handle round, wrapped bales of silage. The heavy duty design features smooth and large flat face contact points, ensuring the bale wrap is protected. The rollers are free to spin on forged steel tines featuring two plain bearings to ensure free rotation around the tine. The rollers are quickly and easily removed to expose two 1250mm forged steel tines. This means the handler can then be used as a bale spike for round and square straw bales. Each roller is secured with a bolted latch which can be mounted on either side of the handler arm.

Features

- Heavy duty design
- Twin rollers over forged steel tines (1250mm long)
- Rollers feature plain bearings to sure free rotations
- Simple latch for quick removal of rollers
- Handle round wrapped silage bales
- Handle round or square straw bales
- Large diameter heavy duty arm pivots
- Large smooth flat face to protect bale wrap
- Recommended to be used with Albutt's Bolt on Brackets system – see page 111

Models

Model	Open	Closed	Weight	Capacity
F301	1425mm	691mm	195kg	1200kg



Overview

The Albutt square bale handler features a new heavy duty design. Designed for use with telehandlers and tractor loaders the F352 handler will handle square wrapped bales of silage. The overhead clam arm has a two stage squeeze action. This clamp action minimizes the gap between bales required when stacking. Ideal for stacking bales on trailers, in buildings or yards. All contact points features a round tube design to protect bale film.

Features

- Handlers wrapped silage bales
- Adjustable from 1030mm open width to 540mm closed width.
- 4 position opening
- Over-head, unique two action squeeze
- Heavy duty design
- Suitable for Telehandlers, Tractor Loaders or Wheeled Loaders; Brackets optional
- Round edges to protect bale wrap
- High capacity hydraulic cylinder
- High grade pins
- Recommended to be used with Albutt's Bolt on Brackets system – see page 111

Models

Model	Open	Closed	Weight	Capacity
F352	1030mm	540mm	251kg	1200kg

F450



F470



F470 Contractor Bale Grab

- Handle square or round bales
- Handler wrapped silage or straw bales
- Opens from 700mm to 2450mm
- Lift capacity 2000kgs
- Weight 600kg
- Spill frame from second bale
- Contractor / heavy user design and build quality
- Fitted with lateral width adjustment taps
- Recommended to be used with Albutt's Bolt on Brackets system – see page 111

F450 Bale Grab

- Handle square or round bales
- Handle wrapped silage or straw bales
- Opens from 750mm to 2050mm
- Lift capacity 1000kg
- Weight 278kg
- Optional bolt on back frame allows 2 bales to be carried
- Compact width when closed allows access to restricted areas
- Recommended to be used with Albutt's Bolt on Brackets system – see page 111

Models

Model	Open	Closed	Weight	Capacity
F470	2450mm	700mm	600kg	2000kg
F450	2050mm	750mm	278kg	1000kg



Overview

The Albutt F410 soft hands bale stacker securely handles round wrapped silage bales. The attachment allows bales to be stacked in vertical columns with relative ease. Vertical column stacks provide greater stack stability, maintaining bale shape for easy feeding. Stacking on the thickest part of the wrap also minimises wrap damage and retains feed quality.

The heavy duty design of the F410 also means that the grab is as at home being used on Telehandlers as it is on Tractor Loaders

Features

- Handles wrapped round bales
- Stack round bales in columns
- Ideal for tight stacking
- Lift capacity 1000kg
- Spring system to retain arm position
- Suitable for Bales from 900mm to 1600mm
- High capacity hydraulic cylinder for secure grip
- Heavy duty frame and paddle design
- Recommended to be used with Albutt's Bolt on Bracket system – see page 111

Models

Model	Open	Closed	Weight	Capacity
F410	1600mm	900mm	180kg	1000kg



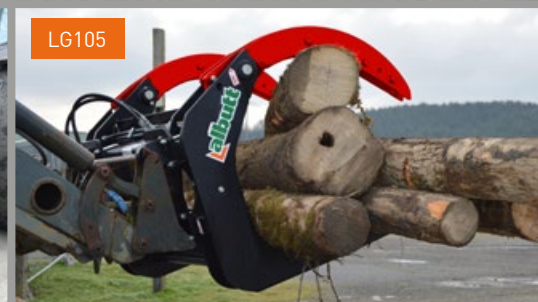
LG105



LG405



LG500



LG105

Overview

The Albutt Log Grab range has been specifically designed to suit the machine they are fitted onto, with individual models for Tractor Loaders, Telehandlers and Loading Shovels. Incorporating high strength materials such as Domex and Hardox in key stress areas, the range is built to last in a variety of forestry applications. All models come as standard with brackets to suit your machine. Used the world over, the Albutt Log Grab range is trusted time and again with repeat orders from across the globe. LG055, LG105 and LG405 models can be supplied with optional Hardox serrated edges which bolt onto the Log Grabs arms.

Features

- Twin, high capacity rams
- Hardox ultra hard wearing wear pads
- Hardox serrated edges - optional
- LG055, LG105, LG405 – twin arms for uneven loads
- LG500 beak design with Hardox tines – suitable for brash
- Recommended to be used with Albutt's Bolt on Bracket system – see page 111

Models

Model	Suitability	Width	Capacity	Weight
LG055	Loaders / Skidsteer	1280mm	2500kg	380kg
LG105	Telehandler	1290mm	3000kg	450kg
LG405	Loading Shovel	1400mm	3000kg	550kg
LG500	TH / Loading Shovel	1370mm	3500kg	670kg





Site Pro



SITE PRO/TIMBER GRAPPLE

Site Pro

- Official Hardox in my body ® product
- Unique design for hard raking, digging, site clearance etc.
- Hardox ultra hard wearing tines
- High capacity hydraulic cylinders
- Move trees, rocks, waste without picking up dirt

Models

Model	Width	Weight
WR5250HXG	5'0" / 1.52m	730kg
WR6260HXG	6'0" / 1.83m	840kg
WR7270HXG	7'0" / 2.13m	870kg
WR8280HXG	8'0" / 2.44m	1020kg

Timber Grapple

- Strenx high tensile steel grab
- 360 degree rotator
- Handles timber from 50mm to 700mm diameter
- Serrated blade on frame to steady load
- Recommended to be used with Albutt's Bolt on Bracket system – see page 111

Models

Model	Lift Capacity	Jaw Opening	Weight
LG700	2500kg	1450mm	295kg
LG800	4000kg	1890mm	330kg



Timber Grapple





Fixed Fork Carriages

Model	Max Capacity	Class / ITA
P150	1.50 tonne	2
P200	2.00 tonne	2
P250	2.50 tonne	2
P340	3.40 tonne	3
P450	4.50 tonne	3
P600	6.0 tonne	4

Fixed Fork Carriages – Supplied with 1220mm Long Pallet Forks

Model	Max Capacity	Class / ITA
P150PF	1.50 tonne	2
P200PF	2.00 tonne	2
P250PF	2.50 tonne	2
P340PF	3.40 tonne	3
P450PF	4.50 tonne	3
P600PF	6.0 tonne	4

ALL PALLET FORK TYPES SUPPLIED - CALL OUR
SALES OFFICES TO DISCUSS YOUR REQUIREMENTS

PALLET FORK CARRIAGES

Floating Fork Carriages

Model	Max Capacity	Bar Ø
G350JCB	3.50 tonne	50mm diameter
G400JCB	4.00 tonne	57mm diameter
G500JCB	5.00 tonne	57mm diameter

Floating Fork Carriages – Supplied with 1220mm Long Pallet Forks

Model	Max Capacity	Bar Ø
P151PF	1.5 tonne	44mm diameter
P251PF	2.50 tonne	44mm diameter
P351PF	3.50 tonne	50mm diameter
P451PF	4.50 tonne	57mm diameter
P601PF	6.0 tonne	60mm diameter

Merlo Fork Carriage – For Existing Merlo Forks

Model	Max Capacity	Weight
G400MERLO	4.0 tonne	95kg



18T version



Side Shift Carriage



Fork Positioners

- Accurate fork positioning, control position of pallet forks from the cab
- Available with or without pallet forks
- Excellent visibility, strength and versatility
- Spill Guard
- Nylon bushes
- Road transport fork retainers
- 4.50 to 18 tonne lift capacities

Side Shift Carriages

Model	Class / ITA	Width
SL41150	Class 2	1150mm
SL61150	Class 3	1150mm
SL71220	Class 4	1200mm

Merlo Headstock Conversions

- Merlo headstock is converted to pick up attachments of another bracket type
- I.E Headstock is converted to pick up Pin and Cone attachments
- Manual and Hydraulic locking options
- Designed to give best crowd and dump angles available
- Will derate the lift capacity of the telehandler

Replacement Headstocks

- Wide range of replacement carriages
- Alternative machine/attachment types available – I.E JCB 541-70 headstock to pick up Pin and Cone attachments
- Manual and Hydraulic locking options
- Designed and built for some of the industry's leading OEM's
- Talk to our Sales office to discuss your requirements





Carriage Mounted Jib

- Carriage mounted
- 6 mounting points
- Up to 4 tonne lift capacity
- Swivel hook
- Heavy duty construction
- Brackets included

Model	Max Capacity	Length	Weight
LJ4000	4000kgs	1860mm	183kg



Pallet Fork Hook – Fixed

- Fully tested and certified, supplied with test certificate
- Complete with swivel hook and shackle
- Positive fixings behind heel of fork
- Fixed hook position @ 900mm load centre

Model	Req. Capacity	Max Fork Size	Load Centre	COG	Weight
FMH900-2.0	2000kg	150 x 50mm	900mm	651mm	34kg
FMH900-3.0	3000kg	150 x 50mm	900mm	651mm	38kg
FMH900-5.0	5000kg	150 x 50mm	900mm	720mm	45kg

Pallet Fork Hook – Adjustable

- Adjustable lifting positions
- Fast and simple fitting
- Complete with swivel hook and shackle
- Clamps firmly anywhere along forks
- Fully tested, certified and complete with test certificate

Model	Max Fork Size	Fork Spread	Capacity	Weight
FMH-A2.0	140 x 50mm	676mm	2000kg	20kg
FMH-A3.0	140 x 50mm	676mm	3000kg	30kg
FMH-A4.0	150 x 60mm	720mm	4000kg	40kg
FMH-A5.0	150 x 60mm	720mm	5000kg	48kg

Pallet Fork Extensions

- Fully tested and certified
- Toes profiled and chamfered for ease of use
- Extensions held firmly in place with integral retaining bar
- Positive fix behind heel of fork

Model	Max Fork Size	Length	Weight
FEX100-1800HD	100 x 50mm	1800mm	53kg
FEX100-2000HD	100 x 50mm	2000mm	59kg
FEX125-1800HD	125 x 50mm	1800mm	67kg
FEX125-2000HD	125 x 50mm	2000mm	83kg



BS11



BS11



ES25



TS11



Tip Skips

- 4 way pallet fork entry
- Manual lever release
- Auto return to position when emptied
- Can be colour coded to suit various waste types

Model	Capacity	Width	Weight
TS11	1.13m ³	1070mm	228kg
TS13	1.30m ³	1200mm	254kg
TS17	1.75m ³	1570mm	280kg

Bucket Skips

- Ideal for use on building sites, stables and industrial sites.
- Quick release brackets to suit telehandlers or loaders.
- Heavy duty specification 6mm body
- Skip is emptied by tipping headstock of machine

Model	Capacity	Width	Weight
BS11	1.10m ³	1000mm	320kg
BS14	1.40m ³	1260mm	370kg

Equi-Skips

- Ideal for use on equestrian facilities
- Hold large volumes of straw or shaving muck
- Quick release brackets to suit telehandlers or loaders included.
- Heavy duty specification 6mm body

Model	Capacity	Width	Weight
ES25	2.50m ³	2058mm	520kg



M600GV



M400GV



Overview

The Albutt Man Platform range is manufactured to meet the requirements of HSE AIS28 guidelines and comes complete with a SWL test certificate (LOLER 1998). A sturdy high impact construction hosts all the features required by PM28 guidelines including weldmesh back guard, barriers and guards, integral harness rail, non slip floor with drain holes, kickboards and galvanised finish. A high back means the platform can be used on a variety of machines, from Telehandlers to masted Forklifts. All models come as standard with fittings to fit onto your machines pallet forks and bracket fixings can be added on some models.

Features

- Sturdy high impact construction
- Substantial high back guard
- Anti-trap handrail and high meshed back guard
- Positive fix to fork tines
- Bolt on Bracket option on M400 – see page 111
- Bolt on Brackets standard on M600
- Barriers, guards and toe boards to latest regulations
- Integral safety harness rail
- Non slip floor with drain holes
- Complies with HSE PM28 regulations
- Supplied with test and LOLER certificate
- Galvanised finish

Models

Model	Size	People	Weight	SWL
M400GV	1400 x 1100mm	2	212kg	500kg
M600GV	2440 x 1100mm	3	280kg	500kg

Part Number	Description
M2H	PPE / HSE Kit. Body harness, lanyard with hooks, safety helmet. All CE marked to EN397. Required for each platform operator.



WASTE WOOD CHIP BUCKET

Overview

The Albutt high capacity wood waste bucket is ideal for customers wanting to move large volumes of material such as wood chip. The heavy duty bucket features internal strengthening gussets, full length corner gussets and a high grade weldmesh spill guard. A boron 500 bolt on reversible toe plate is fitted as standard.

Features

- Strenx high tensile steel bucket shell
- 8mm body with 15mm side stiffeners and straps
- Full depth internet gussets
- Bolt on reversible toe plate
- Integral mesh spill guard
- Domed sides for optimal loading
- Suitable for handling large quantities of wood waste, woodchip or saw dust

Models

Model	Width	Capacity	Height	Depth	Weight
WA180-90WCB	9' / 2.74m	180 cu/ft / 5.15m ³	1700mm	1930mm	1600kg
WA141-90WCB	9' / 2.74m	141 cu/ft / 4.00m ³	1600mm	1621mm	1500kg
WA105-80WCB	8' / 2.45m	105 cu/ft / 2.97m ³	1423mm	1472mm	1200kg





WASTE KING FORK AND GRAB

Overview

The Albutt Waste King Fork & Grab offers unrivalled strength and durability in the Waste Attachment market. By incorporating high tensile materials such as Strenx and Hardox, the grab is renowned for it's heavy duty build quality. When performance is your deciding factor, a host of features make the Waste King the obvious option.

Features

- Strenx high tensile steel fork back
- Hardox tines
- Self-lubricating grab pivot bushes
- DX bushes in ram ends
- Full width base wear strip
- Large visibility slots in fork back
- Open grab dimension 1980mm
- Optional split grab for uneven loads

Models

Model	Width	Capacity	Height	Depth	Weight
WB676HXG	7'6" / 2.30m	92 cu/ft / 2.60m ³	1420mm	1240mm	1255kg
WB680HXG	8' / 2.44m	97 cu/ft / 2.75m ³	1420mm	1240mm	1325kg
WB690HXG	9' / 2.74m	110 cu/ft / 3.10m ³	1420mm	1240mm	1405kg





WASTE KING PUSH OFF FORK

Overview

The Albutt Waste King Fork with Push Off Gate is based on the same principle design as our ultra popular Push Off Buckrake range. The heavy duty design is based on a 200 x 100mm bottom tine holder with full width wear strip and 1650mm genuine Hardox tines. A solid gate is utilised with strategically placed cut outs to aid visibility.

Features

- 1650mm genuine Hardox base tines
- Side tines
- Flow divider valve helps to prevent gate twists on uneven loads
- For use with Telehandlers and Loading Shovels
- 200 x 100mm tine holder
- 60mm diameter main pivot pin
- Double profile gate mounting prevents arms bending
- 35mm diameter ram pivot pins
- 75mm ram bore size
- Suitable for a variety of industries and applications

Models

Model	Width	Capacity	Height	Tines	Weight
WB808PPHX	8' / 2.44m	160 cu/ft / 4.53m ³	1635mm	10	1280kg
WB809PPHX	9' / 2.74m	180 cu/ft / 5.09m ³	1635mm	11	1400kg
WB810PPHX	10' / 3.05m	200 cu/ft / 5.66m ³	1635mm	12	1500kg





WASTE KING COMPOSTING FORK

Overview

The Albutt Waste King Compost Fork is designed for use on green waste, compost and other types of loose waste. A high strength, solid back is manufactured from the high tensile steel Strenx which offers maximum strength at minimum weight. The fork features genuine Hardox tines at 1650mm long and a Hardox side tines either side. The length of the tines, side tines and fork back design provide maximum capacity for those wanting to handle large volumes. Hardox tines are also resistant to bending and offer long operating life.

Features

- Heavy duty design
- Strenx fork back; maximum strength, minimum weight
- 1650mm long genuine Hardox tines
- Brackets to suit your machine
- 200 x 100mm tine holder
- Wear strip to underside of fork tine holder
- Hardox side tine on each side
- Suitable for loading shovels and telehandlers
- Ideal for high intensity use in green waste sites
- Solid fork back protects headstock and hydraulics
- Cut outs in fork back for visibility

Models

Model	Width	Capacity	Height	Tines	Weight
WB708HX	8' / 2.44m	138 cu/ft / 3.90m ³	1040mm	10	1030kg
WB709HX	9' / 2.74m	155 cu/ft / 4.40m ³	1040mm	11	1120kg
WB710HX	10' / 3.05m	173 cu/ft / 4.89m ³	1040mm	12	1215kg





Overview

The Albutt Waste Bucket and Claw is designed to give a medium to heavy duty option for moving low density materials such as paper and cans. The grab is shallow compared to similar models, keeping material compact within the bucket itself. For further security, a mesh fill can be added between the grab tines.

Features

- Heavy duty waste bucket with claw
- Claw fits close to bucket sides to contain loose materials inside the bucket
- Ideal to handle low density materials, paper, cardboard, plastic and cans
- One piece claw with close spaced tines.
- Heavy duty bucket with 500 Brinell cutting edge
- Optional bolt on cutting edge
- Optional mesh fill to grab

Models

Model	Width	Capacity	Claw Tines	Weight
WA053-76BC	7'6" / 2.30m	53 cu/ft / 1.50m ³	8	800kg
WA073-76BC	7'6" / 2.30m	73 cu/ft / 2.07m ³	8	1020kg
WA078-80BC	8' / 2.44m	78 cu/ft / 2.21m ³	8	1090kg



WASTE BUCKET & POWER GRAB

Overview

The Albutt Waste Bucket and Grab is designed to provide a medium to heavy duty solution for waste handling. The high capacity rams are protected by bolt on covers with high grade pins used throughout. The grab pins and ram seals are also protected by the use of grab stops which prevent over extension of the grab. A heavy duty bucket features a rolled back and large corner gussets.

Features

- Grab pivots bushed with self-lubricating bushes
- Hydraulic rams bushed
- Hydraulic ram guards
- Rams and pins protected with grab stops
- Suitable for use with telehandlers
- Welded cutting edge 500 Brinell

Models

Model	Width	Capacity	Height	Depth	Weight
WA043-66BG	6'6" / 2.00m	43 cu/ft / 1.22m ³	786mm	1010mm	620kg
WA047-76BG	7'6" / 2.30m	47 cu/ft / 1.30m ³	786mm	1010mm	880kg
WA061-76BG	7'6" / 2.30m	61 cu/ft / 1.70m ³	910mm	1130mm	960kg
WA079-76BG	7'6" / 2.30m	79 cu/ft / 2.20m ³	950mm	1350mm	1000kg
WA082-80BG	8' / 2.44m	82 cu/ft / 2.35m ³	950mm	1350mm	1180kg



WASTE KING COMPACT BUCKET GRAB

Overview

The Albutt Waste King Compact Bucket Grab is built on the same principle heavy duty design as it's bigger counterpart but specifically for compact loadalls. For use in the high intensity applications of waste and recycling, the grab has a host of features which give a longer operating life compared to standard bucket grabs. In the Waste King name, the grab is built using high tensile steels Hardox and Strenx.

Features

- Strenx steel shell; maximum strength at minimum weight
- Hardox grab tines
- Split two piece grab; ideal for uneven loads
- Bolt on 1 piece cutting edge; HB500 Brinell
- Bolt in side plates
- 50mm grab pivots in pre lubricated bushes
- Ram pivots 35mm, ram ends bushed
- Armoured hydraulic hoses
- Integral spill guard
- Heavy duty design for long term reliability
- Rolled bucket back
- See through spill guards
- Wide opening grab

Models

Model	Width	Capacity	Height	Depth	Weight
WA027-60WG	6' / 1.83m	27 cu/ft / 0.76m ³	920mm	860mm	650kg





WASTE KING BUCKET GRAB

Overview

The Albutt Waste King Bucket Grab offers unrivalled strength and durability in the Waste Attachment market. By incorporating high tensile materials such as Strenx and Hardox, the grab is renowned for its heavy duty build quality. When performance is your deciding factor, a host of features make the Waste King the obvious option.

Features

- High tensile Strenx steel body
- Integral spill guard
- 50mm grab pivots with self lubricating bushes
- Hydraulic rams bushed
- Armoured hoses
- Hydraulic rams protected by bolt on ram guards
- 3 piece HB500 bolt on reversible toe plate
- Split two piece grab; ideal for uneven loads
- Hydraulic rams cushioned
- Genuine Hardox Grab tines
- Used and trusted by some of the Waste and Recycling industry's leading names
- Wear strips underneath the bucket

Models

Model	Width	Capacity	Height	Depth	Weight
WA052-76WG	7'6" / 2.30m	52 cu/ft / 1.50m ³	1070mm	1300mm	1050kg
WA062-80WG	8' / 2.44m	62 cu/ft / 1.75m ³	1070mm	1300mm	1150kg
WA072-76WG	7'6" / 2.30m	72 cu/ft / 2.00m ³	1250mm	1500mm	1190kg
WA082-80WG	8' / 2.44m	82 cu/ft / 2.30m ³	1250mm	1500mm	1250kg
WA089-88WG	8'8" / 2.64m	89 cu/ft / 2.51m ³	1250mm	1500mm	1410kg



WEIGHTS OF MATERIALS

Material	KG / Cum	% Fill
AGGREGATE (BRICK)	1820	100
ASHES	600	85
ASPHALT	1600	100
BEET PULP (NUTS)	600	85
BEET PULP (PRESSED)	900	110
BREWERS GRAINS	1110	85
BRICK AGGREGATE	1830	100
BRICKS (COMMON)	2,450 PER 1,000	
BRICKS (FACING)	2,700 PER 1,000	
CEMENT (NATURAL)	895	100
CEMENT (PORTLAND)	1440	100
CHALK	2200	100
CLAY (FIRE)	2080	100
CLAY (WET)	1880	110
COAL (ANTHRACITE)	896	100
COAL (BITUMINOUS)	1261	100
COAL (CANNEL)	1261	100
COAL (NEWCASTLE)	1261	100
COAL (WELSH)	1311	100
COKE (LOOSE)	597	85

COKE (PETROLEUM)	700	85
COPPER (CONCENTRATE)	2300	85
EARTH (DRY LOOSE)	1112	100
EARTH (WET PACKED)	1550	110
FERTILISER (MIXED)	1000	85
FERTILISER (NITRATE)	1250	85

THESE FIGURES ARE APPROXIMATE FOR USE AS A GUIDE TO MATERIAL DENSITY

WEIGHTS OF MATERIALS

Material	KG / Cum	% Fill
FLOUR	440	85
GLASS	2600	85
GRANITE CHIPPINGS	2655	85
GRAVEL (DRY)	1700	85
LIME (QUICK LOOSE)	850	100
LIMESTONE (CRUSHED)	1526	100
MANURE (FARMYARD)	900	85
MORTAR	1600	100
OATS	410	85
PEAT (DRY)	400	100
POTATOES	690	85
RUBBLE	1025	100
REFUSE (DRY)	398	100
SAND (DRY)	1550	100
SAND (WET)	1900	110
SAWDUST	250	110
SILAGE (ENSEILED)	730	110
SILAGE (GREEN)	340	110
SLATE	2723	100
SLURRY	1740	85

SNOW (FRESH)	141	110
SNOW (WET)	514	110
SODIUM CHLORIDE (DRY) [SALT]	1300	85
SUGAR BEET	54	100
TURNIPS	540	100
WHEAT	730	85

THESE FIGURES ARE APPROXIMATE FOR USE AS A GUIDE TO MATERIAL DENSITY

Measurement	Equates to
CUBIC FEET X 0.0283	CUBIC METRES
CUBIC FEET X 28.3	LITRE
CUBIC METRE ÷ 0.0283	CUBIC FEET
CUBIC METRE	1.31 CUBIC FEET
CUBIC METRE	35.32 CUBIC FEET
CUBIC METRE	1,000 LITRES
KILOGRAMME	2.2 POUNDS
METRIC TONNE	0.984 TONS IMPERIAL
25.4 MM	1 INCH
4.5461 LITRES	1 GALLON

TERMS

All quotations and orders accepted by Albutt are subject to our terms and conditions of business. An excerpt is shown below, a full copy is available from our sales office on request.

ORDERS

Orders must be forwarded in writing, by fax or email. No responsibility is accepted by Albutt for goods supplied incorrectly if a written order is not received.

PRICES

All previous price lists are cancelled. All prices quoted in this brochure include delivery to our dealer's premises on the UK mainland. Deliveries to locations including: Scottish Highland – Grampian regions and destinations outside the UK mainland, will attract an additional delivery charge. Prices are exclusive of VAT and are recommended retail prices. All equipment is supplied at the price ruling at the date of despatch. Unless otherwise stated all prices are inclusive of brackets.

PAYMENT

Invoices are to be settled in full by the 30th day of the month following the date of invoice.

SPECIFICATIONS

All capacities, sizes and weights in this brochure are approximate. Albutt reserve the right to alter specifications without notice or consultation. Provisions & Use of Work Equipment regulations (1998) specify it is the responsibility of the purchaser to ensure that the requirements of these regulations are met when purchasing Albutt products for their specific requirements.

DELIVERY

Albutt accept no liability for any delay in delivery or the consequences of any such delay.

RETURNS

Albutt regret that no goods can be returned without authorisation and any such returns will be subject to a handling charge.

TITLE

All goods shall remain the property of Albutt until the Customer has paid in full the whole of the contract price.

While the goods remain in the ownership of Albutt, the Customer shall keep them and insure them against damage, destruction or theft for their full value and return them to Albutt on demand. Any proceeds of an insurance claim in this connection shall belong to Albutt for whom the Customer shall hold the same in trust. The Customer is expressly prohibited from creating any mortgage, charge lien or other encumbrance adverse to the title of Albutt.

GUARANTEE

All new equipment is warranted for a period of twelve months from date of delivery. Our guarantee does not apply to any parts which are not of our make, these parts will be subject to the supplier's warranty. Albutt shall not be liable in any circumstances for any loss, injury or expense, whether direct or indirect, which may arise for any reason whatsoever in connection with any goods supplied or work done by Albutt.

WARRANTY

Rectification work should not be actioned without authorisation from Albutt. Our warranty may require equipment to be returned to the manufacturer – Albutt.

A price must be agreed and an order number issued before proceeding.

- A copy of our full terms and conditions of sale is available from our sales office.

Pages 8

Model	RRP (£)
A197-96GB	£6 787
A171-96GB	£6 243
A190-90GB	£6 572
A162-90GB	£5 590
A141-90GB	£4 280
A129-90GB	£3 968
A179-86GB	£4 981
A152-86GB	£4 671
A133-86GB	£3 824
A120-86GB	£3 389
A112-86GB	£3 304
A100-86GB	£3 123
A144-80GB	£5 209
A125-80GB	£3 940
A115-80GB	£3 690
A105-80GB	£3 432
A095-80GB	£2 985
A075-80GB	£2 270
A135-76GB	£3 976
A095-76GB	£3 185
A089-76GB	£3 140
A070-76GB	£2 169

Pages 9-10

Model	RRP (£)
A075-80	£2 270
A063-80	£2 148
A056-80	£1 884
A043-80	£1 664
A032-80	£1 606
A070-76	£2 169
A060-76	£2 056
A053-76	£1 816
A040-76	£1 638
A030-76	£1 556
A066-70	£2 139
A056-70	£2 018
A049-70	£1 757
A044-70	£1 640
A037-70	£1 582
A028-70	£1 567
A042-66	£1 534
A035-66	£1 506
A026-66	£1 448
A038-60	£1 520
A032-60	£1 488
A024-60	£1 432

Pages 10-11

Model	RRP (£)
A026-50	£1 400
A018-47	£1 322
A016-40	£1 304
A197-96HD	£7 388
A171-96HD	£6 791
A190-90HD	£7 123
A162-90HD	£6 141
A141-90HD	£4 831
A129-90HD	£4 519
A063-90HD	£3 961
A179-86HD	£5 532
A152-86HD	£5 222
A133-86HD	£4 375
A120-86HD	£3 940
A112-86HD	£3 855
A100-86HD	£3 805
A060-86HD	£3 752



Pages 12-13

Model	RRP (£)
A144-80HD	£5 730
A125-80HD	£4 491
A115-80HD	£4 241
A105-80HD	£3 983
A095-80HD	£3 536
A075-80HD	£2 821
A063-80HD	£2 620
A056-80HD	£2 453
A043-80HD	£2 305
A032-80HD	£2 295
A070-76HD	£2 480
A060-76HD	£2 421
A053-76HD	£2 051
A040-76HD	£1 911
A066-70HD	£2 150
A056-70HD	£2 104
A049-70HD	£1 980
A044-70HD	£1 944
A037-70HD	£1 857
A130-90HT	£13 124
A104-90HT	£9 125
A123-86HT	£11 967

Pages 13-16

Model	RRP (£)
A098-86HT	£8 969
A116-80HT	£11 058
A092-80HT	£8 570
A070-76HT	£8 194
A050-76HT	£7 292
A042-70HT	£6 873
A035-70HT	£6 543
A025-66HT	£5 988
WA130-90HTBL	£14 097
WA104-90HTBL	£9 937
WA123-86HTBL	£12 784
WA098-86HTBL	£9 764
WA116-80HTBL	£11 986
WA092-80HTBL	£9 372
WA070-76HTBL	£8 996
WA050-76HTBL	£8 012
WA042-70HTBL	£7 764
WA035-70HTBL	£7 552
WA025-66HTBL	£6 985
A085-80BGHX	£5 440
A059-80BGHX	£4 778
A081-76BGHX	£5 312

RETAIL PRICES

ALBUTT DEALERS

For 2022, please call our sales office for current prices prior to placing orders.

Pages 16-24

Model	RRP (£)
A055-76BGHX	£4 945
A051-70BGHX	£4 895
A048-66BGHX	£4 784
A043-60BGHX	£4 752
A028-80CS	£4 350
A026-76CS	£4 097
A020-72CS	£3 986
A018-66CS	£3 904
A015-57CS	£3 737
A011-53CS	£2 826
A009-411CS	£2 786
A089-80CS-BL	£7 734
A070-76CS-BL	£7 459
A035-60TLT	£1 909
A025-50TLT	£1 770
A021-43TLT	£1 629
A038-51BGBL	£3 738
A028-50HT	£3 618
BF500**	£2 950
BF600**	£3 486
BF1000**	£4 020

Pages 26-36

Model	RRP (£)
SB40	£2 125
SB60	£2 125
SB80	£2 125
SB100	£2 125
V7-1800	£1 800
V7-2400	£2 040
B808PPHX	£7 629
B809PPHX	£7 757
B810PPHX	£8 070
B812PPHX	£9 153
B808PP	£6 609
B809PP	£6 689
B810PP	£6 937
B912HX	£10 021
B914HX	£10 269
B916HX	£10 544
B708HX	£4 089
B709HX	£4 263
B710HX	£4 477
B908HXF	£4 565
B909HXF	£4 876
B910HXF	£5 798

Pages 36-42

Model	RRP (£)
B912HXF	£5 972
B566HX	£2 692
B570HX	£2 715
B576HX	£2 816
B580HX	£3 004
B590HX	£3 212
B466	£2 350
B470	£2 371
B476	£2 460
B480	£2 567
C366HX	£2 288
C370HX	£2 309
C376HX	£2 367
C366	£2 086
C370	£2 126
C376	£2 149
E324HX	£1 104
E340HX	£1 115
E360HX	£1 230
E380HX	£1 264
E400HX	£1 285
E410HX	£1 309

Pages 42-46

Model	RRP (£)
E324	£1 092
E340	£1 104
E360	£1 217
E380	£1 253
E400	£1 274
E410	£1 297
B666HXG	£5 238
B670HXG	£5 263
B676HXG	£5 386
B680HXG	£5 714
B690HXG	£6 397
C560HXG	£3 929
C566HXG	£4 000
C570HXG	£4 130
C576HXG	£4 142
C580HXG	£4 239
C560	£3 812
C566	£3 858
C570	£3 969
C576	£4 049
C580	£4 158

Pages 48-52

Model	RRP (£)
E324HXG	£2 476
E340HXG	£2 492
E360HXG	£2 552
E380HXG	£2 760
E400HXG	£2 914
E410HXG	£3 069
E324G	£2 464
E340G	£2 485
E360G	£2 525
E380G	£2 694
E400G	£2 964
E410G	£3 009
S130**	£2 829
S160**	£3 178
S190**	£4 298
S220**	£4 697
S160HX**	£3 257
S190HX**	£4 404
S220HX**	£4 954
SKM190HX**	£8 032
SKM220HX**	£8 313
SKM250HX**	£8 821

Pages 52-62

Model	RRP (£)
SK220HX**	£10 002
SK250HX**	£10 260
SB190HX**	£6 446
SB220HX**	£6 654
SKMB190HX**	£9 293
SKMB220HX**	£9 676
SKMB250HX**	£10 089
SKB220HX**	£11 398
SKB250HX**	£11 795
BL1 - 1000	£1 182
BL2 - 1000	£1 242
BL4 - 600	£1 322
BL4 - 1000	£1 765
BL4H - 1000	£3 826
H101**	£2 632
H121**	£2 712
H141**	£2 768
YS30GV**	£2 696
YS50GV**	£2 761
SP53**	£2 949
SP70**	£3 086
SP70H**	£3 318

Pages 62-72

Model	RRP (£)
SP84**	£3 156
SP84H**	£3 385
SP92**	£3 242
SP92H**	£3 465
ES100 Euro	£517
CS100 Pin Cone	£774
CS100 JCB Q Fit	£742
CS100 Manitou	£761
CS100 Merlo	£742
F100**	£436
F110**	£501
F131**	£1 004
F131FT**	£1 790
F125**	£1 571
F501**	£2 832
F650K/HX**	£5 290
F140A**	£3 273
F150A**	£4 818
F155A**	£5 188
F160A**	£4 452
F301**	£1 545
F352**	£1 539

Pages 74-81

Model	RRP (£)
F450**	£1 990
F470**	£5 160
F410**	£1 550
LG055**	£2 924
LG105**	£3 005
LG405**	£4 426
LG500	£4 426
WR5250HXG	£5 368
WR6260HXG	£5 727
WR7270HXG	£6 064
WR8280HXG	£6 345
LG700	£5 524
LG800	£7 988
P150	£921
P200	£942
P250	£1 061
P340	£1 108
P450	£1 296
P600	£1 844
P150PF	£1 240
P200PF	£1 291
P250PF	£1 361

Pages 81-88

Model	RRP (£)
P340PF	£1 378
P450PF	£1 608
P600PF	£2 677
G350JCB	£1 027
G400JCB	£1 069
G500JCB	£1 092
P151PF	£1 374
P251PF	£1 427
P351PF	£1 541
P451PF	£1 574
P601PF	£1 969
G400MERLO	£505
LJ4000	£2 279
FMH 900 2.0	£882
FMH 900 3.0	£995
FMH 900 5.0	£1 064
FMH A2.0	£679
FMH A3.0	£769
FMH A4.0	£865
FMH A5.0	£977
TS11	£1 350
TS13	£1 410

Pages 88-100

Model	RRP (£)
TS17	£1 538
BS11	£1 705
BS14	£1 815
ES25	£3 015
M400GV	£1 666
M600GV	£2 253
WA180-90HD	£5 798
WB676HXG	£7 321
WB680HXG	£7 526
WB690HXG	£7 759
WB808PPHX	£8 204
WB809PPHX	£8 414
WB810PPHX	£8 616
WB708HX	£5 622
WB709HX	£5 785
WB710HX	£5 962
WA053-76BC	£4 601
WA073-76BC	£4 809
WA078-80BC	£5 023

RETAIL PRICES & BOLT ON BRACKETS

Pages 102-106

Model	RRP (£)
WA043-66BG	£5 768
WA047-76BG	£5 890
WA061-76BG	£6 435
WA079-76BG	£7 198
WA082-80BG	£7 316
WA027-60WG	£5 985
WA052-76WG	£7 704
WA062-80WG	£7 998
WA072-76WG	£8 104
WA082-80WG	£8 212
WA089-88WG	£8 365

Bolt on Brackets

For some attachments we recommend the Albutt Bolt on Brackets system. This will ensure the attachment has the correct working angles, strength and design for maximum usability and performance.

Albutt Bolt On Brackets £400.00 RRP

Excluding Merlo, JCB Volvo & JCB Teletruk £520.00 RRP



** plus bolt on brackets



FOR TODAY, AND TOMORROW



