

INSTRUCTION MANUAL AND PARTS CATALOGUE FOR

THE ALBUTT RANGE OF FORK AND GRABS

**THIS MUST BE USED IN CONJUNCTION WITH ALBUTT'S
GENERAL OPERATOR'S MANUAL**

CONTENTS

Certificate.....	3
Safety Instructions.....	4-7
Maintenance.....	8
Machine Specifications.....	9
Fitting & Operating Instructions.....	10
Parts Lists.....	11
Warning Stickers.....	17



EU CERTIFICATE OF CONFORMITY

CONFORMING TO EC Machinery Directive 2006/42 EC

We:

Albutt Limited
Great Washbourne
Tewkesbury
Glos. UK
GL20 7AR



declare in sole responsibility, that the product

Type: FORK AND GRABS; E Series, C Series, B Series, WB Series

to which this certificate applies, conforms to the basic safety
and health requirements of the EC Machinery Directive 2006/42 EC, and the

Transposed Harmonised Standards:

BS EN 1553 (2000)

A handwritten signature in black ink, appearing to read "A. D. Albutt".

Alistair Albutt

Managing Director

SAFETY INSTRUCTIONS

IMPORTANT – READ BEFORE USE

This manual is provided to assist you in getting the best results from your machine and ensure that you do so safely. If you have any queries about the use of the machine contact your dealer before use. Please keep this manual for future reference.

1.1 FUNDAMENTAL PRECAUTIONS

On delivery, your dealer gave you an explanation of the operation and maintenance of this Albutt Fork & Grab. Please read and understand these operating instructions before operating the machine for the first time. It is essential that you observe all safety instructions.

Incorrect use or mishandling of the machine can endanger:
Life and Limb of the operator, other persons or animals within the vicinity of the machine.
The machine and other material assets of the owner or third persons.
The performance of the machine.

Anyone who is involved in the commissioning, operation or maintenance of the Fork & Grab must read and understand these instructions very carefully and observe them at all times.

NEVER DISTRACT ANYONE WHO IS USING A MACHINE.

1.2 AUTHORISED OPERATORS

Youths under the age of 16 must not operate this implement. The owner of the machine must provide the operator with the operating instructions and make sure they have read and understood them. Only then may the machine be put into operation.

The owner must ensure that only authorised persons operate/work on this machine. He is responsible for keeping any third persons or animals out of the working area of the machine.

THE OPERATOR MUST BE FULLY TRAINED BEFORE USING THE IMPLEMENT.

A SAFE DISTANCE OF AT LEAST 10M MUST BE OBSERVED BY ANYONE WITHIN THE VICINITY OF THE FORK & GRAB

1.3 HYDRAULIC SAFETY

CAUTION The hydraulic system is under high pressure.

Ensure that only high-pressure hoses are used to connect supply to the Fork & Grab. Check hoses regularly and renew any that are damaged or worn. Hydraulic supply should not exceed 250 Bar and 80 L/min

Before working on the hydraulics release the pressure from the system and stop the tractor engine.

Make sure that the hydraulic hoses are coupled correctly. Pressure should be released from the system both on the tractor and on the implement side prior to coupling the hoses to the tractor hydraulics.

CAUTION Hydraulic oil forced out under pressure can break the skin and cause severe injury. In the event of a hydraulic oil leak stop the tractor flow immediately. **DO NOT PUT HANDS NEAR A LEAKING PIPE.**



1.4 GENERAL SAFETY AND ACCIDENT PREVENTION REGULATIONS

Ensure the implement is correctly and securely attached to the operating vehicle.

NEVER attach to a tractor which would be rendered unstable when the implement is operated at its full capacity. Take note of the maximum load permissible on linkage arms.

Take extra care when operating machinery on sloping ground. **NEVER** operate on ground where there is a risk of the tractor becoming unstable.

When detaching the implement from the tractor always ensure that it is stable and safely positioned on a level surface.

The attaching and detaching of the implement to a tractor must be carried out by only one operator. There should not be any other people in the vicinity of the implement or in the tractor.

Before operation make yourself familiar with all elements and controls of the machine as well as their functions.

Before operation inspect the area around you. Keep children away. All visitors and unauthorised persons should be kept well away from work area.

Under NO circumstances should anyone, authorised or otherwise attempt to use the Fork & Grab as a means of personal transport. It is designed as specialist purpose farm implement and is unsuitable for the safe transportation of passengers. **NEVER** allow anyone especially children to travel anywhere between the tractor and an implement.

ENSURE the implement does not restrict the forward vision or important sightlines of the operator if mounted on the front of the tractor.

ENSURE that the operator is aware of the overhang when the implement is mounted on the front of the tractor. **EXTREME CAUTION** must be taken when emerging onto the public roads.

NEVER attempt to move this implement manually.

To ensure stability the Fork & Grab should be stored in a safe position, supported to prevent it being knocked over.

If the implement is to be transported on a trailer then it should be securely attached using suitable restraints.

Before operation inspect the area around you. Keep children away. All visitors and unauthorised persons should be kept well away from work area at all times.

Under NO circumstances should anyone, authorised or otherwise attempt to use the Buckrake as a means of personal transport. It is designed as a specialist purpose farm implement and is unsuitable for the safe transportation of passengers. **NEVER** allow anyone especially children to travel anywhere between the tractor and an implement.

NEVER use this implement to lift items other than loose manure. Any attempt to overload the machine will risk life and limb of the operator and immediately invalidate warranty.

To avoid personal injury keep hands and limbs well away from the moving parts.

ENSURE the implement and silage, do not restrict the forward vision or important sightlines of the operator when mounted on the front of the tractor.

ENSURE that the operator is aware of the large overhang when the implement is mounted on the front of the tractor.

Always keep the Fork & Grab and load as low as possible to maximise stability.

NEVER attempt to move the implement manually.



1.5 MAINTENANCE

Stop the tractor engine and disconnect hydraulic hoses from Fork & Grab prior to carrying out maintenance, servicing, cleaning or repair work. **ALWAYS** remove the ignition key.

The manufacturer will not be responsible for any damages or injuries caused by unauthorised repair, alterations or mishandling of the product.

Maintain product with care. Check periodically for damage that would affect the safe operation of the implement.

ALWAYS ensure all warning stickers are kept clean and in good condition.

Regularly check all bolts and tines and tighten if necessary.

Lubricate the hydraulic cylinder and pivot pin daily before use.

Only use clean grease complying to Din51502

Clean all grease nipples and the nozzle of the grease gun before lubrication.



1.6 MACHINE SPECIFICATIONS

WB Series - Hardox Tines					
Model	Width	Capacity	Grab Tines	Base Tines	Weight
WB676HXG	7'6"	2.60m3	7	9	1255kg
WB680HXG	8'	2.75m3	7	10	1325kg
WB690HXG	9'	3.10m3	8	11	1405kg
B Series - Hardox Tines					
Model	Width	Capacity	Grab Tines	Base Tines	Weight
B666HXG	6'6"	2.30m3	5	8	820kg
B670HXG	7'	2.42m3	6	8	870kg
B676HXG	7'6"	2.60m3	6	9	910kg
B680HXG	8'	2.76m3	6	10	960kg
B690HXG	9'	3.10m3	7	11	1050kg
C Series - Add HX for Hardox Tines					
Model	Width	Capacity	Grab Tines	Base Tines	Weight
C560	6'	1.24m3	5	8	510kg
C566	6'6"	1.30m3	5	9	540kg
C570	7'	1.41m3	6	9	57-kg
C576	7'6"	1.56m3	6	10	600kg
C580	8'	1.70m3	7	11	630kg
E Series - Add HX for Hardox Tines					
Model	Width	Capacity	Grab Tines	Base Tines	Weight
E324G	4'1"	0.62m3	4	7	260kg
E340G	4'7"	0.70m3	4	7	290kg
E360G	5'3"	0.80m3	5	8	330kg
E380G	5'11"	0.90m3	5	9	360kg
E400G	6'7"	1.00m3	6	10	375kg
E410G	7'	1.07m3	6	10	385kg



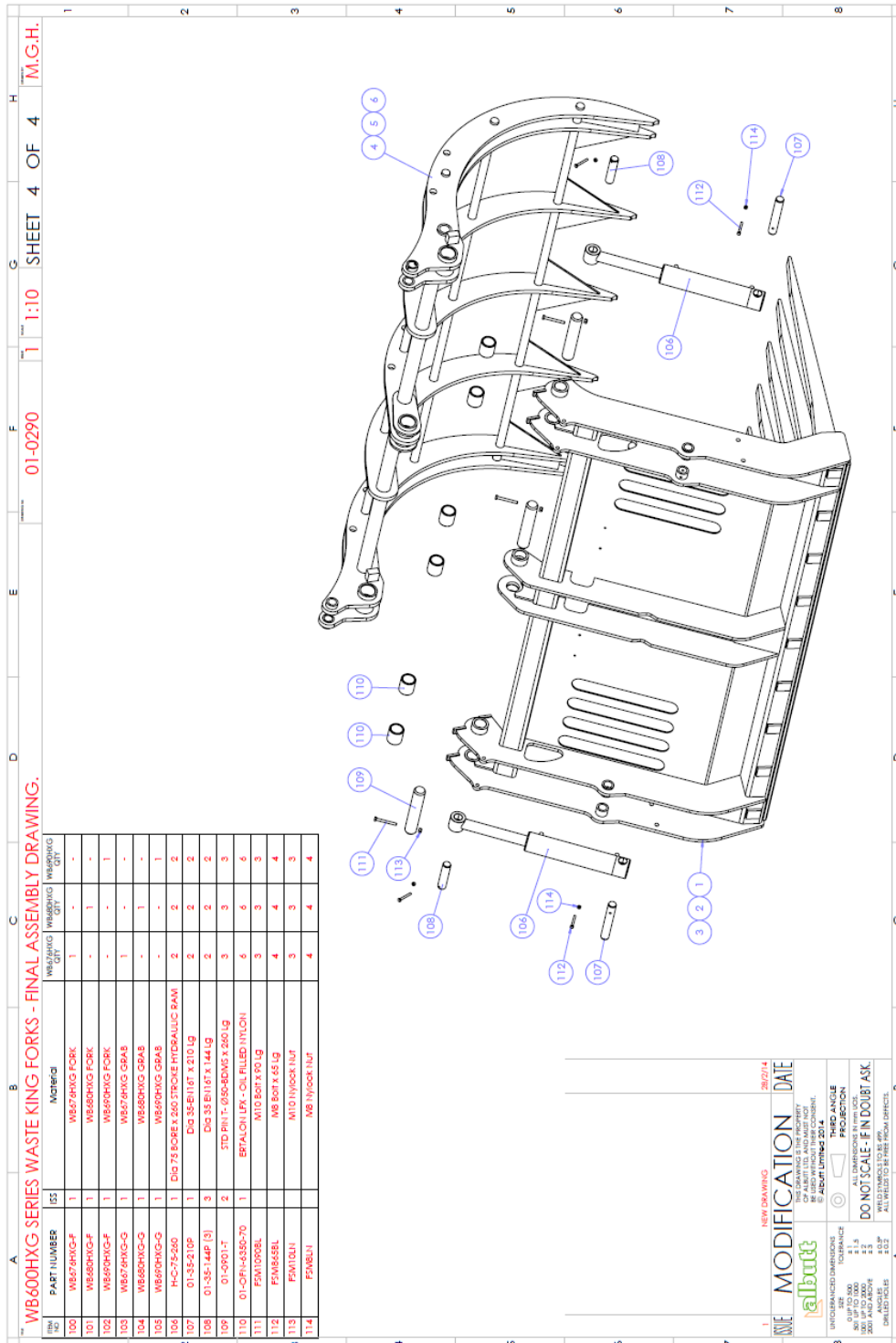
1.7 GENERAL OPERATING INSTRUCTIONS

For all Albutt Fork and Grabs:

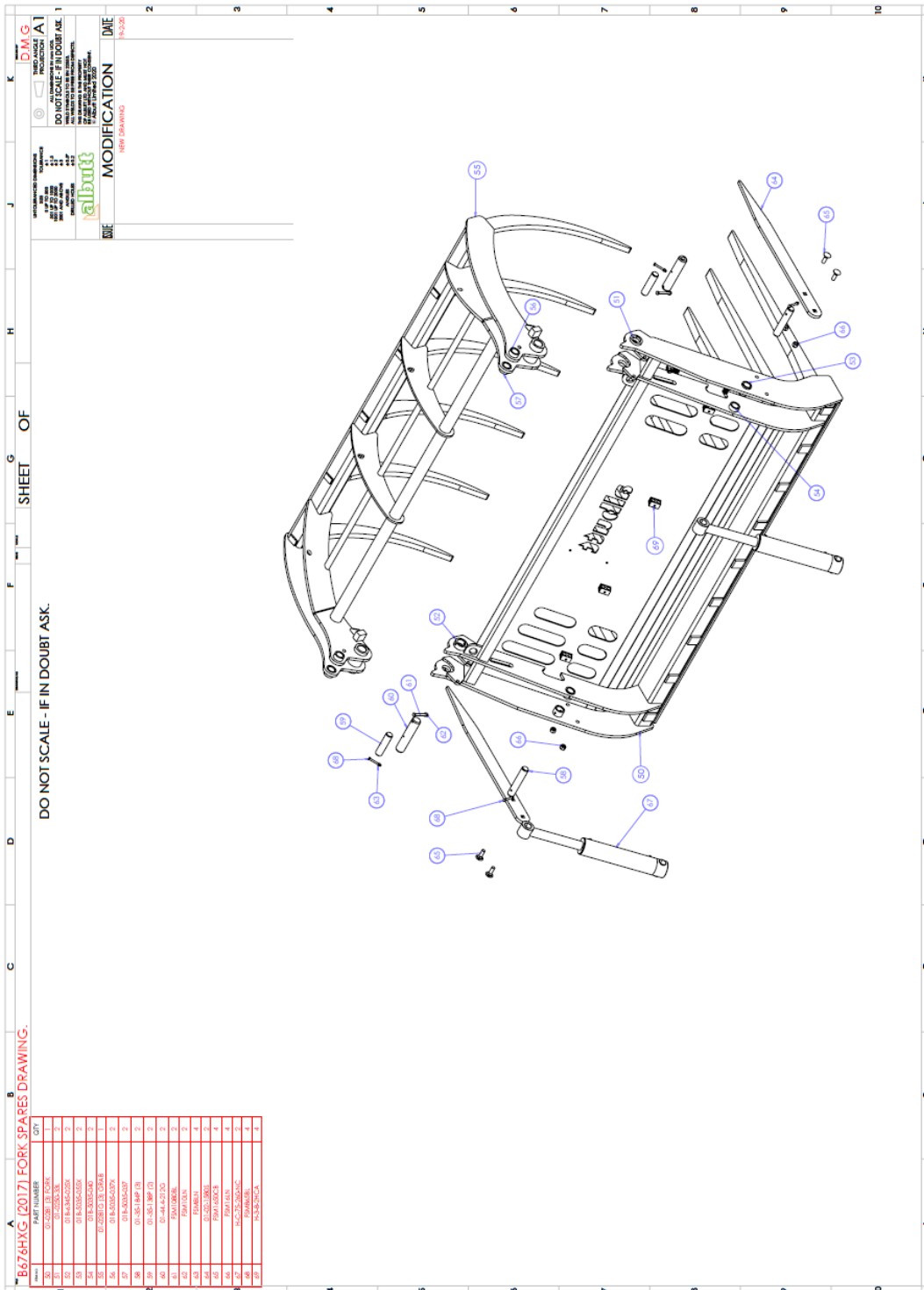
1. Lower the Fork and Grab to the ground so the base wear strip is resting flat on the floor
2. Open the grab fully
3. Drive slowly forward into the pile of material you wish to handle
4. When the Fork and Grab is fully into the pile, close the grab completely. Take care not to overload the Fork and Grab
5. Crowd the Fork and Grab back and raise the boom slightly
6. Reverse away from the material, ensuring the area is safe to do so
7. Take the material to the pile or trailer you wish to load in into
8. Stop beforehand, leaving enough space to raise the boom and boom out if required
9. Apply the hand brake and put the machine into neutral
10. Raise the boom to the required level to load and boom out if required
11. Dump the headstock forward then open the grab
12. Allow the material to freely fall from the forks tines to its required place
13. Gently shake the fork by moving the joystick from left to right if material is stuck to the fork tines
14. Close the grab, crowd the fork back, boom back and lower the boom as required



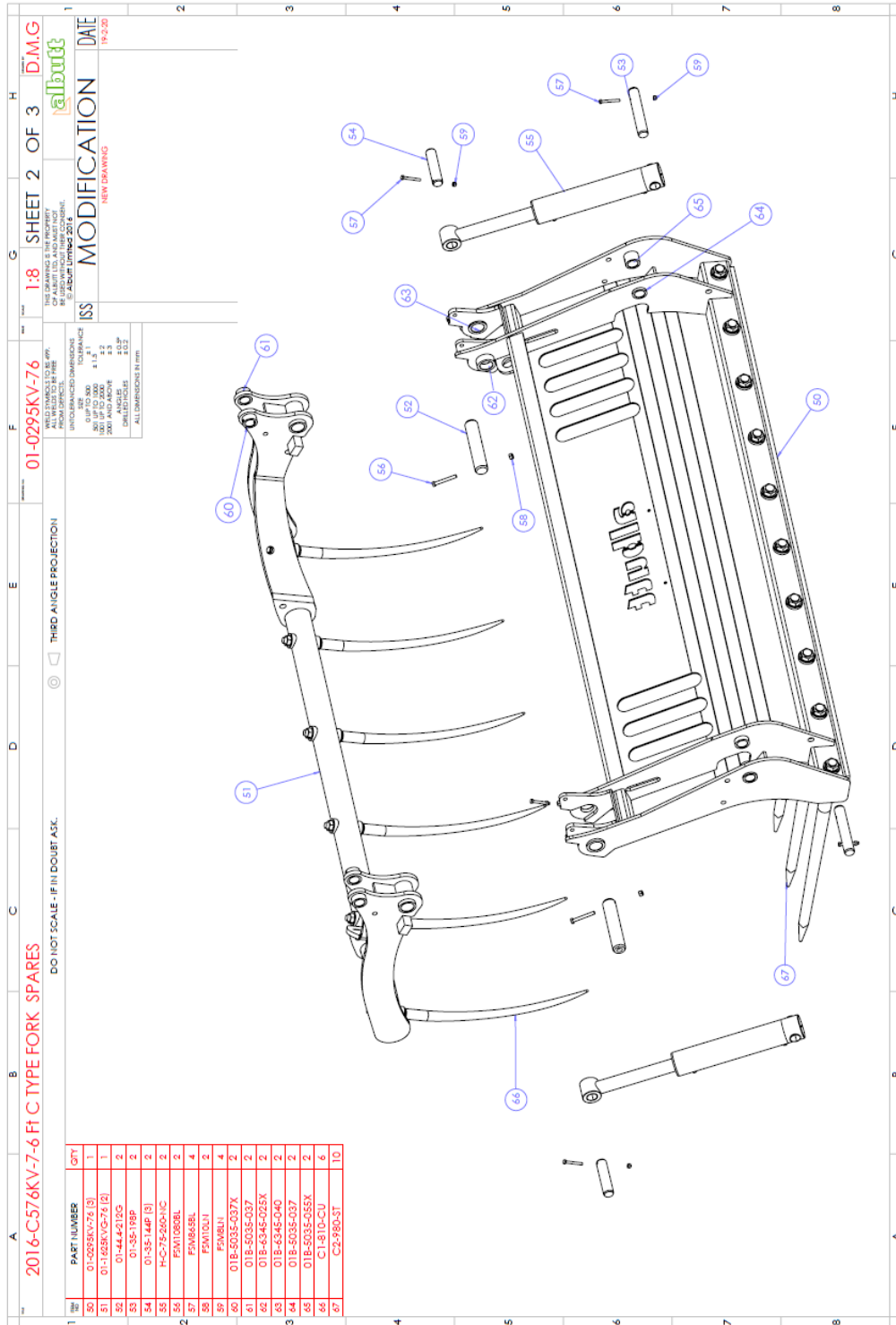
2.0 WB Series Parts Drawing



2.1 B Series Parts Drawing



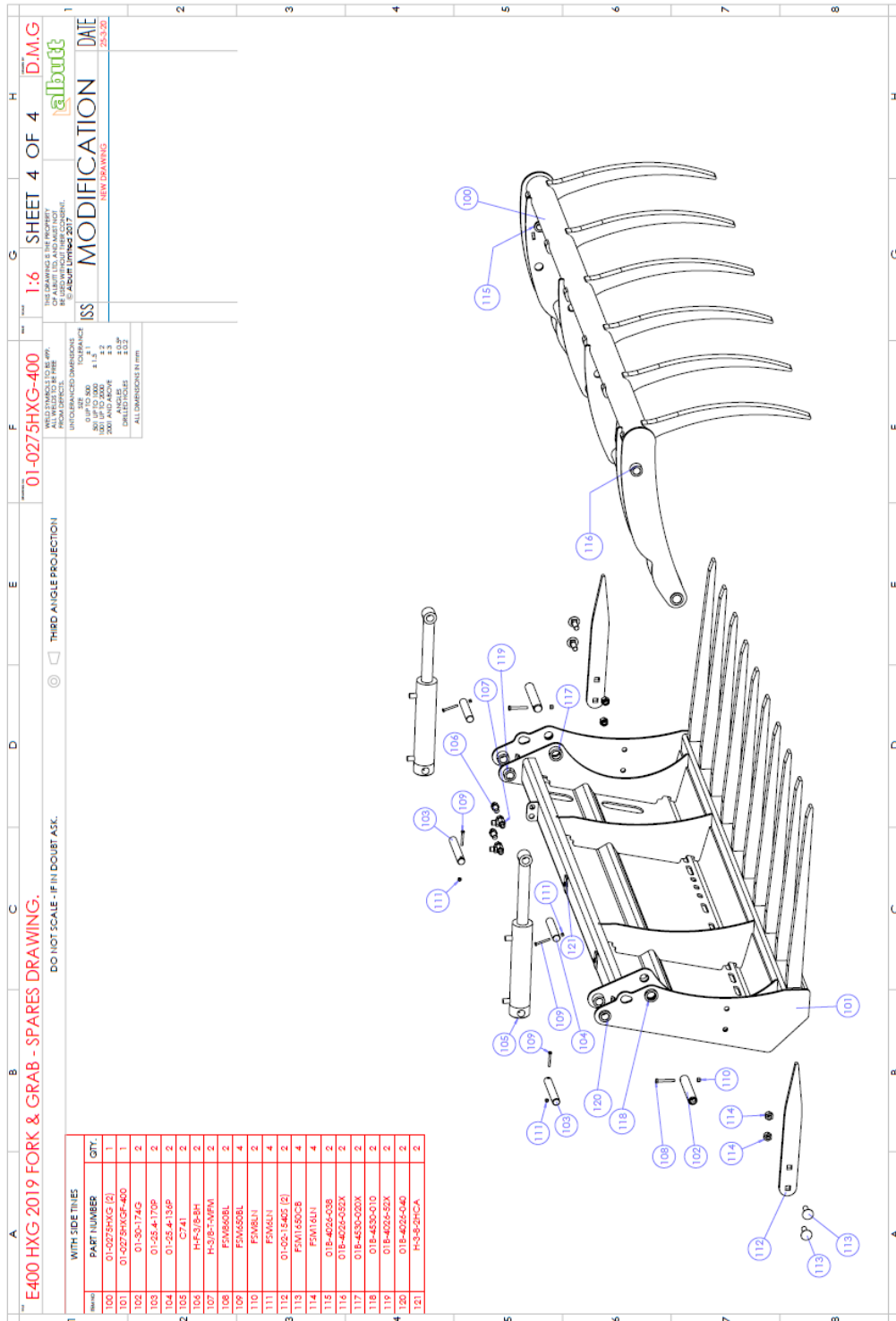
2.2 C Series (KV) Parts Drawing



2.4 E Series (KV) Parts Drawing

[illegible]

2.5 E Series (HX) Parts Drawing



2.6 Warning Stickers

