

INSTRUCTION MANUAL AND PARTS CATALOGUE FOR

THE ALBUTT RANGE OF FOLDING FORKS

**THIS MUST BE USED IN CONJUNCTION WITH ALBUTT'S
GENERAL OPERATOR'S MANUAL**

CONTENTS

Certificate.....	3
Safety Instructions.....	4-7
Maintenance.....	8
Machine Specifications.....	9
Fitting & Operating Instructions.....	10
Parts Lists.....	11
Warning Stickers.....	12



EU CERTIFICATE OF CONFORMITY

CONFORMING TO EC Machinery Directive 2006/42 EC

We:

Albutt Limited
Great Washbourne
Tewkesbury
Glos. UK
GL20 7AR



declare in sole responsibility, that the product

Type: FOLDING FORKS B912HX, B914HX, B916HX

to which this certificate applies, conforms to the basic safety
and health requirements of the EC Machinery Directive 2006/42 EC,
and the Transposed Harmonised Standards:

BS EN 1553 (2000)

A handwritten signature in black ink, appearing to read "A. D. Albutt".

Alistair Albutt

Managing Director

SAFETY INSTRUCTIONS

IMPORTANT – READ BEFORE USE

This manual is provided to assist you in getting the best results from your machine and ensure that you do so safely. If you have any queries about the use of the machine contact your dealer before use. Please keep this manual for future reference.

1.1 FUNDAMENTAL PRECAUTIONS

On delivery, your dealer gave you an explanation of the operation and maintenance of this Albutt Folding Fork. Please read and understand these operating instructions before operating the machine for the first time. It is essential that you observe all safety instructions.

Incorrect use or mishandling of the machine can endanger:
Life and Limb of the operator, other persons or animals within the vicinity of the machine.
The machine and other material assets of the owner or third persons.
The performance of the machine.

Anyone who is involved in the commissioning, operation or maintenance of the Folding Fork must read and understand these instructions very carefully and observe them at all times.

NEVER DISTRACT ANYONE WHO IS USING A MACHINE.

1.2 AUTHORISED OPERATORS

Youths under the age of 16 must not operate this implement. The owner of the machine must provide the operator with the operating instructions and make sure they have read and understood them. Only then may the machine be put into operation.

The owner must ensure that only authorised persons operate/work on this machine. He is responsible for keeping any third persons or animals out of the working area of the machine.

THE OPERATOR MUST BE FULLY TRAINED BEFORE USING THE IMPLEMENT.

A SAFE DISTANCE OF AT LEAST 10M MUST BE OBSERVED BY ANYONE WITHIN THE VICINITY OF THE FOLDING FORK.

1.3 HYDRAULIC SAFETY

CAUTION The hydraulic system is under high pressure.

Ensure that only high-pressure hoses are used to connect supply to the Folding Fork. Check hoses regularly and renew any that are damaged or worn. Hydraulic supply should not exceed 250 Bar and 80 L/min

Before working on the hydraulics release the pressure from the system and stop the tractor engine.

Make sure that the hydraulic hoses are coupled correctly. Pressure should be released from the system both on the tractor and on the implement side prior to coupling the hoses to the tractor hydraulics.

CAUTION Hydraulic oil forced out under pressure can break the skin and cause severe injury. In the event of a hydraulic oil leak stop the tractor flow immediately. **DO NOT PUT HANDS NEAR A LEAKING PIPE.**



1.4 GENERAL SAFETY AND ACCIDENT PREVENTION REGULATIONS

Ensure the implement is correctly and securely attached to the operating vehicle.

NEVER attach to a tractor which would be rendered unstable when the implement is operated at its full capacity. Take note of the maximum load permissible on linkage arms.

Take extra care when operating machinery on sloping ground. **NEVER** operate on ground where there is a risk of the tractor becoming unstable.

When detaching the implement from the tractor always ensure that it is stable and safely positioned on a level surface.

The attaching and detaching of the implement to a tractor must be carried out by only one operator. There should not be any other people in the vicinity of the implement or in the tractor.

Before operation make yourself familiar with all elements and controls of the machine as well as their functions.

Before operation inspect the area around you. Keep children away. All visitors and unauthorised persons should be kept well away from work area.

Under NO circumstances should anyone, authorised or otherwise attempt to use the Folding Fork as a means of personal transport. It is designed as specialist purpose farm implement and is unsuitable for the safe transportation of passengers. **NEVER** allow anyone especially children to travel anywhere between the tractor and an implement.

ENSURE the implement does not restrict the forward vision or important sightlines of the operator if mounted on the front of the tractor.

ENSURE that the operator is aware of the overhang when the implement is mounted on the front of the tractor. **EXTREME CAUTION** must be taken when emerging onto the public roads.

NEVER attempt to move this implement manually.

To ensure stability the Folding Fork should be stored in a safe position, supported to prevent it being knocked over.

If the implement is to be transported on a trailer then it should be securely attached using suitable restraints.

Before operation inspect the area around you. Keep children away. All visitors and unauthorised persons should be kept well away from work area at all times.

Under NO circumstances should anyone, authorised or otherwise attempt to use the Buckrake as a means of personal transport. It is designed as a specialist purpose farm implement and is unsuitable for the safe transportation of passengers. **NEVER** allow anyone especially children to travel anywhere between the tractor and an implement.

NEVER use this implement to lift items other than loose material into a silage clamp or pit. Any attempt to overload the machine will risk life and limb of the operator and immediately invalidate warranty.

To avoid personal injury keep hands and limbs well away from the moving parts.

ENSURE the implement and silage, do not restrict the forward vision or important sightlines of the operator when mounted on the front of the tractor.

ENSURE that the operator is aware of the large overhang when the implement is mounted on the front of the tractor.

Always keep the Folding Fork and load as low as possible to maximise stability. When operating on the clamp keep the surface as level as possible to avoid lumps and soft spots which may lead to rollover.

NEVER attempt to move the implement manually.



1.5 MAINTENANCE

Stop the tractor engine and disconnect hydraulic hoses from Folding Fork prior to carrying out maintenance, servicing, cleaning or repair work. **ALWAYS** remove the ignition key.

The manufacturer will not be responsible for any damages or injuries caused by unauthorised repair, alterations or mishandling of the product.

Maintain product with care. Check periodically for damage that would affect the safe operation of the implement.

ALWAYS ensure all warning stickers are kept clean and in good condition.

Regularly check all bolts and tighten if necessary.

Lubricate the hydraulic cylinder and pivot pin daily before use.

Only use clean grease complying to Din51502

Clean all grease nipples and the nozzle of the grease gun before lubrication.



1.6 MACHINE SPECIFICATIONS

Fork	Tines	Open Width (ft/m)	Tine Length (mm)	Capacity (m3)	Weight (Kg)	Height (mm)	Side Tines (mm)
Hardox Tines							
B912HX	14	12' / 3.70m	1650 mm	6.90m3	1500kg	1530 mm	1250 / 1400
B914HX	16	14' / 4.27m	1650 mm	8.00m3	1650kg	1530 mm	1250 / 1400
B916HX	18	16' / 4.88m	1650 mm	9.30m3	1780kg	1530 mm	1250 / 1400



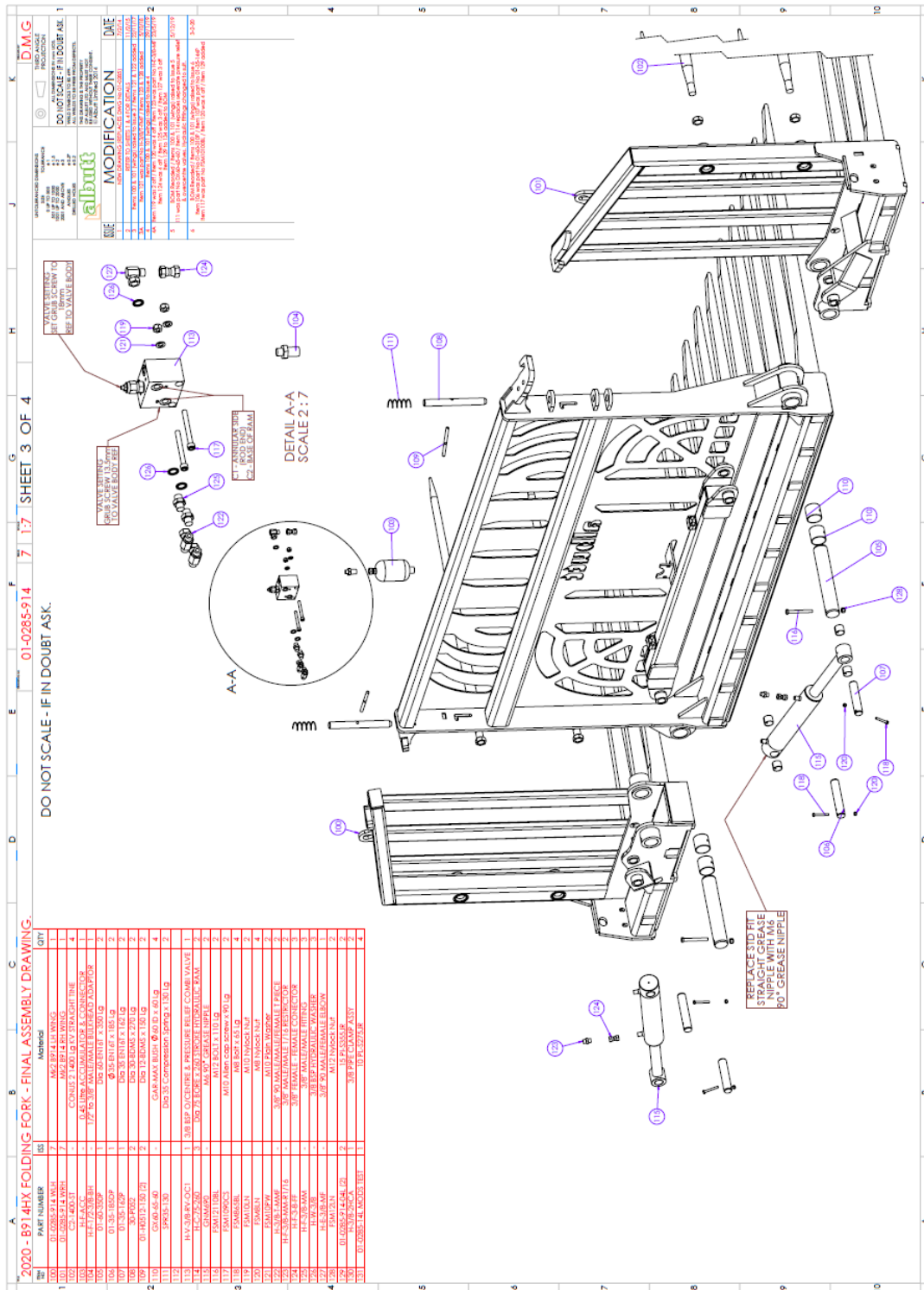
1.7 GENERAL OPERATING INSTRUCTIONS

For all Albutt Folding Forks:

- 1) Ensure the wings are fully open
- 2) Approach the silage and lower the Folding Fork to the floor just before reaching the silage
- 3) Lift the load of silage on the fork.
- 4) Carry the silage up the pit and unload over a large area by dumping the machine's headstock forward whilst moving
- 5) Roll this silage down before dropping more grass over the top. This will produce higher quality silage but will also ensure a firmer and more consistent silage pit for safer operation
- 6) When clearing up the floor, ensure the Folding Fork is fully level with the ground, ensuring even wear across the tines and wear strip across the floor of the fork.



2.0 B914HX Parts Drawings



2.2 Warning Stickers

