

**INSTRUCTION MANUAL
AND
PARTS CATALOGUE
FOR**

**ALBUTT CONTRACTOR BALE
CLAMP
F470**

**THIS MUST BE USED IN CONJUNCTION WITH ALBUTT'S
GENERAL OPERATOR'S MANUAL**

CONTENTS

Certificate.....3
Safety Instructions.....4-7
Parts Lists.....8



EU CERTIFICATE OF CONFORMITY

CONFORMING TO EC Machinery Directive 2006/42 EC

We:

Albutt Limited
Great Washbourne
Tewkesbury
Glos. UK
GL20 7AR



declare in sole responsibility, that the product

Type: Contractor bale clamp F470

to which this certificate applies, conforms to the basic safety
and health requirements of the EC Machinery Directive 2006/42 EC,
and the Transposed Harmonised Standards:

BS EN 1553 (2000)

A handwritten signature in black ink, appearing to read "A. D. Albutt".

Alistair Albutt

Managing Director

SAFETY INSTRUCTIONS

IMPORTANT – READ BEFORE USE

This manual is provided to assist you in getting the best results from your machine and ensure that you do so safely. If you have any queries about the use of the machine contact your dealer before use. Please keep this manual for future reference.

1.1 FUNDAMENTAL PRECAUTIONS

On delivery, your dealer gave you an explanation of the operation and maintenance of this Albutt timber grapple. Please read and understand these operating instructions before operating the machine for the first time. It is essential that you observe all safety instructions.

Incorrect use or mishandling of the machine can endanger:
Life and Limb of the operator, other persons or animals within the vicinity of the machine.
The machine and other material assets of the owner or third persons.
The performance of the machine.

Anyone who is involved in the commissioning, operation or maintenance of the timber grapple must read and understand these instructions very carefully and observe them at all times.

NEVER DISTRACT ANYONE WHO IS USING A MACHINE.

1.2 AUTHORISED OPERATORS

Youths under the age of 16 must not operate this implement. The owner of the machine must provide the operator with the operating instructions and make sure they have read and understood them. Only then may the machine be put into operation.

The owner must ensure that only authorised persons operate/work on this machine. He is responsible for keeping any third persons or animals out of the working area of the machine.

**THE OPERATOR MUST BE FULLY TRAINED BEFORE USING THE IMPLEMENT.
A SAFE DISTANCE OF AT LEAST 10M MUST BE OBSERVED BY ANYONE WITHIN THE VICINITY OF THE BALE CLAMP.**

**We recommend that genuine Albutt bolt on brackets are used on these attachments.
Any weld on brackets which adversely affect the structure of the product and may invalidate warranty.**

1.3 HYDRAULIC SAFETY

CAUTION The hydraulic system is under high pressure.

Ensure that only high-pressure hoses are used to connect supply to the timber grapple. Check hoses regularly and renew any that are damaged or worn. Hydraulic supply should not exceed 140 Bar and 80 L/min

Before working on the hydraulics release the pressure from the system and stop the tractor engine.

Make sure that the hydraulic hoses are coupled correctly. Pressure should be released from the system both on the tractor and on the implement side prior to coupling the hoses to the tractor hydraulics.

CAUTION Hydraulic oil forced out under pressure can break the skin and cause severe injury. In the event of a hydraulic oil leak stop the tractor flow immediately. **DO NOT PUT HANDS NEAR A LEAKING PIPE.**



1.4 GENERAL SAFETY AND ACCIDENT PREVENTION REGULATIONS

Ensure the implement is correctly and securely attached to the operating vehicle.

NEVER attach to a tractor which would be rendered unstable when the implement is operated at its full capacity. Take note of the maximum load permissible on linkage arms.

Take extra care when operating machinery on sloping ground. **NEVER** operate on ground where there is a risk of the tractor becoming unstable.

When detaching the implement from the tractor always ensure that it is stable and safely positioned on a level surface.

The attaching and detaching of the implement to a tractor must be carried out by only one operator. There should not be any other people in the vicinity of the implement or in the tractor.

Before operation make yourself familiar with all elements and controls of the machine as well as their functions.

Before operation inspect the area around you. Keep children away. All visitors and unauthorised persons should be kept well away from work area.

Under NO circumstances should anyone, authorised or otherwise attempt to use the timber grapple as a means of personal transport. It is designed as specialist purpose farm implement and is unsuitable for the safe transportation of passengers. **NEVER** allow anyone especially children to travel anywhere between the tractor and an implement.

ENSURE the implement does not restrict the forward vision or important sightlines of the operator if mounted on the front of the tractor.

ENSURE that the operator is aware of the overhang when the implement is mounted on the front of the tractor. **EXTREME CAUTION** must be taken when emerging onto the public roads.

NEVER attempt to move this implement manually.

To ensure stability the timber grapple should be stored in a safe position, supported to prevent it being knocked over.

If the implement is to be transported on a trailer then it should be securely attached using suitable restraints.

1.5 MAINTENANCE

Stop the tractor engine and disconnect hydraulic hoses from timber grapple prior to carrying out maintenance, servicing, cleaning or repair work. **ALWAYS** remove the ignition key.

The manufacturer will not be responsible for any damages or injuries caused by unauthorised repair, alterations or mishandling of the product.

Maintain product with care. Check periodically for damage that would affect the safe operation of the implement.

ALWAYS ensure all warning stickers are kept clean and in good condition.

Regularly check all bolts and tighten if necessary.

Lubricate the hydraulic cylinder and pivot pin daily before use.

Only use clean grease complying to Din51502

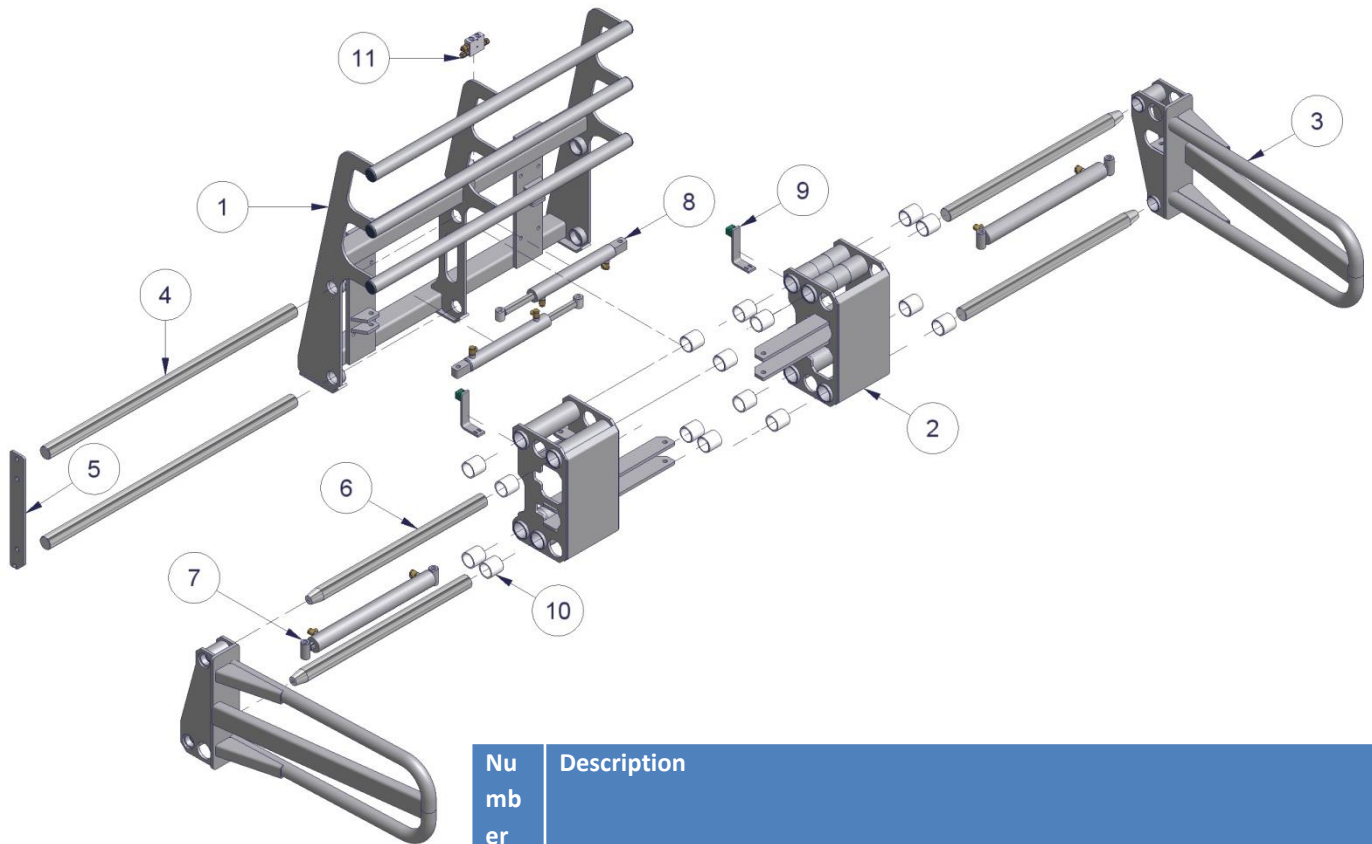
Clean all grease nipples and the nozzle of the grease gun before lubrication.

SPARE PARTS F470

1	BKP-UF1 main frame
2	Bearing section
3	BKP-UF1 clamp
4	Main frame guide shaft
5	Main frame guide shaft locking plate
6	Clamp arm guide shaft
7	Clamping cylinder DW 60-35-550
8	Adjusting cylinder DW 50-30-330
9	Guide strip
10	Plastic bushes
11	Electro/hydraulic switching valve

1.6 F470

Where the lifting vehicle is not equipped with two double action connections, an electro/hydraulic switching valve or two 3-way valves can be used to operate the width setting cylinders.



Number	Description
1	BKP-UFI main frame
2	Bearing section
3	BKP-UFI clamp
4	Main frame guide shaft
5	Main frame guide shaft locking plate
6	Clamp arm guide shaft
7	Clamping cylinder DW 60-35-550
8	Adjusting cylinder DW 50-30-330
9	Guide strip
10	Plastic bushes
11	Electro/hydraulic switching valve

1.7 Lateral adjustment of F470

The F470 has been fitted with lateral adjustment for the largest possible range while keeping the frame width to a minimum. The adjustment works as follows:

The two clamping sections, connected by the chrome-plated shafts of the clamping arms, can move back and forth.

This moving back and forth over two chrome-plated shafts is initiated by opening both frame-mounted three-way valves. The oil will flow to the section cylinders allowing the adjustment of the clamping sections in any position as required.

Make sure the space between the clamping arms when the clamp is closed is always at least 30cm smaller than the width of the bale to be clamped.

When satisfied with the right adjustment, return the two three-way valves back into the 'clamping position' in order to control the clamping cylinders.

For the distribution of power in the clamp, the clamping sections must be as wide as possible apart, i.e. the clamping sections must be in the widest possible position if the bales are more than 160cm wide.

Type	BKP-UFI
Max. carrying capacity	1500 kg
Weight ¹	600 kg
Max. working pressure	14Mpa (140bar)
Frontal extension length	340 mm
Clamp capacity	720 – 2480 mm
Min. machine width	1500 mm
Bale type	Round/Rectangular

F470 is now ready for use.