

# **INSTRUCTION MANUAL AND PARTS CATALOGUE FOR**

## **THE ALBUTT RANGE OF SNOW PLOUGHS**

**THIS MUST BE USED IN CONJUNCTION WITH ALBUTT'S  
GENERAL OPERATOR'S MANUAL**

# CONTENTS

Certificate.....	3
Safety Instructions.....	4-9
Parts Diagrams.....	10-



**EU CERTIFICATE OF CONFORMITY**

CONFORMING TO EC Machinery Directive 98/37 EC

**We:**

Albutt Limited  
Great Washbourne  
Tewkesbury  
Glos. UK  
GL20 7AR



declare in sole responsibility, that the product

**Type: Snow Plough**

to which this certificate applies, conforms to the basic safety  
and health requirements of the EC Machinery Directive 98/37 EC,  
and the Transposed Harmonised Standards:

BS EN 1553 (2000)

A handwritten signature in black ink, appearing to read "A. D. Albutt".

Alistair Albutt

**Managing Director**

# SAFETY INSTRUCTIONS

**IMPORTANT – READ BEFORE USE**

This manual is provided to assist you in getting the best results from your machine and ensure that you do so safely. If you have any queries about the use of the machine contact your dealer before use. Please keep this manual for future reference.

## **1.1 FUNDAMENTAL PRECAUTIONS**

On delivery, your dealer gave you an explanation of the operation and maintenance of this Albutt attachment. Please read and understand these operating instructions before operating the attachment for the first time. It is essential that you observe all safety instructions. Incorrect use or mishandling of the machine can endanger:

Life and Limb of the operator, other persons or animals within the vicinity of the machine.

The machine and other material assets of the owner or third persons.

The performance of the machine.

Anyone who is involved in the commissioning, operation or maintenance of the snow plough must read and understand these instructions very carefully and observe them at all times.

**NEVER DISTRACT ANYONE WHO IS USING A MACHINE.**

## **1.2 AUTHORISED OPERATORS**

Youths under the age of 16 must not operate this attachment. The owner of the snow plough must provide the operator with the operating instructions and make sure they have read and understood them. Only then may the attachment be put into operation.

The owner must ensure that only authorised persons operate/work on this attachment. The owner is responsible for keeping any third persons or animals out of the working area of the machine.

**THE OPERATOR MUST BE FULLY TRAINED BEFORE USING THE ATTACHMENT IN CONJUNCTION WITH A TRACTOR LOADER OR TELEHANDLER  
A SAFE DISTANCE OF AT LEAST 10M MUST BE OBSERVED BY ANYONE WITHIN THE VICINITY OF THE ATTACHMENT.**

**We recommend that genuine Albutt bolt on brackets are used on these attachments. Any weld on brackets which adversely affect the structure of the product and may invalidate warranty.**

### 1.3 GENERAL SAFETY AND ACCIDENT PREVENTION REGULATIONS

Ensure the implement is correctly and securely attached to the operating vehicle using loader bracket mounting points. These are supplied with the attachment.

Always use the correct mounting bracket and ensure that it is fitted by a trained and competent operator who has been approved by your Albutt dealer. It is recommended to use a bolted connection to attach the mounting bracket.

**NEVER** attach to a machine which would be rendered unstable when the implement is operated at its full capacity. Take note of the maximum load permissible on loader or linkage arms. Unloaded weight of the implement is 330kg to 450kg, depending on model. Refer to I/D plate on snow plough for exact weight.

Take extra care when operating machinery on sloping ground. **NEVER** operate on ground where there is a risk of the machine becoming unstable.

When the unit is stationary always ensure it is lowered to the ground.

When detaching the implement from the tractor always ensure that it is stable and safely positioned on a level surface.

The attaching and detaching of the implement to a tractor must be carried out by only one operator. There should not be any other people in the vicinity of the implement or in the tractor.

Before operation make yourself familiar with all elements and controls of the machine as well as their functions.

Before operation inspect the area around you. Keep children away. All visitors and unauthorised persons should be kept well away from work area.

**Under NO circumstances** should anyone, authorised or otherwise attempt to use the snow plough as a means of personal transport. It is designed as a special purpose attachment and is unsuitable for the safe transportation of passengers. **NEVER** allow anyone especially children to travel anywhere between the tractor and an attachment.

**NEVER** use this attachment for any task other than clearing snow. This machine is designed to clear snow from roads and tracks. Any attempt to overload the machine will risk life and limb of the operator and immediately invalidate warranty.

To avoid personal injury keep hands and limbs well away from the moving parts.

**ENSURE** the implement does not restrict the forward vision or important sightlines of the operator when mounted on the machine.

**ENSURE** that the operator is aware of the large overhang when the implement is mounted on the front of the machine. **EXTREME CAUTION** must be taken when emerging onto the public roads.

**NEVER** attempt to move this implement manually.

#### **1.4 GENERAL OPERATING INSTRUCTIONS**

If the attachment is to be transported on a trailer then it should be securely attached using suitable restraints.

The snow plough is supplied with either hydraulic or manual angle control. Both modes of angle control can only be operated when the snow plough is stationary. **Under no circumstances should the snow plough blade angle be adjusted when the attachment is in operation.**

**Manual angle control.** The snow plough can be angled through an angle of 15 degrees to the left or right hand side. The 'Tee' headed pin is removed, blade moved to required position, 'Tee' pin replaced and secured. There are a 5 hole positions. See picture below.

**The centre pivot pin must be set vertical both front to back and side to side to ensure blade remains level at all angles.**



## 1.5 HYDRAULIC SAFETY

**CAUTION** The hydraulic system is under high pressure.

Ensure that only high-pressure hoses are used to connect supply to the attachments hydraulic cylinder. Check hoses regularly and renew any that are damaged or worn. Hydraulic supply should not exceed 250 Bar and 80 L/min

Before working on the hydraulics lower the snow plough, release the pressure from the system and stop the tractor engine.

When connecting hydraulic rams make sure that the hydraulic hoses are coupled correctly. Pressure should be released from the system both on the tractor and on the implement side prior to coupling the hoses to the tractor hydraulics.

**CAUTION** Hydraulic oil forced out under pressure can break the skin and cause severe injury. In the event of a hydraulic oil leak stop the tractor flow immediately.

**DO NOT PUT HANDS NEAR A LEAKING PIPE.**

## 1.6 MAINTENANCE

As a rule, disengage the driving system and stop the engine prior to carrying out maintenance, servicing, cleaning or repair work. **ALWAYS** remove the ignition key.

Prop the machine with appropriate supports before carrying out any maintenance work.

The manufacturer will not be responsible for any damages or injuries caused by unauthorised repair, alterations or mishandling of the product.

Maintain product with care. Check periodically for damage that would affect the safe operation of the implement.

**ALWAYS** ensure all warning stickers are kept clean and in good condition.

Regularly check the bolts at the hinge points and tighten if necessary.

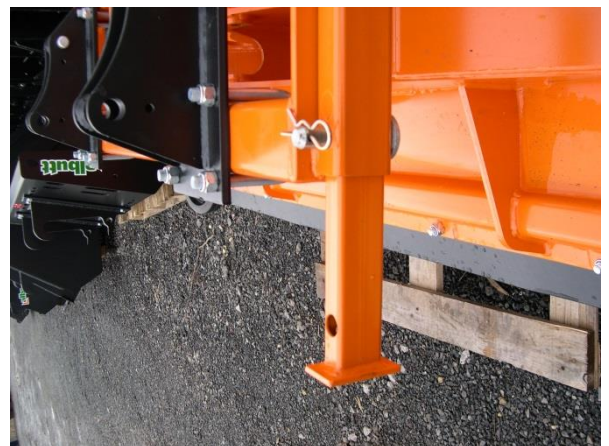
Regularly lubricate the hydraulic cylinder and hinges using clean grease.

Cover the chromed area of the hydraulic cylinder with a layer of grease during prolonged periods of inactivity.

**Hydraulic angle control.** The snow plough can be angled through 15 degrees to the left and right hand sides. The hydraulic ram is actuated from the 3<sup>rd</sup> service of the telehandler. **The snow plough must be stationary when the angle is adjusted.**



**Parking legs.** The snow plough is equipped with two parking legs. The parking leg should be in the retracted position when operating the snow plough. The parking leg can be extended and secured before detaching the snow plough from the telehandler. This allows the snow plough to be parked ready for use and simple reconnection.



**Blade height adjustment.** The height of the snow plough blade can be controlled using the two castor legs. The snow plough blade is fitted with a rubber wear-strip, the wear-strip is used to protect the road surface. The blade height should be set with a minimum gap of 25mm between the underside of the blade and the underside of the castor wheel. This distance can be increased to give added protection to the road surface. Adjustment of the castor wheel height is made by removing the locking pin, setting the castor wheel height, replacing the locking pin and securing.

**Maximum operating speed is 16 kph or 10 mph**

### **Operation**

- When used with 3 point linkage ensure linkage is in 'Float' operation
- When used with tractor loader use loader in 'Float' operation
- Do not place downward pressure on the caster wheels.

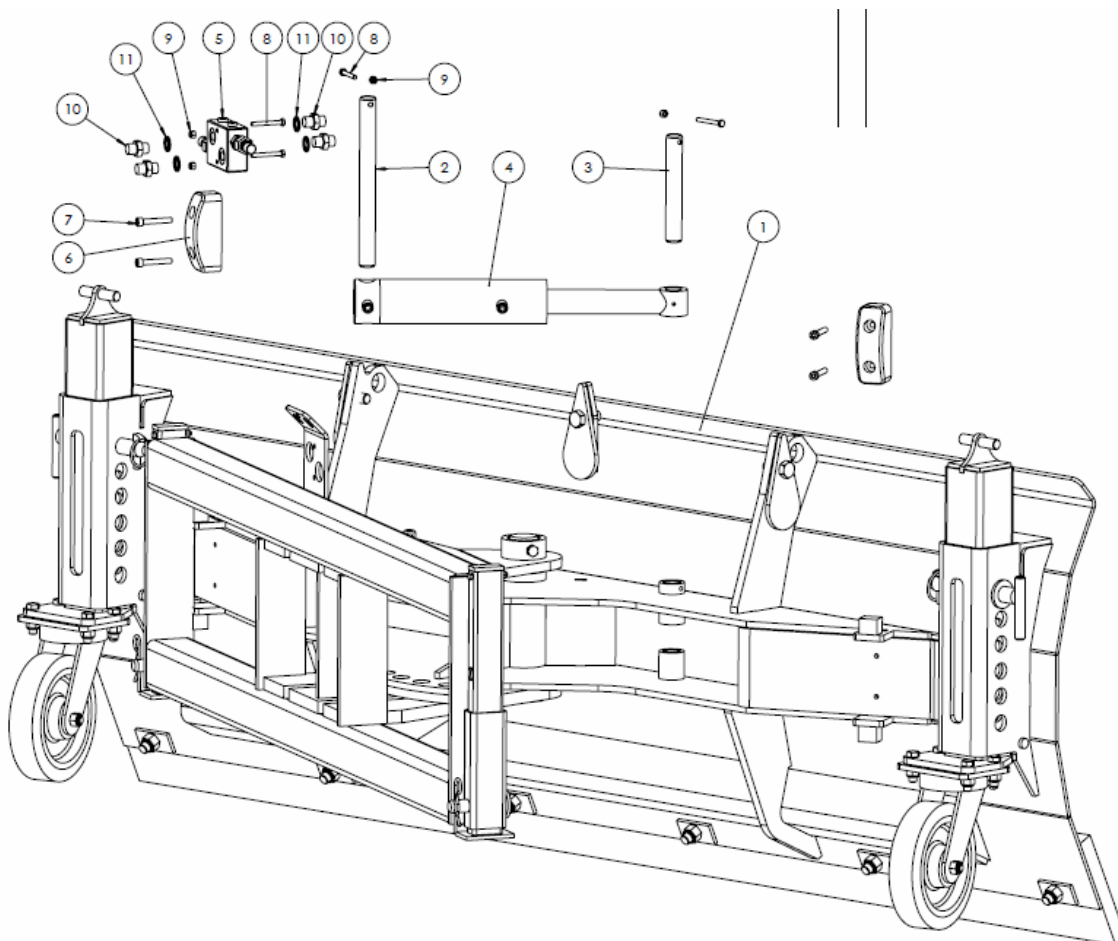
**Always Lift Snow Plough Before Reversing**

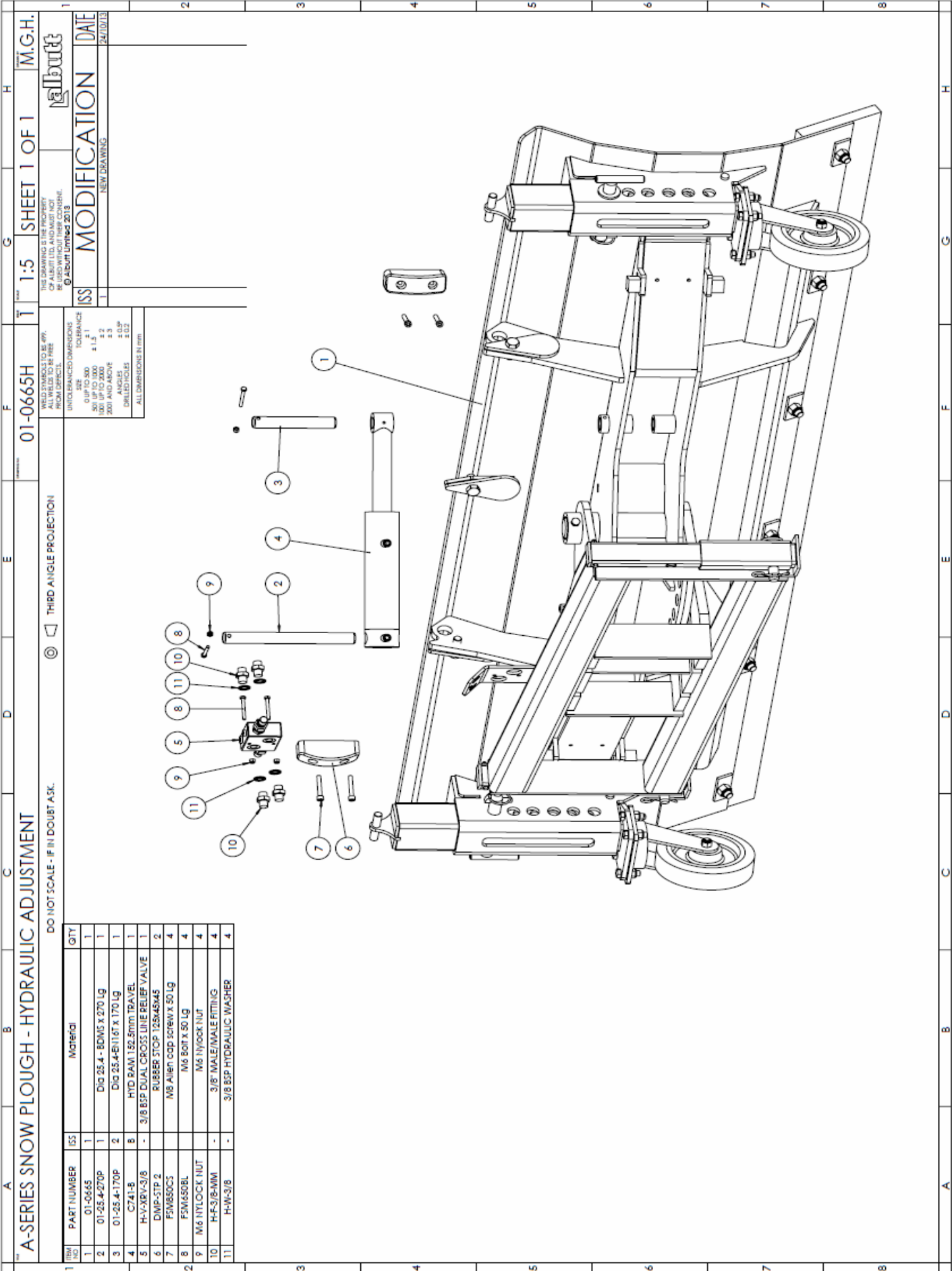
### **Hydraulic angle control**

**To prevent premature failure of ram seals, plough must be used with blade fully angled left or right against stops. (Do not set angle less than maximum by holding on the hydraulic ram).**



# PARTS DIAGRAMS





PART NUMBER		ISS	QTY
1	01-0665H	1	1
2	01-0665S	1	1
3	01-0665A-270P	1	1
4	01-0665A-170P	2	1
5	C741-B	8	1
6	HYD RAM 152.5mm TRAVEL	1	1
7	H-V-XB-V-3/8	-	1
8	DMP-5TP 2	-	2
9	RUBBER STOP 125x45x45	1	2
10	M8 Allen cap screw x 50 Lg	4	4
11	FM450BL	M6 Bolt x 50 Lg	4
12	M6 NYLOCK NUT	M6 NYLOCK NUT	4
13	H-F-3/8-MM	3/8" MALE/MALE FITTING	4
14	H-W-3/8	3/8 BSP HYDRAULIC WASHER	4

DO NOT SCALE - IF IN DOUBT ASK.

© THIRD ANGLE PROJECTION

WELD SYMBOLS TO BE 497.  
ALL WELDS TO BE FREE  
FROM DEFECTS.

UNTOOLERANCED DIMENSIONS  
TOLERANCE  
0 UP TO 500 ±1.5  
500 UP TO 1000 ±2  
1000 UP TO 2000 ±2  
2000 AND ABOVE ±2.5  
DRAUGHTING TOLERANCE ±0.2

ALL DIMENSIONS IN mm

A-SERIES SNOW PLOUGH FINAL ASSEMBLY DRAWING.

01-0665 1:10 SHEET 5 OF 6 M.G.H.

ITEM NO	PART NUMBER	ISS	Material	SP70/SP84/SP92 QTY	QTY
100	01-0665-8F	1	A-SERIES SNOW PLOUGH - BRACKET FRAME	1	1
101	01-0665-70	1	SP70A FRONT BLADE	1	-
102	01-0665-84	1	SP84A FRONT BLADE	-	1
103	01-0665-92	1	SP92A FRONT BLADE	-	1
104	01-0665-AWL	1	A-SERIES SNOW PLOUGH BLADE LEG ASSEMBLY	2	2
105	01-CW82-SP	-	Dia 200 CASTOR WHEEL (160ph)	2	2
106	01-0901-T	2	STD PIN T- Ø350-80MS x 260 Lg	1	1
107	01-0901-K	1	PIN K	2	2
108	01-0901-C	1	PIN C	2	2
109	01-0665-109L	1	6 PH-DOWEX 460	1	-
110	01-0665-110L	1	6 PH-DOWEX 460	-	1
111	01-0665-111L	1	6 PH-DOWEX 460	-	1
112	01-0626-25-SP70-R	1	190x25 RECLAIMED CONVEYOR BELT X 2135 Lg	1	-
113	01-0626-25-SP84-R	1	190x25 RECLAIMED CONVEYOR BELT X 2540 Lg	-	1
114	01-0626-25-SP92-R	1	190x25 RECLAIMED CONVEYOR BELT X 2800 Lg	-	1
115	FSM1670BL	-	M16 Bolt x 70 Lg	6	7
116	FSM12402S	-	M12 Bolt X 40 Lg	8	8
117	FSM10908L	-	M10 Bolt x 90 Lg	1	1
118	FSM16408L	-	M16 Bolt x 40 Lg	3	3
119	FSM6608L	-	M6 Bolt x 60 Lg	2	2
120	M16 NYLOCK NUT	-	M16 Nylock Nut	6	7
121	M12 NYLOCK NUT	-	M12 Nylock Nut	8	8
122	M10 NYLOCK NUT	-	M10 Nylock Nut	1	1
123	M6 NYLOCK NUT	-	M6 Nylock Nut	2	2
124	FSM16PW	-	M16 PLAIN WASHER	3	3
125	FSM11MWLP	-	LYNCH PIN - 11mm x 45mm	2	2
126	FS4-74R	-	R CLIP Dia 4 x 7.4mm	2	2
127	GLIMM45	-	M6 GREASE NIPPLE - 45 Degree	1	1

1/ FOR HYDRAULIC ADJUSTMENT USE IN CONJUNCTION WITH DWG NO 01-0665H.  
2/ FOR MANUAL ADJUSTMENT USE IN CONJUNCTION WITH DWG NO 01-0665M.

UNDIMENSIONED DIMENSIONS	TOLERANCES
0 UP TO 300	±1.5
300 UP TO 1000	±2
1000 UP TO 2000	±2.5
2000 AND ABOVE	±3.5
ANGLES	±0.5°
DRILLED HOLES	±0.2
ALL DIMENSIONS IN mm	