

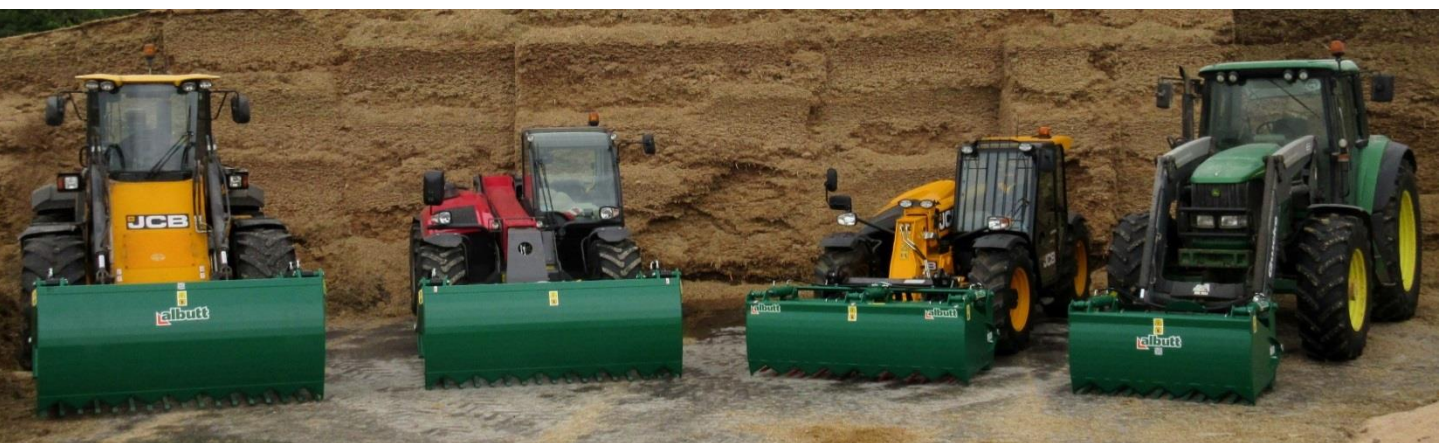
# **INSTRUCTION MANUAL AND PARTS CATALOGUE FOR**

## **THE ALBUTT RANGE OF SHEAR GRABS**

**THIS MUST BE USED IN CONJUNCTION WITH THE  
ALBUTT GENERAL OPERATOR'S MANUAL**

# CONTENTS

Introduction.....	4
Technical Data.....	5
Safety Instructions.....	6
Operating Instructions.....	7-8
Maintenance.....	9
Sharpening the blades.....	9
Tine Length.....	10
Storage.....	11
Parts Diagrams.....	12-18
Warning Stickers.....	19-23



**The shear grab blades must be checked and sharpened as required and at least once weekly using a file**

**EU CERTIFICATE OF CONFORMITY**

CONFORMING TO EC Machinery Directive 2006/42 EC

**We:**

Albutt Limited  
Great Washbourne  
Tewkesbury  
Glos. UK  
GL20 7AR



declare in sole responsibility, that the products

**Type: S130, S160, S190, S220**

**S160HX, S190HX, S220HX**

**SKM190HX, SKM220HX, SKM250HX**

**SK220HX, SK250HX**

to which this certificate applies, conforms to the basic safety  
and health requirements of the EC Machinery Directive 2006/42 EC,  
and the Transposed Harmonised Standards:

BS EN 1553 (2000)

A handwritten signature in black ink, appearing to read "A. D. Albutt".

Alistair Albutt

**Managing Director**

# INTRODUCTION

## Shear Grab Models

S130	1.30m wide	(4'3")	KV type tines
S160	1.60m wide	(5'3")	KV type tines
S190	1.90m wide	(6'3")	KV type tines
S220	2.20m wide	(7'3")	KV type tines
S160HX	1.60m wide	(5'3")	Hardox tines
S190HX	1.90m wide	(6'3")	Hardox tines
S220HX	2.20m wide	(7'3")	Hardox tines

## Shear King Mini Models

SKM190HX	1.90m wide	(6'3")	Hardox tines
SKM220HX	2.20m wide	(7'3")	Hardox tines
SKM250HX	2.50m wide	(8'3")	Hardox tines

## Shear King Models

SK220HX	2.20m wide	(7'3")	Hardox tines
SK250HX	2.50m wide	(8'3")	Hardox tines

## TECHNICAL DATA

Model	Rams	Centre Knife	Unladen Weight (kg)	Capacity m3	Height m	Depth m
S130	2x90mm	No	400	0.70	0.79	0.79
S160	2x90mm	No	460	0.85	0.79	0.79
S190	3x90mm	Yes	660	1.00	0.79	0.79
S220	3x90mm	Yes	715	1.15	0.79	0.79
S160HX	2x90mm	No	525	0.85	0.79	0.79
S190HX	3x90mm	Yes	750	1.00	0.79	0.79
S220HX	3x90mm	Yes	800	1.15	0.79	0.79
SKM190HX	2x115mm	No	1010	1.40	0.99	1.19
SKM220HX	2x115mm	No	1120	1.60	0.99	1.19
SKM250HX	2x115mm	No	1220	1.80	0.99	1.19
SK220HX	2x125mm	No	1350	2.20	1.24	1.35
SK250HX	2x125mm	No	1440	2.50	1.24	1.35

**We recommend that genuine Albutt bolt on brackets are used on these attachments.**

**Any weld on brackets which adversely affect the structure of the product may invalidate warranty.**

# SAFETY INSTRUCTIONS

**IMPORTANT – READ BEFORE USE | REMOVE TRANSPORT BOLTS BEFORE USE**

## INTENDED USE

The intended use of the Albutt Shear Grab (S130, S160, S160HX, S190, S190HX, S220, S220HX, SKM190HX, SKM220HX, SKM250HX, SK220HX & SK250HX) is for the safe shearing of grass, maize or wholecrop silage from the face of a silage clamp. This product must only be used for this purpose and under no circumstances should be used as a lifting device or access platform.

## SAFETY INSTRUCTIONS

Please read the following precautions before operating the equipment, and at intervals afterwards to refresh your memory. In particular be aware of the following:

**Before fitting the equipment to the tractor, check that the combined weight of the Shear Grab and the load of silage do not exceed the safe working load of the front axle and tyres of the tractor. It is important to ensure that the hydraulic capacity of the tractor is adequate.**

Before carrying out any maintenance to the Shear Grab, ensure that the tractor engine is switched off and the ignition key is removed, the parking brake is on and the Shear Grab is supported.

- Never place your arms, legs hands or head in the machine!
- Check all bolts are tight and guards are secure. Check that there are no oil leaks.
- Make sure tractor engine is stopped and ignition key remove before connecting/disconnecting hydraulic hoses etc. Never start the tractor when hoses are open.
- Check hoses regularly for leaks or damage. If skin is in contact with hydraulic fluid seek medical advice immediately. Replace any worn or damaged hoses straight away.
- Traction is greatly reduced when the tractor is loaded on the front. Take extra care when turning or when on slippery or rough terrain.
- Ensure that the Grab is closed and lowered when travelling to shield the tines and blades.
- Wear heavy duty gloves when sharpening blades.
- Do not allow children or onlookers on or near the machine.
- Ensure the Grab is closed when not in use.
- We recommend that the attachment is placed on a trailer when travelling on the public highway.

# OPERATING INSTRUCTIONS

**HYDRAULIC SUPPLY MUST NOT EXCEED 207 BAR and 80L/min**

- Before use, check that the blades are clean and sharp. Lightly sharpen blades before first use.
- The operator should cut in one direction across the face from one side to the other. This will ensure a clean clamp face and avoid secondary fermentation.
- Keep nuts tight!! If the tines become loose, mechanical damage will occur and will also result in the clamp face being cut and torn.

**For Safe Operation:**

1: The Shear Grab should be opened and the tines levelled before being driven hard into the clamp face. The tines should not exceed the dimensions shown on the next page (Cutting Positions) from the top of the clamp to allow the cylinders to fully extend and allow the grab to fully close.

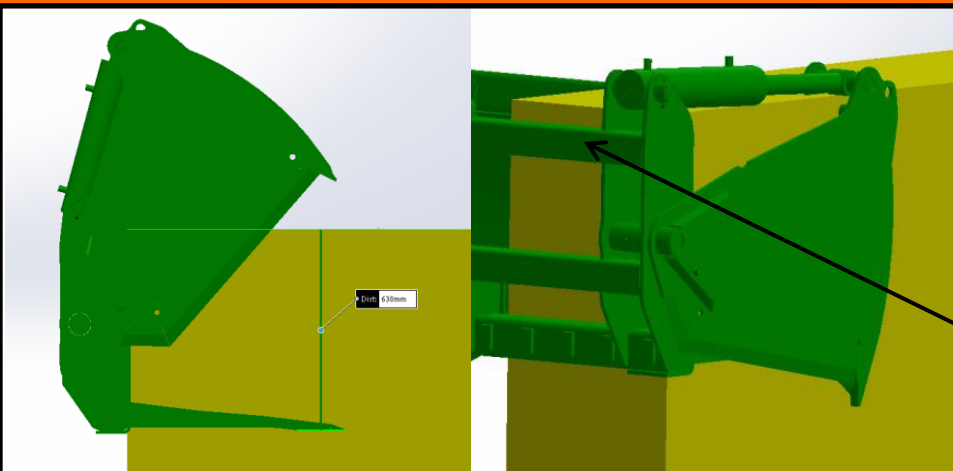
2: As the Shear Grab hydraulics are operated, the rams will extend and the knives will cut down through the silage. Care must be taken to hold the tines level and still, if necessary powering down the arms to lift the tractor and this weight will help hold the tines.

3: When the Shear Grab is fully closed, it should be lifted and crowded back to ensure a clean clamp face. If the grab will not fully close, reopen the grab, reverse out and start the procedure again.

**This attachment is only designed for the removal of silage from a clamp or pit using the above procedure. It must not be used for any other operations .**



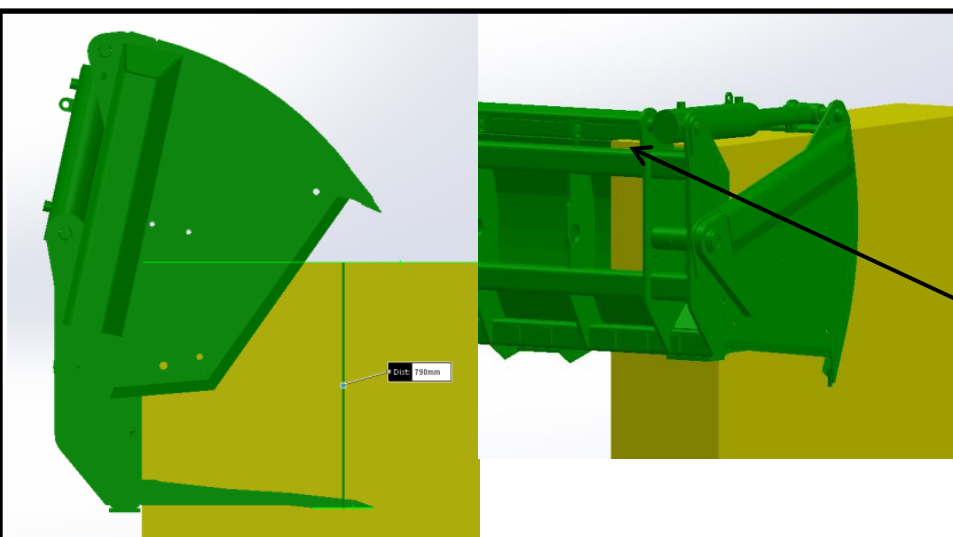




## Shear Grabs – S130 to S220 inc Hardox

Enter the pit face at no more than 630mm below the top surface of the desired block.

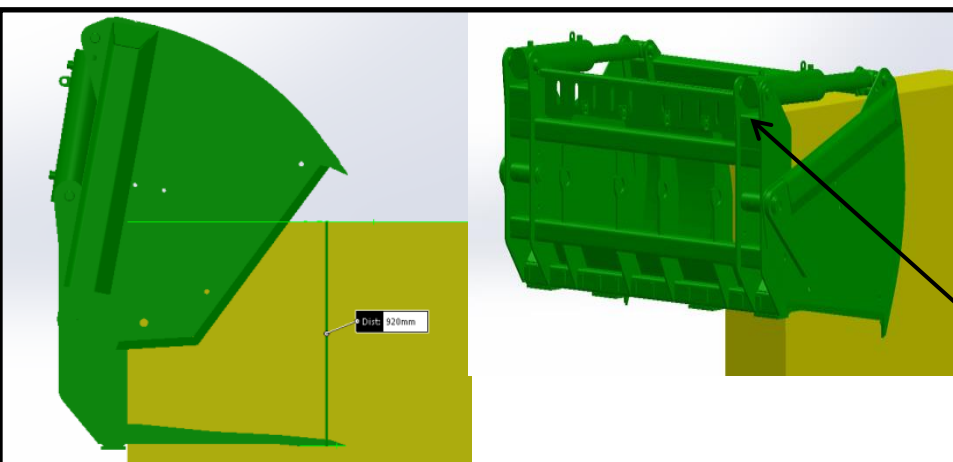
Use the top of the top box section as a guide for this.



## Shear King Mini

Enter the pit face at no more than 790mm below the top surface of the desired block.

Use the top of the top box section as a guide for this.



## Shear King

Enter the pit face at no more than 920mm below the top surface of the desired block.

Use the top of the shoulder below the cylinder as a guide for this.



# MAINTENANCE

- All pivots should be greased regularly.
- Check tightness of all tines on a regular basis.
- Check all hydraulic items for signs of wear and leakage.
- Keep blades very sharp. Although the blades are of high quality steel, they must have regular attention. They may require a few minutes of gentle fine filing just to maintain the edges. Any nicks or burrs must be filed away.
- In the event of a serious irreparable damage to the Shear Grab knives, replacement blades may be fitted by cutting the blades away from the frame and new blades welded into position.
- Over time the Hardox tines will wear. Reference the next page (Tines Lengths) and the drawing attached at the rear for when tine tips need to be fitted to prevent damage to your Shear Grab.

## SHARPENING THE BLADES

- Using a 2nd cut flat file, place the file on the chamfered face of the blade and draw-file the blade face.
- DO NOT file the flat of the blade.
- ALWAYS ensure that heavy gloves are worn when sharpening the blade.
- **A ROTARY GRINDER MUST NOT BE USED TO SHARPEN BLADES AS THIS WILL DESTROY THE TEMPER OF THE STEEL.**



# TINE LENGTH (Hardox Models)

- It is important that the tines on your Albutt Hardox Shear Grab are not allowed to wear below a certain point.
- Badly worn tines will effect how clean of a cut can be achieved. It can also damage the Shear Grab.
- When Hardox tines are worn, replacement tips can be welded onto them to take them back to their original length.
- Please refer to the dimensions below to as and when you should replace the tines tips on your Hardox tines.
- Dimensions shown are measured from the face of the tine holder.

Hardox Models				
S160HX	S190HX	S220HX	SHEAR KING MINI	SHEAR KING
640mm	640mm	640mm	695mm	845mm



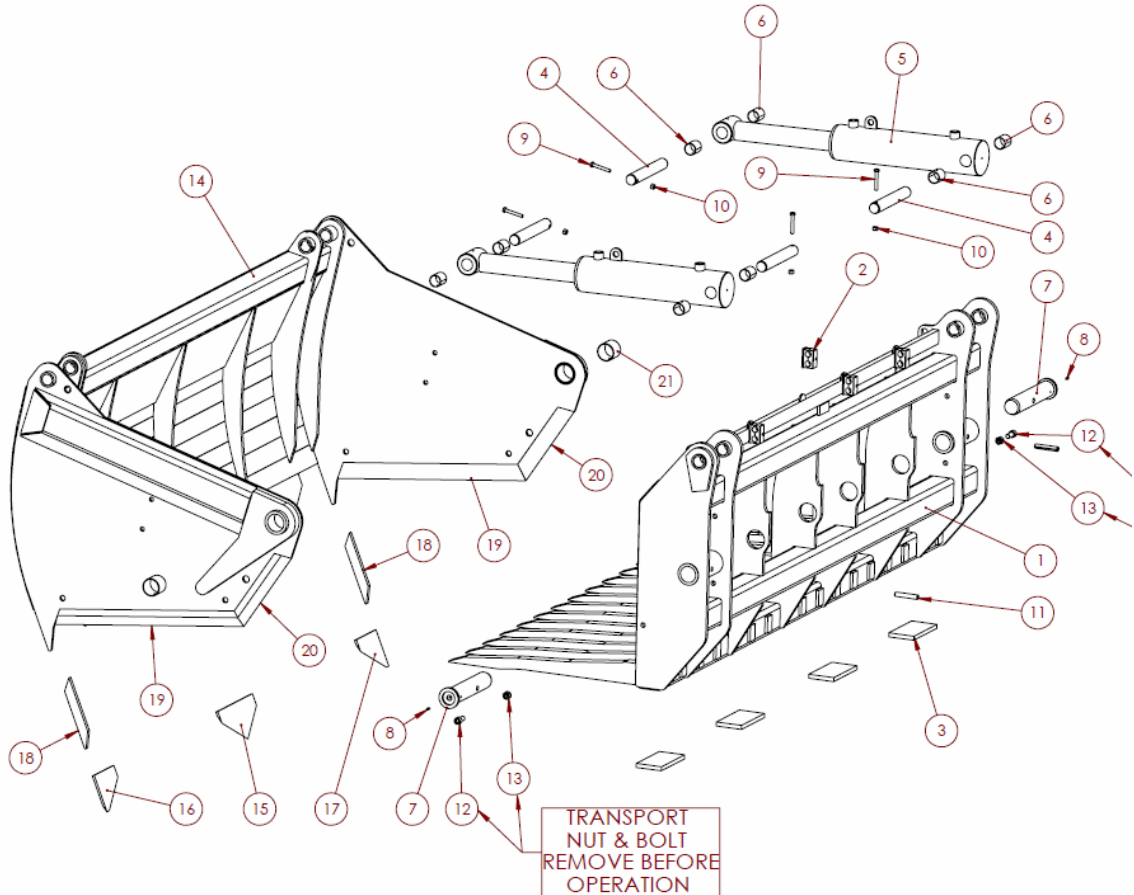
# STORAGE

- Place the Shear Grab on a level site. After stopping the engine and applying the brake, disconnect the Shear Grab from the tractor. Clean the machine thoroughly and paint any bare metal. Apply grease to exposed ram rods when shear grab is not being used for a period longer than 7 days. Cover the machine with a waterproof cover.



**REMOVE TRANSPORT  
PINS BEFORE USE**

# PARTS DIAGRAMS





ITEM NO.	PART NUMBER	DESCRIPTION	S160/ QTY.	S130/ QTY.
1	01-0267-160HX-F	S160HX FORK FRAME	1	-
2	01-0267 (2 RAM Fork) (6)	S130HX FORK FRAME	-	1
3	01-0267-160-G	S160 S/GRAB FRONT	1	-
4	01-0267 (2 RAM Grab) (5)	S130 S/GRAB FRONT	-	1
5	01-50-210W	S/GRAB PIVOT PIN - SIDE	2	2
6	01-35-190P (2)	RAM PIN - BASE	2	2
7	01-35-175P (2)	RAM PIN - ROD END	2	2
8	D883	HYDRAULIC RAM	2	2
9	FS12-70CS	Dia 12 ROLL PIN x 70 Lg	2	2
10	FSM865BL	M8 BOLT x 65 Lg	4	4
11	FSM8LN	M8 Nylock Nut	4	4
12	FSM10LN	M10 Nylock Nut	2	-
13	H-3/8-T-M	3/8" BSP HYD T-PIECE	2	2
14	C2-820-ST	CONUS 2 - 820 Lg STRAIGHT TINE	2	2
15	C1-820-CR-N	CONUS 1 - 820 Lg CRANKED TINE	10	8
16	FSM1635CS	M16 x 35 Lg ALLEN CAP SCREW	2	2
17	FSM16LN	M16 Nylock Nut	-	2

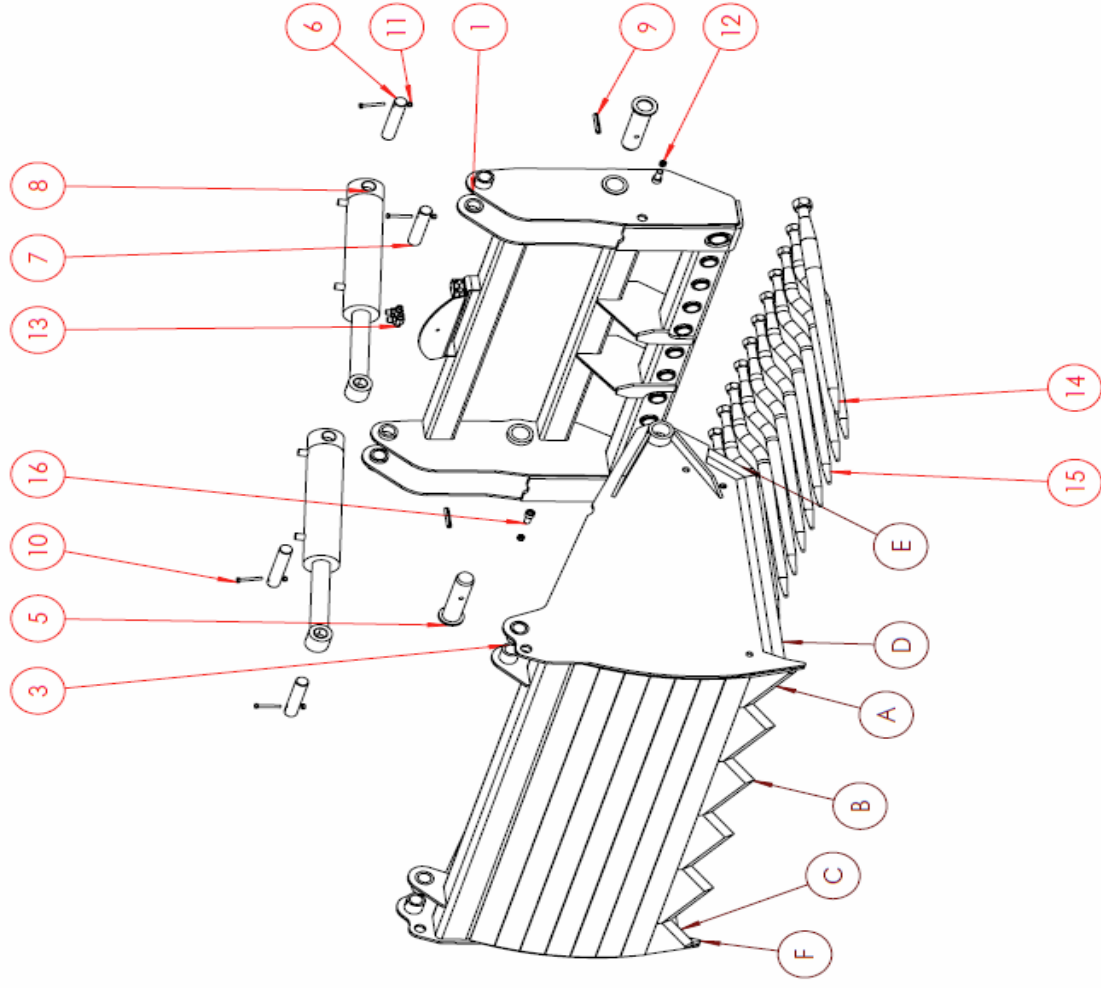
BLADE COMPONENTS:

A - 01-0267-220-40 - LEFT HAND HALF TOOTH  
B - 01-0267-220-39 - MIDDLE FULL TOOTH  
C - 01-0267-220-41 - RIGHT HAND HALF TOOTH

D - 01-0267-220-42 - SIDE KNIFE

E - 01-0267-220-43 - REAR SIDE KNIFE

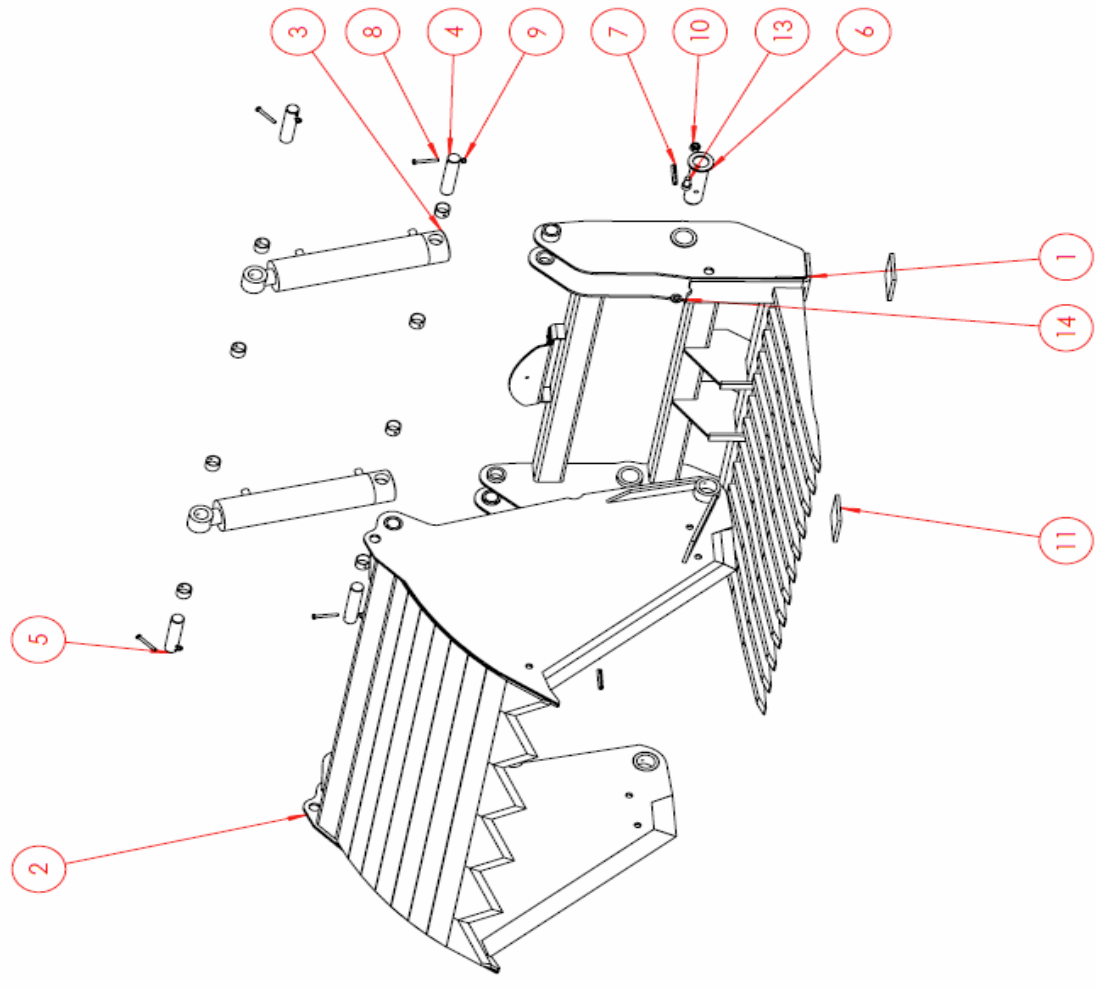
F - 01-0267-220-45 - REPLACEMENT BLADE TOOTH



DO NOT SCALE - IF IN DOUBT ASK

ITEM NO.	PART NUMBER	DESCRIPTION	QTY.
1	01-0267-160HX-F	S160HX FORK FRAME	1
2	01-0267-160-G	S160 S/GRAB FRONT	1
3	D883	HYDRAULIC RAM	2
4	01-35-190P (2)	RAM PIN - BASE	2
5	01-35-175P (2)	RAM PIN - ROD END	2
6	01-50-210W	S/GRAB PIVOT PIN - SIDE	2
7	FS12-70CS	Dia 12 ROLL PIN x 70 Lg	2
8	FSM865BL	M8 BOLT x 65 Lg	4
9	FSM8LN	M8 Nylock Nut	4
10	FSM16LN	M16 Nylock Nut	2
11	01-0267-24-RS	S/GRAB FORK - SIDE WEAR PI	2
12	H-3/8-T-M	3/8" BSP HYD T-PIECE	2
13	FSM1635CS	M16 x 35 Lg ALLEN CAP SCREW	2
14	FSM16PW		2

- 01-0267-220-40 - LEFT FRONT BLADE
- 01-0267-220-39 - MIDDLE FRONT BLADE
- 01-0267-220-41 - RIGHT FRONT BLADE
- 01-0267-220-42 - SIDE KNIFE
- 01-0267-220-43 - REAR SIDE KNIFE
- 01-0267-220-45 - REPLACEMENT BLADE TOOTH

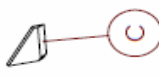
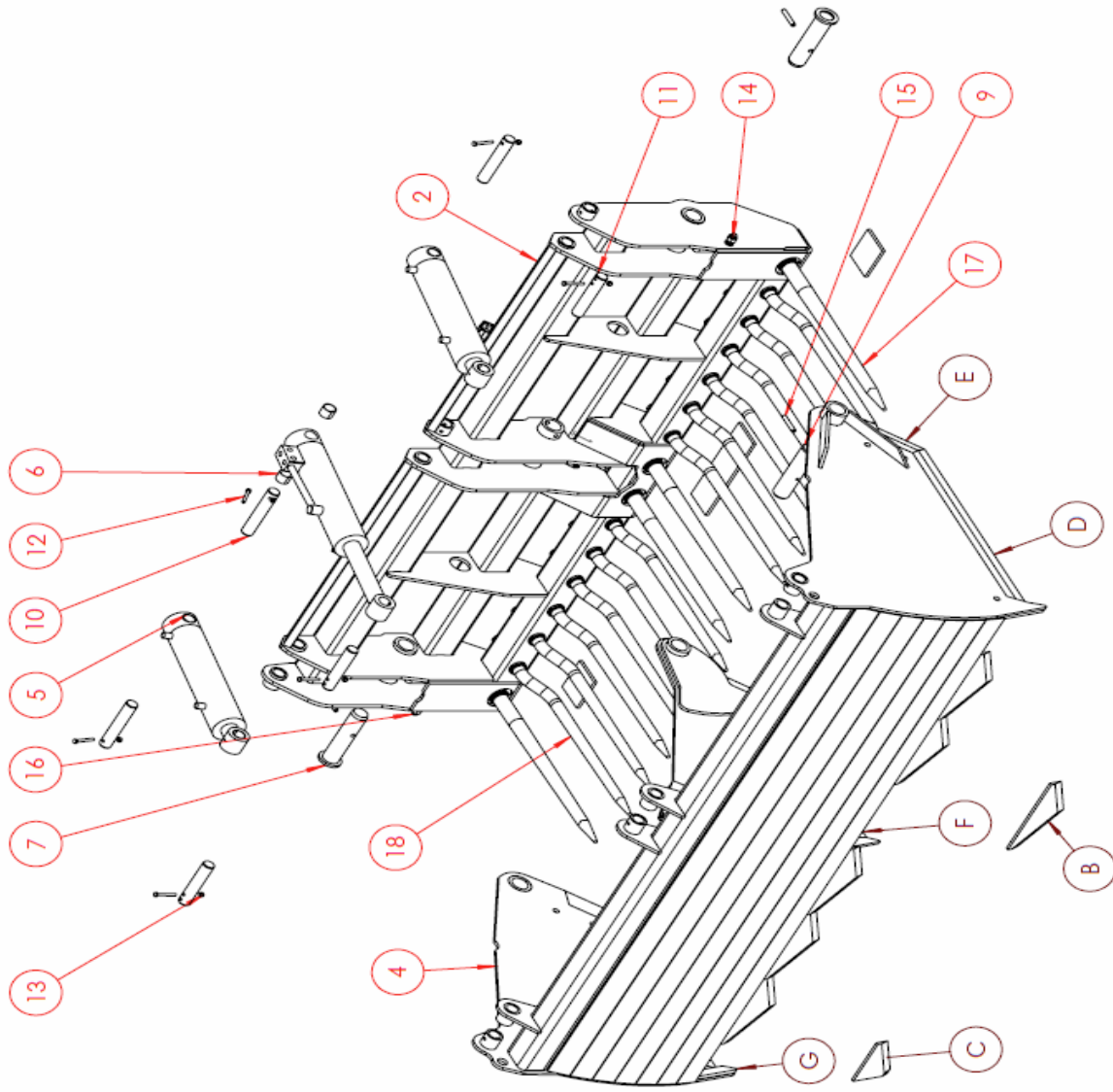


DO NOT SCALE - IF IN DOUBT ASK

ITEM NO.	PART NUMBER	DESCRIPTION	S220/ S190/ QTY.
1	01-0267-190HX-F	S190HX FORK FRAME	- 1
2	01-0267-220HX-F	S220HX FORK FRAME	1 -
3	01-0267-190-G	S190 S/GRAB FRONT	- 1
4	01-0267-220-G	S220 S/GRAB FRONT	1 -
5	D883	HYDRAULIC RAM	2 2
6	D882	HYDRAULIC RAM	1 1
7	01-50-210W	S/GRAB PIVOT PIN - SIDE	2 2
8	01-50-210G	S/GRAB PIVOT PIN - CENTRE	- 1
9	01-50-210G	S/GRAB PIVOT PIN - CENTRE	1 -
10	01-35-190P (2)	RAM PIN - BASE	3 3
11	01-35-175P (2)	RAM PIN - ROD END	3 3
12	FSM865BL	M8 BOLT x 65 Lg	6 6
13	FSM81LN	M8 Nylock Nut	6 6
14	FSM16LN	M16 Nylock Nut	2 2
15	FS12-70CS	Dia 12 ROLL PIN x 70 Lg	3 3
16	FSM1635CS	M16 x 35 Lg ALLEN CAP SCREW	2 2
17	C2-820-ST	CONUS 2 - 820 Lg STRAIGHT TINE	4 4
18	C1-820-CR-N	CONUS 1 - 820 Lg CRANKED TINE	12 10

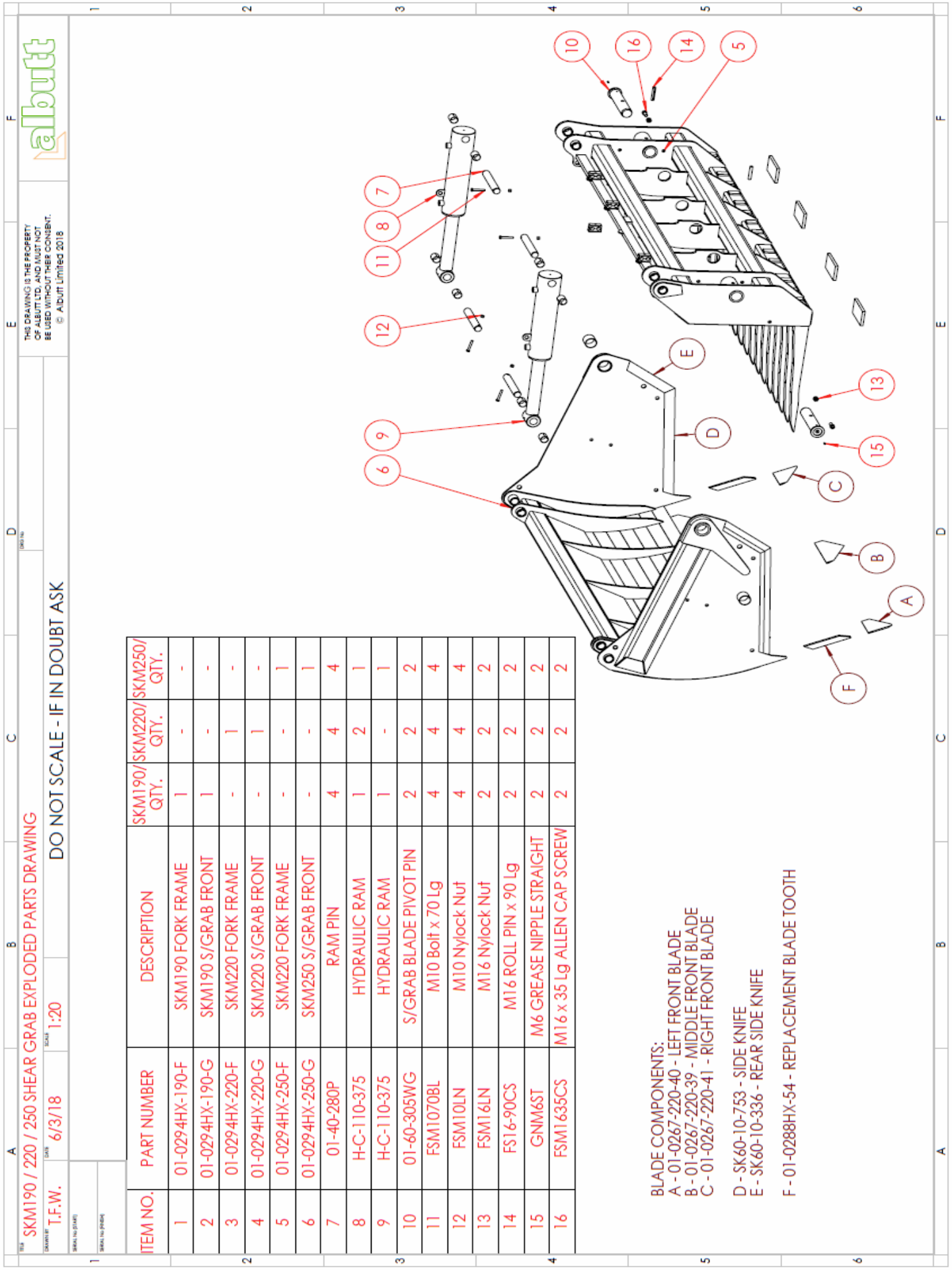
BLADE COMPONENTS:

- A - 01-0267-220-40 - LEFT HAND HALF TOOTH
- B - 01-0267-220-39 - MIDDLE FULL TOOTH
- C - 01-0267-220-41 - RIGHT HAND HALF TOOTH
- D - 01-0267-220-42 - SIDE KNIFE
- E - 01-0267-220-43 - REAR SIDE KNIFE & REAR MID KNIFE
- F - 01-0267-220-44 - MIDDLE KNIFE
- G - 01-0267-220-45 - REPLACEMENT BLADE TOOTH









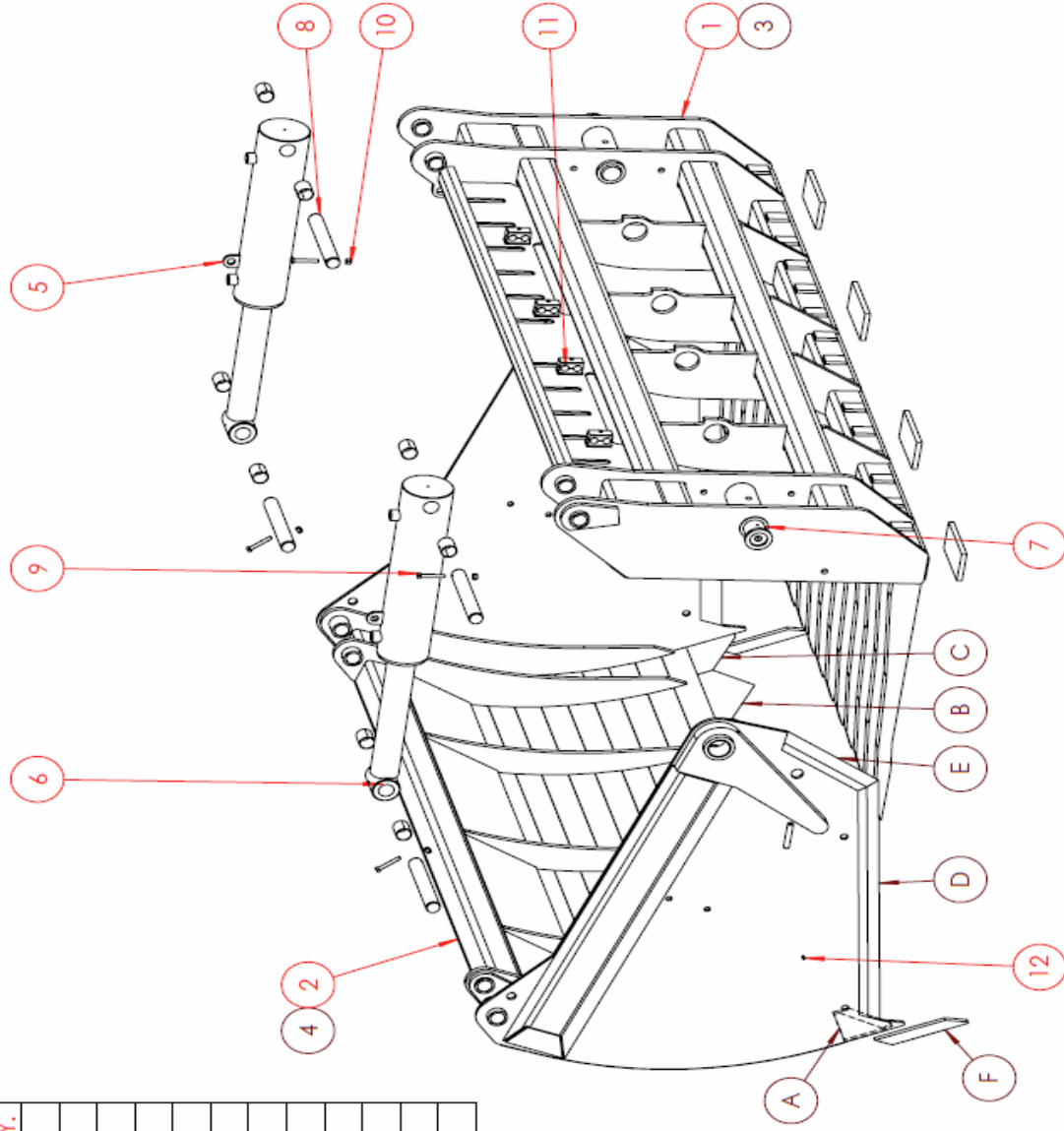
ITEM NO.	PART NUMBER	DESCRIPTION	SK250/ SK220/ QTY.
1	01-0288HX-250-F	SK250 FORK FRAME	1 -
2	01-0288HX-250-F	SK250 S/GRAB FRONT	1 -
3	01-0288HX-220-F	SK220 FORK FRAME	- 1
4	01-0288HX-220-G	SK220 S/GRAB FRONT	- 1
5	H-C-125-425	HYDRAULIC RAM	1 -
6	H-C-125-425	HYDRAULIC RAM	1 2
7	01-60-305WG	S/GRAB BLADE PIVOT PIN	2 2
8	01-40-280P	RAM PIN	4 4
9	FSM1070BL	M10 Bolt x 70 Lg	4 4
10	FSM101LN	M10 Nylock Nut	4 4
11	FS16-90CS	M16 ROLL PIN x 90 Lg	2 2
12	GNM6ST	M6 GREASE NIPPLE STRAIGHT	2 2

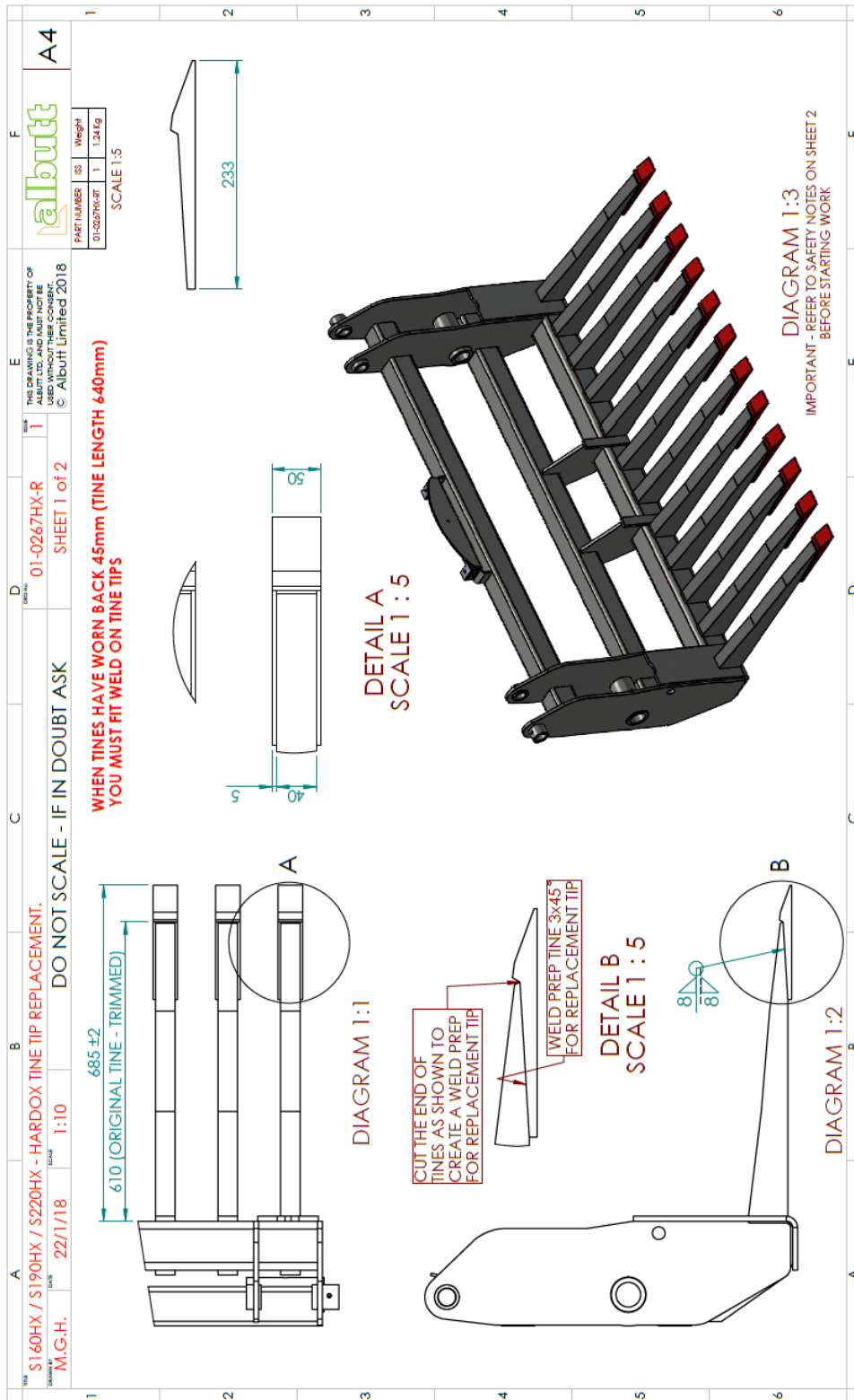
BLADE COMPONENTS:

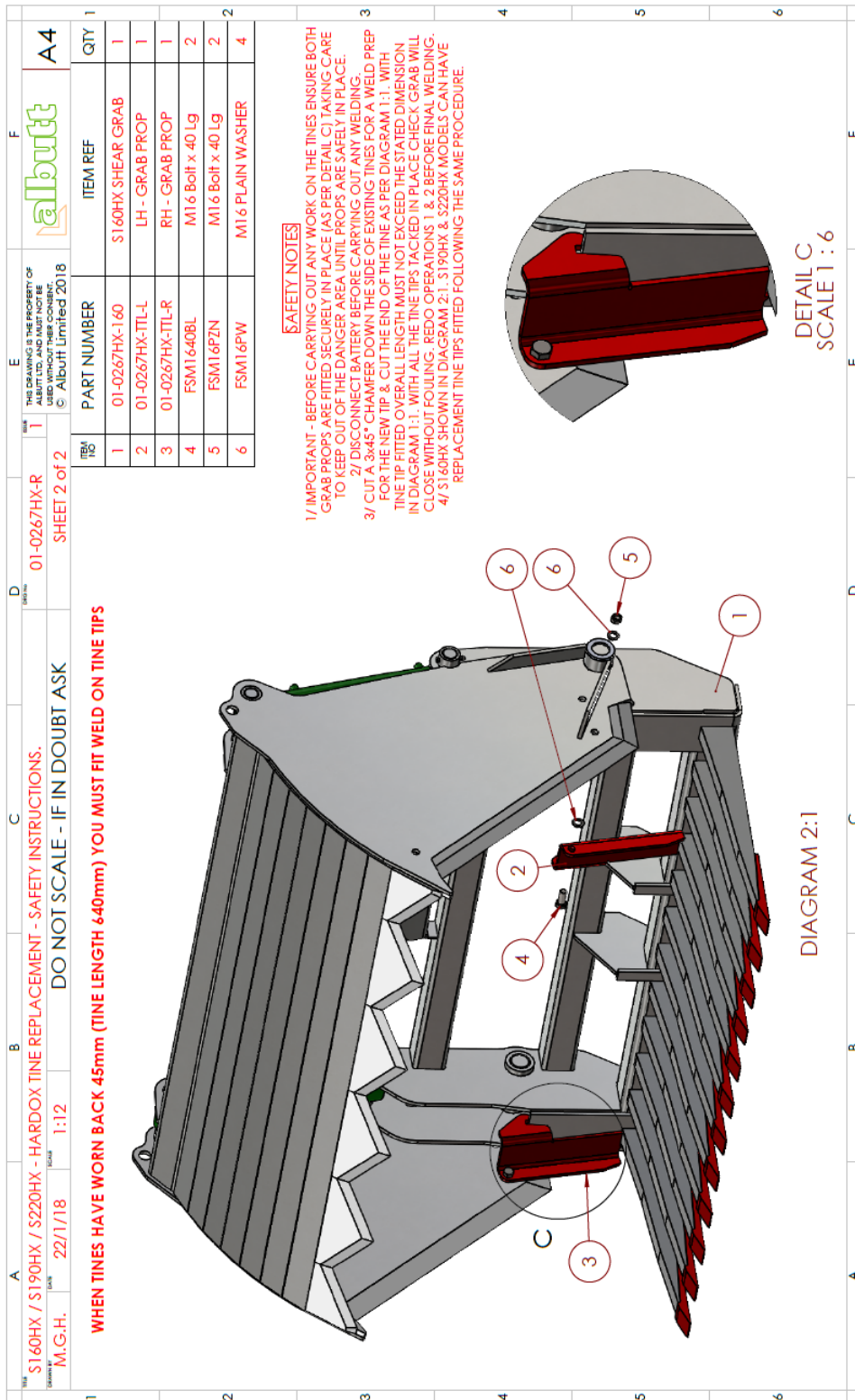
A - 01-0267-220-40 - LEFT FRONT BLADE  
B - 01-0267-220-39 - MIDDLE FRONT BLADE  
C - 01-0267-220-41 - RIGHT FRONT BLADE

D - SK60-10-906 - SIDE KNIFE  
E - SK60-10-336 - REAR SIDE KNIFE

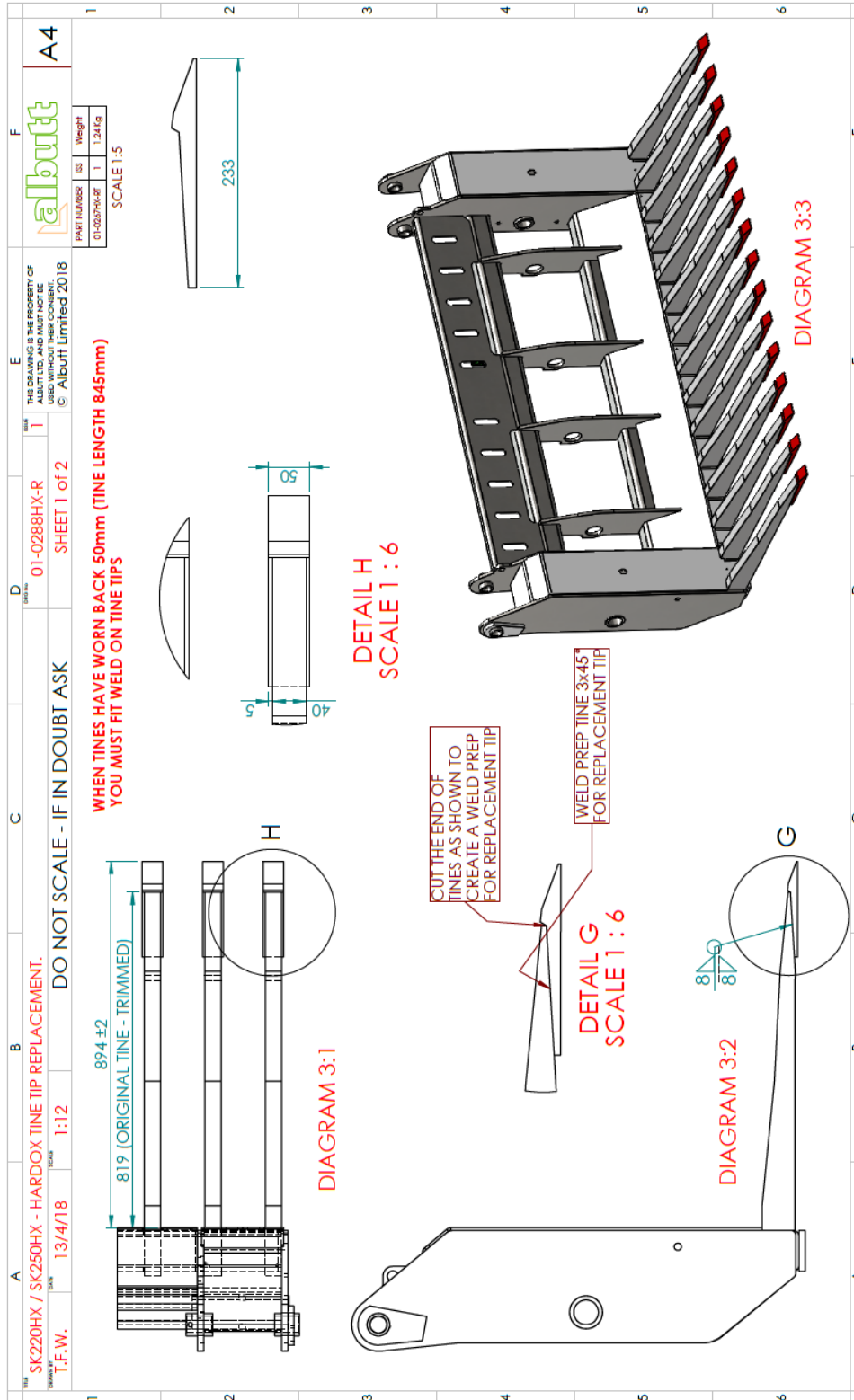
F - 01-0288HX-54 - REPLACEMENT BLADE TOOTH

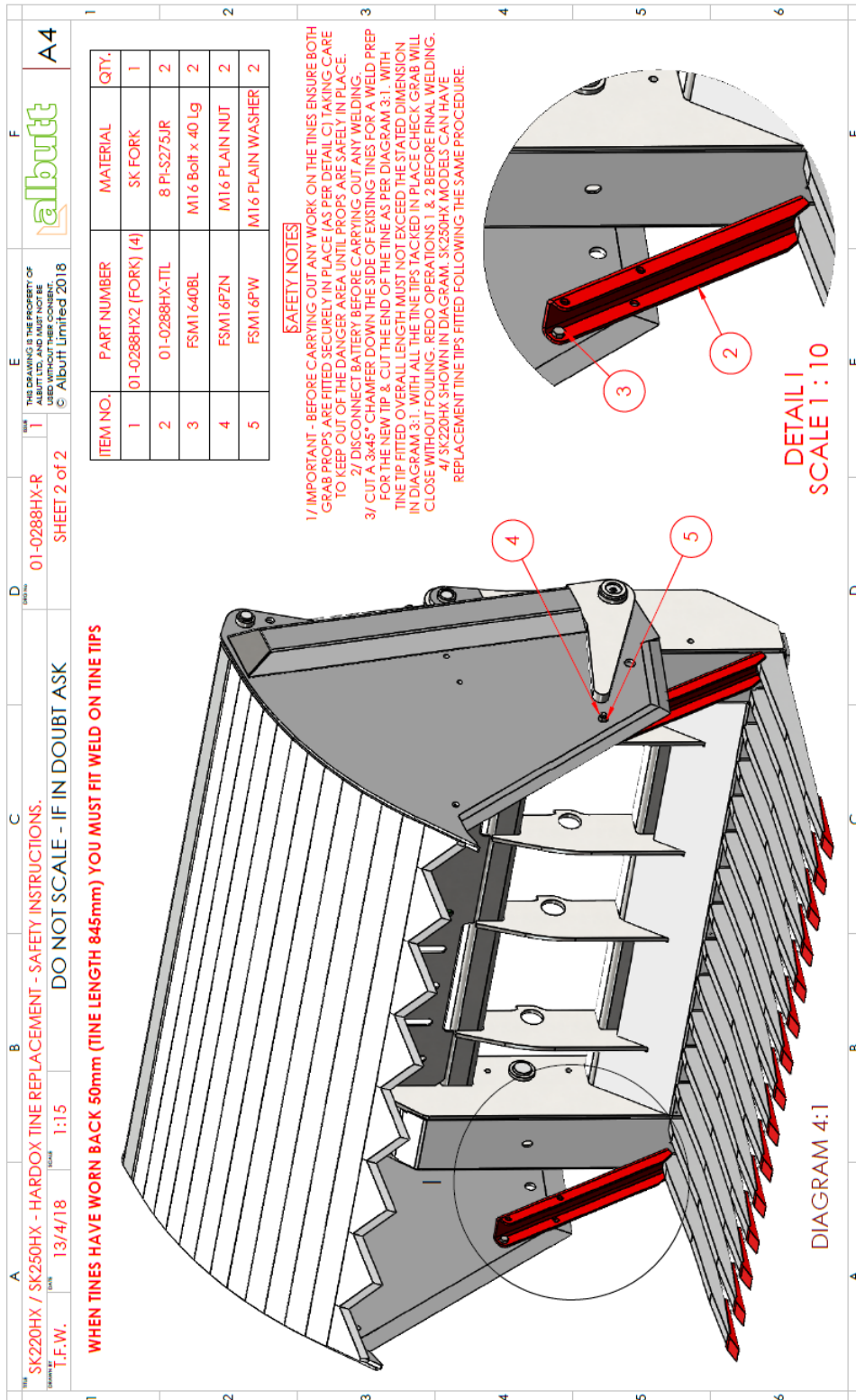




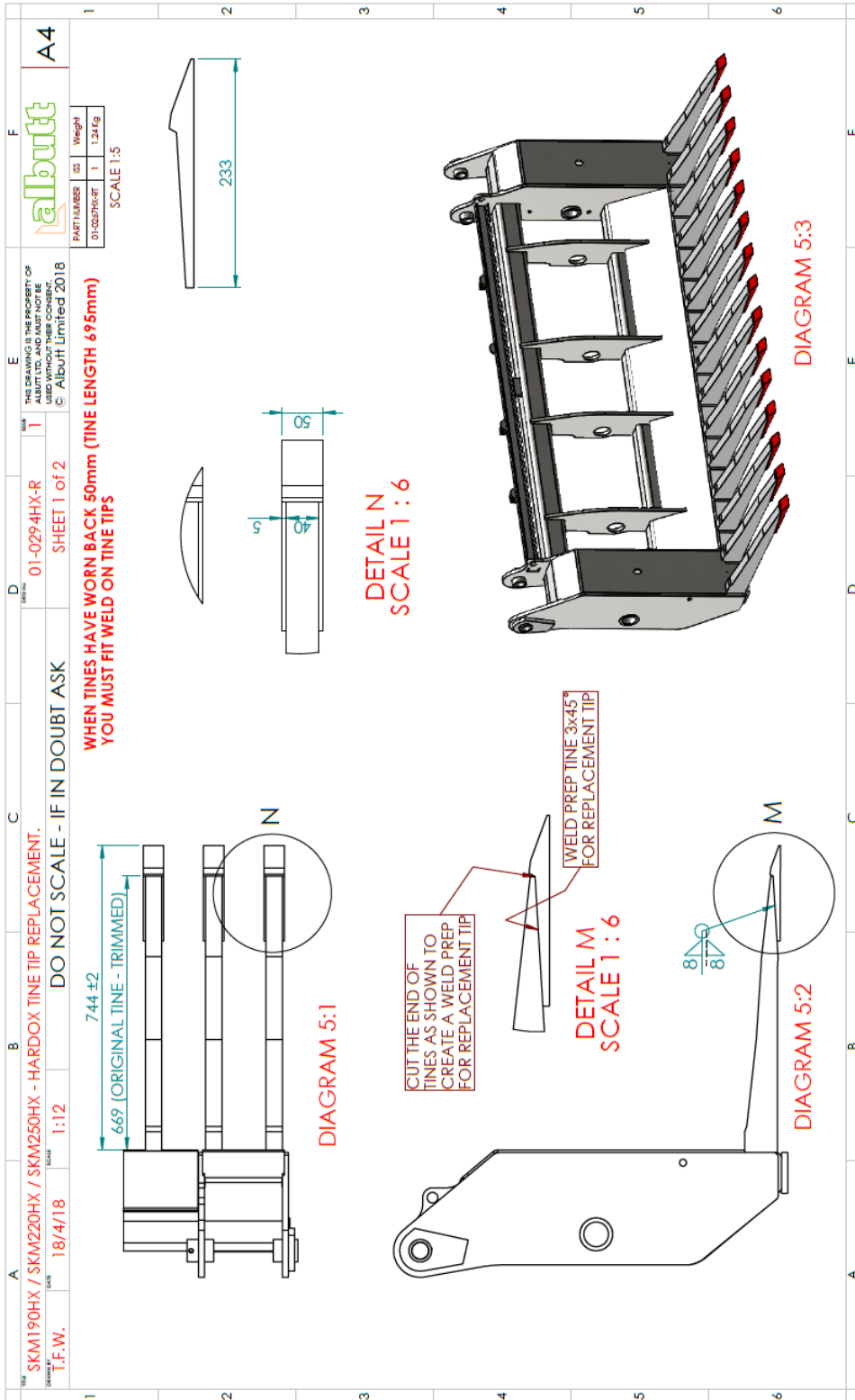


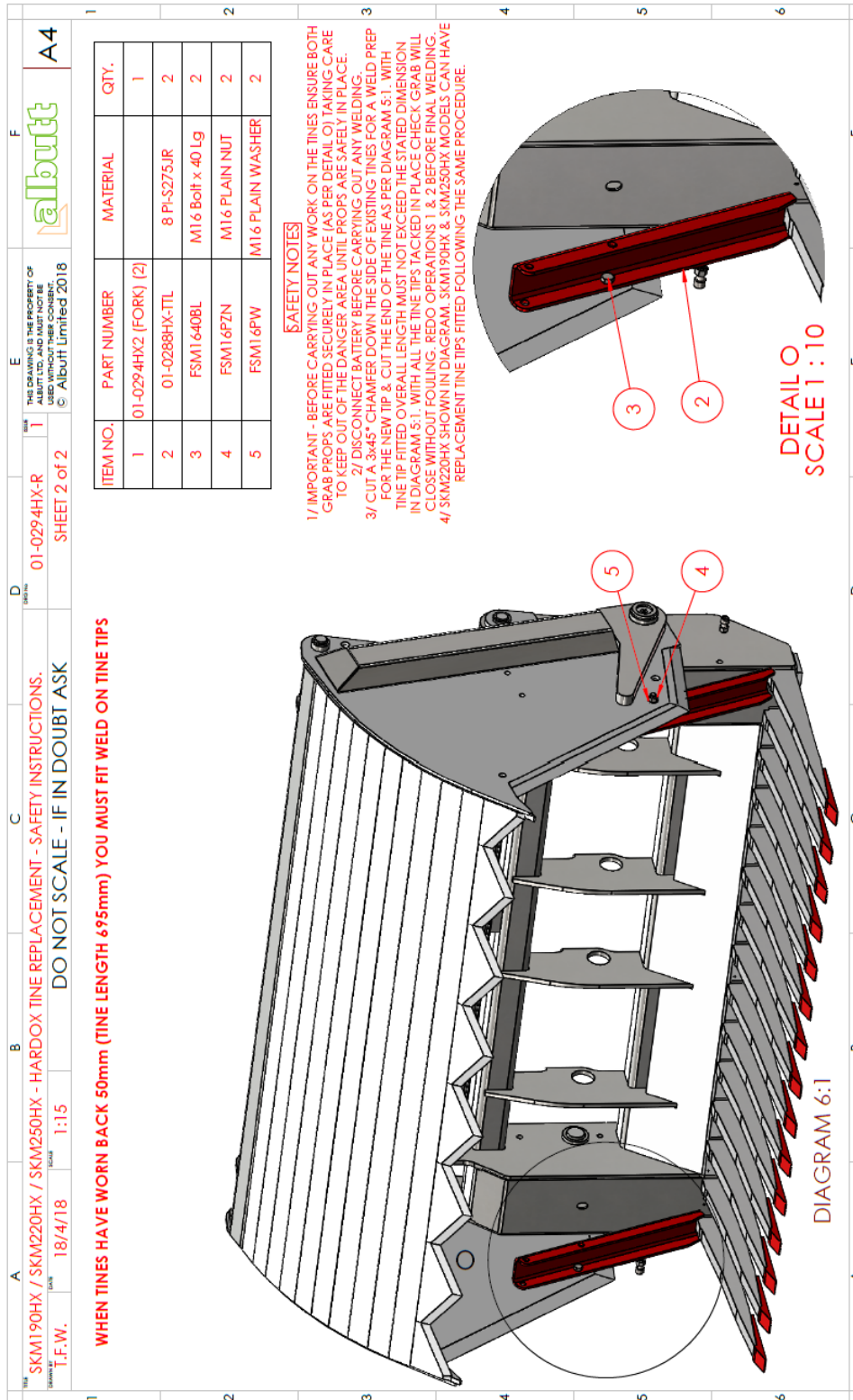




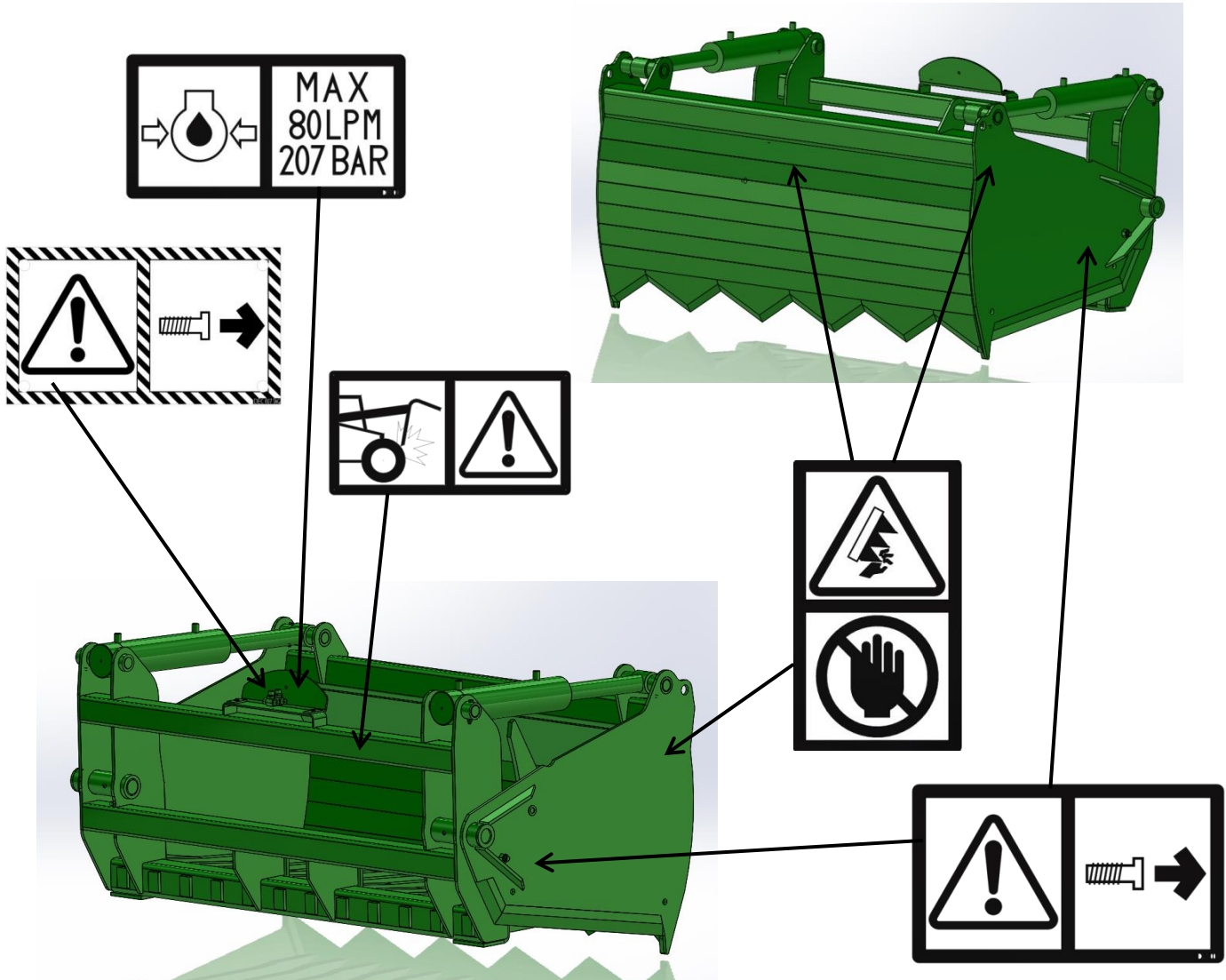




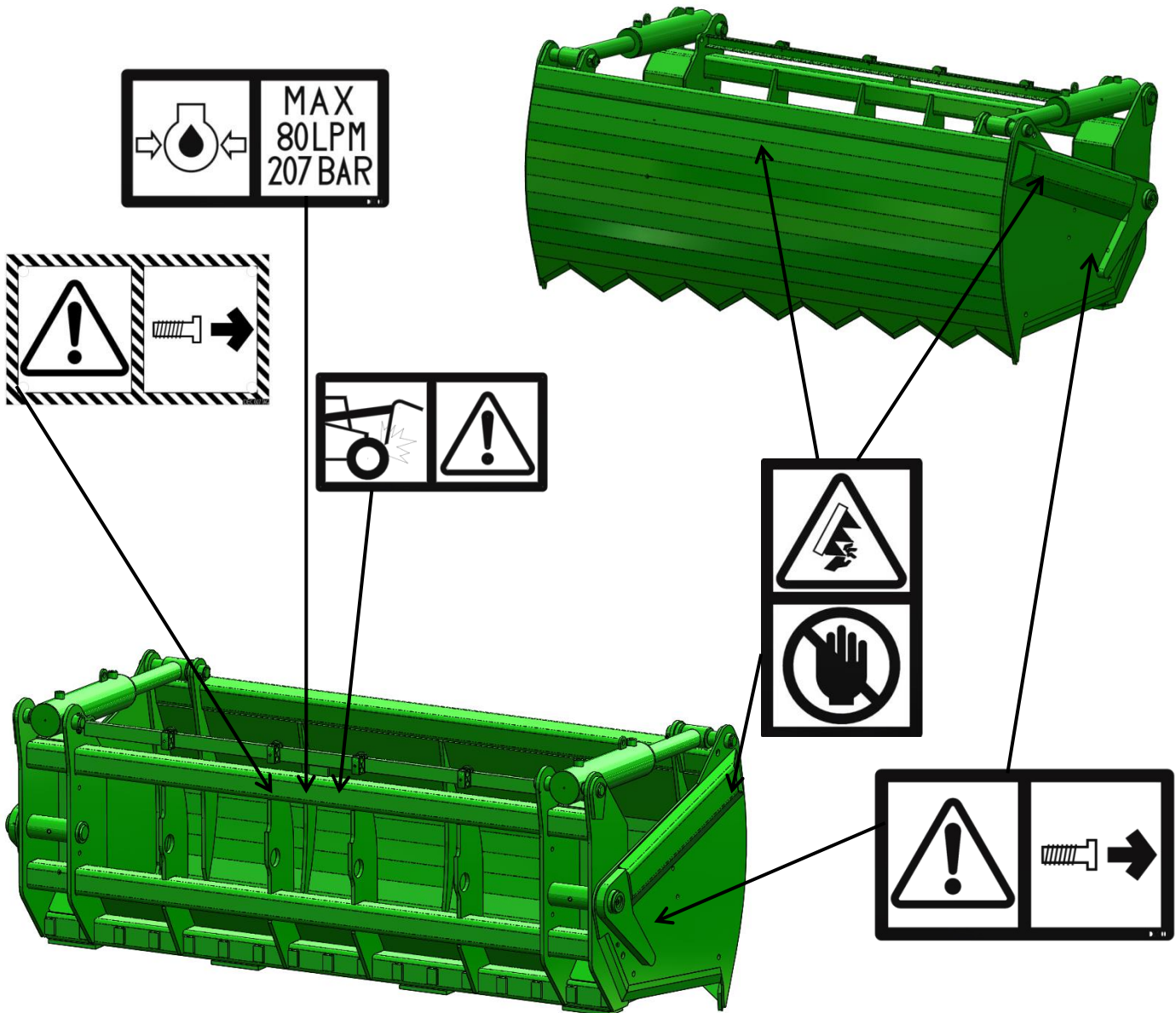




# WARNING STICKERS - S130-S220 INC HARDOX



# WARNING STICKERS - SHEAR KING MINI





# WARNING STICKERS - SHEAR KING

