

INSTRUCTION MANUAL AND PARTS CATALOGUE FOR

THE ALBUTT CLAM SHELL BUCKET

**THIS MUST BE USED IN CONJUNCTION WITH THE
ALBUTT GENERAL OPERATOR'S MANUAL**

CONTENTS

Safety Instructions.....	4
Operating Instructions.....	5
Technical Data.....	5
Maintenance.....	6
Storage.....	6
Parts Diagrams.....	7
Warning Stickers.....	8



EU CERTIFICATE OF CONFORMITY

CONFORMING TO EC Machinery Directive 2006/42 EC

We:

Albutt Limited
Great Washbourne
Tewkesbury
Glos. UK
GL20 7AR



declare in sole responsibility, that the products

Type: Clam Shell Buckets

to which this certificate applies, conforms to the basic safety
and health requirements of the EC Machinery Directive 2006/42 EC,
and the Transposed Harmonised Standards:

BS EN 1553 (2000)

A handwritten signature in black ink, appearing to read "A. D. Albutt".

Alistair Albutt

Managing Director

SAFETY INSTRUCTIONS

IMPORTANT – READ BEFORE USE | REMOVE TRANSPORT BOLTS BEFORE USE

INTENDED USE

The intended use of the Albutt Clam Shell (A070-76CS, A089-80CS) is for the safe handling of loose bulk material by scooping up and opening up to allow the deposit of material. This is not a 4in1 bucket and therefore is not for grading or clamping material. This product must only be used for this purpose and under no circumstances should be used as a lifting device or access platform.

SAFETY INSTRUCTIONS

Please read the following precautions before operating the equipment, and at intervals afterwards to refresh your memory. In particular be aware of the following:

Before fitting the equipment to the materials handler, check that the combined weight of the Clam Shell Bucket and the load of material do not exceed the safe working load of the front axle and tyres of the handler. It is important to ensure that the hydraulic capacity of the handler is adequate.

Before carrying out any maintenance to the Clam Shell Bucket, ensure that the handler engine is switched off and the ignition key is removed, the parking brake is on and the Clam Shell Bucket is supported.

- Never place your arms, legs hands or head in the machine!
- Check all bolts are tight and guards are secure. Check that there are no oil leaks.
- Make sure handler engine is stopped and ignition key removed before connecting/disconnecting hydraulic hoses etc. Never start the handler when hoses are open.
- Check hoses regularly for leaks or damage. If skin is in contact with hydraulic fluid seek medical advice immediately. Replace any worn or damaged hoses straight away.
- Traction is greatly reduced when the handler is loaded on the front. Take extra care when turning or when on slippery or rough terrain.
- Ensure that the attachment is closed and lowered when travelling.
- Do not allow children or onlookers on or near the machine.
- Ensure the clam is closed when not in use.

OPERATING INSTRUCTIONS

HYDRAULIC SUPPLY MUST NOT EXCEED 207 BAR and 80L/min

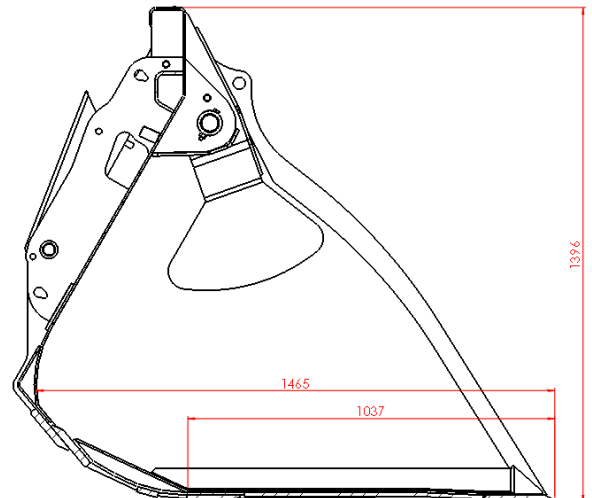
For Safe Operation:

- 1: Operate the hydraulics to ensure the clam is fully closed
- 2: Position the bucket on the floor and fill using a scooping method like a standard bucket.
- 3: For travelling lower the boom as far as possible to lower the centre of gravity to avoid rollover and ensure maximum vision from the driving seat.
- 4: To deposit load, position the attachment as low as possible (to avoid destruction or wide deposit of load) above the desired destination and operate the hydraulics to open the clam.
- 5: When material has dropped close the clam and return to ground level.

This attachment is only designed for the lifting of material via scooping and depositing of material via opening. It is not for grading or grabbing.

TECHNICAL DATA

Model	Capacity (m ³)	Weight (kg)	Width (ft/m ^m)
A089-80CS	2.5	1150	8' / 2440
A070-76CS	2.0	1070	7'6" / 2290

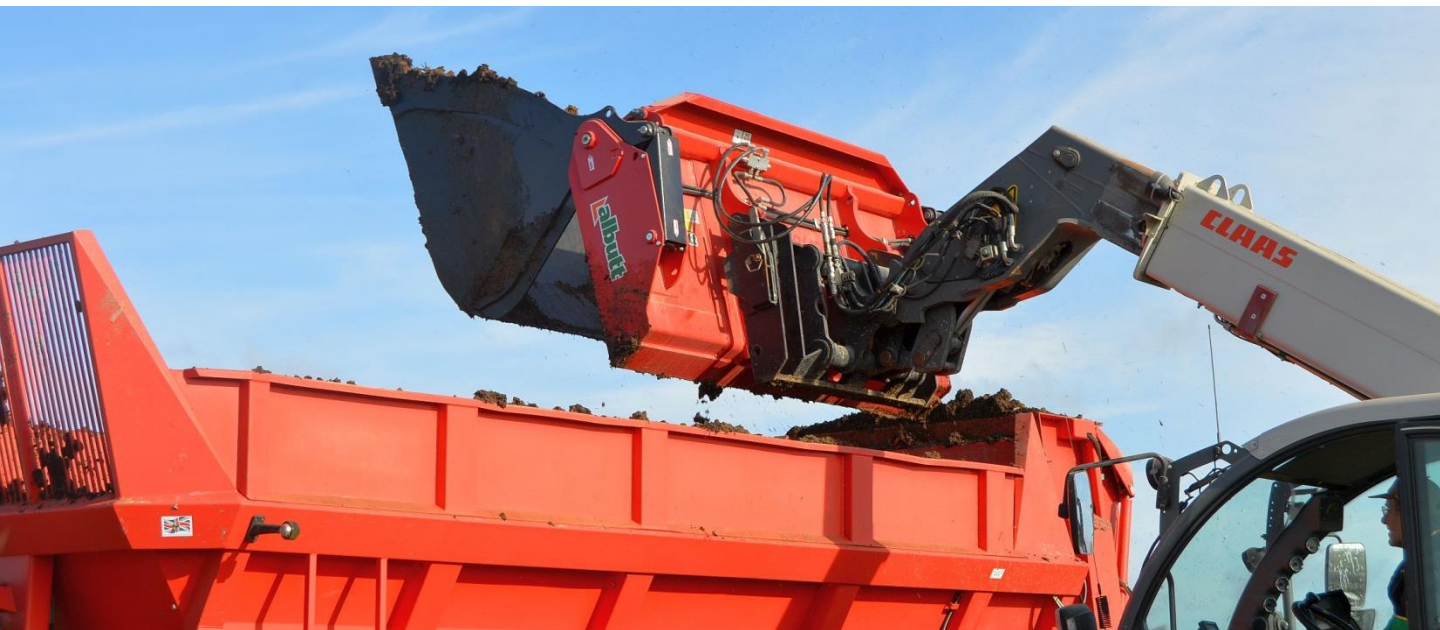


MAINTENANCE

- All pivots should be greased regularly.
- Check tightness of all bolts on a regular basis.
- Check all hydraulic items for signs of wear and leakage.

STORAGE

- Place the Clam Shell Bucket on a level site. After stopping the engine and applying the brake, disconnect the Clam Shell Bucket from the tractor. Clean the machine thoroughly and paint any bare metal. Apply grease to exposed ram rods when shear grab is not being used for a period longer than 7 days. Cover the machine with a waterproof cover.



PARTS DIAGRAMS

A089-80CS - 34/18 8 ft WIDE CLAM SHELL WASTE BUCKET - ASSEMBLY DRAWING.

DO NOT SCALE - IF IN DOUBT ASK.

REV	PART NUMBER	QTY	DESCRIPTION	QTY
1	100	1	CLAM SHELL (CLAM)	2
1	101	1	CLAM SHELL (BUCKET)	2
1	102	1	CLAM SHELL (BUCKET)	2
1	103	1	CLAM SHELL (BUCKET)	2
1	104	1	CLAM SHELL (BUCKET)	2
1	105	1	CLAM SHELL (BUCKET)	2
1	106	1	CLAM SHELL (BUCKET)	2
1	107	1	CLAM SHELL (BUCKET)	2
1	108	1	CLAM SHELL (BUCKET)	2
1	109	1	CLAM SHELL (BUCKET)	2
1	110	1	CLAM SHELL (BUCKET)	2
1	111	1	CLAM SHELL (BUCKET)	2
1	112	1	CLAM SHELL (BUCKET)	2
1	113	1	CLAM SHELL (BUCKET)	2
1	114	1	CLAM SHELL (BUCKET)	2
1	115	1	CLAM SHELL (BUCKET)	2

1 **2** **3** **4** **5** **6** **7** **8**

A **B** **C** **D** **E** **F** **G** **H**

WARNING STICKERS – CLAM SHELL BUCKET

