

**INSTRUCTION MANUAL  
AND  
PARTS CATALOGUE  
FOR**

**THE ALBUTT RANGE OF  
BAG FILLING BUCKETS**

**THIS MUST BE USED IN CONJUNCTION WITH ALBUTT'S  
GENERAL OPERATOR'S MANUAL**

# CONTENTS

Certificate.....3  
Safety Instructions.....4-8  
Parts Diagrams.....9-



**EU CERTIFICATE OF CONFORMITY**

CONFORMING TO EC Machinery Directive 2006/42 EC

**We:**

Albutt Limited  
Great Washbourne  
Tewkesbury  
Glos. UK  
GL20 7AR



declare in sole responsibility, that the product

**Type: Bag Filling Bucket**

to which this certificate applies, conforms to the basic safety  
and health requirements of the EC Machinery Directive 2006.42 EC,  
and the Transposed Harmonised Standards:

BS EN 1553 (2000)

A handwritten signature in black ink, appearing to read "A. D. Albutt". The signature is fluid and cursive.

Alistair Albutt

**Managing Director**

# SAFETY INSTRUCTIONS

**IMPORTANT – READ BEFORE USE**

This manual is provided to assist you in getting the best results from your machine and ensure that you do so safely. If you have any queries about the use of the machine contact your dealer before use. Please keep this manual for future reference.

## **1.1 FUNDAMENTAL PRECAUTIONS**

On delivery, your dealer gave you an explanation of the operation and maintenance of this Albutt attachment. Please read and understand these operating instructions before operating the attachment for the first time. It is essential that you observe all safety instructions. Incorrect use or mishandling of the machine can endanger:

Life and Limb of the operator, other persons or animals within the vicinity of the machine.

The machine and other material assets of the owner or third persons.

The performance of the machine.

Anyone who is involved in the commissioning, operation or maintenance of the snow plough must read and understand these instructions very carefully and observe them at all times.

**NEVER DISTRACT ANYONE WHO IS USING A MACHINE.**

## **1.2 AUTHORISED OPERATORS**

Youths under the age of 16 must not operate this attachment. The owner of the bag filler must provide the operator with the operating instructions and make sure they have read and understood them. Only then may the attachment be put into operation.

The owner must ensure that only authorised persons operate/work on this attachment. The owner is responsible for keeping any third persons or animals out of the working area of the machine.

**THE OPERATOR MUST BE FULLY TRAINED BEFORE USING THE ATTACHMENT IN CONJUNCTION WITH A TRACTOR LOADER OR TELEHANDLER  
A SAFE DISTANCE OF AT LEAST 10M MUST BE OBSERVED BY ANYONE WITHIN THE VICINITY OF THE ATTACHMENT.**

**We recommend that genuine Albutt bolt on brackets are used on these attachments. Any weld on brackets which adversely affect the structure of the product and may invalidate warranty.**

### 1.3 GENERAL SAFETY AND ACCIDENT PREVENTION REGULATIONS

Ensure the implement is correctly and securely attached to the operating vehicle using loader bracket mounting points.

Always use the correct mounting bracket and ensure that it is fitted by a trained and competent operator who has been approved by your Albutt dealer. It is recommended to use a bolted connection to attach the mounting bracket.

**NEVER** attach to a machine which would be rendered unstable when the implement is operated at its full capacity. Take note of the maximum load permissible on loader or linkage arms. Unloaded weight of the implement is 375 kg.

Take extra care when operating machinery on sloping ground. **NEVER** operate on ground where there is a risk of the machine becoming unstable.

When the unit is stationary always ensure it is lowered to the ground.

When detaching the implement from the machine always ensure that it is stable and safely positioned on a level surface.

The attaching and detaching of the implement to a loader must be carried out by only one operator. There should not be any other people in the vicinity of the implement or in the tractor.

Before operation make yourself familiar with all elements and controls of the machine as well as their functions.

Before operation inspect the area around you. Keep children away. All visitors and unauthorised persons should be kept well away from work area.

**Under NO circumstances** should anyone, authorised or otherwise attempt to use the Bag Filler as a means of personal transport. It is designed as a specialist bag filling attachment and is unsuitable for the safe transportation of passengers. **NEVER** allow anyone especially children to travel anywhere between the tractor and an implement.

**NEVER** use this implement to lift items other than free flowing material. This machine is designed to carry its filled volume. Any attempt to overload the machine will risk life and limb of the operator and immediately invalidate warranty.

To avoid personal injury keep hands and limbs well away from the moving parts.

**ENSURE** the attachment does not restrict the forward vision or important sightlines of the operator when mounted on the front of the loader.

**ENSURE** that the operator is aware of the large overhang when the implement is mounted on the front of the loader. **EXTREME CAUTION** must be taken when emerging onto the public roads.

Never unload on sloping ground or anywhere where the filled bags could be unstable. If stacking bags always ensure that the ground is level and stable and the stack is secure and adequately supported.

**NEVER** attempt to move this implement manually.

#### **1.4 GENERAL OPERATING INSTRUCTIONS**

If the implement is to be transported on a trailer then it should be securely attached using suitable restraints.

The valve on the Bag Filler should be pre set to 85bar. If its not, manually adjust it to 85bar. More than this can damage the Bag Filler. Less than this will effect how well the Bag Filler works.

After safely mounting the bag filler on the loader the attachment should be tipped forward getting the cutting edge parallel to the floor with the doors closed, lowered to contact the floor and driven into the heap of material. Crowd the bag filler back to fill with material. Crowd the attachment back level and lift to shoulder height.

Loader parked in a clear and safe position, handbrake applied and engine switched off. Take care not to walk underneath the raised bag filler. Hang the empty bag on the four hooks using the bag loops.

Return to cab, start engine, open doors to allow bag to fill. Restrict flow by partially closing doors if required.

Move loader with bag attached to unloading position, ensure bag is clear if floor.

Position filled bag in unloading position, lower to floor, watch bag loops to ensure they are slack, tilt bag filler forward slightly and reverse out. Ensure loops are clear of bag hangers.

## 1.5 HYDRAULIC SAFETY

**CAUTION** The hydraulic system is under high pressure.

Ensure that only high-pressure hoses are used to connect supply to the attachments hydraulic cylinder. Check hoses regularly and renew any that are damaged or worn.

Before working on the hydraulics lower the bag filler, release the pressure from the system and stop the tractor engine.

When connecting hydraulic rams make sure that the hydraulic hoses are coupled correctly. Pressure should be released from the system both on the tractor and on the implement side prior to coupling the hoses to the tractor hydraulics.

**CAUTION** Hydraulic oil forced out under pressure can break the skin and cause severe injury. In the event of a hydraulic oil leak stop the tractor flow immediately. **DO NOT PUT HANDS NEAR A LEAKING PIPE.**

## 1.6 MAINTENANCE

As a rule, disengage the driving system and stop the engine prior to carrying out maintenance, servicing, cleaning or repair work. **ALWAYS** remove the ignition key.

Prop the machine with appropriate supports before carrying out any maintenance work. The manufacturer will not be responsible for any damages or injuries caused by unauthorised repair, alterations or mishandling of the product.

Maintain product with care. Check periodically for damage that would affect the safe operation of the implement.

**ALWAYS** ensure all warning stickers are kept clean and in good condition.

Regularly check the bolts at the hinge points and tighten if necessary.

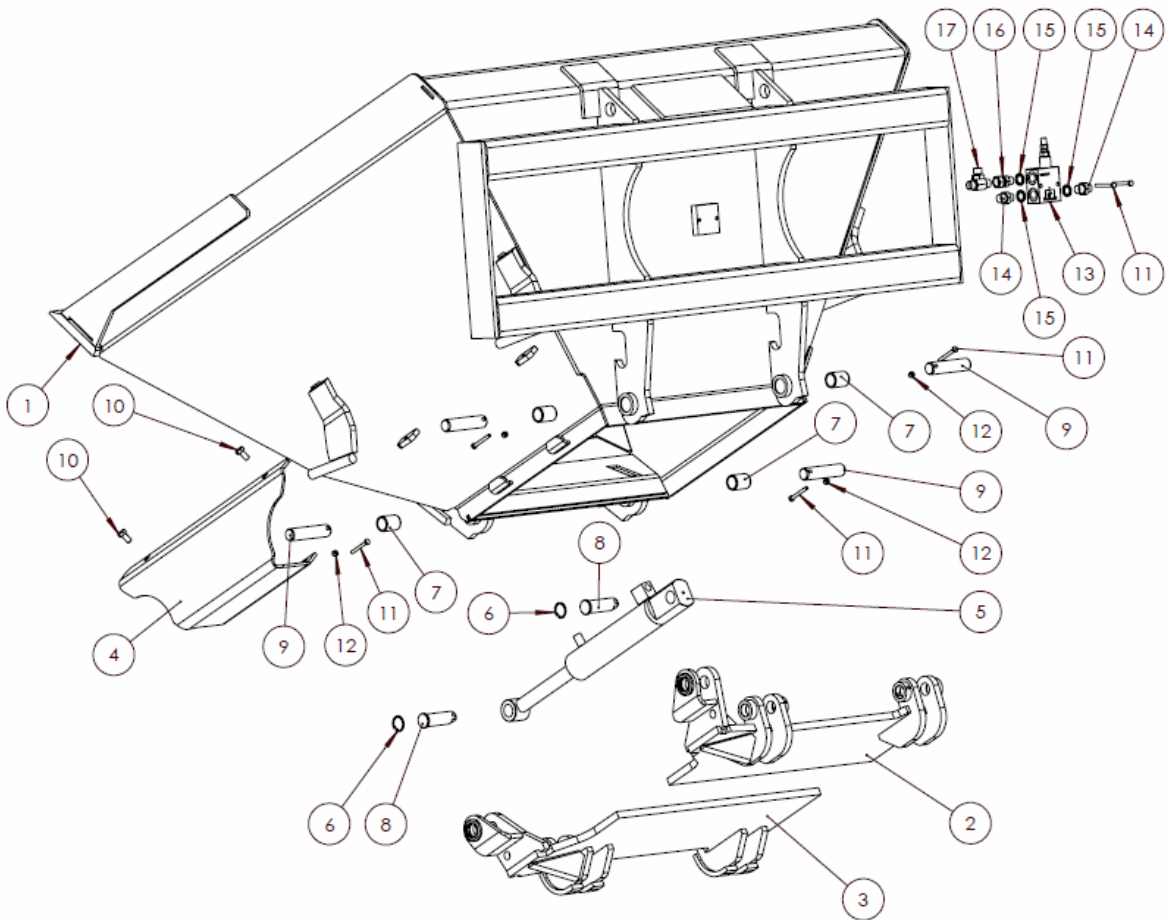
Regularly lubricate the hydraulic cylinder and hinges using clean grease.

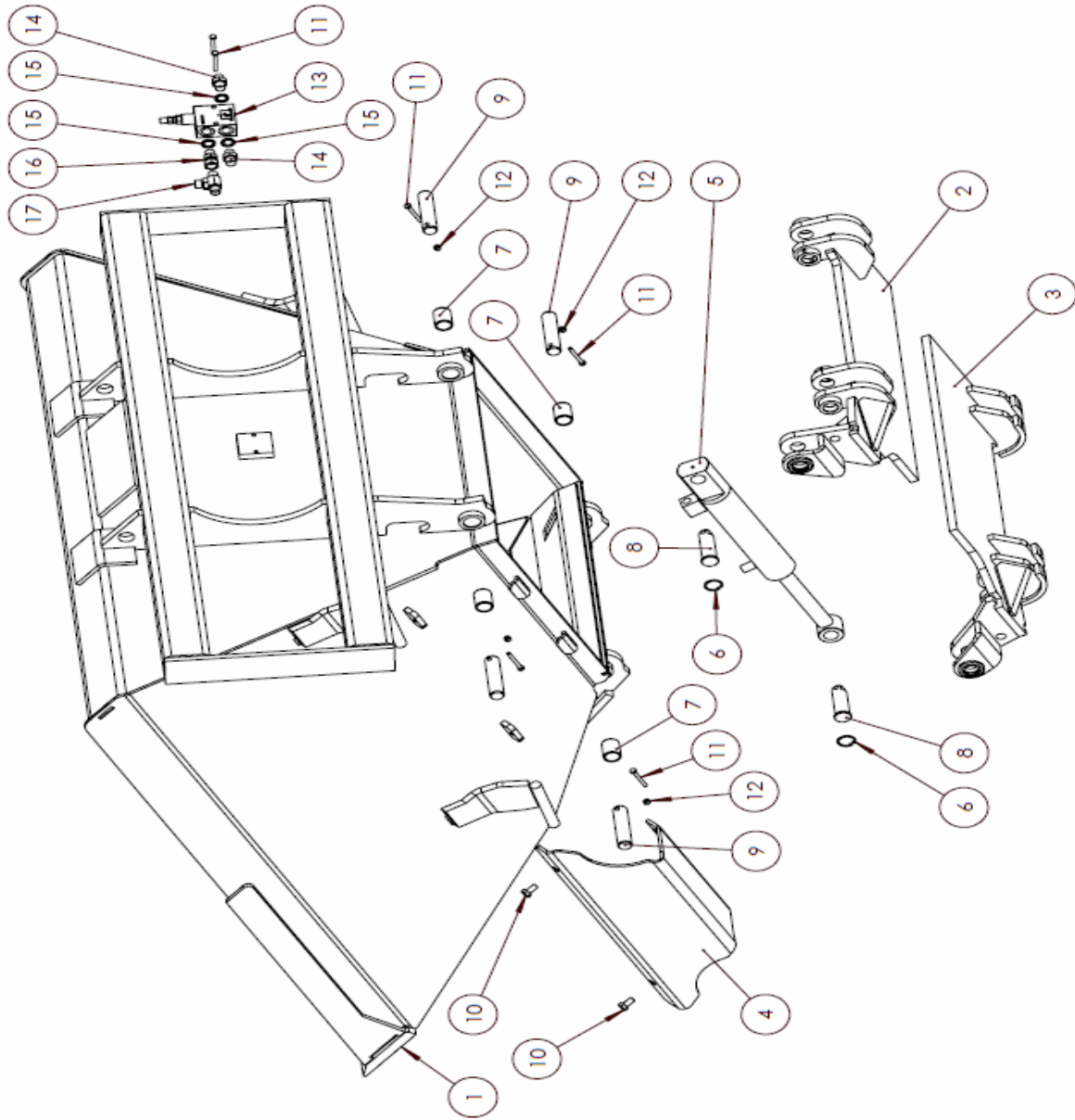
Cover the chromed area of the hydraulic cylinder with a layer of grease during prolonged periods of inactivity.





# PARTS DIAGRAMS



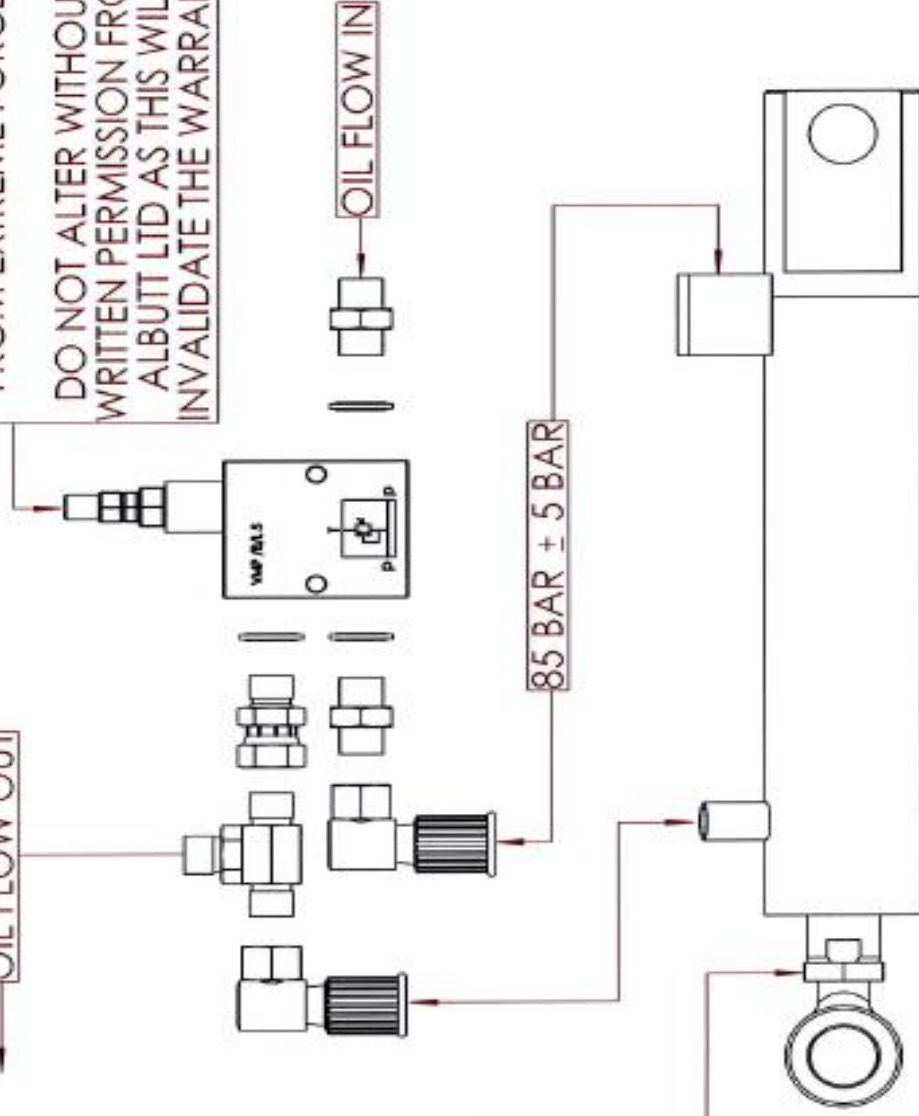

**BF600**

ITEM NO	PART NUMBER	DESCRIPTION	QTY
1	S8150-20-1330	BUCKET LIP 1.50x20 x 1330 Lg	1
2	01-2986-JD	UPPER TRAP DOOR	1
3	01-2986-LD	LOWER TRAP DOOR	1
4	01-1851-10L	BAG FILLING BUCKETS - MK2 RAM COVER	1
5	H-C-501	HYDRAULIC RAM	1
6	F5301-CC	INTERNAL CIRCLIP	2
7	01-SLB-3125-40	SELF LUBRICATING BUSH	4
8	01-25-4080W	RAM PIN	2
9	01-25-108P	DOOR HINGE PIN	4
10	FSM1020BL	M10 BOLT x 20 Lg	2
11	F3M650BL	M6 Bolt x 50 Lg	6
12	M6 NYLOCK NUT	M6 Nylock Nut	4
13	H-V-RV	3/8" BSP PRESSURE RELIEF VALVE	1
14	H-F-3/8-MM	3/8" BSP MALE-MALE STRAIGHT	2
15	H-W-3/8	3/8" BSP BONDED HYD WASHER	3
16	H-F-3/8-MF	3/8" BSP MALE-FEMALE STRAIGHT CONNECTOR	1
17	H-3/8-T-M	3/8" BSP HYD T-PIECE	1

**WARNING**  
 PRESSURE RELIEF VALVE  
 HAS BEEN FACTORY SET  
 TO PROTECT THE BUCKET  
 FROM EXTREME FORCES

DO NOT ALTER WITHOUT  
 WRITTEN PERMISSION FROM  
 ALBUTT LTD AS THIS WILL  
 INVALIDATE THE WARRANTY

OIL FLOW OUT



**IMPORTANT**  
 KEEP RAM ADJUSTMENT NUT  
 TIGHT AT ALL TIMES

ADJUST RAM AS REQUIRED  
 TO ENSURE DOORS GO TO  
 THE CLOSED POSITION AT THE  
 END OF THE RAM STROKE

**IMPORTANT**  
 DO NOT OVER EXTEND RAM