



2020 PRODUCT
BROCHURE



Albutt is a wholly owned family business specialising in manufacturing high specification attachments for the agricultural, waste, construction and forestry industries.

Founded over 50 years ago by Robert Albutt, the company's roots are in farming with 4 generations of the Albutt family involved in agriculture. Now employing over 50 members of staff and operating from two manufacturing facilities, Albutt Attachments have grown to become the leading name in the worldwide attachment market with products being shipped across the globe on a weekly basis.

The company's ethos is to build up to a quality rather than down to a price, resulting in the Albutt brand becoming the 'heavy duty' option in this specialised industry. This is reflected in the high percentage usage of high tensile steels 'Hardox' & 'Domex' within the Albutt product range.

To maintain service levels of it's market leading product, Albutt operates a continual investment policy which over the last year has seen a second factory open and a brand new paint and surface preparation facility installed. The policy allows Albutt to keep pace with an ever changing market place and continue to produce class leading products to a number of industries and applications.

The Albutt Sales Team has a combined experience of over 100 years within the attachment market, backed by second to none design, production, administration and logistic departments, you can rest assured that Albutt is the right choice for your attachment requirements.

Connections to Agriculture



WHY CHOOSE ALBUTT

- Recognised global leading manufacturer of Agricultural and Waste attachments
- Two manufacturing plants; Tewkesbury and Evesham – 50,000 sq ft
- Modern production machinery and facilities with continual investment policy
- Accredited manufacturer for genuine Hardox and Strenx
- Supplier to some of the industry's leading OEM's
- Modern delivery truck fleet
- Dedicated Sales team with parts and aftersales back up
- Design team working with latest Solidworks software
- Renowned for being market leader for strength and design
- Worldwide Dealership network, from Australia and New Zealand to USA and South America
- Over 50 years' experience in the attachment industry
- New paint and surface preparation facility installed in 2016
- Sales, Design, Purchasing, Admin, Logistic, and Production teams – over 50 employees
- Boardroom and meeting facilities
- Overhead crane system with jig and rotator machines
- Over 1200 approved dealers and distributors



ALBUTT CONTACTS



Alistair Albutt
Managing Director
Sales

T: 01242 622 903
M: 07860 667 585
E: alistair@albutt.co.uk



Tom Worthington
General Manager

T: 01242 622 990
E: tom@albutt.co.uk



Dan Cross
Business Development
Sales

T: 01242 621 993
M: 07720 087 264
E: dan@albutt.co.uk



Keith Hodges
Sales Administration
Parts Sales

T: 01242 622 901
E: Keith@albutt.co.uk



Jane Gill
Office Manager

T: 01242 622 900
E: jane@albutt.co.uk



Mark Holder
Technical Manager

T: 01242 622 908
E: mark@albutt.co.uk



Will Underwood
Design Engineer

T: 01242 620 252
E: will.underwood@albutt.co.uk



David Guy
Design Engineer

T: 01242 622 992
E: david.guy@albutt.co.uk



Stuart Freer
Production Manager

T: 01242 621 999
E: stuart.freer@albutt.co.uk



Lewis Ridley
Buyer

T: 01242 622 906
E: lewis.ridley@albutt.co.uk

When ordering, please provide the following;

1. The Part Number of the Albutt attachment you require
2. The Make and Model of the loading shovel, telehandler, loader or skidsteer the attachment is to be used with
3. The Type of Carriage fitted to the machine
4. Discuss your requirement with our sales office and confirm by fax or email

Dealer Loyalty

Albutt products are only available through our UK and Worldwide network of dealers. Every product is traceable through our supplying dealer and is accompanied by our industry leading product support package.

Compliance

All Albutt products are CE marked and are supplied with a certificate of conformity complying with current EEC Directives. Albutt products are marked showing SWL, COG, weight & capacity. Under PUWER 98 regulations all Albutt products are supplied with full operating instructions.





Overview

The Albutt range of Grain Buckets have been expertly designed on over 50 years of attachment building experience. A host of standout features truly make the Albutt Grain Buckets market leaders for specification, design and build quality. With brackets designed specifically for the machine and headstock type required, the grain bucket range is able to achieve the maximum crowd and dump angles available.

Features

- Brackets mounted on support straps for even spread of load
- Under floor strapping plates 150 x 15mm
- Optional bolt on cutting edge
- Available with plastic cutting edge for wooden floors; see pictures



Models

| Model | Width | Capacity | Height | Depth | Weight |
|-----------|--------------|---------------------------------|--------|--------|--------|
| A162-90GB | 9' / 2.74m | 162 cu/ft / 4.60m ³ | 1.425m | 1.728m | 1041kg |
| A141-90GB | 9' / 2.74m | 141 cu/ft / 4.00m ³ | 1.337m | 1.621m | 890kg |
| A129-90GB | 9' / 2.74m | 129 cu/ft / 3.66m ³ | 1.314m | 1.471m | 761kg |
| A152-86GB | 8'6" / 2.59m | 152 cu/ft / 4.30m ³ | 1.425m | 1.728m | 1005kg |
| A133-86GB | 8'6" / 2.59m | 133 cu/ft / 3.77m ³ | 1.337m | 1.621m | 820kg |
| A120-86GB | 8'6" / 2.59m | 120 cu/ft / 3.40m ³ | 1.314m | 1.471m | 695kg |
| A112-86GB | 8'6" / 2.59m | 112 cu/ft / 3.20m ³ | 1.233m | 1.472m | 705kg |
| A100-86GB | 8'6" / 2.59m | 100 cu/ft / 2.85m ³ | 1.181m | 1.357m | 667kg |
| A197-96GB | 9'6" / 2.89m | 197 cu/ft / 5.68m ³ | 1.575m | 2.073m | 1296kg |
| A171-96GB | 9'6" / 2.89m | 171 cu/ft / 4.84m ³ | 1.425m | 1.728m | 1098kg |
| A190-90GB | 9' / 2.74m | 190 cu/ft / 5.38 m ³ | 1.575m | 2.073m | 1258kg |
| A144-80GB | 8' / 2.44m | 144 cu/ft / 4.10m ³ | 1.425m | 1.728m | 969kg |
| A125-80GB | 8' / 2.44m | 125 cu/ft / 3.54m ³ | 1.337m | 1.621m | 766kg |
| A115-80GB | 8' / 2.44m | 115 cu/ft / 3.25m ³ | 1.314m | 1.471m | 671kg |
| A105-80GB | 8' / 2.44m | 105 cu/ft / 2.97m ³ | 1.233m | 1.472m | 647kg |
| A095-80GB | 8' / 2.44m | 95 cu/ft / 2.70m ³ | 1.181m | 1.357m | 614kg |
| A075-80GB | 8' / 2.44m | 75 cu/ft / 2.10m ³ | 1.054m | 1.227m | 546kg |
| A135-76GB | 7'6" / 2.29m | 135 cu/ft / 3.80m ³ | 1.425m | 1.728m | 935kg |
| A095-76GB | 7'6" / 2.29m | 95 cu/ft / 2.70m ³ | 1.233m | 1.472m | 632kg |
| A089-76GB | 7'6" / 2.29m | 89 cu/ft / 2.50m ³ | 1.181m | 1.357m | 592kg |
| A070-76GB | 7'6" / 2.29m | 70 cu/ft / 2.00m ³ | 1.054m | 1.227m | 523kg |



Overview

The Albutt range of Buckets have been expertly designed on over 50 years of attachment building experience. A host of standout features truly make the Albutt general purpose bucket the market leader in this competitive industry. Brackets are mounted onto straps to spread the load on the bucket shell. All buckets feature a boron 500 welded in toe plate, large corner gussets, rolled back and boron 500 corner heel pads.

8' to 7'6" Wide Models

| Model | Width | Capacity | Height | Depth | Weight |
|---------|--------------|-------------------------------|--------|--------|--------|
| A075-80 | 8' / 2.44m | 75 cu/ft / 2.10m ³ | 1.054m | 1.227m | 546kg |
| A063-80 | 8' / 2.44m | 63 cu/ft / 1.78m ³ | 0.960m | 1.090m | 505kg |
| A056-80 | 8' / 2.44m | 56 cu/ft / 1.60m ³ | 0.901m | 1.030m | 426kg |
| A043-80 | 8' / 2.44m | 43 cu/ft / 1.20m ³ | 0.784m | 0.857m | 374kg |
| A032-80 | 8' / 2.44m | 32 cu/ft / 0.90m ³ | 0.678m | 0.702m | 330kg |
| A070-76 | 7'6" / 2.29m | 70 cu/ft / 2.00m ³ | 1.054m | 1.227m | 523kg |
| A060-76 | 7'6" / 2.29m | 60 cu/ft / 1.70m ³ | 0.960m | 1.090m | 485kg |
| A053-76 | 7'6" / 2.29m | 53 cu/ft / 1.50m ³ | 0.901m | 1.030m | 409kg |
| A040-76 | 7'6" / 2.29m | 40 cu/ft / 1.13m ³ | 0.784m | 0.857m | 358kg |
| A030-76 | 7'6" / 2.29m | 30 cu/ft / 0.85m ³ | 0.678m | 0.702m | 300kg |

Features

- Leading edge & corner pads – 500 Brinell for long life
- Corner gussets – 450mm x 90mm x 5mm
- Brackets mounted on support plates for even load distribution
- Under floor strengthening straps
- Side stiffeners full height of bucket
- Brackets for telehandler or loader included.
- Heavy duty hook profiles
- Hooks full depth of bucket

7' to 4' Wide Models

| Model | Width | Capacity | Height | Depth | Weight |
|---------|--------------|-------------------------------|--------|--------|--------|
| A066-70 | 7' / 2.14m | 66 cu/ft / 1.90m ³ | 1.054m | 1.227m | 499kg |
| A056-70 | 7' / 2.14m | 56 cu/ft / 1.60m ³ | 0.960m | 1.090m | 462kg |
| A049-70 | 7' / 2.14m | 49 cu/ft / 1.40m ³ | 0.901m | 1.030m | 390kg |
| A044-70 | 7' / 2.14m | 44 cu/ft / 1.25m ³ | 0.850m | 1.040m | 390kg |
| A037-70 | 7' / 2.14m | 37 cu/ft / 1.05m ³ | 0.784m | 0.857m | 342kg |
| A028-70 | 7' / 2.14m | 28 cu/ft / 0.80m ³ | 0.678m | 0.702m | 290kg |
| A042-66 | 6'6" / 2.00m | 40 cu/ft / 1.13m ³ | 0.850m | 1.040m | 370kg |
| A035-66 | 6'6" / 2.00m | 35 cu/ft / 0.99m ³ | 0.786m | 0.940m | 320kg |
| A026-66 | 6'6" / 2.00m | 26 cu/ft / 0.74m ³ | 0.700m | 0.786m | 270kg |
| A038-60 | 6' / 1.83m | 37 cu/ft / 1.05m ³ | 0.850m | 1.040m | 350kg |
| A032-60 | 6' / 1.83m | 32 cu/ft / 0.90m ³ | 0.786m | 0.940m | 300kg |
| A024-60 | 6' / 1.83m | 24 cu/ft / 0.68m ³ | 0.700m | 0.786m | 250kg |
| A026-50 | 5' / 1.52m | 26 cu/ft / 0.75m ³ | 0.786m | 0.940m | 260kg |
| A018-47 | 4'7" / 1.40m | 18 cu/ft / 0.51m ³ | 0.700m | 0.786m | 230kg |
| A016-40 | 4' / 1.22m | 16 cu/ft / 0.45m ³ | 0.700m | 0.786m | 210kg |



Overview

OPTIMUS-8 is the highest specification bucket range available from Albutt Attachments. Designed to withstand the toughest of environments, the OPTIMUS-8 range has a host of features specifically aimed at providing a longer operating life compared to other buckets currently available in the UK. If reliability and strength are vital to your operation, make sure you ask your dealer about Albutt OPTIMUS-8.

9' to 8'6" wide Models

| Model | Width | Capacity | Height | Depth | Weight |
|-----------|-------|--------------------|---------|---------|---------|
| A197-96HD | 9'6" | 5.68m ³ | 1,575mm | 2,073mm | 1,671kg |
| A171-96HD | 9'6" | 4.84m ³ | 1,425mm | 1,728mm | 1,592kg |
| A190-90HD | 9' | 5.38m ³ | 1,575mm | 2,073mm | 1,620kg |
| A162-90HD | 9' | 4.60m ³ | 1,425mm | 1,728mm | 1,530kg |
| A141-90HD | 9' | 4.00m ³ | 1,337mm | 1,621mm | 1,300kg |
| A129-90HD | 9' | 3.66m ³ | 1,314mm | 1,471mm | 1,120kg |
| A063-90HD | 9' | 1.78m ³ | 900mm | 1,092mm | 720kg |
| A179-86HD | 8'6" | 5.00m ³ | 1,575mm | 2,073mm | 1,570kg |
| A152-86HD | 8'6" | 4.30m ³ | 1,425mm | 1,728mm | 1,480kg |
| A133-86HD | 8'6" | 3.77m ³ | 1,337mm | 1,621mm | 1,205kg |
| A120-86HD | 8'6" | 3.40m ³ | 1,314mm | 1,471mm | 1,045kg |
| A112-86HD | 8'6" | 3.20m ³ | 1,233mm | 1,472mm | 1,035kg |
| A060-86HD | 8'6" | 1.70m ³ | 900mm | 1,092mm | 620kg |

OPTIMUS 8 HEAVY DUTY BUCKETS

Market Leading Features

- 8mm bucket shell & sides
- HB500 long life leading edge and underside heel pads
- Heavy duty, full length side gussets
- 12mm thick side stiffeners
- Brackets mounted onto support straps for even load distribution
- HB500 bolt on reversible toe plate; Optional
- Pressed rolled bucket back
- Vertical support gussets – A095 buckets and larger

8' to 7' wide Models

| Model | Width | Capacity | Height | Depth | Weight |
|-----------|-------|--------------------|---------|---------|--------|
| A115-80HD | 8' | 3.25m ³ | 1,314mm | 1,471mm | 990kg |
| A105-80HD | 8' | 2.97m ³ | 1,233mm | 1,472mm | 960kg |
| A095-80HD | 8' | 2.70m ³ | 1,181mm | 1,357mm | 870kg |
| A075-80HD | 8' | 2.10m ³ | 1,054mm | 1,227mm | 688kg |
| A063-80HD | 8' | 1.78m ³ | 960mm | 1,090mm | 635kg |
| A056-80HD | 8' | 1.60m ³ | 901mm | 1,030mm | 587kg |
| A043-80HD | 8' | 1.20m ³ | 784mm | 857mm | 545kg |
| A070-76HD | 7'6" | 2.00m ³ | 1,054mm | 1,227mm | 660kg |
| A060-76HD | 7'6" | 1.70m ³ | 960mm | 1,090mm | 610kg |
| A053-76HD | 7'6" | 1.50m ³ | 901mm | 1,030mm | 562kg |
| A040-76HD | 7'6" | 1.13m ³ | 784mm | 857mm | 525kg |
| A066-70HD | 7' | 1.90m ³ | 1,054mm | 1,227mm | 643kg |
| A056-70HD | 7' | 1.60m ³ | 960mm | 1,090mm | 593kg |
| A049-70HD | 7' | 1.40m ³ | 901mm | 1,030mm | 545kg |
| A037-70HD | 7' | 1.05m ³ | 784mm | 857mm | 470kg |

HIGH TIP BUCKETS – GRAIN

A098-86HT



A042-70HT



Features

- Fitted with long life cutting edge 500 Brinell hardened boron steel
- Cradle manufactured from Hardox 500
- Twin hydraulic rams
- Bucket cushioning
- Clean shell bucket
- Remote greasing points - A092-80HT models and larger
- Bolt on protective ram covers
- Optional bolt on reversible toe plate
- Optional spill guard

| Model | Width | Capacity | Weight |
|-----------|--------------|--------------------------------|--------|
| A130-90HT | 9' / 2.74m | 130 cu/ft / 3.68m ³ | 1400kg |
| A104-90HT | 9' / 2.74m | 104 cu/ft / 2.95m ³ | 1300kg |
| A123-86HT | 8'6" / 2.59m | 123 cu/ft / 3.50m ³ | 1330kg |
| A098-86HT | 8'6" / 2.59m | 98 cu/ft / 2.77m ³ | 1220kg |
| A116-80HT | 8' / 2.44m | 116 cu/ft / 3.28m ³ | 1250kg |
| A092-80HT | 8' / 2.44m | 92 cu/ft / 2.60m ³ | 1000kg |
| A070-76HT | 7'6" / 2.29m | 70 cu/ft / 2.00m ³ | 750kg |
| A050-76HT | 7'6" / 2.29m | 50 cu/ft / 1.50m ³ | 670kg |
| A042-70HT | 7' / 2.13m | 42 cu/ft / 1.13m ³ | 510kg |
| A035-70HT | 7' / 2.13m | 35 cu/ft / 0.99m ³ | 470kg |
| A025-66HT | 6'6" / 2.00m | 25 cu/ft / 0.70m ³ | 390kg |

HIGH TIP BUCKETS – MANURE/WASTE

Features

- Fitted with long life cutting edge 500 Brinell hardened boron steel
- Cradle manufactured from Hardox 500
- Twin hydraulic rams
- Bucket cushioning
- STRENX high tensile steel bucket shell
- Bolt on protective ram covers
- Remote greasing points
- Bolt on reversible toe plate – standard
- Single ram models available for handling sludgecake – ask for details

| Model | Width | Capacity | Weight |
|--------------|--------------|--------------------------------|--------|
| WA130-90HTBL | 9' / 2.74m | 130 cu/ft / 3.68m ³ | 1620kg |
| WA104-90HTBL | 9' / 2.74m | 104 cu/ft / 2.95m ³ | 1565kg |
| WA123-86HTBL | 8'6" / 2.59m | 123 cu/ft / 3.50m ³ | 1540kg |
| WA098-86HTBL | 8'6" / 2.59m | 98 cu/ft / 2.77m ³ | 1320kg |
| WA116-80HTBL | 8' / 2.44m | 116 cu/ft / 3.28m ³ | 1525kg |
| WA092-80HTBL | 8' / 2.44m | 92 cu/ft / 2.60m ³ | 1300kg |
| WA070-76HTBL | 7'6" / 2.29m | 70 cu/ft / 2.00m ³ | 975kg |
| WA050-76HTBL | 7'6" / 2.29m | 50 cu/ft / 1.50m ³ | 870kg |
| WA042-70HTBL | 7' / 2.13m | 42 cu/ft / 1.13m ³ | 650kg |
| WA035-70HTBL | 7' / 2.13m | 35 cu/ft / 0.99m ³ | 610kg |
| WA025-66HTBL | 6'6" / 2.00m | 25 cu/ft / 0.70m ³ | 495kg |



WA070-76HTBL



WA042-70HTBL



Overview

Albutt bucket grabs are a versatile attachment for material handling in agriculture. Offering the features of a bucket and fork grab in one attachment. The bucket features bolted sides which can be removed for muck handling etc. The wide opening grab features Hardox high tensile steel tines which are welded into a thick walled tube, providing high strength and long term reliability. The bucket edge can touch a vertical face with the grab open, allowing corners in buildings to be cleared. This new attachment is suitable for use with telehandlers and loaders.

Features

- Genuine Hardox grab tines
- Open and close grab stops; protect pins and cylinders
- Removable side panels
- Rolled bucket shell
- Wide opening grab
- High capacity hydraulic cylinders
- Brackets included to suit your Telehandler, Loader or Wheeled Shovel
- HB500 welded in leading edge
- 10mm wall CHS tine holder

Models

| Model | Width | Capacity | Height | Depth | Weight |
|-------------|--------------|-------------------------------|--------|--------|--------|
| A085-80BGHX | 8' / 2.44m | 85 cu/ft / 2.35m ³ | 950mm | 1350mm | 1065kg |
| A059-80BGHX | 8' / 2.44m | 58 cu/ft / 1.64m ³ | 786mm | 1010mm | 810kg |
| A081-76BGHX | 7'6" / 2.30m | 80 cu/ft / 2.20m ³ | 950mm | 1350mm | 1000kg |
| A055-76BGHX | 7'6" / 2.30m | 54 cu/ft / 1.53m ³ | 786mm | 1010mm | 780kg |
| A051-70BGHX | 7' / 2.13m | 50 cu/ft / 1.42m ³ | 786mm | 1010mm | 750kg |
| A048-66BGHX | 6'6" / 2.00m | 47 cu/ft / 1.30m ³ | 786mm | 1010mm | 700kg |
| A043-60BGHX | 6' / 1.83m | 43 cu/ft / 1.22m ³ | 786mm | 1010mm | 680kg |



Overview

The Albutt 4 in 1 Bucket incorporates Hardox steel to provide a multi purpose attachment suitable for a variety of applications. The attachments can be use as a bucket, clamp, grader and digger. Serrated edges providing extra grip when clamping. Ideal for use on Telehandlers, Tractor Loaders or Skidsteers the Albutt 4 in 1 bucket utilises high capacity hydraulic cylinders and high grade pins for long operating life.

Features

- HB500 Brinell cutting edge
- Hardox side plates
- Serrated edges
- 3 cutting edges
- Brackets included to suit your machine
- Can be used as a bucket, clamp, digger or grader
- High grade pins
- High capacity hydraulic cylinders

Models

| Model | Width | Capacity | Weight |
|-------------|---------------|-------------------------------|--------|
| A028-80CS | 8' / 2.44m | 28 cu/ft / 0.75m ³ | 720kg |
| A026-76CS | 7'6" / 2.30m | 26 cu/ft / 0.74m ³ | 695kg |
| A020-72CS | 7'2" / 2.20m | 20 cu/ft / 0.56m ³ | 440kg |
| A018-66CS | 6'6" / 2.00m | 18 cu/ft / 0.51m ³ | 410kg |
| A015-57CS | 5'7" / 1.70m | 15 cu/ft / 0.42m ³ | 380kg |
| A011-53CS* | 5'3" / 1.61m | 11 cu/ft / 0.28m ³ | 300kg |
| A009-411CS* | 4'11" / 1.50m | 9 cu/ft / 0.25m ³ | 260kg |

*Suitable for Skidsteers only



A089-80CS

Overview

The Albutt Clam Shell Bucket provides an alternate means of loading material such as manure, grain and woodchip. Particularly for loading chicken manure, the Clam Shell design has major benefits as the operating rams are situated vertically, away from the floor of the bucket. This eliminates the danger of manure clogging the ram causing pin breakages and failures. By the floor opening, compared to a tipping action, less height is required to unload, meaning the Clam Shell Bucket excels being used on Loading Shovels.

Features

- Strenx high tensile steel shell
- Hardox wear parts
- HB500 Brinell leading edges
- HB500 bolt on reversible toe plate – fitted as standard
- Bolt on ram covers for spill protection
- Spill guard
- Suitable for manure, grain, woodchip & compost
- Over centre valve locks hydraulic flow

Models

| Model | Width | Capacity | Height | Depth | Weight |
|-----------|--------------|-------------------------------|--------|--------|--------|
| A089-80CS | 8' / 2.44m | 89 cu/ft / 2.50m ³ | 1396mm | 1041mm | 1150kg |
| A070-76CS | 7'6" / 2.29m | 70 cu/ft / 2.00m ³ | 1116mm | 832mm | 1070kg |



Overview

The Albutt range of JCB Teletruk buckets have been designed to provide a heavy duty, cost effective solution to operating in a number of industries. The ranges consist of our standard GP bucket, our high tip bucket and our Bucket Grab – all suitable for us in either Agricultural or Waste applications.

Features

- Specifically designed for the JCB Teletruk
- Increase your height and forward reach with an Albutt High Tip Bucket
- Heavy duty grab range utilises high capacity rams, removable side panels, open and close grab stops and high grade pins
- Optional machine fittings – Class 2, Class 3, or Changeeze

Rehandling Buckets

| Model | Width | Capacity | Height | Depth | Weight |
|------------|--------------|--------------------------------|--------|-------|--------|
| A037-60TLT | 6' / 1.83m | 35 cu/ft / 1.00 m ³ | 840mm | 965mm | 340kg |
| A025-50TLT | 5' / 1.52m | 25 cu/ft / 0.70 m ³ | 760mm | 955mm | 260kg |
| A021-43TLT | 4'3" / 1.30m | 21 cu/ft / 0.60 m ³ | 760mm | 955mm | 240kg |

Bucket Grab

| Model | Width | Capacity | Height | Depth | Weight |
|-----------|--------------|-------------------------------|--------|---------|--------|
| A038-51BG | 5'1" / 1.55m | 28 cu/ft / 1.08m ³ | 786mm | 1.010mm | 540kg |

High Tip Bucket

| Model | Width | Capacity | Height | Depth | Weight |
|-----------|-------------|--------------------------------|--------|----------|--------|
| A028-50HT | 5' / 1.52 m | 28 cu/ft / 0.80 m ³ | 920 mm | 1,050 mm | 480kg |



Overview

The Albutt Bag Filling Bucket is the ultimate time saving attachment for use in busy yards. It allows the quick fill of tote bags with heavy free flowing material such as sand, aggregate, gravel etc. To be used with any Telehandler or loader, trailers and vans can also be filled with precise control. The design means that when bags are filled they can be accurately stacked or loaded onto trailers and trucks.

Features

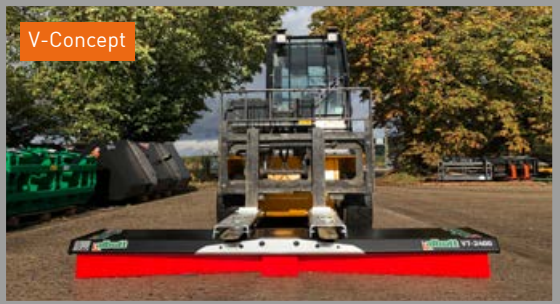
- HB500 Brinell cutting edge
- 0.50m³, 0.60m³ and 1.00m³ capacity models
- Recommended to be used with Albutt's Bolt on Brackets system – see page 111
- Fast filling accurately controlled by two trap doors (controlled from the cab)
- 40 bags can be filled per hour
- Heavy duty design with direct acting hydraulic door control with over pressure protection
- Hydraulic cylinder covered
- Nylon bushes on door pivots eliminates requirements for grease points
- New bolt on arm option for full sleeve bags – ask our sales team for details

Models

| Model | Capacity | Width | Weight |
|--------|--------------------|--------|--------|
| BF500 | 0.50m ³ | 1220mm | 370kg |
| BF600 | 0.60m ³ | 1330mm | 390kg |
| BF1000 | 1.00m ³ | 1600mm | 440kg |



Bucket Brushes



V-Concept

Bucket Brush Sweepers

- Hydraulic drive; max flow 60 lpm / max pressure 207bar*
- Supplied with quick hitch mounting brackets and hydraulic hoses
- Galvanised canopy
- Poly brushes
- Minimum bucket height required – 780mm
- Can be stored upright

*Available with an optional relief valve if your machine exceeds these values

V-Concept Sweepers

- Innovative patented 'V' design
- Pallet tine mounted as standard
- Optional anti-scattering kit
- Suitable for a variety of applications
- Locks behind fork heel
- Cost effective solution for managing site areas
- Cheap to run and maintain

Bucket Brushes

| Model | To fit Bucket Width |
|-------|---------------------------------|
| SB40 | 5'9" (1750mm) to 6'6" (1980mm) |
| SB60 | 6'6" (1980mm) to 7'3" (2210mm) |
| SB80 | 7'3" (2210mm) to 7'10" (2387mm) |
| SB100 | 7'10" (2387mm) to 8'8" (2640mm) |

V-Concept Sweepers

| Model | Width | Bristles | Bristle Depth |
|---------|--------|----------------------------------------|---------------|
| V7-1800 | 1800mm | 3 x straight / 2 x 'V' / 2 x mini rows | 230mm |
| V7-2400 | 2400mm | 3 x straight / 2 x 'V' / 2 x mini rows | 230mm |



Overview

The Albutt range of Heavy Duty Buck Rakes are designed for use with high horsepower tractors or loading shovels. Tractor horsepower requirement is 160hp rear linkage and 180hp front linkage. Front linkage rating requirement is 5 tonnes.

The range is renowned for being the global market leader with many repeat orders from Australia, New Zealand, USA and Canada. An unrivalled specification includes a 200 x 100mm tine holder, high grade mesh gate and high capacity hydraulic cylinders.

Features

- 1650mm genuine Hardox base tines
- Double side tines
- 200 x 100mm tine holder
- High flow divider valve to prevent gate twists on uneven loads
- 75mm ram bore size
- 35mm diameter ram pivot pins
- 5 hole top link positions
- Angled tine holder top to prevent silage build up
- Leant forward spill frame on gate
- High grade mesh gate gives strength but great visibility
- Double profile gate mounting prevents arms bending
- 60mm diameter main pivot pin

Models

| Model | Width | Capacity | Tines | Weight |
|----------|-------------|--------------------------------|-------|--------|
| B808PPHX | 8' / 2.44m | 169 cu/ft / 4.80m ³ | 10 | 1220kg |
| B809PPHX | 9' / 2.74m | 191 cu/ft / 5.43m ³ | 11 | 1320kg |
| B810PPHX | 10' / 3.05m | 215 cu/ft / 6.08m ³ | 12 | 1400kg |
| B812PPHX | 12' / 3.66m | 240 cu/ft / 6.79m ³ | 14 | 1570kg |



Overview

The Albutt range of Buck Rakes are designed for to provide a strong, reliable partner for your clamp tractor or loading shovel. The new high capacity gate is manufactured from high grade weldmesh, giving ultimate strength whilst offering great visibility. Pin size, tine holder thickness, ram size and overall design are unrivalled in the Buck Rake market and subsequently they are used all over the world from Australia and New Zealand to USA and Canada. All models comes as standard with double side tines.

Features

- 1400mm spoon end tines
- 60mm diameter main pivot pin
- Double side tines
- High flow divider valve to prevent gate twists
- 3 position top link holes
- Top of tine holder angled to prevent silage build up
- 100 x 100 x 10mm tine holder
- Double profile gate mounting to prevent arms bending
- Leant forward spill frame on gate
- Suitable for Tractor 3 point linkage or Telehandler brackets (optional extra)
- High grade EXP mesh gate

Models

| Model | Width | Capacity | Tines | Weight |
|--------|-------------|--------------------------------|-------|--------|
| B808PP | 8' / 2.44m | 125 cu/ft / 3.53m ³ | 15 | 980kg |
| B809PP | 9' / 2.74m | 140 cu/ft / 3.96m ³ | 16 | 1020kg |
| B810PP | 10' / 3.05m | 156 cu/ft / 4.41m ³ | 18 | 1060kg |



Overview

The Albutt Folding Fork is designed to maximise the potential of your clamp machine. By featuring wings that close during road transport, the Folding Fork can spread its wings for clamp use and such considerably increase its capacity. A market leading specification includes a 200 x 100mm tine holder, 1650mm genuine Hardox base tines, a shock protecting hydraulic accumulator as standard and use of Strenx and Hardox in key stress areas. Trusted the world over, the Fork is regularly sent abroad and used by major OEM's on their demonstration machines.

Features

- Folding wing design
- 1650mm long genuine Hardox base tines
- Strenx fork back
- Double side tines
- Hydraulic accumulator for shock protection
- Wings lock when in transport position
- Wings operate simultaneously
- Complete with quick hitch brackets
- 200 x 100mm tine holder
- Suitable for use with loading shovels
- Tine guard and lighting kit; optional
- Used globally
- More efficient use of clamp machine

Models

| Model | Open Width | Closed Width | Capacity | Height | No. Tines | Weight |
|--------|-------------|--------------|--------------------|--------|-----------|--------|
| B912HX | 12' / 3.70m | 9'9" / 2.97m | 6.90m ³ | 1530mm | 14 | 1500kg |
| B914HX | 14' / 4.27m | 9'9" / 2.97m | 8.00m ³ | 1530mm | 16 | 1650kg |
| B916HX | 16' / 4.88m | 9'9" / 2.97m | 9.30m ³ | 1530mm | 18 | 1780kg |



Overview

The Albutt range of Grass Forks offer a robust solution for loading into your clamp. Designed as a fixed version of our Folding Fork, the Grass Fork range utilises the same 1650mm Hardox tine base and high tensile steel Strenx fork back. With models for both Loading Shovels and Telehandlers, the range comes in a range of widths from 8' to 12' wide.

Features

- 1650mm long genuine Hardox tines
- Strenx fork back – Loading shovel models
- Complete with side tines
- Optional bolt on spill guard – Loading shovel models
- Brackets included to suit your Loading Shovel or Telehandler
- Cut outs in fork back give user visibility
- High capacities mean large volumes of material can be moved in one load
- Suitable for grass/maize/wholecrop silage
- 200 x 100mm tine holder
- Underside wear strip to tine holder

Telehandler Models

| Model | Width | Capacity | Height | No. Tines | Weight |
|--------|-------------|--------------------|--------|-----------|--------|
| B708HX | 8' / 2.44m | 3.70m ³ | 1216mm | 10 | 920kg |
| B709HX | 9' / 2.79m | 4.16m ³ | 1216mm | 11 | 1000kg |
| B710HX | 10' / 3.05m | 4.60m ³ | 1216mm | 12 | 1080kg |

Loading Shovel Models

| Model | Width | Capacity | Height | No. Tines | Weight |
|---------|-------------|--------------------|--------|-----------|--------|
| B908HXF | 8' / 2.44m | 4.89m ³ | 1496mm | 10 | 1001kg |
| B909HXF | 9' / 2.79m | 5.54m ³ | 1496mm | 11 | 1084kg |
| B910HXF | 10' / 3.05m | 6.21m ³ | 1496mm | 12 | 1169kg |
| B912HXF | 12' / 3.70m | 7.53m ³ | 1496mm | 14 | 1336kg |



MANURE FORKS – B SERIES

Overview

The B Series range of Manure Forks are designed for handlers with a lift capacity of over 4 tonnes. The fork features a solid fork back to protect the headstock and hydraulics of the machine whilst cut outs are strategically placed to aid visibility of the task in hand. The market leading specification is bolstered by a full width base wear strip on the underside of the tine holder.

Features

- For machines with a minimum 4 tonne lift capacity
- Choice of KV type or Hardox tines
- Full width base wear pad
- Base tine length; Hardox 1240mm / KV type 1100mm
- Strategically placed cut outs to aid visibility
- Solid fork back to protect headstock and hydraulics

Hardox Tine Models

| Model | Width | Capacity | Height | No. Tines | Weight |
|--------|--------------|-------------------------------|--------|-----------|--------|
| B566HX | 6'6" / 2.00m | 70 cu/ft / 2.00m ³ | 1034mm | 8 | 540kg |
| B570HX | 7' / 2.13m | 74 cu/ft / 2.10m ³ | 1034mm | 8 | 570kg |
| B576HX | 7'6" / 2.30m | 80 cu/ft / 2.26m ³ | 1034mm | 9 | 590kg |
| B580HX | 8' / 2.44m | 95 cu/ft / 2.40m ³ | 1034mm | 10 | 620kg |
| B590HX | 9' / 2.74m | 96 cu/ft / 2.70m ³ | 1034mm | 11 | 670kg |

KV Type Tine Models

| Model | Width | Capacity | Height | No. Tines | Weight |
|-------|--------------|-------------------------------|--------|-----------|--------|
| B466 | 6'6" / 2.00m | 60 cu/ft / 1.70m ³ | 1034mm | 9 | 370kg |
| B470 | 7' / 2.13m | 63 cu/ft / 1.80m ³ | 1034mm | 9 | 400kg |
| B476 | 7'6" / 2.30m | 68 cu/ft / 1.95m ³ | 1034mm | 10 | 420kg |
| B480 | 8' / 2.44m | 74 cu/ft / 2.10m ³ | 1034mm | 11 | 440kg |



MANURE FORKS – C SERIES

Overview

The C Series range of Manure Forks are designed for handlers with a lift capacity of between 2 and 4 tonnes. The fork features a solid fork back to protect the headstock and hydraulics of the machine whilst cut outs are strategically placed to aid visibility of the task in hand. The market leading specification is bolstered by a full width base wear strip on the underside of the tine holder.

Features

- For machines with a 2-4 tonne lift capacity
- Available with Hardox or KV type tines
- Full width base wear pad
- Base Tine length; Hardox 970mm / KV type 980mm
- Solid fork back to protect headstock and hydraulics

Hardox Tine Models

| Model | Width | Capacity | Height | No. Tines | Weight |
|--------|--------------|-------------------------------|--------|-----------|--------|
| C366HX | 6'6" / 2.00m | 47 cu/ft / 1.33m ³ | 852mm | 9 | 410kg |
| C370HX | 7' / 2.13m | 50 cu/ft / 1.41m ³ | 852mm | 9 | 440kg |
| C376HX | 7'6" / 2.30m | 55 cu/ft / 1.56m ³ | 852mm | 10 | 480kg |

KV Type Tine Models

| Model | Width | Capacity | Height | No. Tines | Weight |
|-------|--------------|-------------------------------|--------|-----------|--------|
| C366 | 6'6" / 2.00m | 47 cu/ft / 1.33m ³ | 852mm | 9 | 360kg |
| C370 | 7' / 2.13m | 50 cu/ft / 1.41m ³ | 852mm | 9 | 390kg |
| C376 | 7'6" / 2.30m | 55 cu/ft / 1.56m ³ | 852mm | 10 | 420kg |



MANURE FORKS – E SERIES

Overview

The E Series range of Manure Forks are designed for tractor loaders and skidsteers with up to 2 tonne lift capacity. The fork features a solid fork back to protect the headstock and hydraulics of the machine whilst cut outs are strategically placed to aid visibility of the task in hand. A full width wear strip is fitted to the underside of the tine holder adding to the robust design of the E Series range.

Hardox Tine Models

| Model | Width | Capacity | Height | No. Tines | Weight |
|--------|---------------|-------------------------------|--------|-----------|--------|
| E324HX | 4'1" / 1.24m | 21 cu/ft / 0.62m ³ | 678mm | 7 | 180kg |
| E340HX | 4'7" / 1.40m | 24 cu/ft / 0.70m ³ | 678mm | 7 | 210kg |
| E360HX | 5'3" / 1.60m | 27 cu/ft / 0.80m ³ | 678mm | 8 | 230kg |
| E380HX | 5'11" / 1.80m | 31 cu/ft / 0.90m ³ | 678mm | 9 | 250kg |
| E400HX | 6'7" / 2.00m | 35 cu/ft / 1.00m ³ | 678mm | 10 | 270kg |
| E410HX | 7' / 2.13m | 38 cu/ft / 1.07m ³ | 678mm | 10 | 300kg |

KV Type Tine Models

| Model | Width | Capacity | Height | No. Tines | Weight |
|-------|---------------|-------------------------------|--------|-----------|--------|
| E324 | 4'1" / 1.24m | 21 cu/ft / 0.62m ³ | 678mm | 7 | 170kg |
| E340 | 4'7" / 1.40m | 24 cu/ft / 0.70m ³ | 678mm | 7 | 200kg |
| E360 | 5'3" / 1.60m | 27 cu/ft / 0.80m ³ | 678mm | 8 | 220kg |
| E380 | 5'11" / 1.80m | 31 cu/ft / 0.90m ³ | 678mm | 9 | 240kg |
| E400 | 6'7" / 2.00m | 35 cu/ft / 1.00m ³ | 678mm | 10 | 260kg |
| E410 | 7' / 2.13m | 38 cu/ft / 1.07m ³ | 678mm | 10 | 290kg |

Features

- For tractor loaders and skidsteers
- Choice of KV type tines or Hardox tines
- Full width base wear pad
- Base Tine length; Hardox 800mm / KV type 760mm
- Strategically placed cut outs to aid visibility
- Solid fork back to protect headstock and hydraulics



FORK AND GRABS – B SERIES

Overview

The B Series range of manure fork and grabs are designed for handlers with a 4 tonne plus lift capacity. The ultra-heavy duty design comprises of a Hardox tine base, full width base wear strip, grab stops for ram and pin protection, and a strategically placed fork back for hydraulic and headstock protection.

Features

- For machines with a minimum 4 tonne lift capacity
- Hardox tines
- 35mm Ø top and bottom plated pins
- 45mm Ø pivot plated pins
- Heavy duty grab stops for ram seal and pin protection
- 75mm Ø bore rams
- Grab opens to 1905mm
- 1240mm long genuine Hardox Base Tines
- DX bushes in cylinder ends
- Inward facing tees on rams
- Large side visibility cut outs
- Full width base wear strip

Models

| Model | Width | Capacity | Height | Base Tines | Grab Tines | Weight |
|---------|--------------|-------------------------------|--------|------------|------------|--------|
| B666HXG | 6'6" / 2.00m | 81 cu/ft / 2.30m ³ | 1264mm | 8 | 5 | 820kg |
| B670HXG | 7' / 2.13m | 85 cu/ft / 2.42m ³ | 1264mm | 8 | 6 | 870kg |
| B676HXG | 7'6" / 2.30m | 92 cu/ft / 2.60m ³ | 1264mm | 9 | 6 | 910kg |
| B680HXG | 8' / 2.44m | 98 cu/ft / 2.76m ³ | 1264mm | 10 | 6 | 960kg |
| B690HXG | 9' / 2.74m | 110cu/ft / 3.10m ³ | 1264mm | 11 | 7 | 1050kg |



FORK AND GRABS – C SERIES

Overview

The C Series range of manure fork and grabs are designed for handlers with a 2-4 tonne lift capacity. The heavy duty design comprises of a choice of Hardox or KV type tines, full width base wear strip, grab stops for ram and pin protection, and a strategically placed fork back for hydraulic and headstock protection.

Hardox Tine Models

| Model | Width | Capacity | Height | Base Tines | Grab Tines | Weight |
|---------|--------------|-------------------------------|--------|------------|------------|--------|
| C560HXG | 6' / 1.83m | 44 cu/ft / 1.24m ³ | 1044mm | 8 | 5 | 540kg |
| C566HXG | 6'6" / 2.00m | 46 cu/ft / 1.30m ³ | 1044mm | 9 | 5 | 570kg |
| C570HXG | 7' / 2.13m | 50 cu/ft / 1.41m ³ | 1044mm | 9 | 6 | 610kg |
| C576HXG | 7'6" / 2.30m | 55 cu/ft / 1.56m ³ | 1044mm | 10 | 6 | 640kg |
| C580HXG | 8' / 2.44m | 60 cu/ft / 1.70m ³ | 1044mm | 11 | 7 | 670kg |

KV Type Tine Models

| Model | Width | Capacity | Height | Base Tines | Grab Tines | Weight |
|-------|--------------|-------------------------------|--------|------------|------------|--------|
| C560 | 6' / 1.83m | 44 cu/ft / 1.24m ³ | 1044mm | 8 | 5 | 510kg |
| C566 | 6'6" / 2.00m | 46 cu/ft / 1.30m ³ | 1044mm | 9 | 5 | 540kg |
| C570 | 7' / 2.13m | 50 cu/ft / 1.41m ³ | 1044mm | 9 | 6 | 570kg |
| C576 | 7'6" / 2.30m | 55 cu/ft / 1.56m ³ | 1044mm | 10 | 6 | 600kg |
| C580 | 8' / 2.44m | 60 cu/ft / 1.70m ³ | 1044mm | 11 | 7 | 630kg |

Features

- For machines with a 2-4 tonne lift capacity
- Choice of KV type or Hardox tines
- 35mm Ø top and bottom plated ram pins
- 45mm Ø pivot plated pins
- Heavy duty grab stops for ram seal and pin protection
- Grab opens to 1480mm
- Base Tine length; Hardox 970mm / KV type 980mm
- Inward facing tees on rams
- Large side visibility cut outs
- Full width base wear strip



FORK AND GRABS – E SERIES

Overview

The E Series range of manure fork and grabs are designed for tractor loaders and skidsteers with up to 2 tonne lift capacity. The fork features a solid fork back to protect the headstock and hydraulics of the machine whilst cut outs are strategically placed to aid visibility of the task in hand. The design comprises of a choice of KV type or Hardox tines, a full width wear strip and high capacity hydraulic cylinders.

Hardox Tine Models

| Model | Width | Capacity | Height | Base Tines | Grab Tines | Weight |
|---------|---------------|-------------------------------|--------|------------|------------|--------|
| E324HXG | 4'1" / 1.24m | 21 cu/ft / 0.62m ³ | 789mm | 7 | 4 | 290kg |
| E340HXG | 4'7" / 1.40m | 24 cu/ft / 0.70m ³ | 789mm | 7 | 4 | 300kg |
| E360HXG | 5'3" / 1.60m | 27 cu/ft / 0.80m ³ | 789mm | 8 | 5 | 340kg |
| E380HXG | 5'11" / 1.80m | 31 cu/ft / 0.90m ³ | 789mm | 9 | 5 | 360kg |
| E400HXG | 6'7" / 2.00m | 35 cu/ft / 1.00m ³ | 789mm | 10 | 6 | 380kg |
| E410HXG | 7' / 2.13m | 38 cu/ft / 1.07m ³ | 789mm | 10 | 6 | 400kg |

KV Type Tine Models

| Model | Width | Capacity | Height | Base Tines | Grab Tines | Weight |
|-------|---------------|-------------------------------|--------|------------|------------|--------|
| E324G | 4'1" / 1.24m | 21 cu/ft / 0.62m ³ | 789mm | 7 | 4 | 260kg |
| E340G | 4'7" / 1.40m | 24 cu/ft / 0.70m ³ | 789mm | 7 | 4 | 290kg |
| E360G | 5'3" / 1.60m | 27 cu/ft / 0.80m ³ | 789mm | 8 | 5 | 330kg |
| E380G | 5'11" / 1.80m | 31 cu/ft / 0.90m ³ | 789mm | 9 | 5 | 360kg |
| E400G | 6'7" / 2.00m | 35 cu/ft / 1.00m ³ | 789mm | 10 | 6 | 375kg |
| E410G | 7' / 2.13m | 38 cu/ft / 1.07m ³ | 789mm | 10 | 6 | 385kg |

Features

- For Tractor Loaders and Skidsteers
- 25mm Ø top and bottom plated pins
- 30mm Ø pivot plated pins
- Optional side tines
- Grab opens to 1060mm
- Base Tine length; Hardox 800mm / KV type 760mm
- Full width base wear strip



Overview

The Albutt Shear Grab range is designed to give users a strong, reliable option for cutting clamped silage. Trusted all over the world, the Albutt name is synonymous with a quality Shear Grab product. High capacity rams, strategically placed offer unrivalled clamping power, with a Hardox blade leaving a smooth clamp face. For maximum durability and strength, choose the Hardox tine models. Providing 2-3 times better wear than mild steel, the tines are almost unbreakable. As they are welded into the shear grab, users eliminate the requirement to tighten tines as a part of their routine maintenance.

Features

- Hardox cutting blades and teeth
- Double skinned front grab
- Heavy duty thick walled box sections
- Tine options – KV type or Hardox
- 50mm diameter pivot pins
- 90mm bore rams
- 3 rams on S190 and above
- Central cutting blade on S190 and above
- Recommended to be used with Albutt's bolt on bracket system – see page 111
- Height 843mm / Depth 975mm / Jaw Opening 760mm

KV Type Tine Models

| Model | Width | Tines | Centre Blade | Rams | Capacity | Weight |
|-------|--------|-------|--------------|----------|--------------------|--------|
| S130 | 1300mm | 10 | No | 2 x 90mm | 0.70m ³ | 410kg |
| S160 | 1600mm | 12 | No | 2 x 90mm | 0.85m ³ | 470kg |
| S190 | 1900mm | 14 | Yes | 3 x 90mm | 1.00m ³ | 670kg |
| S220 | 2200mm | 16 | Yes | 3 x 90mm | 1.15m ³ | 725kg |

Hardox Models

| Model | Width | Tines | Centre Blade | Rams | Capacity | Weight |
|--------|--------|-------|--------------|----------|--------------------|--------|
| S160HX | 1600mm | 12 | No | 2 x 90mm | 0.85m ³ | 535kg |
| S190HX | 1900mm | 14 | Yes | 3 x 90mm | 1.00m ³ | 760kg |
| S220HX | 2200mm | 16 | Yes | 3 x 90mm | 1.15m ³ | 810kg |

Shear King SK250HX



Shear King Mini



SHEAR KING/SHEAR KING MINI

Overview

The Shear King and Shear King Mini range of high capacity Shear Grabs are designed for users wishing to cut and move large volumes of clamp silage and maximise the productivity of their machine. Featuring high tensile steels throughout (Hardox and Strenx) the ultra-heavy duty build quality ensures the grab is suitable for intense cycles. Both ranges come with Hardox tines as standard and feature 115mm or 125mm diameter bore rams depending on model. With the large capacity of the Shear King grabs, the number of cuts and journey times can be reduced, improving silage quality and handling efficiency.

Shear King Mini

| Model | Width | Tines | Rams | Capacity | Weight |
|----------|--------|-------|-----------|--------------------|--------|
| SKM190HX | 1900mm | 13 | 2 x 115mm | 1.40m ³ | 1010kg |
| SKM220HX | 2200mm | 15 | 2 x 115mm | 1.60m ³ | 1120kg |
| SKM250HX | 2500mm | 17 | 2 x 115mm | 1.80m ³ | 1220kg |

Shear King

| Model | Width | Tines | Rams | Capacity | Weight |
|---------|--------|-------|-----------|--------------------|--------|
| SK220HX | 2200mm | 15 | 2 x 125mm | 2.20m ³ | 1320kg |
| SK250HX | 2500mm | 17 | 2 x 125mm | 2.50m ³ | 1390kg |

Features

- Hardox tines welded into heavy duty box
- Hardox cutting blades to the front and side of the grab
- 60mm diameter grab pivots – bushed
- Front grab double skinned
- Suitable for grass, maize and wholecrop
- Long term reliability with clean cuts
- Domex high tensile steel grab faces
- Recommended to be used with Albutt's Bolt on Brackets system – see page 111
- SKM Height 1085mm / Depth 1157mm / Jaw Opening 946mm
- SK Height 1229mm / Depth 1323mm / Jaw Opening 1111mm

HARDOX[®]
WEARPARTS

STRENX[™]
PERFORMANCE STEEL



Overview

The Albutt Shear Bucket range is based on the ultra-high strength design of the Shear King range, providing excellent cutting capabilities on all silage types. The grab is taken directly off of the Shear King Mini and features the same high tensile steels (Hardox & Strenx) throughout. The bucket floor is braced by underside Hardox tines for maximum durability. Across the front edge of the bucket is a specially commissioned Hardox cutting edge, sharpened to enter the pit face as clean as possible. This process is bolstered by cutting edges to the side profiles of the bucket.

Features

- Hardox cutting blades to the front and side of the grab
- High tensile Strenx front blade
- Twin double acting hydraulic rams
- Heavy duty box sections; 10mm wall
- Front grab double skinned for maximum strength
- Suitable for maize, wholecrop and precision chopped grass silage
- Hardox tines brace the bucket floor
- Recommended to be used with Albutt's Bolt on Brackets system – see page 111

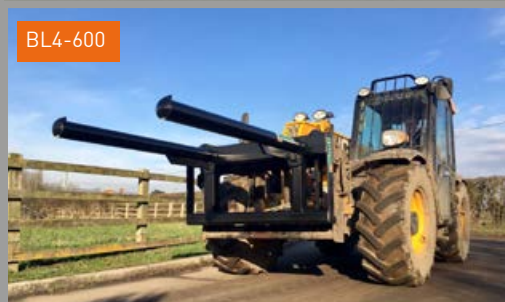
Shear Buckets

| Model | Width | Capacity | Bore Size | Opening | Weight |
|-----------|--------|--------------------|-----------|---------|--------|
| SB190HX | 1900mm | 1.00m ³ | 2 x 100mm | 760mm | 760kg |
| SB220HX | 2200mm | 1.25m ³ | 2 x 100mm | 760mm | 815kg |
| SKMB190HX | 1900mm | 1.40m ³ | 2 x 115mm | 946mm | 1070kg |
| SKMB220HX | 2200mm | 1.60m ³ | 2 x 115mm | 946mm | 1150kg |
| SKMB250HX | 2500mm | 1.80m ³ | 2 x 115mm | 946mm | 1320kg |
| SKB220HX | 2200mm | 2.20m ³ | 2 x 125mm | 1111mm | 1520kg |
| SKB250HX | 2500mm | 2.50m ³ | 2 x 125mm | 1111mm | 1590kg |

BL4-1000



BL4-600



BL4H-1000



Overview

The Albutt range of Bag Lifters are designed to give a safe lifting option for handling 600kg and 1000kg bags. Designed to be used with telehandlers or loaders, the bag handler simplifies the safe unloading and stacking of fertiliser and seed bags. Every model comes complete with brackets suit your machine, is CE marked with test certificate and comes with a certificate of conformity.

The hydraulic Bag Lifter offers the best in site efficiency by allowing all bag types to be moved with a single bag lifter. The arms simply move to suit your required by size by the comfort of the cab.

Models

| Model | Will handle; | Tube Length | Weight |
|-----------|--------------------------------------------------------|-------------|--------|
| BL1-1000 | 1 x 1000kg bag | 800mm | 140kg |
| BL2-1000 | 2 x 1000kg bags | 800mm | 185kg |
| BL4-600 | 4 x 600kg bags | 1400mm | 230kg |
| BL4-1000 | 4 x 1000kg bags | 1750mm | 260kg |
| BL4H-1000 | 4 x 600kg bags / 4 x 1000kg bags Adjustable arms | 2000mm | 290kg |

Features

- Models for 1000kg and 600kg bags
- Fixed arm and hydraulically adjustable models
- Arms on Hydraulic model can be adjusted from the comfort of the cab to pick up either 600kg or 1000kg bags
- Hydraulic model can also be adjusted manually
- Arm spacing designed to reduce swing when in transit and tight stacking
- Supplied with test certificate
- Supplied with certificate of conformity
- CE Marked
- Brackets included
- Models for 1 x 1000kg bag, 2 x 1000kg bags, 4 x 600kgs bags or 4 x 1000kgs bags



Overview

The Albutt Grain dozer range is designed for use with telehandlers, loaders and shovel loaders. And come complete with quick release brackets to suit your machine. The heavy duty design incorporates round and smooth surfaces to prevent grain trapping. A modular design, means all sizes can be extended by 1.0 or 2.0 metres. We offer an optional plastic wear strip for floor protection. Both extensions and plastic wear strip can be retro fitted. A large 2.3m wide blade (1m high) increases grain pushing capability from previous models.

Models

| Model | Length | Width | Weight |
|-------|-------------|-------|--------|
| H101 | 3.05m (10') | 2.32m | 480kg |
| H121 | 3.66m (12') | 2.32m | 500kg |
| H141 | 4.27m (14') | 2.32m | 520kg |

Features

- Round tube design keeps grain in the store and not in the yard
- Bolt together design allowed length to be added in the future if required
- Recommended to be used with Albutt's Bolt on Brackets system – see page 111
- Large 2.3m x 1m blade
- Modular design; length can be changed
- High visibility yellow paint finish
- Nylon wear edge for floor protection (optional)
- For Grain use only
- Optional bolt on extensions; 3' and 6' long
- Ask about our Heavy Duty frame option for use in Grain Stores



Overview

The Albutt Telescrape Yard Scraper offers a fully floating design to scrape uneven surfaces. Designed for use on Telehandlers and Tractor Loaders, it offers greater advantages over conventional, lighter duty scrapers. A fully reversible; 'Push' or 'Pull' action, the unique design is one of Albutt's most popular with many units being exported across the world each year. Operation of the 'Pull' / 'Push' mechanism is all done from the comfort of the cab; simply lift the boom and rotate the headstock to put the Scraper into the desired position.

Features

- Fully floating design to scrape uneven surfaces
- Heavy duty rubber blade 50mm thickness- reversible for longer life
- Fast and efficient
- Adjustable width
- Galvanised finish
- Automatic down-pressure control – to clear hard material
- Reversible blade; push and pull
- Weight – 480kg
- 2 models; YS30GV / YS50GV
- Recommended to be used with Albutt's Bolt on Brackets system – see page 111

Models

| Model | Width | Blade | Weight |
|--------|--------------|----------|--------|
| YS30GV | 1.8m to 2.7m | 150x50mm | 410kg |
| YS50GV | 2.2m to 3.1m | 150x50mm | 480kg |



Overview

The Albutt Snow Plough range have been developed for use with Telehandlers, Loaders, Tractors and Groundcare machinery. Available in four widths, they are supplied with brackets to suit your machine.

The blade can be angled both sides, with a choice of manual or hydraulic control. Fitted with guide castors (height adjustable), a replaceable rubber wear edge and parking legs, the Albutt range of Snow Ploughs provide a cost effective and reliable solution for snow clearance. Trusted the world over, many are used in the harsh conditions in Russia each year.

Features

- Four widths, 1600mm, 2130mm, 2540mm and 2800mm
- Recommended to be used with Albutt's Bolt on Brackets system – see page 111
- Manual or hydraulic angle control - 25°
- Parking legs
- Replaceable rubber wear edge
- Shock absorbing rubber bump pads (hydraulic models)
- High visibility orange livery
- Height adjustable castor wheels

Models

| Model | Blade Width | Track Covered | Height | Weight |
|-------|---------------|---------------|------------|--------|
| SP53* | 5'3" / 1600mm | 4'9" / 1518mm | 2' / 610mm | 330kg |
| SP70 | 7' / 2133mm | 6'6" / 2003mm | 2' / 610mm | 340kg |
| SP84 | 8'4" / 2540mm | 7'8" / 2370mm | 2' / 610mm | 370kg |
| SP92 | 9'2" / 2794mm | 8'6" / 2606mm | 2' / 610mm | 450kg |

Add 'H' to any part number for hydraulic angling

*not available with hydraulic angling



Combi-Spikes

- 2 x 810mm tines / Optional 980mm top tine
- Optional Bale Support Arms – Increases height to 1240mm
- Brackets integrated into the frame

| Model | Will Handle | Brackets |
|-------------|------------------------------|--------------|
| ES100 | 1 x round 1 x mini hesston | Euro |
| CS100/JCBQF | 1 x round 1 x mini hesston | JCB Q Fit |
| CS100/PC | 1 x round 1 x mini hesston | Pin and Cone |
| CS100/MAN | 1 x round 1 x mini hesston | Manitou |
| CS100/MER | 1 x round 1 x mini hesston | Merlo |



Round Bale Spikes

- Substantial heavy duty box section design
- F100 1 x 980mm tines with 1 x support tine
- F110 2 x 980mm tines with 2 x support tines
- Bolt on brackets extra

| Model | Will Handle | Weight |
|-------|-----------------|--------|
| F100 | 1 x round bale | 55kg |
| F110 | 2 x round bales | 75kg |

Rectangular Bale Spikes

- Removeable back frame – 2136mm tall with / 1080mm tall without
- 3 x 980mm tines – other sizes available
- Optional fold up tine facility
- Bolt on brackets extra

| Model | Will Handle | Weight |
|---------|----------------------------------------|--------|
| F131 | 2 x hesstons 3 x mini hesstons | 153kg |
| F131/FT | “ ” plus tines fold for road transport | 185kg |



Multi Bale Spike

- Height adjustable back frame – 1770mm to 2270mm
- 3 x 980mm tines / 4 x 810mm tines
- For round and square bales
- Bolt on brackets extra

| Model | Will Handle | Weight |
|-------|------------------------------------------------------------------------------------|--------|
| F125 | 2 x rounds 2 x hesstons 3 x mini hesstons 4 x quadrants 6 x mini quadrants | 210kg |



F650HX



F501

F501 / F650HX – MULTI BALE STACKERS

F501 – Features

- Handle square or round bales
- Suitable for Telehandlers
- KV type tines
- Hardox central bracing system
- Synchronised wing movement
- Eliminate double handling
- Utilise barn space
- Tines are released from bale before movement of machine
- Recommended to be used with Albutt's bolt on bracket system – See page 115

F650HX Bale King – Features

- Handle square or round bales
- Suitable for Telehandlers & Loading Shovels (minimum 3.50 tonne capacity)
- Choice of Hardox or KV type tines
- Twin rams
- Flow control valve – synchronized wing movement
- Floating bottom tine bar
- Tine bar folds vertical for road transport
- Recommended to be used with Albutt's Bolt on Brackets system – see page 111

Models

| Model | Tines | Will Handle | Capacity | Weight |
|--------|---------|-----------------------------------------------------------------|----------|--------|
| F501 | KV type | 2 x Hesstons 3 x Mini Hesstons 2 x Rounds | 1200kg | 450kg |
| F650HX | Hardox | 3 x Hesstons 3 x Rounds | 1800kg | 750kg |
| F650K | KV type | 3 x Hesstons / 4 x Mini Hesstons 3 x Rounds 5 x Quadrants | 1800kg | 750kg |

F140A



F150A



F155A



F160A

Overview

The Albutt heavy duty bale grabs are designed for use with telehandlers, loading shovels and tractor loaders. Available with attachment brackets to suit your machine. The range comprises of 4 models covering all sizes of bales from 8 conventional to hesston bales. All models feature forged steel claws for high strength and long life. Heavy duty, double acting rams provide sufficient power for claw penetration.

Features

- Cast claws for easy penetration and secure grip
- High capacity hydraulic cylinders
- Guide bar for mounting on both sides
- Parking leg
- Heavy duty box section frame
- Bracing from front to rear of grab
- Models to suit all bale types
- Recommended to be used with Albutt's Bolt on Brackets system – see page 111
- Market leading specification
- Simultaneous claw entry

Models

| Model | Will Handle |
|-------|------------------------------------------|
| F140A | 8 x conventional bales 2 x 800mm bales |
| F150A | 2 x 1200mm bales 3 x 800mm bales |
| F155A | 3 x 1200mm bales |
| F160A | 2 x 800mm bales |



albutt

Overview

The Albutt F301 Bale Grab is designed to handle round, wrapped bales of silage. The heavy duty design features smooth and large flat face contact points, ensuring the bale wrap is protected. The rollers are free to spin on forged steel tines featuring two plain bearings to ensure free rotation around the tine. The rollers are quickly and easily removed to expose two 1250mm forged steel tines. This means the handler can then be used as a bale spike for round and square straw bales. Each roller is secured with a bolted latch which can be mounted on either side of the handler arm.

Features

- Heavy duty design
- Twin rollers over forged steel tines (1250mm long)
- Rollers feature plain bearings to sure free rotations
- Simple latch for quick removal of rollers
- Handle round wrapped silage bales
- Handle round or square straw bales
- Large diameter heavy duty arm pivots
- Large smooth flat face to protect bale wrap
- Recommended to be used with Albutt's Bolt on Brackets system – see page 111
- Closed width 691mm

Models

| Model | Open width | Capacity | Weight |
|-------|------------|----------|--------|
| F301 | 1425mm | 1200kg | 195kg |



Overview

The Albutt square bale handler features a new heavy duty design. Designed for use with telehandlers and tractor loaders the F352 handler will handle square wrapped bales of silage. The overhead clam arm has a two stage squeeze action. This clamp action minimizes the gap between bales required when stacking. Ideal for stacking bales on trailers, in buildings or yards. All contact points features a round tube design to protect bale film.

Features

- Handlers wrapped silage bales
- Adjustable from 1030mm open width to 540mm closed width.
- 4 position opening
- Over-head, unique two action squeeze
- Heavy duty design
- Suitable for Telehandlers, Tractor Loaders or Wheeled Loaders; Brackets optional
- Round edges to protect bale wrap
- High capacity hydraulic cylinder
- High grade pins
- Recommended to be used with Albutt's Bolt on Brackets system – see page 111

Models

| Model | Open | Closed | Weight | Capacity |
|-------|--------|--------|--------|----------|
| F352 | 1030mm | 540mm | 251kg | 1200kg |

F450



F470



F470 Contractor Bale Grab

- Handle square or round bales
- Contractor / heavy user design and build quality
- Handle wrapped silage or straw bales
- Opens from 700mm to 2450mm
- Lift capacity 2000kgs
- Weight 600kgs
- Spill frame allows second square bale to be carried
- Fitted with lateral adjustment for the largest possible range whilst keeping frame width at a minimum
- 2 x Three way valves select between clamp movement or width adjustment
- Set maximum width required, then adjust valve to operate clamp movement
- Recommended to be used with Albutt's bolt on bracket system – see page 115
- Minimum 3 tonne lift machine required

Models

| Model | Open | Closed | Weight | Capacity |
|-------|--------|--------|--------|----------|
| F470 | 2450mm | 700mm | 600kg | 2000kg |
| F450 | 2050mm | 750mm | 278kg | 1000kg |

F450 Bale Grab

- Handle square or round bales
- Handle wrapped silage or straw bales
- Opens from 750mm to 2050mm
- Lift capacity 1000kg
- Weight 278kg
- Optional bolt on back frame allows 2 bales to be carried
- Compact width when closed allows access to restricted areas
- Recommended to be used with Albutt's Bolt on Brackets system – see page 111



Overview

The Albutt F410 soft hands bale stacker securely handles round wrapped silage bales. The attachment allows bales to be stacked in vertical columns with relative ease. Vertical column stacks provide greater stack stability, maintaining bale shape for easy feeding. Stacking on the thickest part of the wrap also minimises wrap damage and retains feed quality.

The heavy duty design of the F410 also means that the grab is as at home being used on Telehandlers as it is on Tractor Loaders

Features

- Heavy duty design
- Stack round bales in columns
- Recommended to be used with Albutt's Bolt on Brackets system – see page 111
- Ideal for tight stacking
- Lifter capacity 1000kgs
- Spring system to retain arms
- Bale diameters 900mm to 1600mm
- Bolt on brackets (optional); means the brackets can be quickly and easily changed if you change your machine make
- High capacity hydraulic cylinder offers secure grip

Models

| Model | Bale Diameter | Capacity | Weight |
|-------|---------------|----------|--------|
| F410 | 900 – 1600mm | 1000kg | 180kg |

LG105



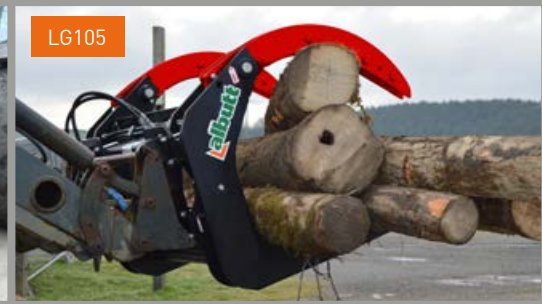
LG405



LG500



LG105



Overview

The Albutt Log Grab range has been specifically designed to suit the machine they are fitted onto, with individual models for Tractor Loaders, Telehandlers and Loading Shovels. Incorporating high strength materials such as Domex and Hardox in key stress areas, the range is built to last in a variety of forestry applications. All models come as standard with brackets to suit your machine. Used the world over, the Albutt Log Grab range is trusted time and again with repeat orders from across the globe. LG055, LG105 and LG405 models can be supplied with optional Hardox serrated edges which bolt onto the Log Grabs arms.

Features

- Twin, high capacity rams on all models
- Domex / Hardox used in key stress points
- Available with bolt on, Hardox serrated edges; optional
- Recommended to be used with Albutt's Bolt on Brackets system – see page 111
- Suitable for a variety of applications
- Load size sheets available
- Wide opening to suit various log / timber sizes
- Used and demonstrated at major forestry events
- Pipes to central tee piece
- High grade pins with stop protection (certain models)

Models

| Model | Suitability | Width | Capacity | Weight |
|-------|---------------------|--------|----------|--------|
| LG055 | Loaders / Skidsteer | 1280mm | 2500kg | 380kg |
| LG105 | Telehandler | 1290mm | 3000kg | 450kg |
| LG405 | Loading Shovel | 1320mm | 3000kg | 550kg |
| LG500 | TH / Loading Shovel | 1370mm | 3500kg | 670kg |



Site Pro



SITE PRO/TIMBER GRAPPLE

Site Pro

- Unique design shaped for hard raking in both directions, dig up roots, rocks, trees
- Tines manufactured from Hardox steel; 3 times the strength of mild steel
- Tine resistance to breakage and bending
- Teeth mesh to ensure a high pressure grip of material
- Meshed teeth can push material as small as 75mm; allowing fine raking in both directions
- Move trees, rocks, waste without picking up dirt

Models

| Model | Width | Weight |
|-----------|--------------|--------|
| WR5250HXG | 5'0" / 1.52m | 730kg |
| WR6260HXG | 6'0" / 1.83m | 840kg |
| WR7270HXG | 7'0" / 2.13m | 870kg |
| WR8280HXG | 8'0" / 2.44m | 1020kg |

Timber Grapple

- Curved grapple arms allow timber to roll into the grapple arms
- 360 degree rotator
- Hydraulic ram protected
- Timber Grapple manufactured from high tensile Hardox steel
- All grease points easily accessed with grapple closed
- Handles timber 50mm to 700mm diameter
- Serrated blade help steady load
- Recommended to be used with Albutt's Bolt on Brackets system – see page 111

Models

| Model | Lift Capacity | Jaw Opening | Weight |
|-------|---------------|-------------|--------|
| LG700 | 2500kg | 1450mm | 295kg |
| LG800 | 4000kg | 1890mm | 330kg |



Timber Grapple

HARDOX®
WEARPARTS

STRENX™
PERFORMANCE STEEL



Fixed Fork Carriages

| Model | Max Capacity | Class / ITA |
|-------|--------------|-------------|
| P150 | 1.50 tonne | 2 |
| P200 | 2.00 tonne | 2 |
| P250 | 2.50 tonne | 2 |
| P340 | 3.40 tonne | 3 |
| P450 | 4.50 tonne | 3 |
| P600 | 6.0 tonne | 4 |

Fixed Fork Carriages – Supplied with 1220mm Long Pallet Forks

| Model | Max Capacity | Class / ITA |
|--------|--------------|-------------|
| P150PF | 1.50 tonne | 2 |
| P200PF | 2.00 tonne | 2 |
| P250PF | 2.50 tonne | 2 |
| P340PF | 3.40 tonne | 3 |
| P450PF | 4.50 tonne | 3 |
| P600PF | 6.0 tonne | 4 |

ALL PALLET FORK TYPES SUPPLIED - CALL OUR SALES OFFICES TO DISCUSS YOUR REQUIREMENTS

PALLET FORK CARRIAGES

Floating Fork Carriages

| Model | Max Capacity | Bar Ø |
|---------|--------------|---------------|
| G350JCB | 3.50 tonne | 50mm diameter |
| G400JCB | 4.00 tonne | 57mm diameter |
| G500JCB | 5.00 tonne | 57mm diameter |

Floating Fork Carriages – Supplied with 1220mm Long Pallet Forks

| Model | Max Capacity | Bar Ø |
|--------|--------------|---------------|
| P151PF | 1.5 tonne | 44mm diameter |
| P251PF | 2.50 tonne | 44mm diameter |
| P351PF | 3.50 tonne | 50mm diameter |
| P451PF | 4.50 tonne | 57mm diameter |
| P601PF | 6.0 tonne | 60mm diameter |

Merlo Fork Carriage – For Existing Merlo Forks

| Model | Max Capacity | Weight |
|-----------|--------------|--------|
| G400MERLO | 4.0 tonne | 95kg |



18T version



Fork Positioners

- Accurate fork positioning, control position of pallet forks from the cab
- Available with or without pallet forks
- Excellent visibility, strength and versatility
- Spill Guard
- Nylon bushes
- Road transport fork retainers
- 4.50 to 18 tonne lift capacities

Side Shift Carriage



Side Shift Carriages

| Model | Class / ITA | Width |
|---------|-------------|--------|
| SL41150 | Class 2 | 1150mm |
| SL61150 | Class 3 | 1150mm |
| SL71220 | Class 4 | 1200mm |

Merlo Headstock Conversions

- Merlo headstock is converted to pick up attachments of another bracket type
- I.E Headstock is converted to pick up Pin and Cone attachments
- Manual and Hydraulic locking options
- Designed to give best crowd and dump angles available
- Will derate the lift capacity of the telehandler

Replacement Headstocks

- Wide range of replacement carriages
- Alternative machine/attachment types available – I.E JCB 541-70 headstock to pick up Pin and Cone attachments
- Manual and Hydraulic locking options
- Designed and built for some of the industry's leading OEM's
- Talk to our Sales office to discuss your requirements





Carriage Mounted Jib

- Carriage mounted
- 6 mounting points
- Up to 4 tonne lift capacity
- Swivel hook
- Heavy duty construction
- Brackets included

| Model | Max Capacity | Length | Weight |
|--------|--------------|--------|--------|
| LJ4000 | 4000kgs | 1860mm | 183kg |



Pallet Fork Hook – Fixed

- Fully tested and certified, supplied with test certificate
- Complete with swivel hook and shackle
- Positive fixings behind heel of fork
- Fixed hook position @ 900mm load centre

| Model | Req. Capacity | Max Fork Size | Load Centre | COG | Weight |
|------------|---------------|---------------|-------------|-------|--------|
| FMH900-2.0 | 2000kg | 150 x 50mm | 900mm | 651mm | 34kg |
| FMH900-3.0 | 3000kg | 150 x 50mm | 900mm | 651mm | 38kg |
| FMH900-5.0 | 5000kg | 150 x 50mm | 900mm | 720mm | 45kg |

Pallet Fork Hook – Adjustable

- Adjustable lifting positions
- Fast and simple fitting
- Complete with swivel hook and shackle
- Clamps firmly anywhere along forks
- Fully tested, certified and complete with test certificate

| Model | Max Fork Size | Fork Spread | Capacity | Weight |
|----------|---------------|-------------|----------|--------|
| FMH-A2.0 | 140 x 50mm | 676mm | 2000kg | 20kg |
| FMH-A3.0 | 140 x 50mm | 676mm | 3000kg | 30kg |
| FMH-A4.0 | 150 x 60mm | 720mm | 4000kg | 40kg |
| FMH-A5.0 | 150 x 60mm | 720mm | 5000kg | 48kg |

Pallet Fork Extensions

- Fully tested and certified
- Toes profiled and chamfered for ease of use
- Extensions held firmly in place with integral retaining bar
- Positive fix behind heel of fork

| Model | Max Fork Size | Length | Weight |
|---------------|---------------|--------|--------|
| FEX100-1800HD | 100 x 50mm | 1800mm | 53kg |
| FEX100-2000HD | 100 x 50mm | 2000mm | 59kg |
| FEX125-1800HD | 125 x 50mm | 1800mm | 67kg |
| FEX125-2000HD | 125 x 50mm | 2000mm | 83kg |



BS11



BS11



ES25



TS11



Tip Skips

- 4 way pallet fork entry
- Manual lever release
- Auto return to position when emptied
- Can be colour coded to suit various waste types

| Model | Capacity | Width | Weight |
|-------|--------------------|--------|--------|
| TS11 | 1.13m ³ | 1070mm | 228kg |
| TS13 | 1.30m ³ | 1320mm | 254kg |
| TS17 | 1.75m ³ | 1570mm | 280kg |

Bucket Skips

- Ideal for use on building sites, stables and industrial sites.
- Quick release brackets to suit telehandlers or loaders.
- Heavy duty specification 6mm body
- Skip is emptied by tipping headstock of machine

| Model | Capacity | Width | Weight |
|-------|--------------------|--------|--------|
| BS11 | 1.10m ³ | 1000mm | 320kg |
| BS14 | 1.40m ³ | 1260mm | 370kg |

Equi-Skips

- Ideal for use on equestrian facilities
- Hold large volumes of straw or shaving muck
- Quick release brackets to suit telehandlers or loaders included.
- Heavy duty specification 6mm body

| Model | Capacity | Width | Weight |
|-------|--------------------|--------|--------|
| ES25 | 2.50m ³ | 2058mm | 520kg |



M600



M400



M200

Overview

The Albutt Man Platform range is manufactured to meet the requirements of HSE AIS28 guidelines and comes complete with a SWL test certificate (LOLER 1998). A sturdy high impact construction hosts all the features required by PM28 guidelines including weldmesh back guard, barriers and guards, integral harness rail, non slip floor with drain holes, kickboards and high visibility yellow paint finish. A high back means the platform can be used on a variety of machines, from Telehandlers to masted Forklifts. All models come as standard with fittings to fit onto your machines pallet forks and bracket fixings can be added on some models.

Models

| Model | Platform Size | Max Fork | Weight |
|---------------------|---------------|------------------|--------|
| M200 | 1.00m x 1.00m | 150 x 50mm | 176kg |
| M400 | 1.40m x 1.24m | 150 x 50mm | 212kg |
| M400GV (galvanised) | 1.40m x 1.24m | 150 x 50mm | 212kg |
| M600 | 2.44m x 1.24m | Carriage Mounted | 265kg |
| M600GV (galvanised) | 2.44m x 1.24m | Carriage Mounted | 265kg |

| Part Number | Description |
|-------------|------------------------------------------------------------------------------------------------------------------------------|
| M2H | PPE / HSE Kit. Body harness, lanyard with hooks, safety helmet. All CE marked to EN397. Required for each platform operator. |

Features

- Sturdy high impact construction
- Substantial high back guard in 80mm x 40mm section
- Anti trap hand rail and high meshed back guard
- Positive fix to fork tines
- Barriers, guards and toe boards to latest regulations
- Integral safety harness rail
- Non slip floor with drain holes
- Comply with HSE AIS28
- High visibility yellow paint finish
- 500kg SWL - test certificate supplied
- Bolt on Brackets available on M400 – see page 111
- M600 uses Bolt on Brackets only – see page 111



WASTE WOOD CHIP BUCKET

Overview

The Albutt high capacity wood waste bucket is ideal for customers wanting to move large volumes of material such as wood chip. The heavy duty bucket features internal strengthening gussets, full length corner gussets and a high grade weldmesh spill guard. A boron 500 bolt on reversible toe plate is fitted as standard.

Features

- Integral spillguard – see through
- Bolt on cutting edge – 500 Brinell reversible for long life and low maintenance
- Heavy duty design
- 8mm body with 15mm stiffeners to sides, under brackets and floor
- Full depth internal gussets
- Suitable for handling large quantities of low density wood wast

Models

| Model | Width | Capacity | Height | Depth | Weight |
|------------|------------|--------------------------------|--------|--------|--------|
| WA180-90HD | 9' / 2.74m | 180 cu/ft / 5.15m ³ | 1700mm | 1930mm | 1600kg |



WASTE KING FORK AND GRAB

Overview

The Albutt Waste King Fork & Grab offers unrivalled strength and durability in the Waste Attachment market. By incorporating high tensile materials such as Strenx and Hardox, the grab is renowned for its heavy duty build quality. When performance is your deciding factor, a host of features make the Waste King the obvious option.

Features

- Genuine Hardox tines
- Grab pivots bushed with self lubricating bushes
- Hydraulic rams bushed
- Open grab dimension 1980mm
- Bolt on toe plate across base tine tips; Optional
- Wear strip under tine holder
- Welded fork tines
- High capacity hydraulic cylinders
- High grade pins throughout
- Solid fork back with strategic cut outs for visibility

Models

| Model | Width | Capacity | Height | Depth | Weight |
|----------|--------------|--------------------------------|--------|--------|--------|
| WB676HXG | 7'6" / 2.30m | 92 cu/ft / 2.60m ³ | 1420mm | 1240mm | 1255kg |
| WB680HXG | 8' / 2.44m | 97 cu/ft / 2.75m ³ | 1420mm | 1240mm | 1325kg |
| WB690HXG | 9' / 2.74m | 110 cu/ft / 3.10m ³ | 1420mm | 1240mm | 1405kg |

HARDOX[®]
WEARPARTS

STRENX[™]
PERFORMANCE STEEL



WASTE KING PUSH OFF FORK

Overview

The Albutt Waste King Fork with Push Off Gate is based on the same principle design as our ultra popular Push Off Buckrake range. The heavy duty design is based on a 200 x 100mm bottom tine holder with full width wear strip and 1650mm genuine Hardox tines. A solid gate is utilised with strategically placed cut outs to aid visibility.

Features

- 1650mm genuine Hardox base tines
- Side tines
- Flow divider valve helps to prevent gate twists on uneven loads
- For use with Telehandlers and Loading Shovels
- 200 x 100mm tine holder
- 60mm diameter main pivot pin
- Double profile gate mounting prevents arms bending
- 35mm diameter ram pivot pins
- 75mm ram bore size
- Suitable for a variety of industries and applications

Models

| Model | Width | Capacity | Height | Tines | Weight |
|-----------|-------------|--------------------------------|--------|-------|--------|
| WB808PPHX | 8' / 2.44m | 160 cu/ft / 4.53m ³ | 1635mm | 10 | 1280kg |
| WB809PPHX | 9' / 2.74m | 180 cu/ft / 5.09m ³ | 1635mm | 11 | 1400kg |
| WB810PPHX | 10' / 3.05m | 200 cu/ft / 5.66m ³ | 1635mm | 12 | 1500kg |

HARDOX[®]
WEARPARTS

STRENX[™]
PERFORMANCE STEEL



WASTE KING COMPOSTING FORK

Overview

The Albutt Waste King Compost Fork is designed for use on green waste, compost and other types of loose waste. A high strength, solid back is manufactured from the high tensile steel Strenx which offers maximum strength at minimum weight. The fork features genuine Hardox tines at 1650mm long and a Hardox side tines either side. The length of the tines, side tines and fork back design provide maximum capacity for those wanting to handle large volumes. Hardox tines are also resistant to bending and offer long operating life.

Features

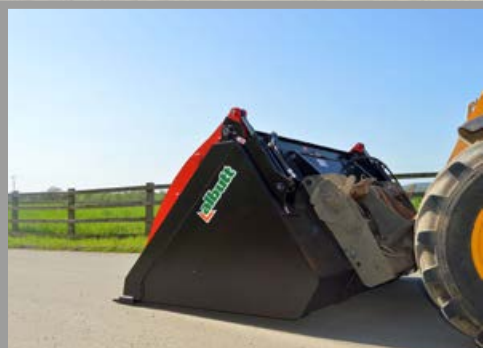
- Heavy duty design
- Strenx fork back; maximum strength, minimum weight
- 1650mm long genuine Hardox tines
- Brackets to suit your machine
- 200 x 100mm tine holder
- Wear strip to underside of fork tine holder
- Hardox side tine on each side
- Suitable for loading shovels and telehandlers
- Ideal for high intensity use in green waste sites
- Solid fork back protects headstock and hydraulics
- Cut outs in fork back for visibility

Models

| Model | Width | Capacity | Height | Tines | Weight |
|---------|-------------|--------------------------------|--------|-------|--------|
| WB708HX | 8' / 2.44m | 138 cu/ft / 3.90m ³ | 1040mm | 10 | 1030kg |
| WB709HX | 9' / 2.74m | 155 cu/ft / 4.40m ³ | 1040mm | 11 | 1120kg |
| WB710HX | 10' / 3.05m | 173 cu/ft / 4.89m ³ | 1040mm | 12 | 1215kg |

HARDOX[®]
WEARPARTS

STRENX[™]
PERFORMANCE STEEL



WASTE BUCKET & CLAW

Overview

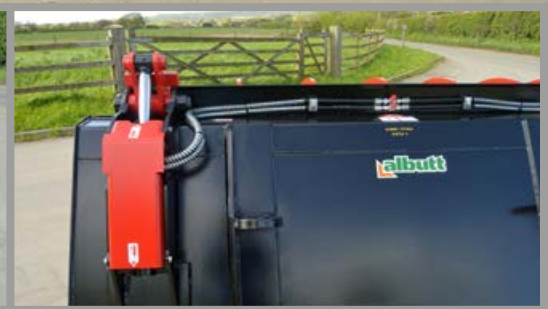
The Albutt Waste Bucket and Claw is designed to give a medium to heavy duty option for moving low density materials such as paper and cans. The grab is shallow compared to similar models, keeping material compact within the bucket itself. For further security, a mesh fill can be added between the grab tines.

Features

- Heavy duty waste bucket with claw
- Claw fits close to bucket sides to contain loose materials inside the bucket
- Ideal to handle low density materials, paper, cardboard, plastic and cans
- One piece claw with close spaced tines.
- Heavy duty bucket with 500 Brinell cutting edge
- Optional bolt on cutting edge
- Optional mesh fill to grab

Models

| Model | Width | Capacity | Claw Tines | Weight |
|------------|--------------|-------------------------------|------------|--------|
| WA053-76BC | 7'6" / 2.30m | 53 cu/ft / 1.50m ³ | 8 | 800kg |
| WA073-76BC | 7'6" / 2.30m | 73 cu/ft / 2.07m ³ | 8 | 1020kg |
| WA078-80BC | 8' / 2.44m | 78 cu/ft / 2.21m ³ | 8 | 1090kg |



WASTE BUCKET & POWER GRAB

Overview

The Albutt Waste Bucket and Grab is designed to provide a medium to heavy duty solution for waste handling. The high capacity rams are protected by bolt on covers with high grade pins used throughout. The grab pins and ram seals are also protected by the use of grab stops which prevent over extension of the grab. A heavy duty bucket features a rolled back and large corner gussets.

Features

- Grab pivots bushed with self-lubricating bushes
- Hydraulic rams bushed
- Hydraulic ram guards
- Rams and pins protected with grab stops
- Suitable for use with telehandlers
- Welded cutting edge 500 Brinell

Models

| Model | Width | Capacity | Height | Depth | Weight |
|------------|--------------|-------------------------------|--------|--------|--------|
| WA043-66BG | 6'6" / 2.00m | 43 cu/ft / 1.22m ³ | 786mm | 1010mm | 620kg |
| WA047-76BG | 7'6" / 2.30m | 47 cu/ft / 1.30m ³ | 786mm | 1010mm | 880kg |
| WA061-76BG | 7'6" / 2.30m | 61 cu/ft / 1.70m ³ | 910mm | 1130mm | 960kg |
| WA079-76BG | 7'6" / 2.30m | 79 cu/ft / 2.20m ³ | 950mm | 1350mm | 1000kg |
| WA082-80BG | 8' / 2.44m | 82 cu/ft / 2.35m ³ | 950mm | 1350mm | 1180kg |



WASTE KING COMPACT BUCKET GRAB

Overview

The Albutt Waste King Compact Bucket Grab is built on the same principle heavy duty design as it's bigger counterpart but specifically for compact loadalls. For use in the high intensity applications of waste and recycling , the grab has a host of features which give a longer operating life compared to standard bucket grabs. In the Waste King name, the grab is built using high tensile steels Hardox and Strenx.

Features

- Strenx steel shell; maximum strength at minimum weight
- Hardox grab tines
- Split two piece grab; ideal for uneven loads
- Bolt on 1 piece cutting edge; HB500 Brinell
- Bolt in side plates
- 50mm grab pivots in pre lubricated bushes
- Ram pivots 35mm, ram ends bushed
- Armoured hydraulic hoses
- Integral spill guard
- Heavy duty design for long term reliability
- Rolled bucket back
- See through spill guards
- Wide opening grab

Models

| Model | Width | Capacity | Height | Depth | Weight |
|------------|------------|-------------------------------|--------|-------|--------|
| WA027-60WG | 6' / 1.83m | 27 cu/ft / 0.76m ³ | 920mm | 860mm | 650kg |





WASTE KING BUCKET GRAB

Overview

The Albutt Waste King Bucket Grab offers unrivalled strength and durability in the Waste Attachment market. By incorporating high tensile materials such as Strenx and Hardox, the grab is renowned for its heavy duty build quality. When performance is your deciding factor, a host of features make the Waste King the obvious option.

Features

- High tensile Strenx steel body
- Integral spill guard
- 50mm grab pivots with self lubricating bushes
- Hydraulic rams bushed
- Armoured hoses
- Hydraulic rams protected by bolt on ram guards
- 3 piece HB500 bolt on reversible toe plate
- Split two piece grab; ideal for uneven loads
- Hydraulic rams cushioned
- Genuine Hardox Grab tines
- Used and trusted by some of the Waste and Recycling industry's leading names
- Wear strips underneath the bucket

Models

| Model | Width | Capacity | Height | Depth | Weight |
|------------|--------------|-------------------------------|--------|--------|--------|
| WA052-76WG | 7'6" / 2.30m | 52 cu/ft / 1.50m ³ | 1070mm | 1300mm | 1050kg |
| WA062-80WG | 8' / 2.44m | 62 cu/ft / 1.75m ³ | 1070mm | 1300mm | 1150kg |
| WA072-76WG | 7'6" / 2.30m | 72 cu/ft / 2.00m ³ | 1250mm | 1500mm | 1190kg |
| WA082-80WG | 8' / 2.44m | 82 cu/ft / 2.30m ³ | 1250mm | 1500mm | 1250kg |
| WA089-88WG | 8'8" / 2.64m | 89 cu/ft / 2.51m ³ | 1250mm | 1500mm | 1410kg |

HARDOX[®]
WEARPARTS

STRENX[™]
PERFORMANCE STEEL

WEIGHTS OF MATERIALS

| Material | KG / Cum | % Fill |
|---------------------|-----------------|--------|
| AGGREGATE (BRICK) | 1820 | 100 |
| ASHES | 600 | 85 |
| ASPHALT | 1600 | 100 |
| BEEF PULP (NUTS) | 600 | 85 |
| BEEF PULP (PRESSED) | 900 | 110 |
| BREWERS GRAINS | 1110 | 85 |
| BRICK AGGREGATE | 1830 | 100 |
| BRICKS (COMMON) | 2,450 PER 1,000 | |
| BRICKS (FACING) | 2,700 PER 1,000 | |
| CEMENT (NATURAL) | 895 | 100 |
| CEMENT (PORTLAND) | 1440 | 100 |
| CHALK | 2200 | 100 |
| CLAY (FIRE) | 2080 | 100 |
| CLAY (WET) | 1880 | 110 |
| COAL (ANTHRACITE) | 896 | 100 |
| COAL (BITUMINOUS) | 1261 | 100 |
| COAL (CANNEL) | 1261 | 100 |
| COAL (NEWCASTLE) | 1261 | 100 |
| COAL (WELSH) | 1311 | 100 |
| COKE (LOOSE) | 597 | 85 |

| | | |
|----------------------|------|-----|
| COKE (PETROLEUM) | 700 | 85 |
| COPPER (CONCENTRATE) | 2300 | 85 |
| EARTH (DRY LOOSE) | 1112 | 100 |
| EARTH (WET PACKED) | 1550 | 110 |
| FERTILISER (MIXED) | 1000 | 85 |
| FERTILISER (NITRATE) | 1250 | 85 |

THESE FIGURES ARE APPROXIMATE FOR USE AS A GUIDE TO MATERIAL DENSITY

WEIGHTS OF MATERIALS

| Material | KG / Cum | % Fill |
|---------------------|----------|--------|
| FLOUR | 440 | 85 |
| GLASS | 2600 | 85 |
| GRANITE CHIPPINGS | 2655 | 85 |
| GRAVEL (DRY) | 1700 | 85 |
| LIME (QUICK LOOSE) | 850 | 100 |
| LIMESTONE (CRUSHED) | 1526 | 100 |
| MANURE (FARMYARD) | 900 | 85 |
| MORTAR | 1600 | 100 |
| OATS | 410 | 85 |
| PEAT (DRY) | 400 | 100 |
| POTATOES | 690 | 85 |
| RUBBLE | 1025 | 100 |
| REFUSE (DRY) | 398 | 100 |
| SAND (DRY) | 1550 | 100 |
| SAND (WET) | 1900 | 110 |
| SAWDUST | 250 | 110 |
| SILAGE (ENSILED) | 730 | 110 |
| SILAGE (GREEN) | 340 | 110 |
| SLATE | 2723 | 100 |
| SLURRY | 1740 | 85 |

| | | |
|------------------------------|------|-----|
| SNOW (FRESH) | 141 | 110 |
| SNOW (WET) | 514 | 110 |
| SODIUM CHLORIDE (DRY) (SALT) | 1300 | 85 |
| SUGAR BEET | 54 | 100 |
| TURNIPS | 540 | 100 |
| WHEAT | 730 | 85 |

THESE FIGURES ARE APPROXIMATE FOR USE AS A GUIDE TO MATERIAL DENSITY

| Measurement | Equates to |
|----------------------|---------------------|
| CUBIC FEET X 0.0283 | CUBIC METRES |
| CUBIC FEET X 28.3 | LITRE |
| CUBIC METRE ÷ 0.0283 | CUBIC FEET |
| CUBIC METRE | 1.31 CUBIC FEET |
| CUBIC METRE | 35.32 CUBIC FEET |
| CUBIC METRE | 1,000 LITRES |
| KILOGRAMME | 2.2 POUNDS |
| METRIC TONNE | 0.984 TONS IMPERIAL |
| 25.4 MM | 1 INCH |
| 4.5461 LITRES | 1 GALLON |

TERMS

All quotations and orders accepted by Albutt are subject to our terms and conditions of business. An excerpt is shown below, a full copy is available from our sales office on request.

ORDERS

Orders must be forwarded in writing, by fax or email. No responsibility is accepted by Albutt for goods supplied incorrectly if a written order is not received.

PRICES

All previous price lists are cancelled. All prices quoted in this brochure include delivery to our dealer's premises on the UK mainland. Deliveries to locations including: Scottish Highland – Grampian regions and destinations outside the UK mainland, will attract an additional delivery charge. Prices are exclusive of VAT and are recommended retail prices. All equipment is supplied at the price ruling at the date of despatch. Unless otherwise stated all prices are inclusive of brackets.

PAYMENT

Invoices are to be settled in full by the 30th day of the month following the date of invoice.

SPECIFICATIONS

All capacities, sizes and weights in this brochure are approximate. Albutt reserve the right to alter specifications without notice or consultation. Provisions & Use of Work Equipment regulations (1998) specify it is the responsibility of the purchaser to ensure that the requirements of these regulations are met when purchasing Albutt products for their specific requirements.

DELIVERY

Albutt accept no liability for any delay in delivery or the consequences of any such delay.

RETURNS

Albutt regret that no goods can be returned without authorisation and any such returns will be subject to a handling charge.

TITLE

All goods shall remain the property of Albutt until the Customer has paid in full the whole of the contract price.

While the goods remain in the ownership of Albutt, the Customer shall keep them and insure them against damage, destruction or theft for their full value and return them to Albutt on demand. Any proceeds of an insurance claim in this connection shall belong to Albutt for whom the Customer shall hold the same in trust. The Customer is expressly prohibited from creating any mortgage, charge lien or other encumbrance adverse to the title of Albutt.

GUARANTEE

All new equipment is warranted for a period of twelve months from date of delivery. Our guarantee does not apply to any parts which are not of our make, these parts will be subject to the supplier's warranty. Albutt shall not be liable in any circumstances for any loss, injury or expense, whether direct or indirect, which may arise for any reason whatsoever in connection with any goods supplied or work done by Albutt.

WARRANTY

Rectification work should not be actioned without authorisation from Albutt. Our warranty may require equipment to be returned to the manufacturer – Albutt.

A price must be agreed and an order number issued before proceeding.

- A copy of our full terms and conditions of sale is available from our sales office.

RETAIL PRICES

Pages 8

| Model | RRP (£) |
|-----------|---------|
| A197-96GB | £4 552 |
| A171-96GB | £4 012 |
| A190-90GB | £4 313 |
| A162-90GB | £3 420 |
| A141-90GB | £3 018 |
| A129-90GB | £2 629 |
| A179-86GB | £4 058 |
| A152-86GB | £3 271 |
| A133-86GB | £2 936 |
| A120-86GB | £2 502 |
| A112-86GB | £2 426 |
| A100-86GB | £2 277 |
| A144-80GB | £3 241 |
| A125-80GB | £2 863 |
| A115-80GB | £2 347 |
| A105-80GB | £2 426 |
| A095-80GB | £2 199 |
| A075-80GB | £1 618 |
| A135-76GB | £2 899 |
| A095-76GB | £2 115 |
| A089-76GB | £2 056 |
| A070-76GB | £1 554 |

Pages 9-10

| Model | RRP (£) |
|---------|---------|
| A075-80 | £1 618 |
| A063-80 | £1 554 |
| A056-80 | £1 422 |
| A043-80 | £1 346 |
| A032-80 | £1 284 |
| A070-76 | £1 554 |
| A060-76 | £1 486 |
| A053-76 | £1 339 |
| A040-76 | £1 269 |
| A030-76 | £1 260 |
| A066-70 | £1 635 |
| A056-70 | £1 486 |
| A049-70 | £1 302 |
| A044-70 | £1 264 |
| A037-70 | £1 235 |
| A028-70 | £1 218 |
| A042-66 | £1 339 |
| A035-66 | £1 303 |
| A026-66 | £1 233 |
| A038-60 | £1 367 |
| A032-60 | £1 310 |
| A024-60 | £1 235 |

Pages 10-11

| Model | RRP (£) |
|-----------|---------|
| A026-50 | £1 223 |
| A018-47 | £1 157 |
| A016-40 | £1 142 |
| A197-96HD | £5 478 |
| A171-96HD | £5 320 |
| A190-90HD | £4 189 |
| A162-90HD | £4 097 |
| A141-90HD | £3 809 |
| A129-90HD | £3 440 |
| A063-90HD | £2 856 |
| A179-86HD | £4 760 |
| A152-86HD | £4 043 |
| A133-86HD | £3 540 |
| A120-86HD | £3 193 |
| A112-86HD | £2 977 |
| A100-86HD | £2 591 |
| A060-86HD | £2 591 |



Pages 12-13

| Model | RRP (£) |
|-----------|---------|
| A144-80HD | £4 213 |
| A125-80HD | £3 551 |
| A115-80HD | £3 149 |
| A105-80HD | £3 004 |
| A095-80HD | £2 648 |
| A075-80HD | £2 189 |
| A063-80HD | £2 158 |
| A056-80HD | £2 070 |
| A043-80HD | £1 909 |
| A032-80HD | £1 902 |
| A070-76HD | £2 116 |
| A060-76HD | £2 058 |
| A053-76HD | £1 914 |
| A040-76HD | £1 786 |
| A066-70HD | £1 953 |
| A056-70HD | £2 013 |
| A049-70HD | £1 847 |
| A044-70HD | £1 803 |
| A037-70HD | £1 720 |
| A130-90HT | £8 388 |
| A104-90HT | £5 799 |
| A123-86HT | £7 767 |

Pages 13-16

| Model | RRP (£) |
|--------------|---------|
| A098-86HT | £5 689 |
| A116-80HT | £7 206 |
| A092-80HT | £5 484 |
| A070-76HT | £4 172 |
| A050-76HT | £3 520 |
| A042-70HT | £3 274 |
| A035-70HT | £3 172 |
| A025-66HT | £2 711 |
| WA130-90HTBL | £12 350 |
| WA104-90HTBL | £8 557 |
| WA123-86HTBL | £11 162 |
| WA098-86HTBL | £8 425 |
| WA116-80HTBL | £10 431 |
| WA092-80HTBL | £8 000 |
| WA070-76HTBL | £5 979 |
| WA050-76HTBL | £5 068 |
| WA042-70HTBL | £4 728 |
| WA035-70HTBL | £4 568 |
| WA025-66HTBL | £3 904 |
| A085-80BGHX | £4 559 |
| A059-80BGHX | £3 856 |
| A081-76BGHX | £4 344 |

RETAIL PRICES

Pages 16-24

| Model | RRP (£) |
|--------------|---------|
| A055-76BGHX | £3 828 |
| A051-70BGHX | £3 782 |
| A048-66BGHX | £3 677 |
| A043-60BGHX | £3 668 |
| A028-80CS | £3 881 |
| A026-76CS | £3 648 |
| A020-72CS | £3 542 |
| A018-66CS | £3 460 |
| A015-57CS | £3 304 |
| A011-53CS | £2 512 |
| A009-411CS | £2 440 |
| A089-80CS-BL | £7 334 |
| A070-76CS-BL | £7 059 |
| A035-60TLT | £1 697 |
| A025-50TLT | £1 567 |
| A021-43TLT | £1 529 |
| A038-51BGBL | £3 428 |
| A028-50HT | £3 284 |
| BF500** | £2 706 |
| BF600** | £2 793 |
| BF1000** | £3 275 |

Pages 26-34

| Model | RRP (£) |
|----------|---------|
| SB40 | £2 035 |
| SB60 | £2 035 |
| SB80 | £2 035 |
| SB100 | £2 035 |
| V7-1800 | £1 640 |
| V7-2400 | £1 880 |
| B808PPHX | £6 257 |
| B809PPHX | £6 373 |
| B810PPHX | £6 661 |
| B812PPHX | £7 651 |
| B808PP | £5 223 |
| B809PP | £5 345 |
| B810PP | £5 570 |
| B912HX | £8 241 |
| B914HX | £8 379 |
| B916HX | £8 635 |
| B708HX | £3 677 |
| B709HX | £3 819 |
| B710HX | £4 023 |
| B908HXF | £4 117 |
| B909HXF | £4 399 |
| B910HXF | £5 268 |

Pages 34-40

| Model | RRP (£) |
|---------|---------|
| B912HXF | £5 444 |
| B566HX | £2 497 |
| B570HX | £2 517 |
| B576HX | £2 607 |
| B580HX | £2 778 |
| B590HX | £2 959 |
| B466 | £2 002 |
| B470 | £2 023 |
| B476 | £2 092 |
| B480 | £2 221 |
| C366HX | £1 970 |
| C370HX | £1 990 |
| C376HX | £2 044 |
| C366 | £1 780 |
| C370 | £1 818 |
| C376 | £1 839 |
| E324HX | £1 041 |
| E340HX | £1 051 |
| E360HX | £1 161 |
| E380HX | £1 192 |
| E400HX | £1 212 |
| E410HX | £1 235 |

Pages 40-44

| Model | RRP (£) |
|---------|---------|
| E324 | £1 030 |
| E340 | £1 041 |
| E360 | £1 149 |
| E380 | £1 182 |
| E400 | £1 203 |
| E410 | £1 224 |
| B666HXG | £4 483 |
| B670HXG | £4 504 |
| B676HXG | £4 620 |
| B680HXG | £4 929 |
| B690HXG | £5 574 |
| C560HXG | £3 064 |
| C566HXG | £3 122 |
| C570HXG | £3 285 |
| C576HXG | £3 288 |
| C580HXG | £3 381 |
| C560 | £2 958 |
| C566 | £3 012 |
| C570 | £3 115 |
| C576 | £3 169 |
| C580 | £3 271 |

Pages 46-50

| Model | RRP (£) |
|------------|---------|
| E324HXG | £2 203 |
| E340HXG | £2 217 |
| E360HXG | £2 275 |
| E380HXG | £2 343 |
| E400HXG | £2 427 |
| E410HXG | £2 457 |
| E324G | £2 071 |
| E340G | £2 081 |
| E360G | £2 122 |
| E380G | £2 179 |
| E400G | £2 248 |
| E410G | £2 281 |
| S130** | £2 256 |
| S160** | £2 636 |
| S190** | £3 531 |
| S220** | £3 759 |
| S160HX** | £2 841 |
| S190HX** | £3 785 |
| S220HX** | £4 030 |
| SKM190HX** | £6 111 |
| SKM220HX** | £6 378 |
| SKM250HX** | £6 610 |

RETAIL PRICES

Pages 50-60

Pages 60-70

Pages 72-79

Pages 79-86

Pages 86-98

| Model | RRP (£) | Model | RRP (£) | Model | RRP (£) | Model | RRP (£) | Model | RRP (£) |
|-------------|---------|-----------------|---------|-----------|---------|-------------|---------|------------|---------|
| SK220HX** | £7 300 | SP84** | £2 471 | F450** | £1 800 | P340PF | £1 410 | TS17 | £1 159 |
| SK250HX** | £7 541 | SP84H** | £2 685 | F470** | £5 549 | P450PF | £1 578 | BS11 | £1 500 |
| SB190HX** | £4 760 | SP92** | £2 790 | F410** | £1 432 | P600PF | £2 625 | BS14 | £1 603 |
| SB220HX** | £4 940 | SP92H** | £2 998 | LG055** | £2 266 | G350JCB | £903 | ES25 | £2 817 |
| SKMB190HX** | £6 946 | ES100 Euro | £399 | LG105** | £2 374 | G400JCB | £936 | M200 | £860 |
| SKMB220HX** | £7 079 | CS100 Pin Cone | £515 | LG405** | £3 708 | G500JCB | £989 | M400 | £1 221 |
| SKMB250HX** | £7 456 | CS100 JCB Q Fit | £473 | LG500 | £3 708 | P151PF | £1 297 | M400GV | £1 330 |
| SKB220HX** | £9 800 | CS100 Manitou | £485 | WR5250HXG | £4 422 | P251PF | £1 346 | M600 | £2 017 |
| SKB250HX** | £10 120 | CS100 Merlo | £473 | WR6260HXG | £4 738 | P351PF | £1 454 | M600GV | £2 017 |
| BL1 - 1000 | £1 153 | F100** | £364 | WR7270HXG | £5 054 | P451PF | £1 494 | WA180-90HD | £4 719 |
| BL2 - 1000 | £1 219 | F110** | £483 | WR8280HXG | £5 287 | P601PF | £1 755 | WB676HXG | £6 156 |
| BL4 - 600 | £1 305 | F131** | £900 | LG700 | £5 057 | G400MERLO | £595 | WB680HXG | £6 378 |
| BL4 - 1000 | £1 474 | F131FT** | £1 548 | LG800 | £7 421 | LJ4000 | £2 075 | WB690HXG | £6 625 |
| BL4H - 1000 | £2 565 | F125** | £1 343 | P150 | £869 | FMH 900 2.0 | £745 | WB808PPHX | £6 732 |
| H101** | £1 789 | F501** | £2 600 | P200 | £889 | FMH 900 3.0 | £852 | WB809PPHX | £6 928 |
| H121** | £1 867 | F650K/HX** | £4 529 | P250 | £1 001 | FMH 900 5.0 | £918 | WB810PPHX | £7 108 |
| H141** | £1 919 | F140A** | £1 745 | P340 | £1 045 | FMH A2.0 | £551 | WB708HX | £4 524 |
| YS30GV** | £2 038 | F150A** | £4 112 | P450 | £1 223 | FMH A3.0 | £638 | WB709HX | £4 672 |
| YS50GV** | £2 093 | F155A** | £4 458 | P600 | £1 740 | FMH A4.0 | £729 | WB710HX | £4 916 |
| SP53** | £2 289 | F160A** | £3 765 | P150PF | £1 159 | FMH A5.0 | £836 | WA053-76BC | £3 919 |
| SP70** | £2 419 | F301** | £1 332 | P200PF | £1 179 | TS11 | £1 077 | WA073-76BC | £4 109 |
| SP70H** | £2 639 | F352** | £1 397 | P250PF | £1 272 | TS13 | £1 125 | WA078-80BC | £4 339 |

RETAIL PRICES & BOLT ON BRACKETS

Pages 100-104

| Model | RRP (£) |
|------------|---------|
| WA043-66BG | £4 612 |
| WA047-76BG | £4 685 |
| WA061-76BG | £5 285 |
| WA079-76BG | £5 894 |
| WA082-80BG | £6 012 |
| WA027-60WG | £5 200 |
| WA052-76WG | £6 067 |
| WA062-80WG | £6 324 |
| WA072-76WG | £6 541 |
| WA082-80WG | £7 035 |
| WA089-88WG | £7 679 |

Bolt on Brackets

For some attachments we recommend the Albutt Bolt on Brackets system. This will ensure the attachment has the correct working angles, strength and design for maximum usability and performance.

Albutt Bolt On Brackets £333.00 RRP

Excluding Merlo, JCB Volvo & JCB Teletruk £466.00 RRP



** plus bolt on brackets



