

**INSTRUCTION MANUAL  
AND  
PARTS CATALOGUE  
FOR**

**THE ALBUTT RANGE OF  
LG LOG GRABS  
LG055 / LG105 / LG405 / SITEPRO**

**THIS MUST BE USED IN CONJUNCTION WITH ALBUTT'S  
GENERAL OPERATOR'S MANUAL**

# CONTENTS

Certificate.....	3
Safety Instructions.....	4-7
Operating Instructions.....	8
Parts Lists.....	9



**EU CERTIFICATE OF CONFORMITY**

CONFORMING TO EC Machinery Directive 2006/42 EC

**We:**

Albutt Limited  
Great Washbourne  
Tewkesbury  
Glos. UK  
GL20 7AR



declare in sole responsibility, that the product

**Type: Log Grab LG055/LG105/LG405**

to which this certificate applies, conforms to the basic safety  
and health requirements of the EC Machinery Directive 2006/42 EC,  
and the Transposed Harmonised Standards:

BS EN 1553 (2000)

A handwritten signature in black ink, appearing to read "A. D. Albutt".

Alistair Albutt

**Managing Director**



# SAFETY INSTRUCTIONS

**IMPORTANT – READ BEFORE USE**

This manual is provided to assist you in getting the best results from your machine and ensure that you do so safely. If you have any queries about the use of the machine contact your dealer before use. Please keep this manual for future reference.

## **1.1 FUNDAMENTAL PRECAUTIONS**

On delivery, your dealer gave you an explanation of the operation and maintenance of this Albutt Log Grab/Site Pro. Please read and understand these operating instructions before operating the machine for the first time. It is essential that you observe all safety instructions.

Incorrect use or mishandling of the machine can endanger:  
Life and Limb of the operator, other persons or animals within the vicinity of the machine.  
The machine and other material assets of the owner or third persons.  
The performance of the machine.

Anyone who is involved in the commissioning, operation or maintenance of the timber grapple must read and understand these instructions very carefully and observe them at all times.

**NEVER DISTRACT ANYONE WHO IS USING A MACHINE.**

## **1.2 AUTHORISED OPERATORS**

Youths under the age of 16 must not operate this implement. The owner of the machine must provide the operator with the operating instructions and make sure they have read and understood them. Only then may the machine be put into operation.

The owner must ensure that only authorised persons operate/work on this machine. He is responsible for keeping any third persons or animals out of the working area of the machine.

**THE OPERATOR MUST BE FULLY TRAINED BEFORE USING THE IMPLEMENT.**

**A SAFE DISTANCE OF AT LEAST 10M MUST BE OBSERVED BY ANYONE WITHIN THE VICINITY OF THE LOG GRAB.**

We recommend that genuine Albutt bolt on brackets are used on Log Grabs.  
Any weld on brackets which adversely affect the structure of the product and may invalidate warranty. Site Pro's will have brackets welded on from factory despatch.



### 1.3 HYDRAULIC SAFETY

**CAUTION** The hydraulic system is under high pressure.

Ensure that only high-pressure hoses are used to connect supply to the Log Grab/Site Pro. Check hoses regularly and renew any that are damaged or worn. Hydraulic supply should not exceed 250 Bar and 80 L/min.

Before working on the hydraulics release the pressure from the system and stop the tractor engine.

Make sure that the hydraulic hoses are coupled correctly. Pressure should be released from the system both on the tractor and on the implement side prior to coupling the hoses to the tractor hydraulics.

**CAUTION** Hydraulic oil forced out under pressure can break the skin and cause severe injury. In the event of a hydraulic oil leak stop the tractor flow immediately. **DO NOT PUT HANDS NEAR A LEAKING PIPE.**



#### 1.4 GENERAL SAFETY AND ACCIDENT PREVENTION REGULATIONS

Ensure the implement is correctly and securely attached to the operating vehicle.

**NEVER** attach to a tractor which would be rendered unstable when the implement is operated at its full capacity. Take note of the maximum load permissible on linkage arms.

Take extra care when operating machinery on sloping ground. **NEVER** operate on ground where there is a risk of the tractor becoming unstable.

When detaching the implement from the tractor always ensure that it is stable and safely positioned on a level surface.

The attaching and detaching of the implement to a tractor must be carried out by only one operator. There should not be any other people in the vicinity of the implement or in the tractor.

Before operation make yourself familiar with all elements and controls of the machine as well as their functions.

Before operation inspect the area around you. Keep children away. All visitors and unauthorised persons should be kept well away from work area.

**Under NO circumstances** should anyone, authorised or otherwise attempt to use the timber grapple as a means of personal transport. It is designed as specialist purpose farm implement and is unsuitable for the safe transportation of passengers. **NEVER** allow anyone especially children to travel anywhere between the tractor and an implement.

**ENSURE** the implement does not restrict the forward vision or important sightlines of the operator if mounted on the front of the tractor.

**ENSURE** that the operator is aware of the overhang when the implement is mounted on the front of the tractor. **EXTREME CAUTION** must be taken when emerging onto the public roads.

**NEVER** attempt to move this implement manually.

To ensure stability the Log Grab/Site Pro should be stored in a safe position, supported to prevent it being knocked over.

If the implement is to be transported on a trailer then it should be securely attached using suitable restraints.

## 1.5 MAINTENANCE

Stop the tractor engine and disconnect hydraulic hoses from Log Grab/Site Pro prior to carrying out maintenance, servicing, cleaning or repair work. **ALWAYS** remove the ignition key.

The manufacturer will not be responsible for any damages or injuries caused by unauthorised repair, alterations or mishandling of the product.

Maintain product with care. Check periodically for damage that would affect the safe operation of the implement.

**ALWAYS** ensure all warning stickers are kept clean and in good condition.

Regularly check all bolts and tighten if necessary.

Lubricate the hydraulic cylinder and pivot pin daily before use.

Only use clean grease complying to Din51502

Clean all grease nipples and the nozzle of the grease gun before lubrication





## **OPERATING INSTRUCTIONS**

The intended use for the Albutt Log Grab is the safe handling of cut timbers. The Site Pro can also be used for this application.

Adhering to the safety instructions included, lower the Log Grab/Site Pro so the base tines are just above the ground. Operating the hydraulic service from your machine's joystick, open the grab of the Log Grab/Site Pro to its complete open position and drive towards the pile of timbers you wish to handle. When the grab is completely into said pile, close the grab fully by operating the hydraulic service on your machine's joystick and then crowd the grab back and raise the boom slightly. This will give a more secure carry position. From here, drive to the required place, taking caution not to loose any timbers and drive over them. Open the attachment's grab and dump it forward with caution to allow the timbers to gently fall into position.

The Site Pro can handle various other materials such as brash, tyres, waste, rubble etc by operating in the same way.

The Site Pro can also be used to back grade. To do this 'boom out' your machine's boom to the required position. Fully open the Site Pro's grab and dump the headstock forward so the Site Pro is parallel with the ground. From here, boom down slightly so the grab tines enter the ground and proceed to reverse backwards at a slow pace.

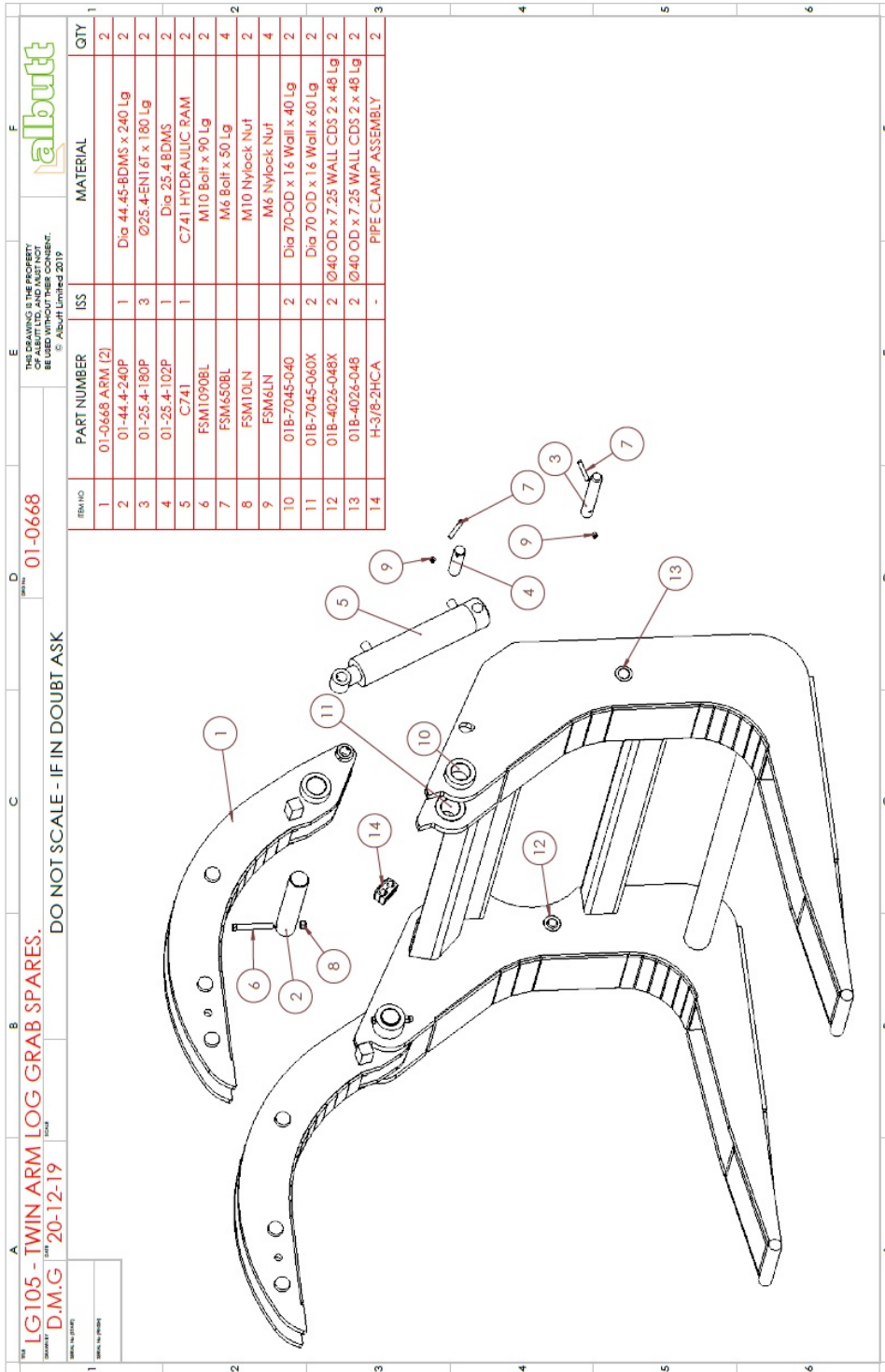
These products must only be used for this purpose and under no circumstances should be used as a lifting device or access platform.



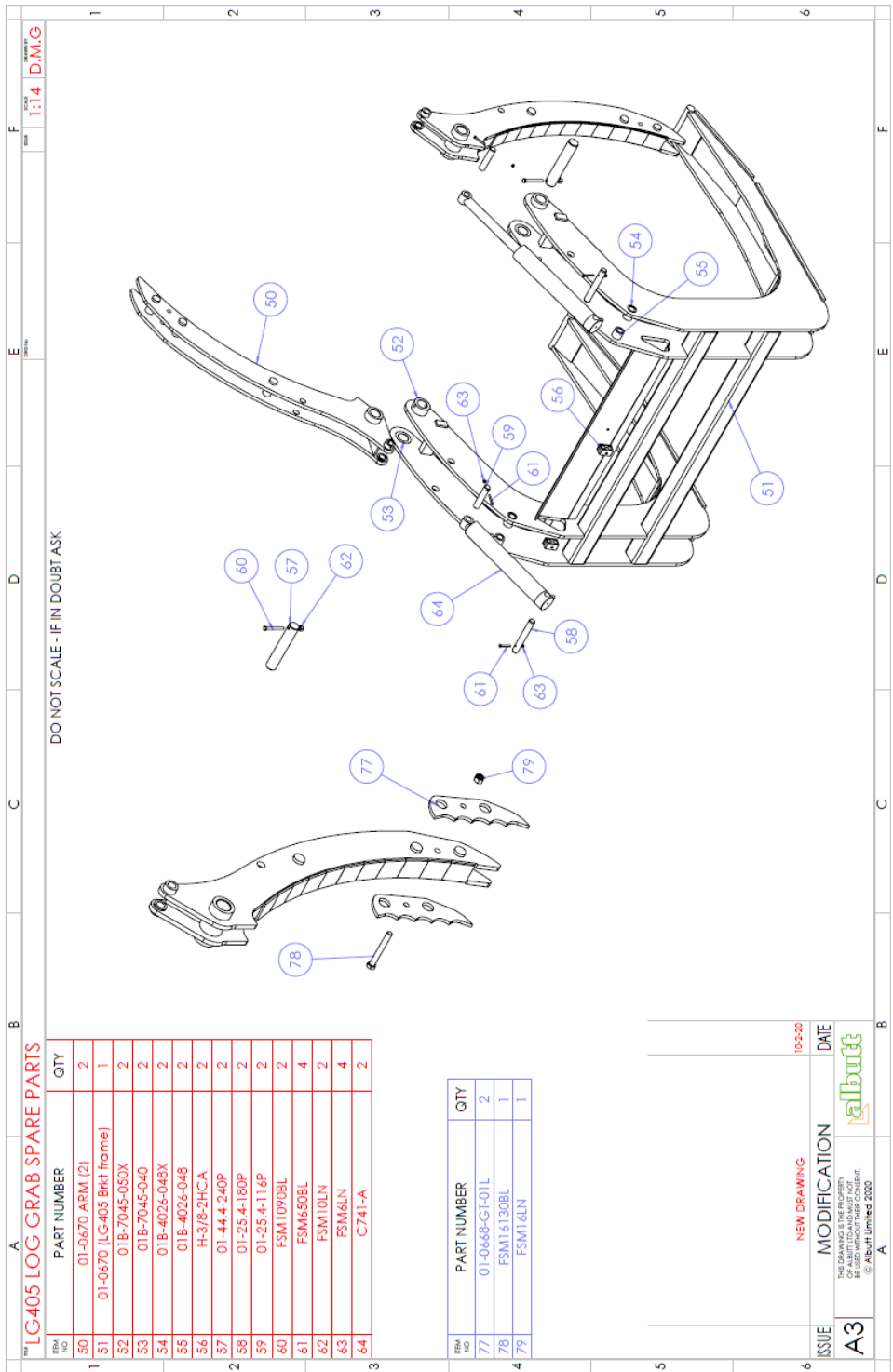




## 1.7 SPARE PARTS LG105



# 1.8 SPARE PARTS LG405



# 1.9 SPARE PARTS SITE PRO

