

INSTRUCTION MANUAL AND PARTS CATALOGUE FOR

THE ALBUTT RANGE OF SHEAR BUCKETS

**THIS MUST BE USED IN CONJUNCTION WITH THE
ALBUTT GENERAL OPERATOR'S MANUAL**

CONTENTS

Introduction.....	4
Technical Data.....	4
Safety Instructions.....	5
Operating Instructions.....	6
Maintenance.....	7
Sharpening the blades.....	7
Storage.....	8
Parts Diagrams.....	9-10
Warning Stickers.....	11



The shear grab blades must be checked and sharpened as required at least once weekly using a file

EU CERTIFICATE OF CONFORMITY

CONFORMING TO EC Machinery Directive 2006/42 EC

We:

Albutt Limited
Great Washbourne
Tewkesbury
Glos. UK
GL20 7AR



declare in sole responsibility, that the products

Type: SKMB190HX, SKMB220HX, SKMB250HX

to which this certificate applies, conforms to the basic safety
and health requirements of the EC Machinery Directive 2006/42 EC,
and the Transposed Harmonised Standards:

BS EN 1553 (2000)

A handwritten signature in black ink, appearing to read "A. D. Albutt".

Alistair Albutt

Managing Director

INTRODUCTION

Shear King Mini Models

SKMB190HX	1.90m wide	(6'3")	Hardox tines
SKMB220HX	2.20m wide	(7'3")	Hardox tines
SKMB250HX	2.50m wide	(8'3")	Hardox tines

TECHNICAL DATA

Model	Rams	Centre Knife	Unladen Weight (kg)	Capacity m3	Height m	Depth m
SKMB190HX	2x115mm	No	1140	1.40	0.99	1.19
SKMB220HX	2x115mm	No	1253	1.60	0.99	1.19
SKMB250HX	2x115mm	No	1350	1.80	0.99	1.19

We recommend that genuine Albutt bolt on brackets are used on these attachments.

Any weld on brackets which adversely affect the structure of the product may invalidate warranty.

SAFETY INSTRUCTIONS

IMPORTANT – READ BEFORE USE | REMOVE TRANSPORT BOLTS BEFORE USE

INTENDED USE

The intended use of the Albutt Shear Bucket (SKMB190HX, SKMB220HX & SKMB250HX) is for the safe shearing of grass, maize or wholecrop silage from the face of a silage clamp. The bucket of the Albutt Bucket is for loading concentrates into a feeder wagon. It is not for clearing yards or scraping the floor. This product must only be used as described above and under no circumstances should be used as a lifting device or access platform.

SAFETY INSTRUCTIONS

Please read the following precautions before operating the equipment, and at intervals afterwards to refresh your memory. In particular be aware of the following:

Before fitting the equipment to the tractor, check that the combined weight of the Shear Bucket and the load of silage do not exceed the safe working load of the front axle and tyres of the tractor. It is important to ensure that the hydraulic capacity of the tractor is adequate.

Before carrying out any maintenance to the Shear Bucket, ensure that the tractor engine is switched off and the ignition key is removed, the parking brake is on and the Shear Bucket is supported.

- Never place your arms, legs hands or head in the machine!
- Check all bolts are tight and guards are secure. Check that there are no oil leaks.
- Make sure tractor engine is stopped and ignition key remove before connecting/disconnecting hydraulic hoses etc. Never start the tractor when hoses are open.
- Check hoses regularly for leaks or damage. If skin is in contact with hydraulic fluid seek medical advice immediately. Replace any worn or damaged hoses straight away.
- Traction is greatly reduced when the tractor is loaded on the front. Take extra care when turning or when on slippery or rough terrain.
- Ensure that the Grab is closed and lowered when travelling to shield the tines and blades.
- Wear heavy duty gloves when sharpening blades.
- Do not allow children or onlookers on or near the machine.
- Ensure the Grab is closed when not in use.
- We recommend that the attachment is placed on a trailer when travelling on the public highway.

OPERATING INSTRUCTIONS

HYDRAULIC SUPPLY MUST NOT EXCEED 207 BAR and 80L/min

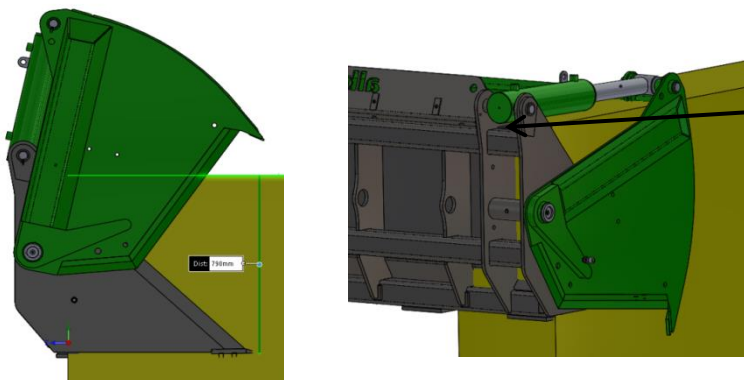
- Before use, check that the blades are clean and sharp. Lightly sharpen blades before first use.
- The operator should cut in one direction across the face from one side to the other. This will ensure a clean clamp face and avoid secondary fermentation.

The design of this Shear Bucket (instead of a Shear Grab) is to stop the loss of material between cutting and placing of the load and for the loading of concentrates. It is not for scraping yards, scraping silage floors or clearing out buildings. If it is used for these operations it will lead to damage of the Hardox blade/leading edge and cutting performance will be affected.

For Safe Operation:

- 1: The Shear Bucket should be opened and the floor levelled before being driven hard into the clamp face. The cutting edge should not exceed the dimension shown below from the top of the clamp to allow the cylinders to fully extend and allow the grab to fully close.
- 2: As the Shear Bucket hydraulics are operated, the rams will extend and the knives will cut down through the silage. Care must be taken to hold the bucket level and still, if necessary powering down the arms to lift the tractor and this weight will help hold the position.
- 3: When the Shear Bucket is fully closed, it should be lifted and crowded back to ensure a clean clamp face. If the grab will not fully close, reopen the grab, reverse out and start the procedure again.

This attachment is only designed for the removal of silage from a clamp or pit using the above procedure. It must not be used for any other operations .



Shear Bucket

Enter the pit face at no more than 790mm below the top surface of the desired block.

Use the top of the top box section as a guide for this.

MAINTENANCE

- All pivots should be greased regularly.
- Check all hydraulic items for signs of wear and leakage.
- Keep blades very sharp. Although the blades are of high quality steel, they must have regular attention. They may require a few minutes of gentle fine filing just to maintain the edges. Any nicks or burrs must be filed away.
- In the event of a serious irreparable damage to the Shear Grab knives, replacement blades may be fitted by cutting the blades away from the frame and new blades welded into position.

SHARPENING THE BLADES

- Using a 2nd cut flat file, place the file on the chamfered face of the blade and draw-file the blade face.
- DO NOT file the flat of the blade.
- ALWAYS ensure that heavy gloves are worn when sharpening the blade.
- **A ROTARY GRINDER MUST NOT BE USED TO SHARPEN BLADES AS THIS WILL DESTROY THE TEMPER OF THE STEEL.**



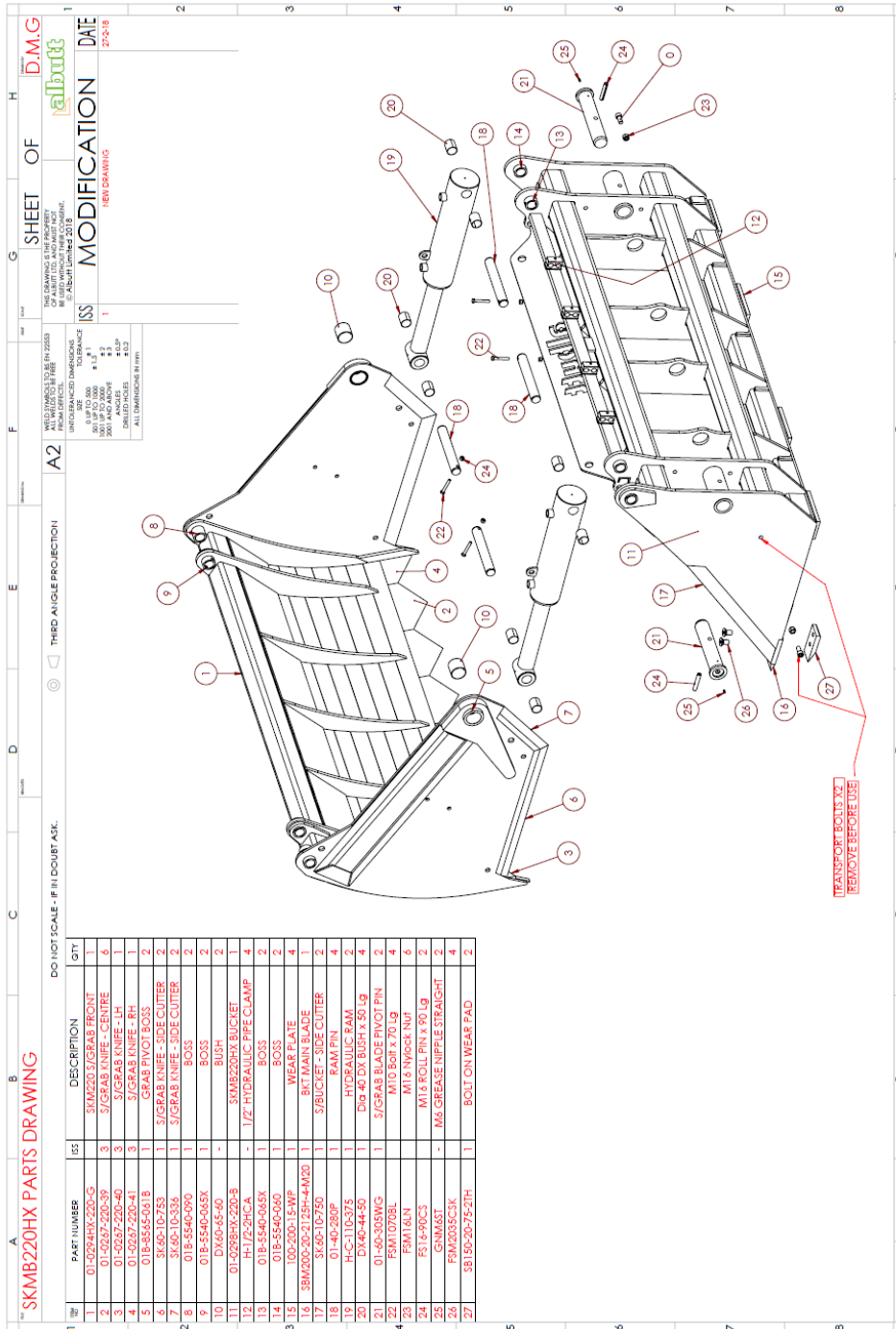
STORAGE

- Place the Shear Bucket on a level site. After stopping the engine and applying the brake, disconnect the Shear Bucket from the tractor. Clean the machine thoroughly and paint any bare metal. Apply grease to exposed ram rods when shear grab is not being used for a period longer than 7 days. Cover the machine with a waterproof cover.

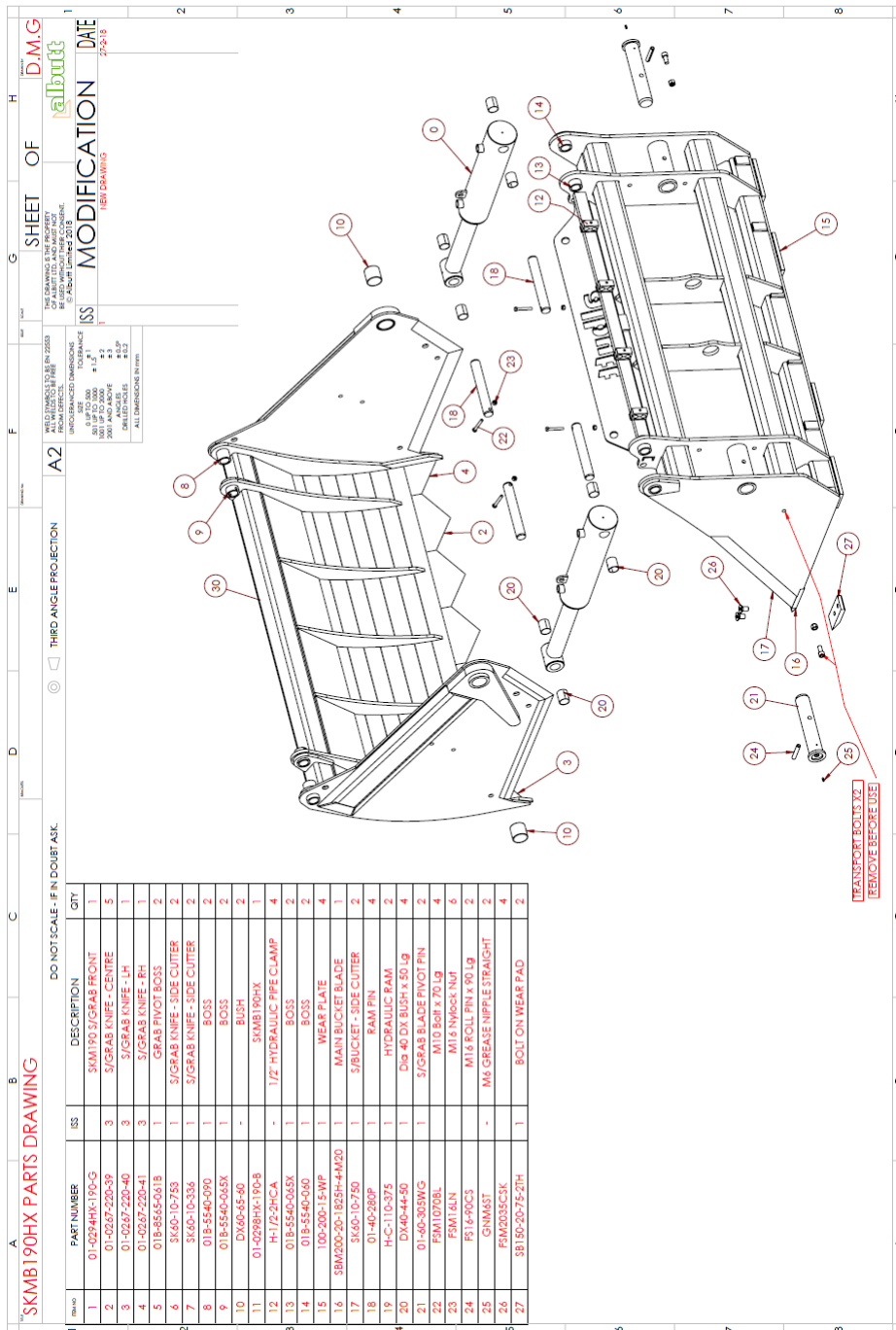


**REMOVE TRANSPORT
PINS BEFORE USE**

PARTS DIAGRAMS



PARTS DIAGRAMS



WARNING STICKERS - SHEAR BUCKET

