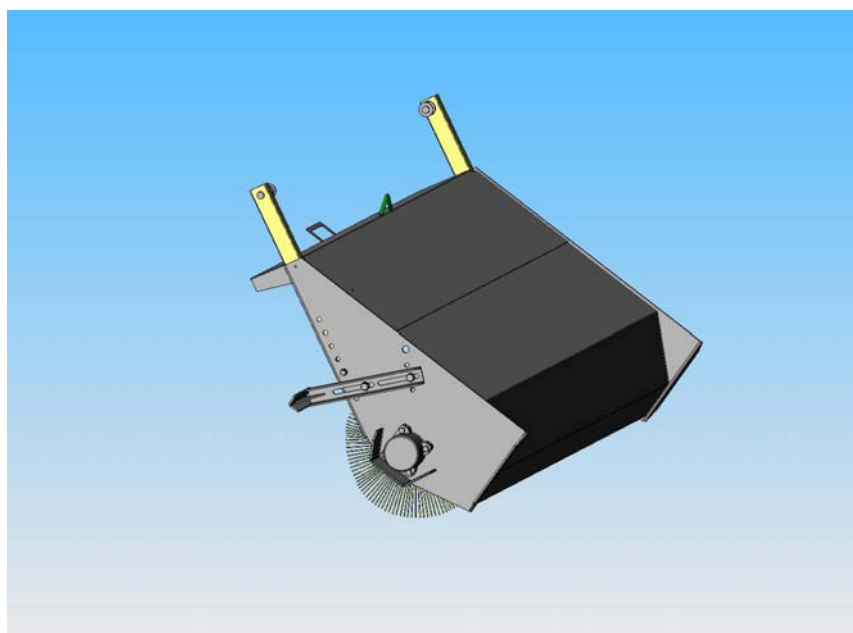


# OPERATOR'S MANUAL



MODEL SB40  
MODEL SB60  
MODEL SB80  
MODEL SB100



ISSUE 3 2013

ALBUTT BUCKET BRUSH

# Operator's Manual

---

The Sweeper units described throughout this Manual are identified by machine size, as follows:

SB40

SB60

SB80

SB100

Albutt Ltd  
Great Washbourne  
Nr Tewkesbury  
Glos GL20 7AR  
01242 620252/620656  
Website: [www.albutt.co.uk](http://www.albutt.co.uk)  
Email: [Alistair@albutt.co.uk](mailto:Alistair@albutt.co.uk)

## Table of Contents

<b><u>GENERAL INFORMATION AND SAFETY</u></b>	<b><u>Section 1</u></b>
<b><u>PRECAUTIONARY STATEMENT</u></b>	<b><u>1</u></b>
<b><u>PERSONAL SAFETY</u></b>	<b><u>1</u></b>
<b><u>CAUTION</u></b>	<b><u>1</u></b>
<b><u>WARNING</u></b>	<b><u>1</u></b>
<b><u>DANGER</u></b>	<b><u>1</u></b>
<b><u>MACHINE SAFETY</u></b>	<b><u>1</u></b>
<b><u>AVOID HIGH-PRESSURE FLUIDS</u></b>	<b><u>1</u></b>
<b><u>SAFETY DECALS</u></b>	<b><u>1</u></b>
<b><u>SPECIFICATIONS</u></b>	<b><u>2</u></b>
<b><u>AN INTRODUCTION TO THE ALBUTT BUCKET BRUSH</u></b>	<b><u>3</u></b>
<b><u>QUICK RELEASE BRACKET</u></b>	<b><u>4</u></b>
<b><u>FITTING BRACKETS &amp; ADJUSTING BRUSH</u></b>	<b><u>5</u></b>
<b><u>OPERATING INSTRUCTIONS</u></b>	<b><u>6</u></b>
<b><u>BRUSH CORE REMOVAL &amp; INSTALLATION</u></b>	<b><u>7</u></b>
<b><u>SPARES LIST</u></b>	<b><u>8</u></b>

---

# GENERAL INFORMATION AND SAFETY

## PLEASE READ CAREFULLY:

This section of the operator's manual contains important operating instructions and safety precautions to be observed in operating your unit. Read this manual and make sure you understand it before operating the machine. If there is anything you do not understand, see your Albutt dealer.

Your Albutt bucket brush has been designed and built to give good performance and ease of operation under a wide variety of operating conditions. Prior to delivery, the unit was carefully inspected at the factory to ensure that it reaches you in optimum condition. To maintain this condition and ensure trouble-free operation, it is important that routine services, as specified in this manual are carried out at recommended intervals.

*Albutt policy is one of continuous improvement and the right to change prices, specification or equipment at any time without notice is reserved.*

*All data given in this manual is subject to production variations. Dimensions and weight are approximate only and the illustrations do not necessarily show machines in standard condition. For exact information about any particular machine, please consult your Albutt dealer.*

## SAFETY PRECAUTIONS

### PRECAUTIONARY STATEMENTS

#### PERSONAL SAFETY

Throughout this manual and on machine decals, you will find precautionary statements (“CAUTION”, “WARNING”, and “DANGER”) followed by specific instructions. These precautions are intended for the personal safety of you and those working with you. Please take the time to read them.

#### CAUTION

**CAUTION:** The word “CAUTION” is used where a safe behavioural practice according to operating and maintenance instructions and common safety practices will protect the operator and others from accident involvement.

#### WARNING

**WARNING:** The word “WARNING” denotes a potential or hidden hazard, which has a potential for serious injury. It is used to warn operators and others to exercise every appropriate means to avoid a surprise involvement with machinery.

#### DANGER

**DANGER:** The word “DANGER” denotes a forbidden practice in connection with a serious hazard.

Failure to follow the “CAUTION”, “WARNING”, and “DANGER” instructions may result in serious bodily injury.

#### MACHINE SAFETY

Additional precautionary statements “NOTE”, “ATTENTION”, and “IMPORTANT” are followed by specific instructions. These statements are intended for machine safety.

**NOTE:** *This text stresses a correct operating technique or procedure.*

**ATTENTION:** *The word “ATTENTION” is used to warn the operator of potential machine damage if a certain procedure is not followed.*

**IMPORTANT:** *The word “IMPORTANT” is used to inform the reader of something he needs to know to prevent minor machine damage if a certain procedure is not followed.*

## SAFETY PRECAUTIONS

The following precautions are suggested to help prevent accidents.  
SEE SPECIFIC INSTRUCTIONS IN TEXT FOR DETAIL.

A careful operator is the best operator. Most accidents can be avoided by observing certain precautions. Read and take the following precautions before operating the Albutt bucket brush to prevent accidents. Equipment should be operated only by those who are responsible and instructed to do so.

### ALBUTT BUCKET BRUSH & PRIME MOVER

1. All persons who will operate the unit should read the Operator's Manual (both for the sweeper and prime mover) carefully before using the equipment. Lack of operating Knowledge can lead to accidents.
2. Permit only properly trained persons to operate the unit.
3. Do not permit anyone to ride on the unit.
4. Replace missing, illegible, or damaged safety decals. Refer to this section, pages 6 to 8, for illustrations of the decals.
5. Keep safety decals clean of dirt and grime.

### OUT OF WORK & SERVICING

1. Keep the Albutt bucket brush in good operating condition for your safety. An improperly maintained unit can be hazardous.
2. When servicing or parking unit, ensure ground is level and firm.
3. Escaping hydraulic fluid under pressure can penetrate the skin causing serious injury.
  - Do not use your hand to check for leaks. Use a piece of cardboard or paper to search for leaks.
  - Stop prime mover engine and relieve pressure before connecting or disconnecting lines.
  - Tighten all connections before starting prime mover engine or pressurising lines.
  - If fluid is injected into skin, obtain medical attention immediately or gangrene may result.
4. Ensure hydraulics are disconnected from prime mover before withdrawing from unit.

## SAFETY PRECAUTIONS

5. Do not modify or alter or permit anyone else to modify or alter this unit or any of its components or any unit function without first consulting your Albutt dealer.
6. Do not work under a raised unit unless a suitable hoist or floor jack and multiple jack stands securely supports it.

## OPERATING THE ALBUTT BUCKET BRUSH

1. Do not leave unit in raised position.
2. When working in co-operation with other operators, always let others know what you are doing ahead of time.
3. Never try to mount or dismount unit from a moving unit.
4. Keep hands, feet, and clothing away from moving parts.
5. Disengage flow to unit before transporting or when not in use.
6. When sweeping proceed as follows:
  - a) Sweep only in daylight or in good artificial light.
  - b) Never make a bristle height adjustment while the prime movers engine is running.
  - c) Check the brush motor mounting bolts for proper tightness at frequent intervals.
  - d) Shut off the prime movers engine when removing any debris manual.
7. Watch for holes in the terrain and other hidden hazards.
8. Ensure people and animals are kept away from machine when operating. In particular the area to the front of the unit.
9. Keep all shields or guards in place.
10. The prime mover and sweeper unit should be stopped and inspected for damage after striking a foreign object, and the damage should be repaired before restarting and operating equipment.
11. Do not lubricate or make mechanical adjustments while the unit is in motion or when the prime movers engine is running
12. Periodically maintain the Albutt bucket brush. Tighten nuts, bolts, and fittings periodically for safe operation.

## SAFETY PRECAUTIONS

### AVOID HIGH-PRESSURE FLUIDS

Escaping fluid under pressure can penetrate the skin causing serious injury. Relieve pressure before disconnecting hydraulic lines. Tighten all connections before applying pressure. Keep hands and body away from pinholes, which may eject fluid under high pressure. Use a piece of cardboard to search for leaks.

If ANY fluid is injected into the skin it must be surgically removed within a few hours by a doctor familiar with this type of injury or gangrene may result.



Whenever you see this symbol

it means: **ATTENTION!**

**BECOME ALERT! YOUR SAFETY IS INVOLVED!**



## SAFETY DECALS



**WARNING: SAFE OPERATING PROCEDURES**

LOCATION:



**WARNING: PINCH POINT**

LOCATION:



**ATTENTION: STORAGE**

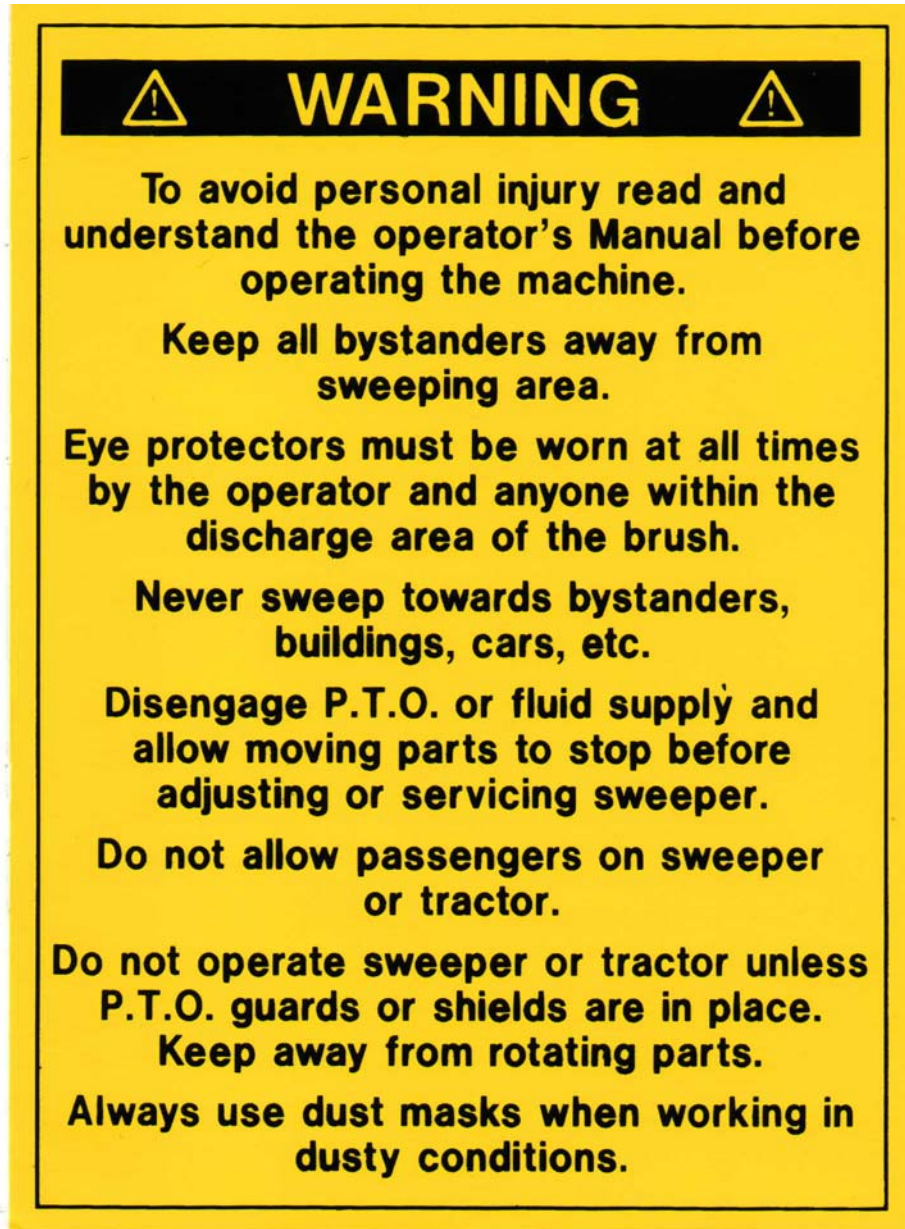
LOCATION:



**ATTENTION: LUBRICATION**

LOCATION:

## SAFETY DECALS



**WARNING: SAFE OPERATING PROCEDURES**

**LOCATION:**

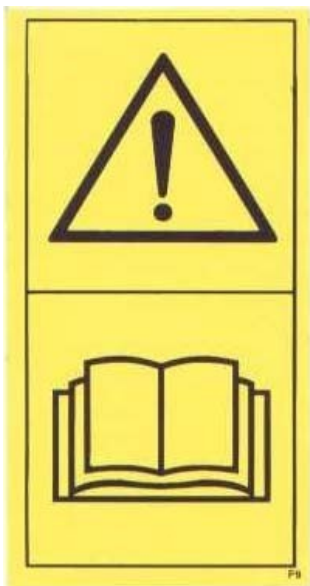
## SAFETY DECALS



**WARNING: Do not ride on machinery**



**WARNING: Keep a safe distance from  
This machine ( foot trap )**



**WARNING: Read operator's manual  
before use.**



**WARNING: Keep a safe distance from  
this machine.( debris )**

## OPERATING MANUAL

**PLEASE READ AND UNDERSTAND FULLY BEFORE OPERATING THIS MACHINE**

### SPECIFICATIONS :-

<b>Sweeping Width :-</b>	SB100 2.31m (7`7") SB80 2,13m (7`0") SB60 1,67m (5`9") SB40 1,75m (5`6")
<b>Overall Dimensions :-</b>	Width 1,2m Length 2.45m SB100,2.6m SB80, 2.3m SB70, 1.9m SB60  Height 610m/m As Bucket
<b>Collection Capacity :-</b>	
<b>Machine Weight :-</b>	215kg SB100,200kg SB80, 185kg SB70, 170kg SB60 Including poly bristles no accessories fitted
<b>Mounting :-</b>	Bracket and lynch pin
<b>Brush Options :-</b>	Polypropylene
<b>Brush Drive :-</b>	Hydraulic Motor

### Hydraulic Supply Required :-

Min. flow required	30 LPM
Max. flow	61 LPM
Max. Pressure	3000 PSI 207 BAR

### Recommended Operating Speed :-

Max. 4 MPH

**NB :- Varying engine speed can regulate oil supply to the machine.**

**NOTE :- DO NOT OPERATE AT MAXIMUM PRESSURE AND MAXIMUM FLOW SIMULTANEOUSLY.**

## An Introduction to the Albutt Bucket Brush

The Albutt Bucket Brush is an attachment to your own bucket or supplied complete with bucket and driven by the prime mover auxiliary hydraulic system.

The brush unit is attached to the bucket by a quick release bracket and lynch pin (supplied) (Fig 1) welded to the top edge of the bucket. (See Fig 2) These brackets allow the Albutt Bucket Brush to be quickly fitted and removed from the bucket and also to allow the unit to swing away from the bucket when emptying.

The Albutt Bucket Brush unit consists of one main fabrication and two arms bolted to the main frame, allowing them to be adjusted to suit the length of the opening of the bucket, from the cutting edge to the top. The unit is adjustable between 850 m/m and 1400 m/m

## QUICK RELEASE BRACKET

To operate the quick release bracket remove the lynch pin ( Ref 2 ) flip back the latch ( Ref 1 ) and remove unit from the bucket, always replace the lynch pin ( Ref 2 ) to prevent damage.

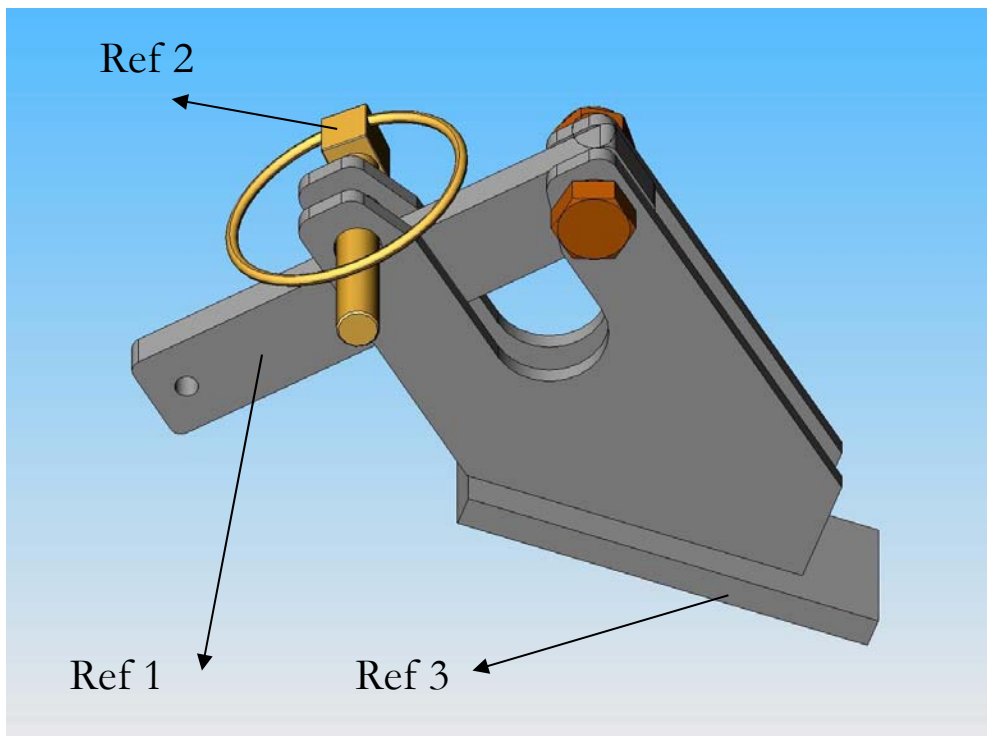


Fig 1

## BRACKET FITTING INSTRUCTIONS

When fitting brackets to the bucket ensure the distance of the outside of the brackets are for the SB60 1815m/m ( Ref 4 ) and the SB80 2045m/m ( Ref 5 ), the brackets are to be placed at equal distance from each side ( Ref 6 ) and set at 15m/m to 20m/m from front angle to the bottom of the seating radius of the bracket ( Ref 7 ). If the opening between the cutting edge and the top is less than 850 m/m ( Ref 8 ) contact Albutt Co. Ltd. If over 1300 m/m (Ref 10 ) the brackets can be welded onto the inside top face ( Ref 9 ) but must be inverted. Before fully welding, it is recommended that a test swing is undertaken after completing **fitting and adjusting brush unit** ( page 5 ).

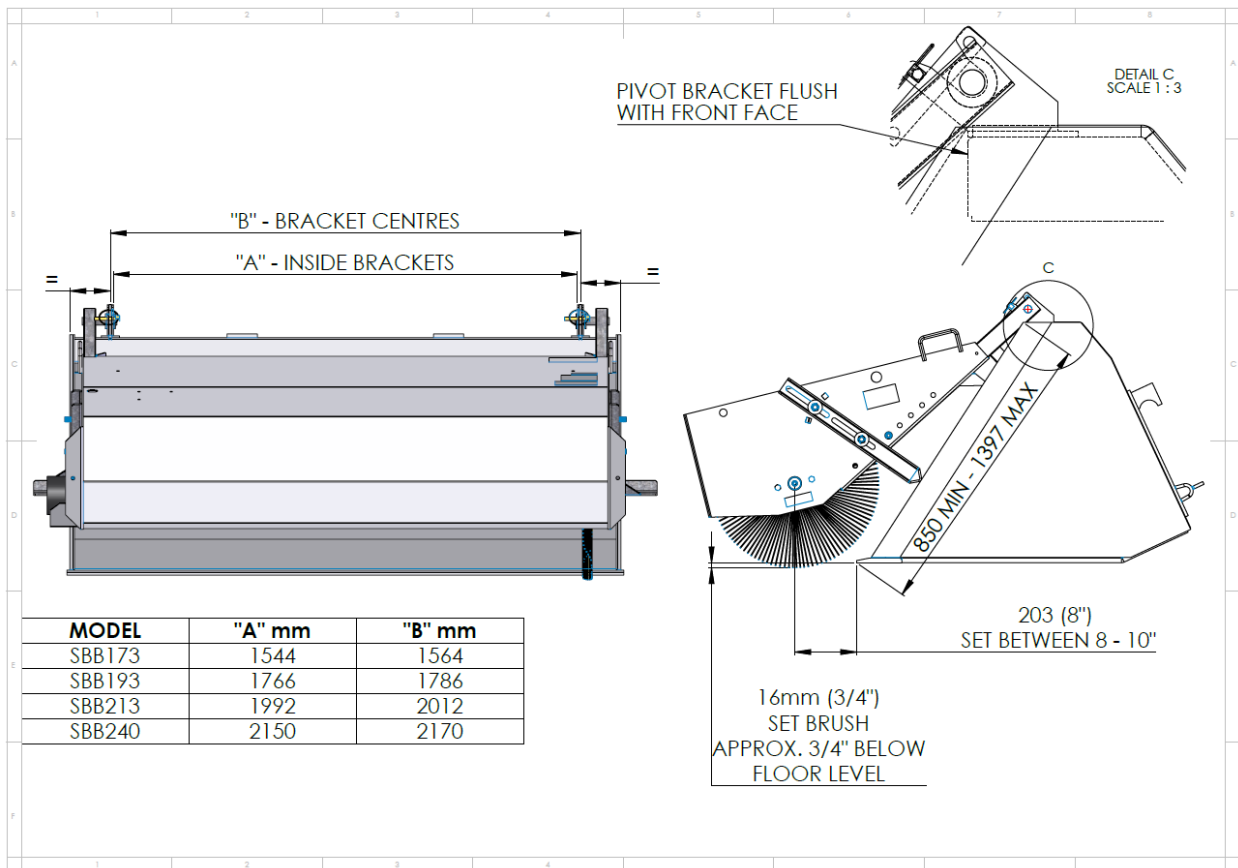


Fig 2

## FITTING AND ADJUSTING BRUSH UNIT

- Locate brush unit onto quick release brackets as per ( page 3.)
- Set bucket at around 40 to 50 m/m from the ground ensuring the bucket is level ( Ref 11 ) ( Fig 4 ).
- Remove both M12 bolts from the bottom of the arms ( Ref 12 ), pull out brush unit to obtain 200 – 250m/m ( 8”-10” ) ( Ref 13 ) from the centre of the brush to the cutting edge of the bucket as shown in Fig 3, with the brush on the ground.
- Locate M12 bolts into the nearest holes between side plates and arms and tighten ( Ref 12 ).
- Release the 2 off M16 bolts on both jacks ( Ref 14 ), slide jacks down onto the front edge of the bucket ( Ref 15 ), at this point check that the jacks are at around 90 deg to the bucket front edge ( Ref 16 ), if not remove the top M16 bolt from both jacks ( Ref 17 ) and swing the jack to locate the closest place to 90 deg, relocate M16 bolts ( Ref 14 ) and tighten ensuring both jacks are in contact with bucket front edge ( Ref 15 ).
- **Safety Note :-** Do not raise unit more than 100m/m ( 4” ) above the ground during test swing.  
Check lynch pins are locked in place.  
Ensure tack welds are strong enough to support brush unit.  
Lift and rotate bucket **VERY** slowly.  
Correct **ANY** misalignments.
- Connect hydraulic pipes to auxiliary hydraulic supply.



SECTION  
5

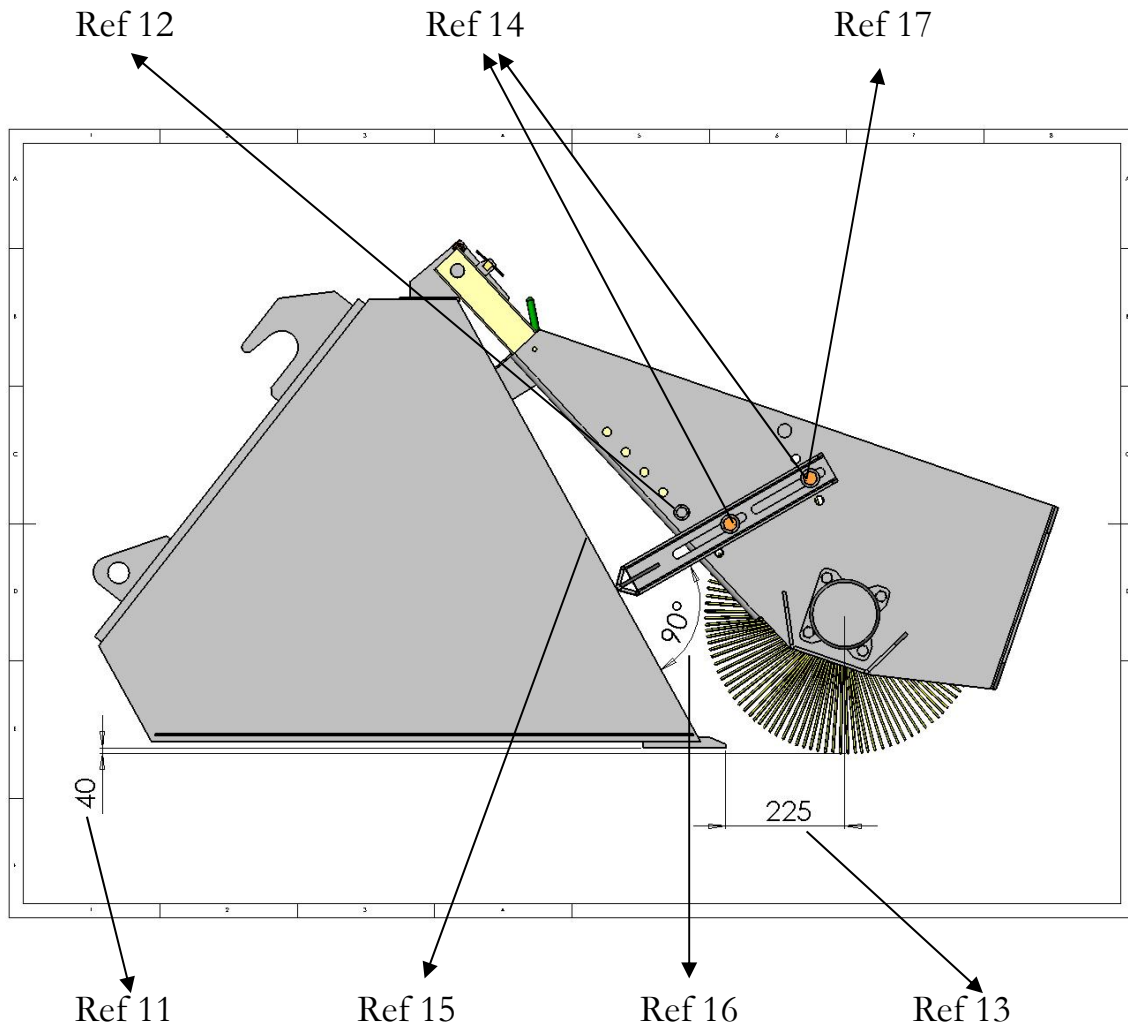


Fig 4

## OPERATING INSTRUCTIONS :-

### BRUSH ROTATION:-

Check rotation of brush by operating the auxiliary valve, brush must rotate from the ground into the bucket, ( Viewed from the motor side the brush must rotate clockwise ).

### BRUSH ADJUSTMENT :-

Adjust slide jack height so that the brush is resting on the ground producing a 75m/m ( 3" ) sweep pattern ( as item 5 page 5 ) with the bucket approximately 40 m/m ( 1 1/2" ) off the ground and level ( see fig 4 )

### OPERATING SPEED :-

The rotating speed of the brush needs to be kept to a minimum and on most prime movers the engine speed can be kept at just over tick over or slightly above ( max. 1200 engine RPM ). Excessive brush speed creates more brush wear and more dust. Forward speed depends on conditions and the quantities of spoil being swept, but generally up to a maximum of 4 MPH.

### SAFETY NOTE :-

**Ensure** people are kept away from the machine when operating.

**USE LIFTING GEAR** ( Forklift or Hoist ) when initially fitting and adjusting unit,

When unit is removed, **stand upright** to keep bristles off the ground.

Ensure unit is standing on **hard level** ground and **will not fall over.**

### LUBRICATION :-

Grease all bearings periodically depending on usage.

grease screw jacks via greasing point at top and side when fitted.

## **BRUSH CORE REMOVAL**

The brush core must be removed from the body to facilitate bristle replacement.

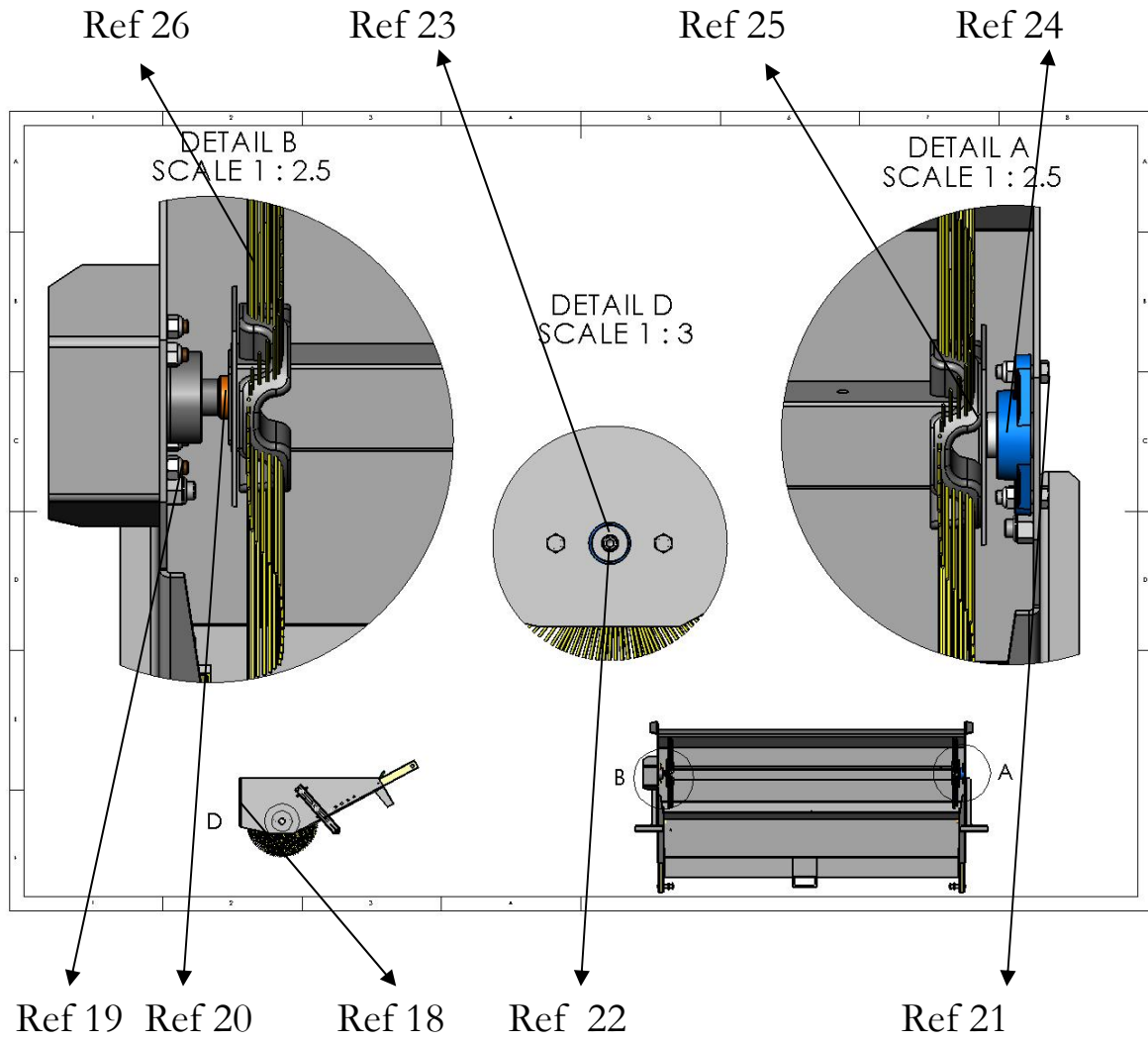
Follow steps below ( Fig 5 ) :-

- Stand brush unit upright ( use feet ) ( Ref 18 )
- Remove 4 off M12 x 60 bolts from hydraulic motor ( Ref 19 ).
- Remove motor from splined insert ( Ref 20 ).
- Remove 2 off M12 x 40 bolts from flanged bearing ( Ref 21 ).
- Remove complete brush core assembly from main body.
- Remove M10 cap screw ( Ref 22 ) in the end of the idler shaft retaining the flange bearing, remove cap ( Ref 23 ) flange bearing ( Ref 24 ) and retaining plate ( Ref 25 ) from idler shaft.
- Remove all bristles ( Ref 26 ) from square core.
- Disposal of bristles must be within ISO 14001 Compliance.

## **BRUSH CORE ASSEMBLY AND INSTALLATION**

Reverse procedure of BRUSH CORE REMOVAL.

Fig 5



ITEM PARTS FOR SPARE PARTS LIST

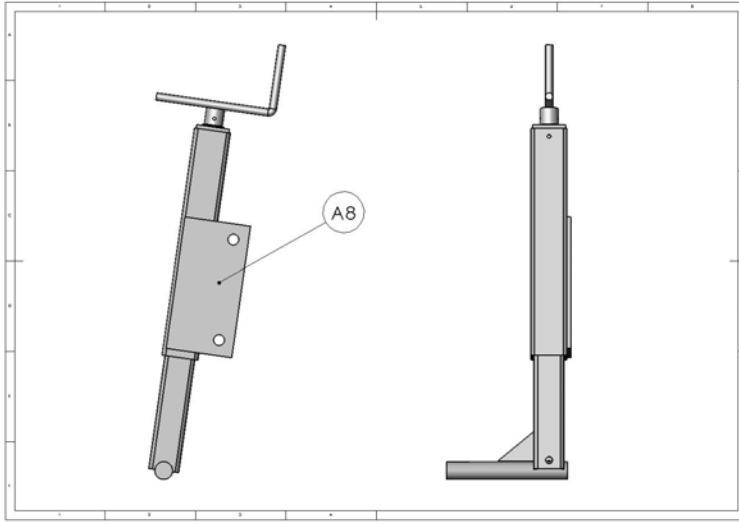


Fig 7

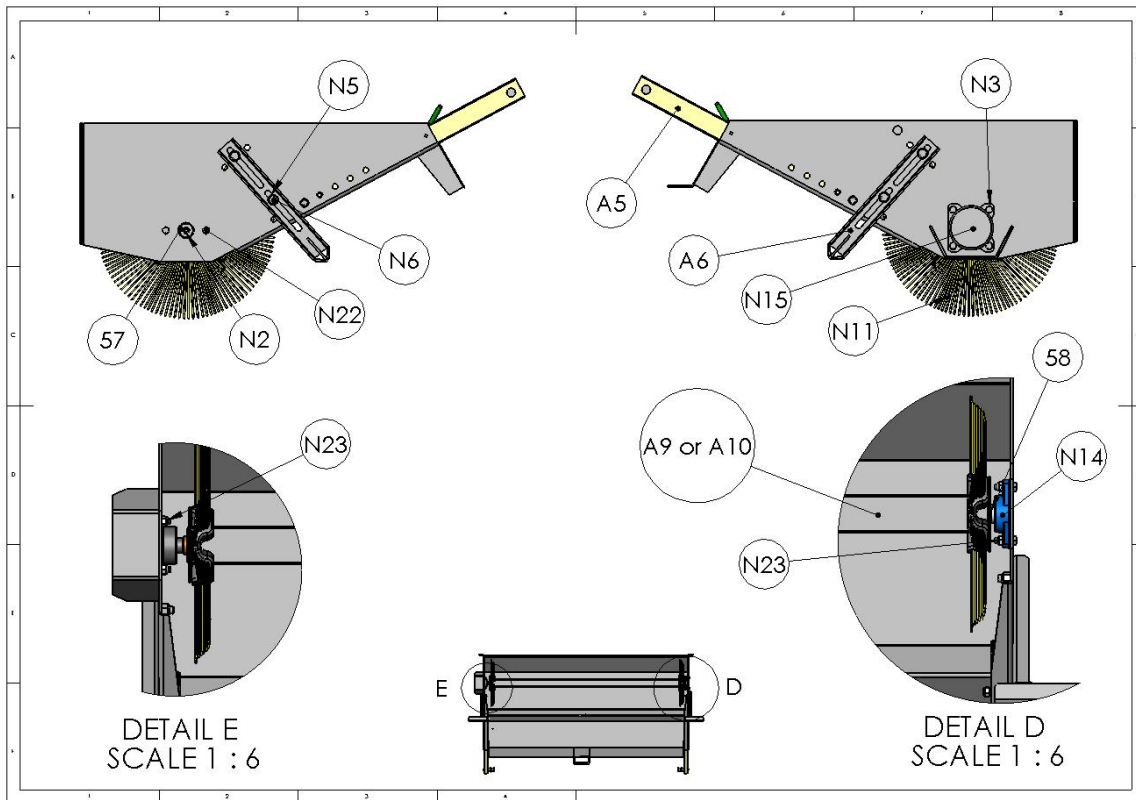


Fig 6

<b>SB SPARE PARTS LIST</b>			<b>SECTION 8</b>
<b>ITEM No</b>	<b>PART No</b>	<b>DESCRIPTION</b>	<b>QTY</b>
N1	3082433716	M24 HARVEST WASHER	4
N20	307216056	M16 NYLOC NUT	4
N23	307212056	M12 NYLOC NUT	10
N22	301212406	M12 X 40 BOLT	2
N25	308250016	M12 WASHER	6
N2	306210356	M10 X 35 CAP SCREW	1
N3	306212706	M12 X 70 CAP SCREW	4
N5	308160026	M16 WASHER	4
N6	301416406	M16 X 40 COACH BOLT	4
N7	301212706	M12 X 70 BOLT	2
N60	H-F-1/2-MM	½ MALE TO MALE ADAPTOR	2
N61	400-025	DOWTY SEAL	2
N62	KIT-17	PIPE KIT	1
N15	S0524-160-420	HYDRAULIC MOTOR (POST JAN 2008)	1
58	SBB-510	REMOVABLE END PLATE	1
N14	UCFL206-30	30 m/m FLANGE BEARING	1
N11	SB01P82SQ	560 DIA BRUSH SB100/SB80/SB70/SB60	51/48/41/37
57	SBB-509	LOCKING CAP	1
A5	SBB-1002-G	ARM ASSEMBLY	2
A6	SBB-1012-G	SLIDE JACK ASSEMBLY	2
A7	SBB-1013	PIVOT BRACKET ASSEMBLY	2
A9	SBB-1504	SB80 BRUSH CORE ASSEMBLY	1
A10	SBB-1506	SB70 BRUSH CORE ASSEMBLY	1
A11	SBB-1508	SB60 BRUSH CORE ASSEMBLY	1
A8	SBB-1019	SCREW JACK ASSEMBLY IF FITTED	1 R/H 1 L/H
N40	S39	LYNCH PIN	2
N83	CHAIN-PC	CHAIN SMALL LINK x 170mm lg	2
N84	BLKW16GZ	M16 LARGE WASHER	4
N85	08-HARV	½" LARGE WASHER	2
	SBB-1005-G	BODY ASSEMBLY SB80	1
	SBB-1005-1-G	BODY ASSEMBLY SB70	1
	SBB-1005-2-G	BODY ASSEMBLY SB60	1
		<b><u>PARTS FOR WATER SYSTEM IF FITTED</u></b>	
46	SBB-1026	WATER TANK BRACKET ASSEMBLY	2
70	SBB-1029	WATER TANK ASSEMBLY	1
71	SBB-1027	DRIP BAR ASSEMBLY	1
N72	BV2-090-12	BALL VALVE	1
N73	01-157-102	HOSE CONNECTOR	2
N74	01-117-102	1/2" BSP 90 ELBOW	1
N75		1/2" BSP STRAIGHT CONNECTOR	2
N76	S0-300	TANK STRAP	1
N78	301410256	M10 X 25 BOLT	2
N79	307210056	M10 NYLOC	2
N80	HC2	JUBILEE CLIP	2
N81	08-H02	08 HOSE	1,5 MTRS

