

# **INSTRUCTION MANUAL AND PARTS CATALOGUE FOR**

## **ALBUTT BALE HANDLERS (TINED VERSIONS)**

**THIS MUST BE USED IN CONJUNCTION WITH THE  
ALBUTT GENERAL OPERATOR'S MANUAL**

# CONTENTS

Certificate.....	3
Safety Instructions.....	4-6
Machine Capabilities.....	7
Operating Instructions.....	8-9
Hydraulic Safety.....	10
Parts Diagrams.....	11-16



**EU CERTIFICATE OF CONFORMITY**

CONFORMING TO EC Machinery Directive 2006/42 EC

**We:**

Albutt Limited  
Great Washbourne  
Tewkesbury  
Glos. UK  
GL20 7AR



declare in sole responsibility, that the products

**Type: F100, F110, F125, F131, F131FT, F140A, F150A, F155A, F160A, F301, F501, F650HX, ES100, CS100**

to which this certificate applies, conforms to the basic safety  
and health requirements of the EC Machinery Directive 2006/42 EC,  
and the Transposed Harmonised Standards:

BS EN 1553 (2000)

A handwritten signature in black ink, appearing to read "A. D. Albutt".

Alistair Albutt

**Managing Director**



# SAFETY INSTRUCTIONS

## IMPORTANT – READ BEFORE USE

This manual is provided to assist you in getting the best results from your machine and ensure that you do so safely. If you have any queries about the use of the machine contact your dealer before use. Please keep this manual for future reference.

### INTENDED USE

The intended use of Albutt bale spikes and grabs (F range) is for the safe lifting of compacted bales of straw, hay, haylage and silage both wrapped or unwrapped using user preference to prevent damage to wrap. These products must only be used for this purpose and under no circumstances should be used as a lifting device or access platform.

### 1.1 FUNDAMENTAL PRECAUTIONS

On delivery, your dealer gave you an explanation of the operation and maintenance of this Albutt attachment. Please read and understand these operating instructions before operating the attachment for the first time. It is essential that you observe all safety instructions.

Incorrect use or mishandling of the machine can endanger:

Life and Limb of the operator, other persons or animals within the vicinity of the machine.

The machine and other material assets of the owner or third persons.

The performance of the machine.

Anyone who is involved in the commissioning, operation or maintenance of the bale handler must read and understand these instructions very carefully and observe them at all times.

**NEVER DISTRACT ANYONE WHO IS USING A MACHINE.**

### 1.2 AUTHORISED OPERATORS

Youths under the age of 16 must not operate this attachment. The owner of the bale handler must provide the operator with the operating instructions and make sure they have read and understood them. Only then may the bale handler be put into operation.

The owner must ensure that only authorised persons operate/work on this bale handler. The owner is responsible for keeping any third persons or animals out of the working area of the machine.

**THE OPERATOR MUST BE FULLY TRAINED BEFORE USING THE IMPLEMENT ESPECIALLY WHEN MOUNTED ON A TRACTOR LOADER OR TELEHANDLER. A SAFE DISTANCE OF AT LEAST 10M MUST BE OBSERVED BY ANYONE WITHIN THE VICINITY OF THE BALE HANDLER.**

### **1.3 GENERAL SAFETY AND ACCIDENT PREVENTION REGULATIONS**

Ensure the implement is correctly and securely attached to the operating vehicle using loader bracket mounting points. These do not come supplied with the attachment.

Always use the correct mounting bracket and ensure that it is fitted by a trained and competent operator who has been approved by your Albutt dealer. It is recommended to use a bolted connection to attach the mounting bracket.

**NEVER** attach to a tractor which would be rendered unstable when the implement is operated at its full capacity. Take note of the maximum load permissible on loader or linkage arms.

Take extra care when operating machinery on sloping ground. **NEVER** operate on ground where there is a risk of the tractor becoming unstable.

When the unit is stationary always ensure it is lowered to the ground.

When detaching the implement from the tractor always ensure that it is stable and safely positioned on a level surface.

The attaching and detaching of the implement must be carried out by only one operator. There should not be any other people in the vicinity of the implement or in the tractor.

Before operation make yourself familiar with all elements and controls of the machine as well as their functions.

We recommend that the attachment is placed on a trailer when travelling on the public highway.

Before operation inspect the area around you. Keep children away. All visitors and unauthorised persons should be kept well away from work area at all times.

**Under NO circumstances** should anyone, authorised or otherwise attempt to use the bale stacker as a means of personal transport. It is designed as a specialist purpose farm implement and is unsuitable for the safe transportation of passengers. **NEVER** allow anyone especially children to travel anywhere between the tractor and an implement.

**NEVER** use this implement to lift items other than bales of straw, hay or silage. Any attempt to overload the machine will risk life and limb of the operator and immediately invalidate warranty.

To avoid personal injury keep hands and limbs well away from the moving parts.

**ENSURE** the implement and bales, do not restrict the forward vision or important sightlines of the operator when mounted on the front of the tractor.

**ENSURE** that the operator is aware of the large overhang when the implement is mounted on the front of the tractor. **EXTREME CAUTION** must be taken when emerging onto the public roads.

Never unload bales on sloping ground or anywhere where the bales could be unstable. If stacking bales always ensure that the ground is level and stable and the stack is secure and adequately supported.

**NEVER** attempt to move the implement manually.

**We recommend that genuine Albutt bolt on brackets are used on these attachments.**

**Any weld on brackets which adversely affect the structure of the product may invalidate warranty.**



## 1.4 MACHINE CAPABILITIES

The Albutt bale handlers are capable of handling (bale sizes in cm - widthxdepth):

HANDLER	QTY ROUND	QTY 80x90	QTY 120x90	QTY 120x70	QTY 80x70	QTY 80x50	QTY 120x120	MAX CAPACITY (kg)
F100	1	N/A	N/A	N/A	N/A	N/A	N/A	1000
F110	2	N/A	N/A	N/A	N/A	N/A	N/A	2000
F125	2	3	3	4	4	6	2	2500
F131	N/A	3	3	N/A	N/A	N/A	2	2250
F131FT	N/A	3	3	N/A	N/A	N/A	2	2250
F140A	N/A	2	N/A	N/A	2	2	N/A	1500
F150A	N/A	3	2	2	3	3	2	2250
F155A	N/A	N/A	3	3	N/A	N/A	3	2500
F160A	N/A	2	N/A	N/A	2	2	N/A	2000
F301	2	1	1	N/A	1	1	N/A	1000
F501	2	3	3	N/A	N/A	N/A	2	2000
F650HX	3	4	4	5	5	N/A	3	2500
ES100	1	1/2	N/A	N/A	1/2	1/2	N/A	1000
CS100	1	1/2	N/A	N/A	1/2	1/2	N/A	1000

It is very important to use the longest tines possible when handling bales. Use 820mm long tines for 800mm wide bales and 1100mm long tines for 1200mm wide bales.



## 1.4 GENERAL OPERATING INSTRUCTIONS

### For F100/F110/F125/F131/F131FT/CS100/ES100

- 1) Drive up to the bale
- 2) Position bottom bale spikes horizontal and approx. 150mm from the base of the bottom bale.
- 3) Drive in until the bale is up against the frame.
- 4) Lift the bales and crowd back so the bales are supported by the back frame. **DO NOT LIFT ANY BALES WHICH ARE UNSUPPORTED BY THE BACK FRAME.**
- 5) **Before moving ensure the desired path is clear. Only ever travel in a path which is known to be clear and never allow the bales and handler to come within 10m of a bystander.**
- 6) To place the load, position the bales very close to the destination before returning the bales to horizontal to prevent bales tipping off prematurely. Gently place down the bales and when the load is taken by the floor/trailer/other bales, reverse out gently. If the bales begin to move adjust spike position as necessary to prevent dragging.





## 1.4 GENERAL OPERATING INSTRUCTIONS

### For F301

- 1) Drive up to the bale. Spread the arms as wide as possible. Do not alter the width once the bale has been penetrated.
- 2) Position bottom bale spikes horizontal and approx. 150mm from the base of the bottom bale.
- 3) Drive in until the bale is up against the frame.
- 4) Lift the bale and crowd back so the bale is supported by the back frame. **DO NOT LIFT ANY BALE WHICH ARE UNSUPPORTED BY THE BACK FRAME.**
- 5) **Before moving ensure the desired path is clear. Only ever travel in a path which is known to be clear and never allow the bale and handler to come within 10m of a bystander.**
- 6) To place the load, position the bale very close to the destination before returning the bales to horizontal to prevent bale tipping off prematurely. Gently place down the bale and when the load is taken by the floor/trailer/other bales, reverse out gently. If the bale begin to move adjust spike position as necessary to prevent dragging.



## 1.4 GENERAL OPERATING INSTRUCTIONS

### For F501/F650HX:

- 1) Ensure the machines' locking pins are fully extended and the attachment is completely locked onto the machine. Some machines will allow you to lock this hydraulic function – if possible do this once the locking pins of the attachment are fully locked into place. This will ensure that the attachment stays locked on if the locking pin switch is accidentally moved.
- 2) REMOVE TRANSPORT BAR FROM WINGS & TRANSPORT BOLT FROM BOTTOM TINE HOLDER (F650HX)
- 3) Drive up to the bales. Retract the wings fully.
- 4) Push the base tines into the base bale until the tine box touches the bale.
- 5) Close the wings until the wing tine box sections are touching the bales. **DO NOT LIFT ANY BALES WHICH ARE UNSUPPORTED THE BASE TINES OR WING TINES.**
- 6) Lift the bales and crowd back so the bales are supported by the back frame. **Before moving ensure the desired path is clear. Only ever travel in a path which is known to be clear and never allow the bales and handler to come within 10m a bystander.**
- 7) To place the load, position the bales very close to the destination before returning the bales to horizontal to prevent bales dropping off prematurely. Gently place down the bales and when the load is taken by the floor/trailer/other bales, retract the wings and gently reverse to retract the tines. If the bales begin to move alter the base tine position gently to release them. Do not drop the bales from any height, this may result in personal injury or damage to the bales





## 1.4 GENERAL OPERATING INSTRUCTIONS

### For F140A/F150A/F155A/F160A

- 1) Drive up to the bales. Retract the tines fully.
- 2) Position the handler on top of the bales so it is flat across the top of the bales and right up to the back frame and guide bar.
- 3) Push the hooks fully into the bales. Some down pressure may be required to stop the handler from lifting.
- 4) Lift the bales and crowd back so the bales are supported by the back frame. **Before moving ensure the desired path is clear. Only ever travel in a path which is known to be clear and never allow the bales and handler to come within 10m of a bystander.**
- 5) To place the load, position the bales very close to the destination before returning the bales to horizontal to prevent bales dropping off prematurely. Gently place down the bales and when the load is taken by the floor/trailer/other bales, pull out the hooks and lift the handler away. Do not drop the bales from any height, this may result in personal injury or damage to the bales



## 1.5 HYDRAULIC SAFETY

**CAUTION** The hydraulic system is under high pressure.

Ensure that only high-pressure hoses are used to connect supply to the attachments hydraulic cylinder. Check hoses regularly and renew any that are damaged or worn. **Hydraulic** supply must not exceed 207 bar & 80 L/min

Before working on the hydraulics lower the bale handler, release the pressure from the system and stop the tractor engine.

When connecting hydraulic rams make sure that the hydraulic hoses are coupled correctly. Pressure should be released from the system both on the tractor and on the implement side prior to coupling the hoses to the tractor hydraulics.

**CAUTION** Hydraulic oil forced out under pressure can break the skin and cause severe injury. In the event of a hydraulic oil leak stop the tractor flow immediately. **DO NOT PUT HANDS NEAR A LEAKING PIPE.**

## 1.6 MAINTENANCE

As a rule, disengage the driving system and stop the engine prior to carrying out maintenance, servicing, cleaning or repair work. **ALWAYS** remove the ignition key.

Prop the machine with appropriate supports before carrying out any maintenance work. The manufacturer will not be responsible for any damages or injuries caused by unauthorised repair, alterations or mishandling of the product.

Maintain product with care. Check periodically for damage that would affect the safe operation of the implement.

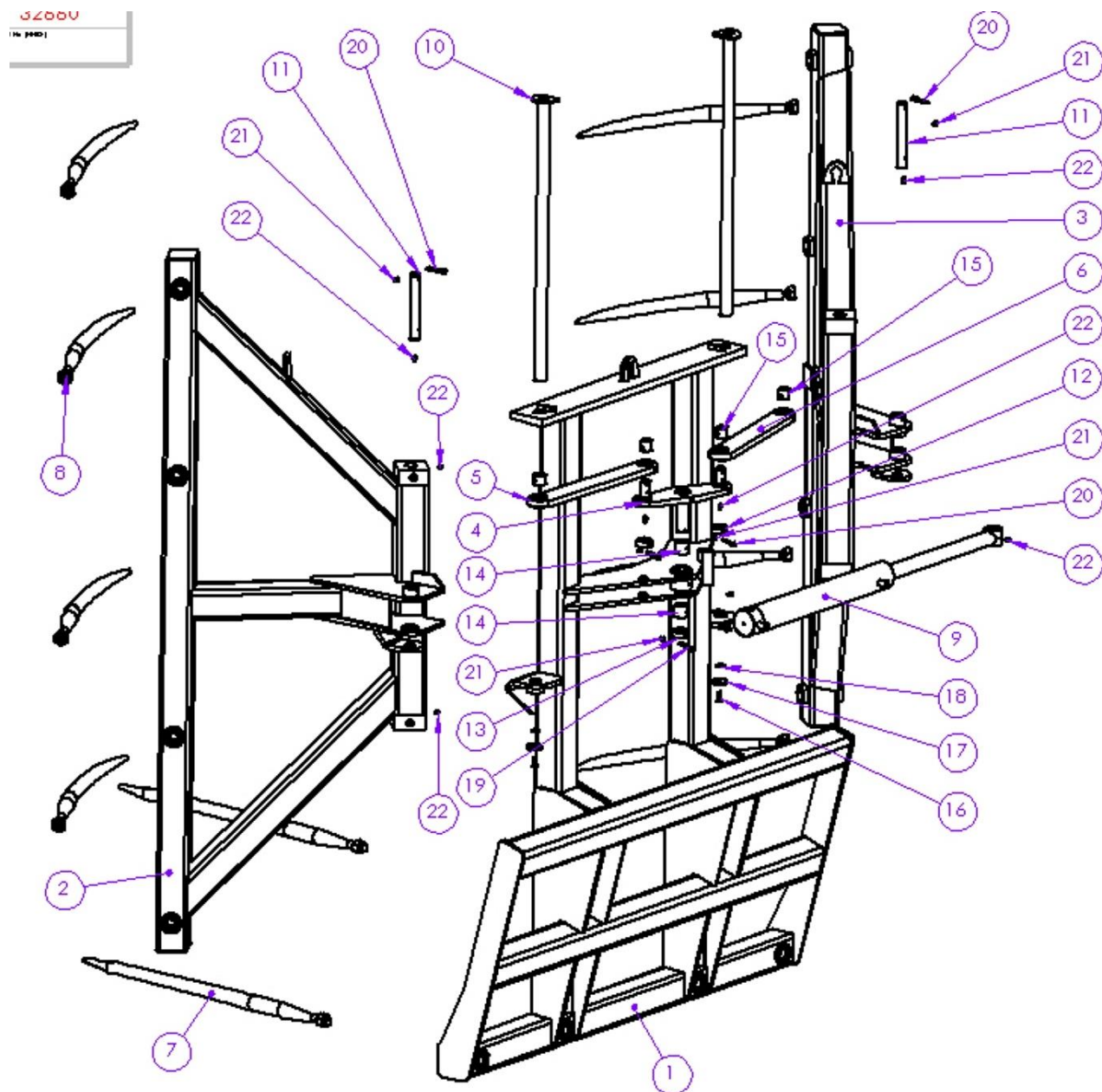
**ALWAYS** ensure all warning stickers are kept clean and in good condition.

Regularly check the bolts at the hinge points and tighten if necessary.

Regularly lubricate the hydraulic cylinder and hinges using clean grease.

Cover the chromed area of the hydraulic cylinder with a layer of grease during prolonged periods of inactivity.

## 2.0 F501 PARTS DRAWING (2012)



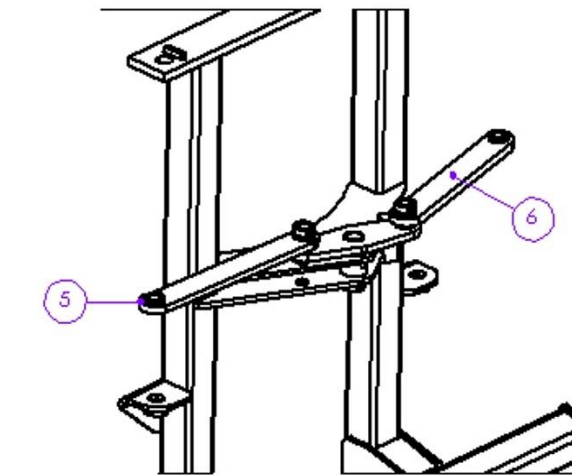


## 2.0 F501 PARTS DRAWING (2012)

ITEM NO	PART NUMBER	DESCRIPTION	QTY	
1	F501-BF	F501 MAIN FRAME	1	1
2	F501-LH	F501 LH BALE ARM	1	
3	F501-RH	F501 RH BALE ARM	1	
4	01-0419-PVT3	F501 PARALLEL LINK PIVOT	1	
5	01-0419-PLL3	F501 PARALLEL LINK - LONG	1	2
6	01-0419-PLS3	F501 PARALLEL LINK - SHORT	1	
7	C1-810-ST	810mm Lg CONUS 1 TINE	2	
8	C1-600-CU	CONUS 1 600mm CURVED TINE	8	
9	C741-C	HYDRAULIC RAM	1	
10	01-30-750W	750 Lg PIVOT PIN	2	
11	01-25.4-175G	175 Lg GREASEABLE RAM PIN	2	
12	01B-4025-014X	Dia 25 PIN RETENTION COLLAR	2	
13	01B-4530-014X	Dia 30 PIN RETENTION COLLAR	1	
14	Dx30-34-30	30mm Dx BUSH x30 Lg	2	
15	Dx25.4-28.6-25.4	1" Dx BUSH x1" Lg	4	
16	FS M825 CSK		2	
17	FS M8 CSW	M8 CSK WASHER	2	
18	FS M8 NDLW	M8 NORD-LOCK WASHER (LARGE)	2	
19	FS M660 BL		1	
20	FS M650 BL		4	
21	FS M6 LN	M6 NYLOK NUT	5	
22	GN M6ST	M6 GREASE NIPPLE STRAIGHT	11	

### DETAIL OF LINKAGE ARRANGEMENT

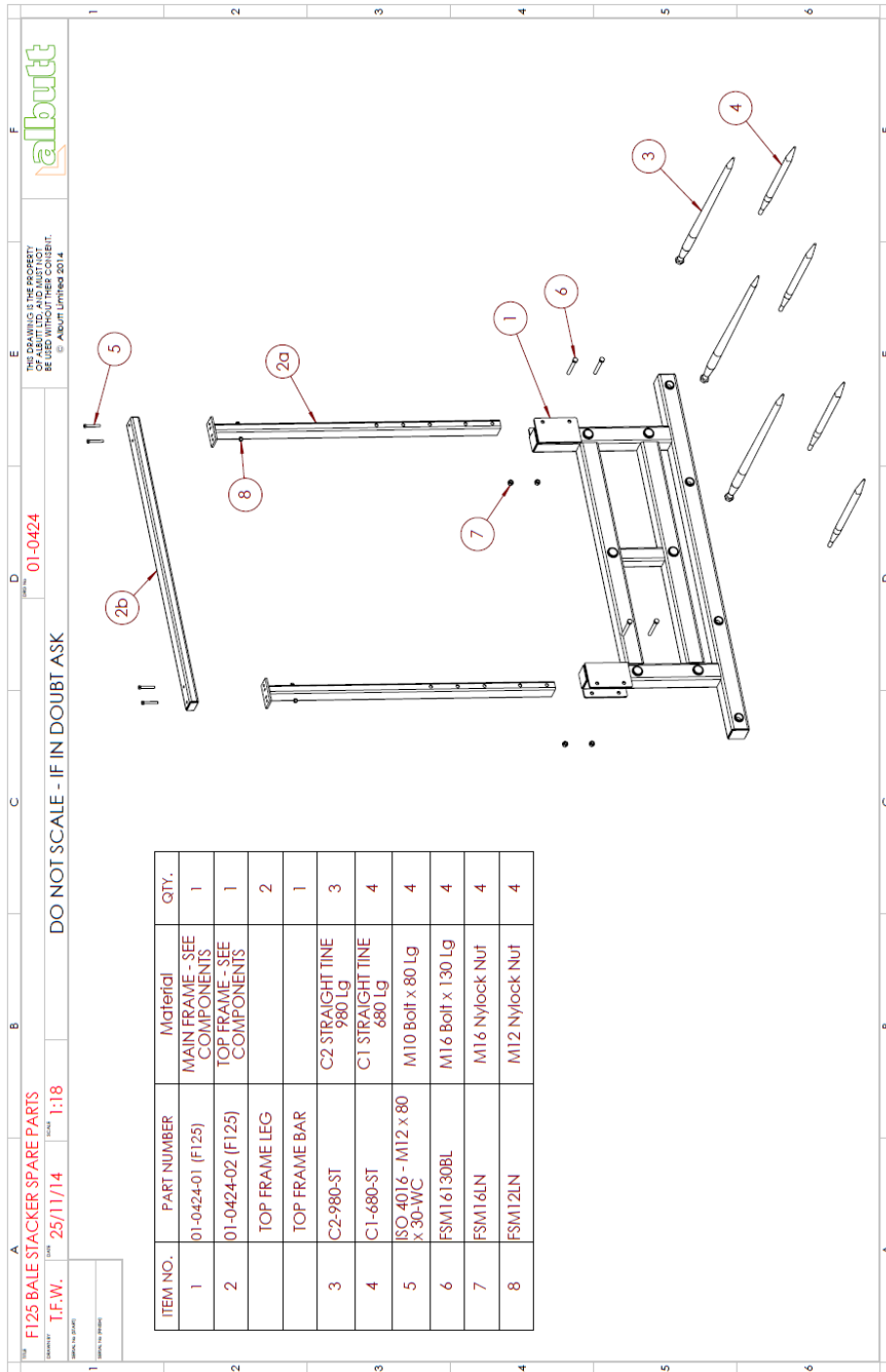
IMPORTANT - ITEMS 5 & 6 TO BE POSITIONED AS SHOWN FOR GRAB TO WORK CORRECTLY







## 2.2 F125 PARTS DRAWING (2018)





## 2.4 F150A PARTS DRAWING

